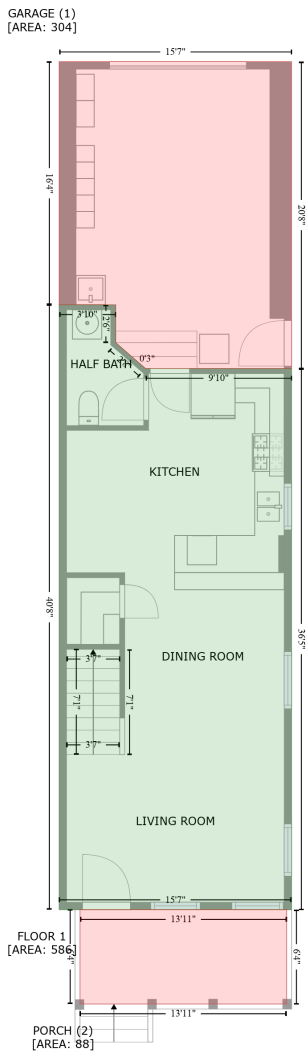


435 Cottage Lane, Wood Street, Dunedin, Pinellas County, Florida, United States, 34698

Gross Living Area: 1476 sq. ft



Space	Area (sq. ft)	Calculation <small>Coordinate Polygon Area Algorithm using inches</small>
FLOOR 1 (Living area)	586	$-((148.4 + 148.4) * (194.6 - 225.1) + (148.4 + 172.5) * (225.1 - 246) + (172.5 + 290.3) * (246 - 246) + (290.3 + 290.3) * (246 - 682.6) + (290.3 + 102.9) * (682.6 - 682.6) + (102.9 + 102.9) * (682.6 - 194.6) + (102.9 + 148.4) * (194.6 - 194.6)) * 0.5 * 0.00694$
GARAGE (Non-living area)	304	$-((290.3 + 290.3) * (-1.5 - 246) + (290.3 + 175) * (246 - 246) + (175 + 172.5) * (246 - 245.9) + (172.5 + 148.4) * (245.9 - 225.1) + (148.4 + 148.4) * (225.1 - 194.6) + (148.4 + 102.9) * (194.6 - 194.6) + (102.9 + 102.9) * (194.6 - -1.5) + (102.9 + 290.3) * (-1.5 - -1.5)) * 0.5 * 0.00694$

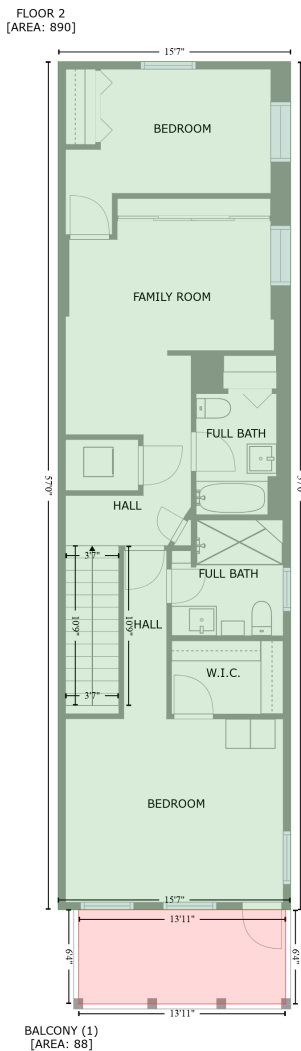
435 Cottage Lane, Wood Street, Dunedin, Pinellas County, Florida, United States, 34698

Gross Living Area: 1476 sq. ft

Space	Area (sq. ft)	Calculation <small>Coordinate Polygon Area Algorithm using inches</small>
PORCH (Non-living area)	88	$-((286.3 + 286.3) * (682.6 - 758.7) + (286.3 + 119.7) * (758.7 - 758.7) + (119.7 + 119.7) * (758.7 - 682.6) + (119.7 + 286.3) * (682.6 - 682.6)) * 0.5 * 0.00694$

435 Cottage Lane, Wood Street, Dunedin, Pinellas County, Florida, United States, 34698

Gross Living Area: 1476 sq. ft



Space	Area (sq. ft)	Calculation <small>Coordinate Polygon Area Algorithm using inches</small>
FLOOR 2 (Living area)	890	$-((290.3 + 290.3) * (-1.5 - 682.6) + (290.3 + 102.9) * (682.6 - 682.6) + (102.9 + 102.9) * (682.6 - -1.5) + (102.9 + 290.3) * (-1.5 - -1.5)) * 0.5 * 0.00694$
BALCONY (Non-living area)	88	$-((286.2 + 286.2) * (682.6 - 758.6) + (286.2 + 119.4) * (758.6 - 758.6) + (119.4 + 119.4) * (758.6 - 682.6) + (119.4 + 286.2) * (682.6 - 682.6)) * 0.5 * 0.00694$