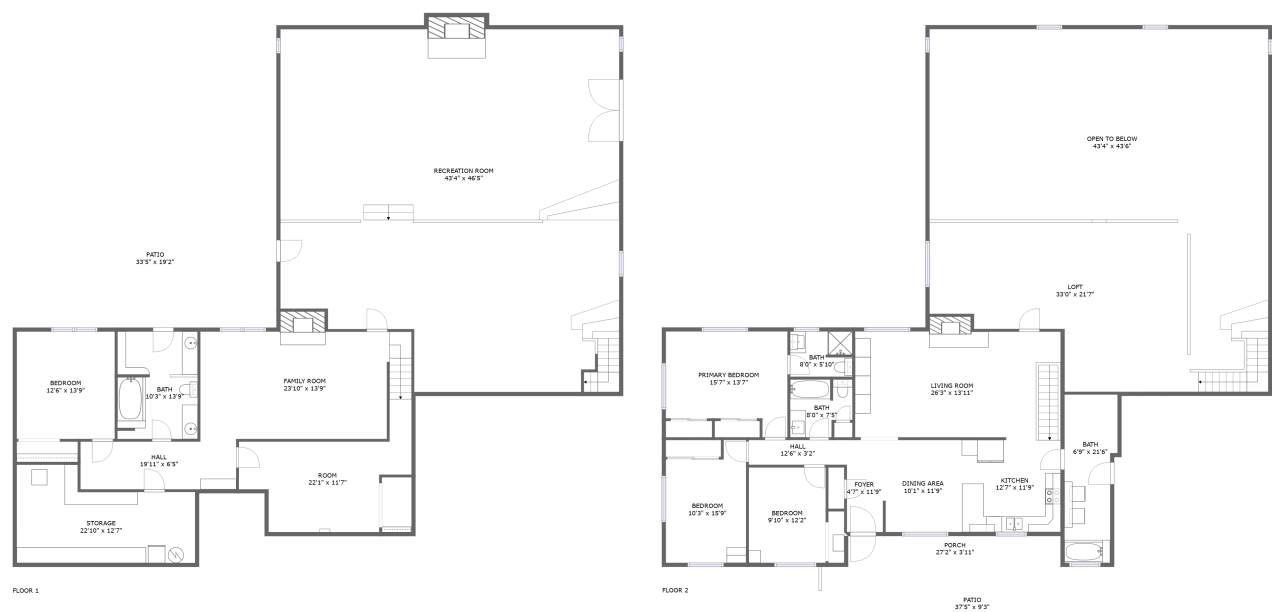




Home report


1916 W County Rd 6,Berthoud,CO,US





Property summary


**0** Garages


**4** Bedrooms

**3** Bathrooms

**1** Half baths

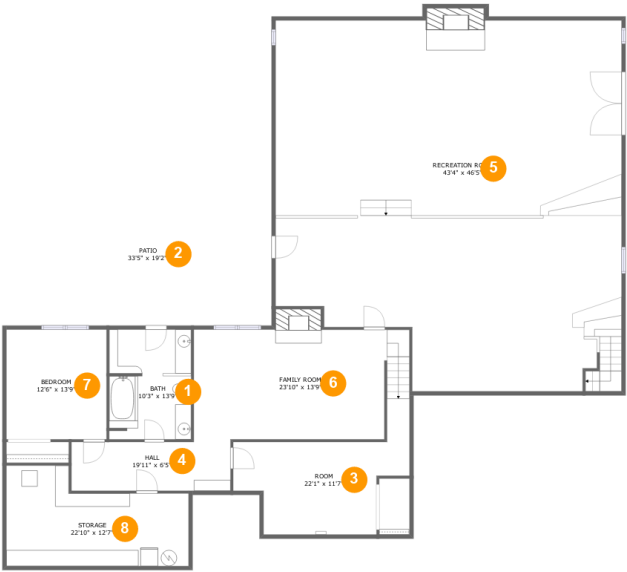
**2** Floors

**5,127** Gross living area sqft

**7,962** Total sqft

Home report

1916 W County Rd 6,Berthoud,CO,US



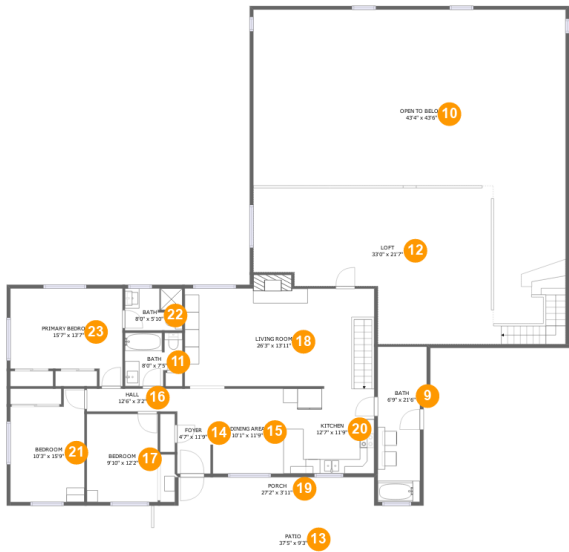
Room dimensions

Floor 1 Total sqft: 3965    Living area: 2834

#		Dimensions	sqft	Counted as living area
1	Bath	10'3" x 13'9"	139 sq. ft	Yes
2	Patio	33'5" x 19'2"	588 sq. ft	No
3	Room	22'1" x 11'7"	220 sq. ft	No
4	Hall	19'11" x 6'5"	123 sq. ft	Yes
5	Recreation Room	43'4" x 46'5"	1865 sq. ft	Yes
6	Family Room	23'10" x 13'9"	368 sq. ft	Yes
7	Bedroom	12'6" x 13'9"	172 sq. ft	Yes
8	Storage	22'10" x 12'7"	234 sq. ft	No

Home report

1916 W County Rd 6,Berthoud,CO,US



Room dimensions

Floor 2 Total sqft: 3997    Living area: 2293

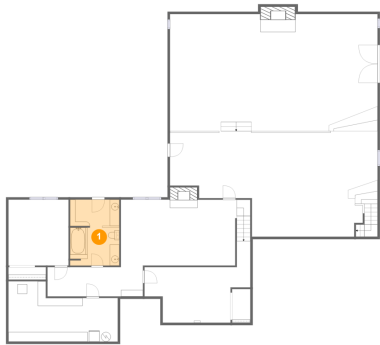
#		Dimensions	sqft	Counted as living area
9	Bath	6'9" x 21'6"	133 sq. ft	Yes
10	Open To Below	43'4" x 43'6"	1212 sq. ft	No
11	Bath	8'0" x 7'5"	52 sq. ft	Yes
12	Loft	33'0" x 21'7"	646 sq. ft	Yes
13	Patio	37'5" x 9'3"	333 sq. ft	No
14	Foyer	4'7" x 11'9"	54 sq. ft	Yes
15	Dining Area	10'1" x 11'9"	118 sq. ft	Yes
16	Hall	12'6" x 3'2"	40 sq. ft	Yes
17	Bedroom	9'10" x 12'2"	120 sq. ft	Yes
18	Living Room	26'3" x 13'11"	368 sq. ft	Yes
19	Porch	27'2" x 3'11"	107 sq. ft	No

Home report

1916 W County Rd 6,Berthoud,CO,US

#		Dimensions	sqft	Counted as living area
20	Kitchen	12'7" x 11'9"	148 sq. ft	Yes
21	Bedroom	10'3" x 15'9"	143 sq. ft	Yes
22	Bath	8'0" x 5'10"	45 sq. ft	Yes
23	Primary Bedroom	15'7" x 13'7"	181 sq. ft	Yes

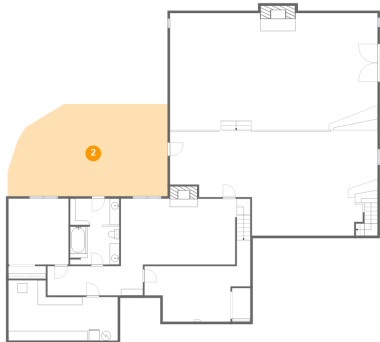
1 Floor 1 - Bath



Dimensions: 10'3" x 13'9"  
Area: 139 sq. ft  
Counted as living area: Yes

Heated: Yes  
Finished: Yes  
Enclosed: Yes  
Contiguous: Yes  
Permitted: Yes  
Wet space: Yes  
Addition: No  
Conversion: No

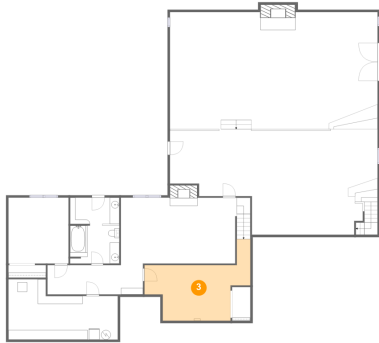
2 Floor 1 - Patio



Dimensions: 33'5" x 19'2"  
Area: 588 sq. ft  
Counted as living area: No

Heated: No  
Finished: Yes  
Enclosed: No  
Contiguous: Yes  
Permitted: Yes  
Wet space: No  
Addition: No  
Conversion: No

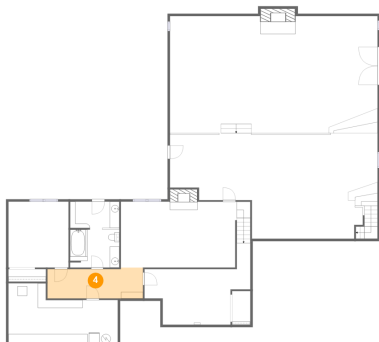
### 3 Floor 1 - Room



Dimensions: 22'1" x 11'7"  
Area: 220 sq. ft  
Counted as living area: No

Heated: Yes  
Finished: No  
Enclosed: Yes  
Contiguous: Yes  
Permitted: Yes  
Wet space: No  
Addition: No  
Conversion: No

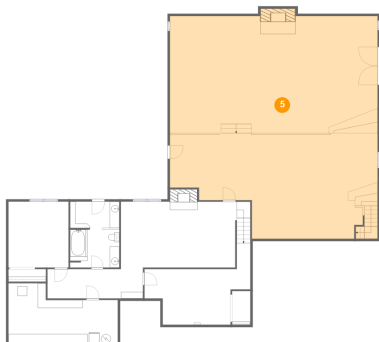
### 4 Floor 1 - Hall



Dimensions: 19'11" x 6'5"  
Area: 123 sq. ft  
Counted as living area: Yes

Heated: Yes  
Finished: Yes  
Enclosed: Yes  
Contiguous: Yes  
Permitted: Yes  
Wet space: No  
Addition: No  
Conversion: No

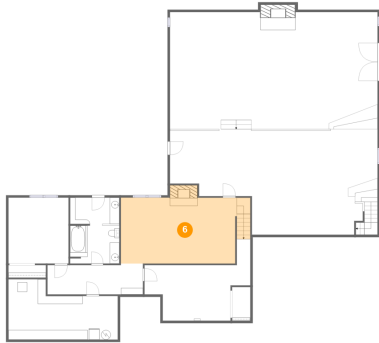
### 5 Floor 1 - Recreation Room



Dimensions: 43'4" x 46'5"  
Area: 1865 sq. ft  
Counted as living area: Yes

Heated: Yes  
Finished: Yes  
Enclosed: Yes  
Contiguous: Yes  
Permitted: Yes  
Wet space: No  
Addition: No  
Conversion: No

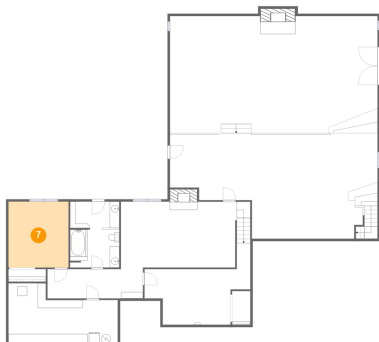
## 6 Floor 1 - Family Room



Dimensions: 23'10" x 13'9"  
Area: 368 sq. ft  
Counted as living area: Yes

Heated: Yes  
Finished: Yes  
Enclosed: Yes  
Contiguous: Yes  
Permitted: Yes  
Wet space: No  
Addition: No  
Conversion: No

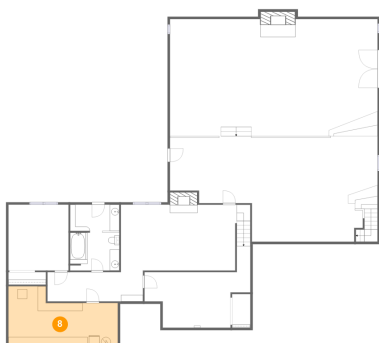
## 7 Floor 1 - Bedroom



Dimensions: 12'6" x 13'9"  
Area: 172 sq. ft  
Counted as living area: Yes

Heated: Yes  
Finished: Yes  
Enclosed: Yes  
Contiguous: Yes  
Permitted: Yes  
Wet space: No  
Addition: No  
Conversion: No

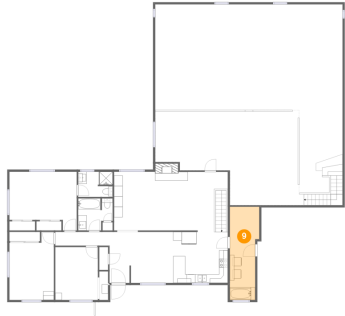
## 8 Floor 1 - Storage



Dimensions: 22'10" x 12'7"  
Area: 234 sq. ft  
Counted as living area: No

Heated: No  
Finished: No  
Enclosed: No  
Contiguous: Yes  
Permitted: Yes  
Wet space: No  
Addition: No  
Conversion: No

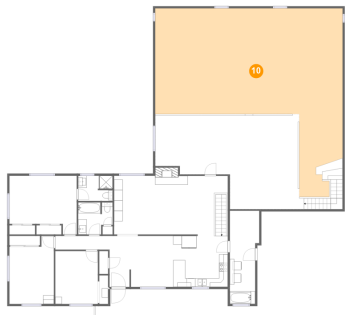
## 9 Floor 2 - Bath



Dimensions: 6'9" x 21'6"  
Area: 133 sq. ft  
Counted as living area: Yes

Heated: Yes  
Finished: Yes  
Enclosed: Yes  
Contiguous: Yes  
Permitted: Yes  
Wet space: Yes  
Addition: No  
Conversion: No

## 10 Floor 2 - Open To Below



Dimensions: 43'4" x 43'6"  
Area: 1212 sq. ft  
Counted as living area: No

Heated: No  
Finished: No  
Enclosed: No  
Contiguous: Yes  
Permitted: No  
Wet space: No  
Addition: No  
Conversion: No

## 11 Floor 2 - Bath

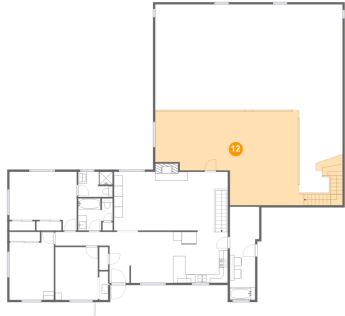


Dimensions: 8'0" x 7'5"  
Area: 52 sq. ft  
Counted as living area: Yes

Heated: Yes  
Finished: Yes  
Enclosed: Yes  
Contiguous: Yes  
Permitted: Yes  
Wet space: Yes  
Addition: No  
Conversion: No



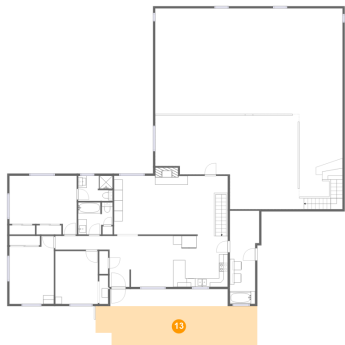
## 12 Floor 2 - Loft



Dimensions: 33'0" x 21'7"  
Area: 646 sq. ft  
Counted as living area: Yes

Heated: Yes  
Finished: Yes  
Enclosed: Yes  
Contiguous: Yes  
Permitted: Yes  
Wet space: No  
Addition: No  
Conversion: No

## 13 Floor 2 - Patio



Dimensions: 37'5" x 9'3"  
Area: 333 sq. ft  
Counted as living area: No

Heated: No  
Finished: Yes  
Enclosed: No  
Contiguous: Yes  
Permitted: Yes  
Wet space: No  
Addition: No  
Conversion: No

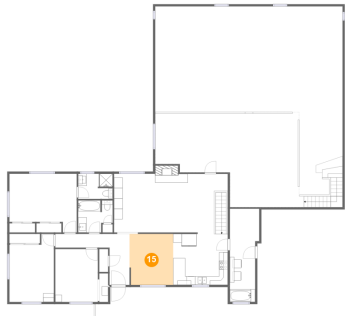
## 14 Floor 2 - Foyer



Dimensions: 4'7" x 11'9"  
Area: 54 sq. ft  
Counted as living area: Yes

Heated: Yes  
Finished: Yes  
Enclosed: Yes  
Contiguous: Yes  
Permitted: Yes  
Wet space: No  
Addition: No  
Conversion: No

## 15 Floor 2 - Dining Area



Dimensions: 10'1" x 11'9"  
Area: 118 sq. ft  
Counted as living area: Yes

Heated: Yes  
Finished: Yes  
Enclosed: Yes  
Contiguous: Yes  
Permitted: Yes  
Wet space: No  
Addition: No  
Conversion: No

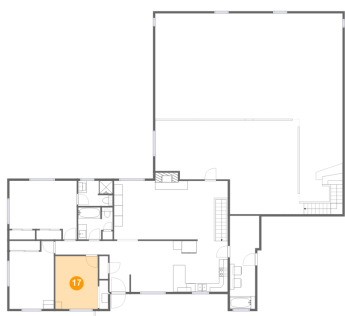
## 16 Floor 2 - Hall



Dimensions: 12'6" x 3'2"  
Area: 40 sq. ft  
Counted as living area: Yes

Heated: Yes  
Finished: Yes  
Enclosed: Yes  
Contiguous: Yes  
Permitted: Yes  
Wet space: No  
Addition: No  
Conversion: No

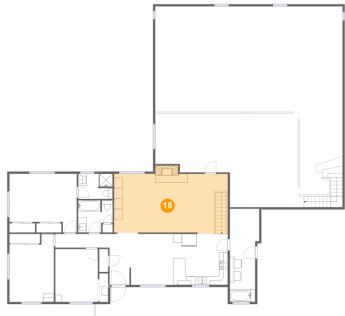
## 17 Floor 2 - Bedroom



Dimensions: 9'10" x 12'2"  
Area: 120 sq. ft  
Counted as living area: Yes

Heated: Yes  
Finished: Yes  
Enclosed: Yes  
Contiguous: Yes  
Permitted: Yes  
Wet space: No  
Addition: No  
Conversion: No

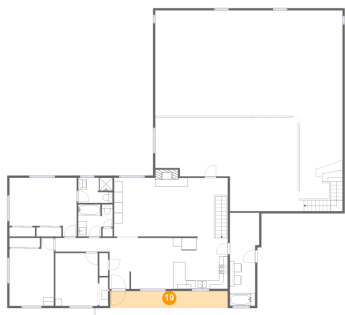
## 18 Floor 2 - Living Room



Dimensions: 26'3" x 13'11"  
Area: 368 sq. ft  
Counted as living area: Yes

Heated: Yes  
Finished: Yes  
Enclosed: Yes  
Contiguous: Yes  
Permitted: Yes  
Wet space: No  
Addition: No  
Conversion: No

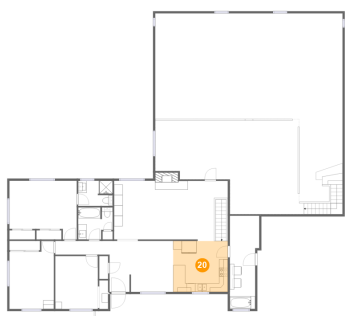
## 19 Floor 2 - Porch



Dimensions: 27'2" x 3'11"  
Area: 107 sq. ft  
Counted as living area: No

Heated: No  
Finished: Yes  
Enclosed: No  
Contiguous: Yes  
Permitted: Yes  
Wet space: No  
Addition: No  
Conversion: No

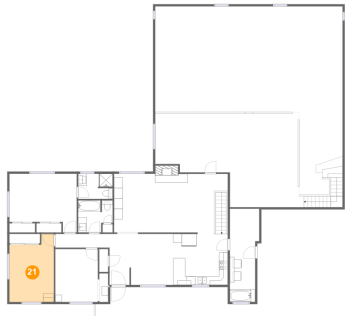
## 20 Floor 2 - Kitchen



Dimensions: 12'7" x 11'9"  
Area: 148 sq. ft  
Counted as living area: Yes

Heated: Yes  
Finished: Yes  
Enclosed: Yes  
Contiguous: Yes  
Permitted: Yes  
Wet space: No  
Addition: No  
Conversion: No

## 21 Floor 2 - Bedroom



Dimensions: 10'3" x 15'9"  
Area: 143 sq. ft  
Counted as living area: Yes

Heated: Yes  
Finished: Yes  
Enclosed: Yes  
Contiguous: Yes  
Permitted: Yes  
Wet space: No  
Addition: No  
Conversion: No

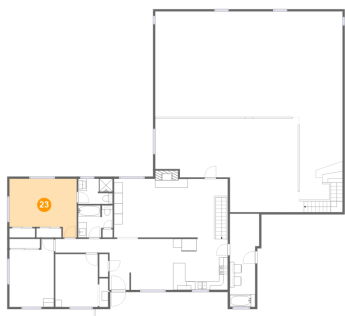
## 22 Floor 2 - Bath



Dimensions: 8'0" x 5'10"  
Area: 45 sq. ft  
Counted as living area: Yes

Heated: Yes  
Finished: Yes  
Enclosed: Yes  
Contiguous: Yes  
Permitted: Yes  
Wet space: Yes  
Addition: No  
Conversion: No

## 23 Floor 2 - Primary Bedroom



Dimensions: 15'7" x 13'7"  
Area: 181 sq. ft  
Counted as living area: Yes

Heated: Yes  
Finished: Yes  
Enclosed: Yes  
Contiguous: Yes  
Permitted: Yes  
Wet space: No  
Addition: No  
Conversion: No