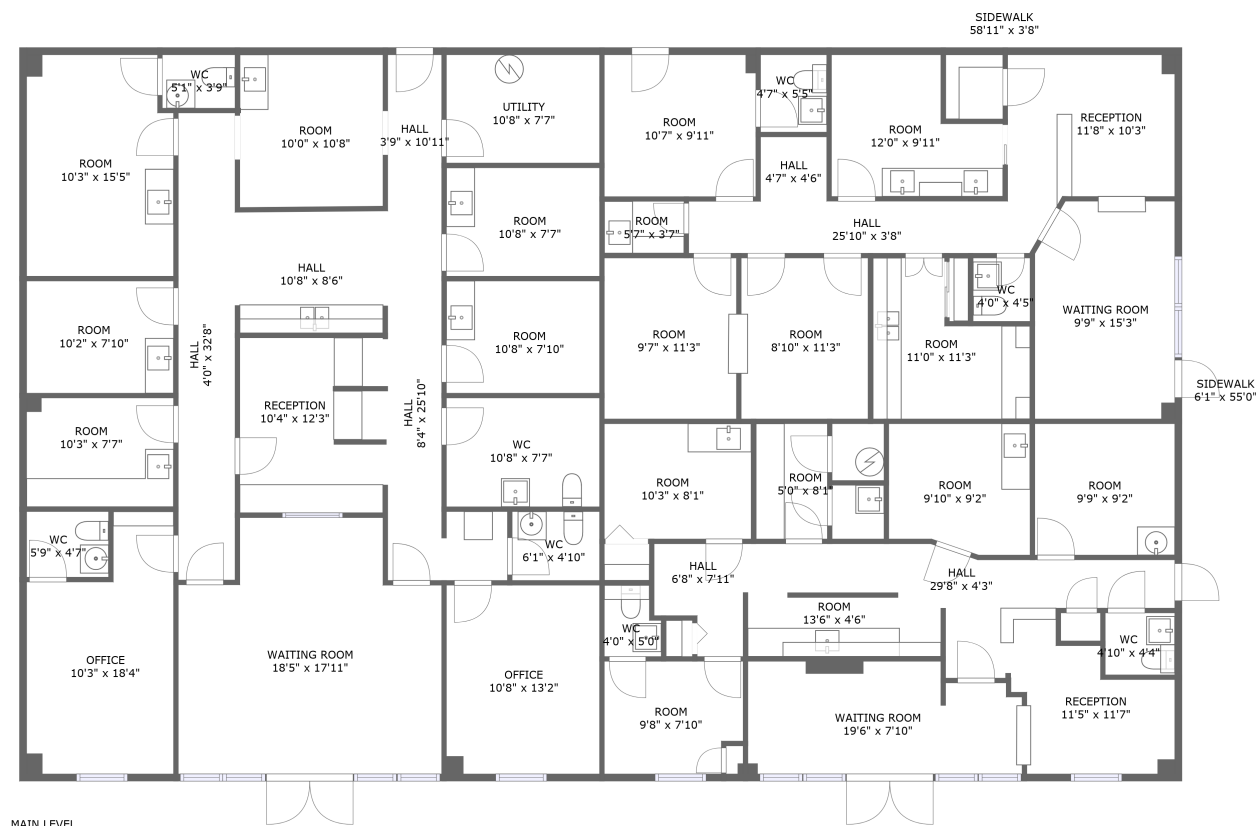


Home report

1930 Braeburn Drive, Salem, Salem city, Virginia, United States, 24153



Total Area: 4077 sq. ft

Floor 1: 4077 sq. ft

Excluded: Utility 86 sq. ft, Sidewalk 555 sq. ft

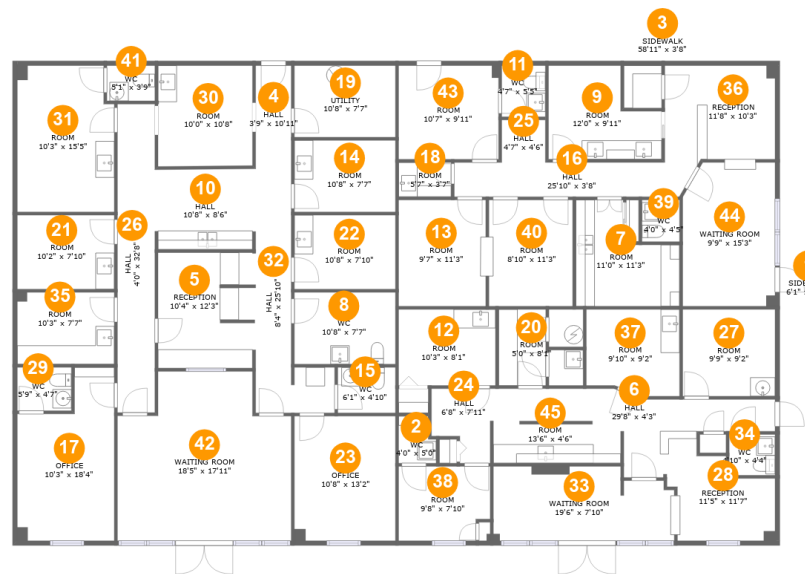
Property summary

1 Floors

8 Half baths

Home report

1930 Braeburn Drive, Salem, Salem city, Virginia, United States, 24153



Room dimensions

Floor 1 Total:4077sqft Excluded: 641sqft

#		Max Dimensions	sqft	Included
1	Sidewalk	6'1" x 55'0"	335 sq. ft	No
2	WC	4'0" x 5'0"	18 sq. ft	Yes
3	Sidewalk	58'11" x 3'8"	220 sq. ft	No
4	Hall	3'9" x 10'11"	41 sq. ft	Yes
5	Reception	10'4" x 12'3"	126 sq. ft	Yes
6	Hall	29'8" x 4'3"	102 sq. ft	Yes
7	Room	11'0" x 11'3"	95 sq. ft	Yes
8	WC	10'8" x 7'7"	81 sq. ft	Yes
9	Room	12'0" x 9'11"	98 sq. ft	Yes
10	Hall	10'8" x 8'6"	89 sq. ft	Yes
11	WC	4'7" x 5'5"	25 sq. ft	Yes

## Home report

**1930 Braeburn Drive, Salem, Salem city, Virginia, United States,  
24153**

#		Max Dimensions	sqft	Included
12	Room	10'3" x 8'1"	83 sq. ft	Yes
13	Room	9'7" x 11'3"	105 sq. ft	Yes
14	Room	10'8" x 7'7"	81 sq. ft	Yes
15	WC	6'1" x 4'10"	29 sq. ft	Yes
16	Hall	25'10" x 3'8"	90 sq. ft	Yes
17	Office	10'3" x 18'4"	158 sq. ft	Yes
18	Room	5'7" x 3'7"	20 sq. ft	Yes
19	Utility	10'8" x 7'7"	81 sq. ft	No
20	Room	5'0" x 8'1"	40 sq. ft	Yes
21	Room	10'2" x 7'10"	80 sq. ft	Yes
22	Room	10'8" x 7'10"	84 sq. ft	Yes
23	Office	10'8" x 13'2"	141 sq. ft	Yes
24	Hall	6'8" x 7'11"	42 sq. ft	Yes
25	Hall	4'7" x 4'6"	21 sq. ft	Yes
26	Hall	4'0" x 32'8"	129 sq. ft	Yes
27	Room	9'9" x 9'2"	90 sq. ft	Yes
28	Reception	11'5" x 11'7"	115 sq. ft	Yes
29	WC	5'9" x 4'7"	26 sq. ft	Yes
30	Room	10'0" x 10'8"	106 sq. ft	Yes
31	Room	10'3" x 15'5"	154 sq. ft	Yes
32	Hall	8'4" x 25'10"	119 sq. ft	Yes

## Home report

**1930 Braeburn Drive, Salem, Salem city, Virginia, United States,  
24153**

#		Max Dimensions	sqft	Included
33	Waiting Room	19'6" x 7'10"	142 sq. ft	Yes
34	WC	4'10" x 4'4"	21 sq. ft	Yes
35	Room	10'3" x 7'7"	78 sq. ft	Yes
36	Reception	11'8" x 10'3"	118 sq. ft	Yes
37	Room	9'10" x 9'2"	85 sq. ft	Yes
38	Room	9'8" x 7'10"	73 sq. ft	Yes
39	WC	4'0" x 4'5"	18 sq. ft	Yes
40	Room	8'10" x 11'3"	100 sq. ft	Yes
41	WC	5'1" x 3'9"	19 sq. ft	Yes
42	Waiting Room	18'5" x 17'11"	290 sq. ft	Yes
43	Room	10'7" x 9'11"	105 sq. ft	Yes
44	Waiting Room	9'9" x 15'3"	145 sq. ft	Yes
45	Room	13'6" x 4'6"	60 sq. ft	Yes

1 Floor 1 - Sidewalk



Max Dimensions: 6'1" x 55'0"  
Calculated Area: 335 sq. ft  
Included: No

Heated: No  
Finished: Yes  
Enclosed: No  
Contiguous: Yes  
Permitted: Yes  
Wet space: No  
Addition: No  
Conversion: No

2 Floor 1 - WC

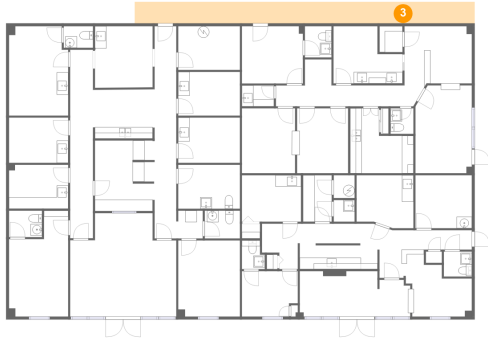


Max Dimensions: 4'0" x 5'0"  
Calculated Area: 18 sq. ft  
Included: Yes

Heated: Yes  
Finished: Yes  
Enclosed: Yes  
Contiguous: Yes  
Permitted: Yes  
Wet space: Yes  
Addition: No  
Conversion: No

1930 Braeburn Drive, Salem, Salem city, Virginia, United States, 24153

### 3 Floor 1 - Sidewalk



Max Dimensions: 58'11" x 3'8"  
Calculated Area: 220 sq. ft  
Included: No

Heated: No  
Finished: Yes  
Enclosed: No  
Contiguous: Yes  
Permitted: Yes  
Wet space: No  
Addition: No  
Conversion: No

### 4 Floor 1 - Hall



Max Dimensions: 3'9" x 10'11"  
Calculated Area: 41 sq. ft  
Included: Yes

Heated: Yes  
Finished: Yes  
Enclosed: Yes  
Contiguous: Yes  
Permitted: Yes  
Wet space: No  
Addition: No  
Conversion: No

### 5 Floor 1 - Reception



Max Dimensions: 10'4" x 12'3"  
Calculated Area: 126 sq. ft  
Included: Yes

Heated: Yes  
Finished: Yes  
Enclosed: Yes  
Contiguous: Yes  
Permitted: Yes  
Wet space: No  
Addition: No  
Conversion: No

6 Floor 1 - Hall



Max Dimensions: 29'8" x 4'3"  
Calculated Area: 102 sq. ft  
Included: Yes

Heated: Yes  
Finished: Yes  
Enclosed: Yes  
Contiguous: Yes  
Permitted: Yes  
Wet space: No  
Addition: No  
Conversion: No

7 Floor 1 - Room



Max Dimensions: 11'0" x 11'3"  
Calculated Area: 95 sq. ft  
Included: Yes

Heated: Yes  
Finished: Yes  
Enclosed: Yes  
Contiguous: Yes  
Permitted: Yes  
Wet space: No  
Addition: No  
Conversion: No

8 Floor 1 - WC



Max Dimensions: 10'8" x 7'7"  
Calculated Area: 81 sq. ft  
Included: Yes

Heated: Yes  
Finished: Yes  
Enclosed: Yes  
Contiguous: Yes  
Permitted: Yes  
Wet space: No  
Addition: No  
Conversion: No

1930 Braeburn Drive, Salem, Salem city, Virginia, United States,  
24153

## 9 Floor 1 - Room



Max Dimensions: 12'0" x 9'11"  
Calculated Area: 98 sq. ft  
Included: Yes

Heated: Yes  
Finished: Yes  
Enclosed: Yes  
Contiguous: Yes  
Permitted: Yes  
Wet space: No  
Addition: No  
Conversion: No

## 10 Floor 1 - Hall



Max Dimensions: 10'8" x 8'6"  
Calculated Area: 89 sq. ft  
Included: Yes

Heated: Yes  
Finished: Yes  
Enclosed: Yes  
Contiguous: Yes  
Permitted: Yes  
Wet space: No  
Addition: No  
Conversion: No

## 11 Floor 1 - WC



Max Dimensions: 4'7" x 5'5"  
Calculated Area: 25 sq. ft  
Included: Yes

Heated: Yes  
Finished: Yes  
Enclosed: Yes  
Contiguous: Yes  
Permitted: Yes  
Wet space: Yes  
Addition: No  
Conversion: No



12 Floor 1 - Room



Max Dimensions: 10'3" x 8'1"  
Calculated Area: 83 sq. ft  
Included: Yes

Heated: Yes  
Finished: Yes  
Enclosed: Yes  
Contiguous: Yes  
Permitted: Yes  
Wet space: No  
Addition: No  
Conversion: No

13 Floor 1 - Room



Max Dimensions: 9'7" x 11'3"  
Calculated Area: 105 sq. ft  
Included: Yes

Heated: Yes  
Finished: Yes  
Enclosed: Yes  
Contiguous: Yes  
Permitted: Yes  
Wet space: No  
Addition: No  
Conversion: No

14 Floor 1 - Room



Max Dimensions: 10'8" x 7'7"  
Calculated Area: 81 sq. ft  
Included: Yes

Heated: Yes  
Finished: Yes  
Enclosed: Yes  
Contiguous: Yes  
Permitted: Yes  
Wet space: No  
Addition: No  
Conversion: No

15 Floor 1 - WC



Max Dimensions: 6'1" x 4'10"  
Calculated Area: 29 sq. ft  
Included: Yes

Heated: Yes  
Finished: Yes  
Enclosed: Yes  
Contiguous: Yes  
Permitted: Yes  
Wet space: Yes  
Addition: No  
Conversion: No

16 Floor 1 - Hall



Max Dimensions: 25'10" x 3'8"  
Calculated Area: 90 sq. ft  
Included: Yes

Heated: Yes  
Finished: Yes  
Enclosed: Yes  
Contiguous: Yes  
Permitted: Yes  
Wet space: No  
Addition: No  
Conversion: No

17 Floor 1 - Office



Max Dimensions: 10'3" x 18'4"  
Calculated Area: 158 sq. ft  
Included: Yes

Heated: Yes  
Finished: Yes  
Enclosed: Yes  
Contiguous: Yes  
Permitted: Yes  
Wet space: No  
Addition: No  
Conversion: No

1930 Braeburn Drive, Salem, Salem city, Virginia, United States,  
24153

### 18 Floor 1 - Room



Max Dimensions: 5'7" x 3'7"  
Calculated Area: 20 sq. ft  
Included: Yes

Heated: Yes  
Finished: Yes  
Enclosed: Yes  
Contiguous: Yes  
Permitted: Yes  
Wet space: No  
Addition: No  
Conversion: No

### 19 Floor 1 - Utility



Max Dimensions: 10'8" x 7'7"  
Calculated Area: 81 sq. ft  
Included: No

Heated: Yes  
Finished: No  
Enclosed: Yes  
Contiguous: Yes  
Permitted: Yes  
Wet space: No  
Addition: No  
Conversion: No

### 20 Floor 1 - Room



Max Dimensions: 5'0" x 8'1"  
Calculated Area: 40 sq. ft  
Included: Yes

Heated: Yes  
Finished: Yes  
Enclosed: Yes  
Contiguous: Yes  
Permitted: Yes  
Wet space: No  
Addition: No  
Conversion: No

1930 Braeburn Drive, Salem, Salem city, Virginia, United States,  
24153

## 21 Floor 1 - Room



Max Dimensions: 10'2" x 7'10"  
Calculated Area: 80 sq. ft  
Included: Yes

Heated: Yes  
Finished: Yes  
Enclosed: Yes  
Contiguous: Yes  
Permitted: Yes  
Wet space: No  
Addition: No  
Conversion: No

## 22 Floor 1 - Room



Max Dimensions: 10'8" x 7'10"  
Calculated Area: 84 sq. ft  
Included: Yes

Heated: Yes  
Finished: Yes  
Enclosed: Yes  
Contiguous: Yes  
Permitted: Yes  
Wet space: No  
Addition: No  
Conversion: No

## 23 Floor 1 - Office



Max Dimensions: 10'8" x 13'2"  
Calculated Area: 141 sq. ft  
Included: Yes

Heated: Yes  
Finished: Yes  
Enclosed: Yes  
Contiguous: Yes  
Permitted: Yes  
Wet space: No  
Addition: No  
Conversion: No

24 Floor 1 - Hall



Max Dimensions: 6'8" x 7'11"  
Calculated Area: 42 sq. ft  
Included: Yes

Heated: Yes  
Finished: Yes  
Enclosed: Yes  
Contiguous: Yes  
Permitted: Yes  
Wet space: No  
Addition: No  
Conversion: No

25 Floor 1 - Hall



Max Dimensions: 4'7" x 4'6"  
Calculated Area: 21 sq. ft  
Included: Yes

Heated: Yes  
Finished: Yes  
Enclosed: Yes  
Contiguous: Yes  
Permitted: Yes  
Wet space: No  
Addition: No  
Conversion: No

26 Floor 1 - Hall



Max Dimensions: 4'0" x 32'8"  
Calculated Area: 129 sq. ft  
Included: Yes

Heated: Yes  
Finished: Yes  
Enclosed: Yes  
Contiguous: Yes  
Permitted: Yes  
Wet space: No  
Addition: No  
Conversion: No

## Home report

1930 Braeburn Drive, Salem, Salem city, Virginia, United States, 24153

### 27 Floor 1 - Room



Max Dimensions: 9'9" x 9'2"  
Calculated Area: 90 sq. ft  
Included: Yes

Heated: Yes  
Finished: Yes  
Enclosed: Yes  
Contiguous: Yes  
Permitted: Yes  
Wet space: No  
Addition: No  
Conversion: No

### 28 Floor 1 - Reception



Max Dimensions: 11'5" x 11'7"  
Calculated Area: 115 sq. ft  
Included: Yes

Heated: Yes  
Finished: Yes  
Enclosed: Yes  
Contiguous: Yes  
Permitted: Yes  
Wet space: No  
Addition: No  
Conversion: No

### 29 Floor 1 - WC



Max Dimensions: 5'9" x 4'7"  
Calculated Area: 26 sq. ft  
Included: Yes

Heated: Yes  
Finished: Yes  
Enclosed: Yes  
Contiguous: Yes  
Permitted: Yes  
Wet space: Yes  
Addition: No  
Conversion: No

## Home report

1930 Braeburn Drive, Salem, Salem city, Virginia, United States, 24153

### 30 Floor 1 - Room



Max Dimensions: 10'0" x 10'8"  
Calculated Area: 106 sq. ft  
Included: Yes

Heated: Yes  
Finished: Yes  
Enclosed: Yes  
Contiguous: Yes  
Permitted: Yes  
Wet space: No  
Addition: No  
Conversion: No

### 31 Floor 1 - Room



Max Dimensions: 10'3" x 15'5"  
Calculated Area: 154 sq. ft  
Included: Yes

Heated: Yes  
Finished: Yes  
Enclosed: Yes  
Contiguous: Yes  
Permitted: Yes  
Wet space: No  
Addition: No  
Conversion: No

### 32 Floor 1 - Hall



Max Dimensions: 8'4" x 25'10"  
Calculated Area: 119 sq. ft  
Included: Yes

Heated: Yes  
Finished: Yes  
Enclosed: Yes  
Contiguous: Yes  
Permitted: Yes  
Wet space: No  
Addition: No  
Conversion: No

33 Floor 1 - Waiting Room



Max Dimensions: 19'6" x 7'10"  
Calculated Area: 142 sq. ft  
Included: Yes

Heated: Yes  
Finished: Yes  
Enclosed: Yes  
Contiguous: Yes  
Permitted: Yes  
Wet space: No  
Addition: No  
Conversion: No

34 Floor 1 - WC



Max Dimensions: 4'10" x 4'4"  
Calculated Area: 21 sq. ft  
Included: Yes

Heated: Yes  
Finished: Yes  
Enclosed: Yes  
Contiguous: Yes  
Permitted: Yes  
Wet space: Yes  
Addition: No  
Conversion: No

35 Floor 1 - Room



Max Dimensions: 10'3" x 7'7"  
Calculated Area: 78 sq. ft  
Included: Yes

Heated: Yes  
Finished: Yes  
Enclosed: Yes  
Contiguous: Yes  
Permitted: Yes  
Wet space: No  
Addition: No  
Conversion: No



36 Floor 1 - Reception



Max Dimensions: 11'8" x 10'3"  
Calculated Area: 118 sq. ft  
Included: Yes

Heated: Yes  
Finished: Yes  
Enclosed: Yes  
Contiguous: Yes  
Permitted: Yes  
Wet space: No  
Addition: No  
Conversion: No

37 Floor 1 - Room



Max Dimensions: 9'10" x 9'2"  
Calculated Area: 85 sq. ft  
Included: Yes

Heated: Yes  
Finished: Yes  
Enclosed: Yes  
Contiguous: Yes  
Permitted: Yes  
Wet space: No  
Addition: No  
Conversion: No

38 Floor 1 - Room



Max Dimensions: 9'8" x 7'10"  
Calculated Area: 73 sq. ft  
Included: Yes

Heated: Yes  
Finished: Yes  
Enclosed: Yes  
Contiguous: Yes  
Permitted: Yes  
Wet space: No  
Addition: No  
Conversion: No

1930 Braeburn Drive, Salem, Salem city, Virginia, United States,  
24153

### 39 Floor 1 - WC



Max Dimensions: 4'0" x 4'5"  
Calculated Area: 18 sq. ft  
Included: Yes

Heated: Yes  
Finished: Yes  
Enclosed: Yes  
Contiguous: Yes  
Permitted: Yes  
Wet space: Yes  
Addition: No  
Conversion: No

### 40 Floor 1 - Room



Max Dimensions: 8'10" x 11'3"  
Calculated Area: 100 sq. ft  
Included: Yes

Heated: Yes  
Finished: Yes  
Enclosed: Yes  
Contiguous: Yes  
Permitted: Yes  
Wet space: No  
Addition: No  
Conversion: No

### 41 Floor 1 - WC



Max Dimensions: 5'1" x 3'9"  
Calculated Area: 19 sq. ft  
Included: Yes

Heated: Yes  
Finished: Yes  
Enclosed: Yes  
Contiguous: Yes  
Permitted: Yes  
Wet space: Yes  
Addition: No  
Conversion: No

42 Floor 1 - Waiting Room



Max Dimensions: 18'5" x 17'11"  
Calculated Area: 290 sq. ft  
Included: Yes

Heated: Yes  
Finished: Yes  
Enclosed: Yes  
Contiguous: Yes  
Permitted: Yes  
Wet space: No  
Addition: No  
Conversion: No

43 Floor 1 - Room



Max Dimensions: 10'7" x 9'11"  
Calculated Area: 105 sq. ft  
Included: Yes

Heated: Yes  
Finished: Yes  
Enclosed: Yes  
Contiguous: Yes  
Permitted: Yes  
Wet space: No  
Addition: No  
Conversion: No

44 Floor 1 - Waiting Room



Max Dimensions: 9'9" x 15'3"  
Calculated Area: 145 sq. ft  
Included: Yes

Heated: Yes  
Finished: Yes  
Enclosed: Yes  
Contiguous: Yes  
Permitted: Yes  
Wet space: No  
Addition: No  
Conversion: No

1930 Braeburn Drive, Salem, Salem city, Virginia, United States, 24153

**45** Floor 1 - Room



Max Dimensions: 13'6" x 4'6"  
Calculated Area: 60 sq. ft  
Included: Yes

Heated: Yes  
Finished: Yes  
Enclosed: Yes  
Contiguous: Yes  
Permitted: Yes  
Wet space: No  
Addition: No  
Conversion: No