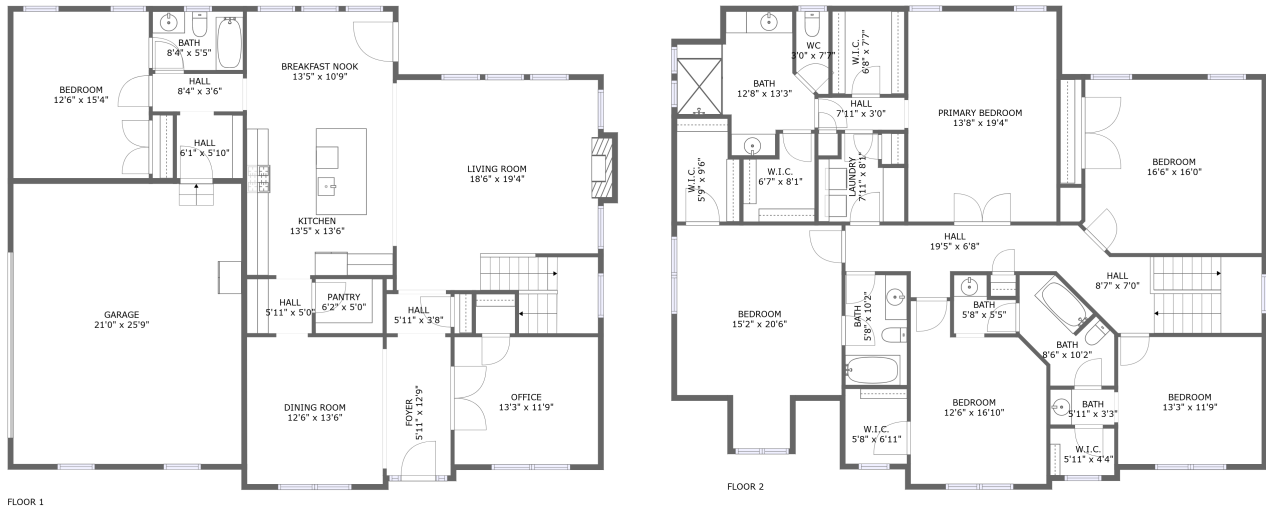


15512 Match Rail Pl, Chesterfield, VA, US



Property summary

 **1** Garages

 **6** Bedrooms

 **4** Bathrooms

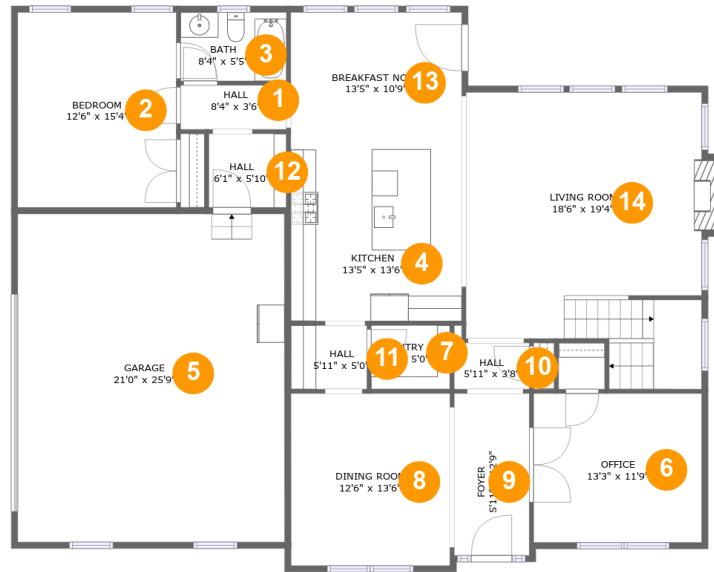
 **0** Half baths

 **2** Floors

 **3,829** Gross living area sqft

 **4,422** Total sqft

15512 Match Rail Pl, Chesterfield, VA, US



Room dimensions

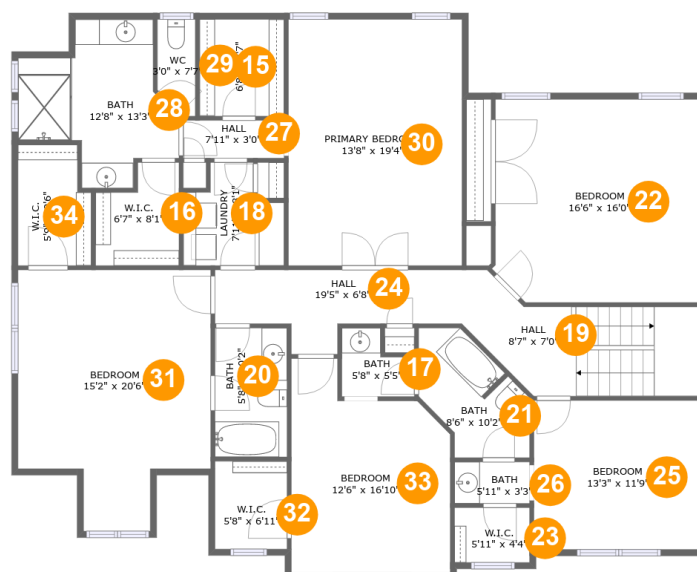
Floor 1

Total sqft: 2256 Living area: 1683

#		Dimensions	sqft	Counted as living area
1	Hall	8'4" x 3'6"	29 sq. ft	Yes
2	Bedroom	12'6" x 15'4"	191 sq. ft	Yes
3	Bath	8'4" x 5'5"	45 sq. ft	Yes
4	Kitchen	13'5" x 13'6"	181 sq. ft	Yes
5	Garage	21'0" x 25'9"	541 sq. ft	No
6	Office	13'3" x 11'9"	155 sq. ft	Yes
7	Pantry	6'2" x 5'0"	31 sq. ft	Yes
8	Dining Room	12'6" x 13'6"	169 sq. ft	Yes
9	Foyer	5'11" x 12'9"	75 sq. ft	Yes
10	Hall	5'11" x 3'8"	21 sq. ft	Yes
11	Hall	5'11" x 5'0"	30 sq. ft	Yes

15512 Match Rail Pl, Chesterfield, VA, US

#		Dimensions	sqft	Counted as living area
12	Hall	6'1" x 5'10"	35 sq. ft	Yes
13	Breakfast Nook	13'5" x 10'9"	145 sq. ft	Yes
14	Living Room	18'6" x 19'4"	393 sq. ft	Yes

15512 Match Rail Pl, Chesterfield, VA, US**Room dimensions**

Floor 2

Total sqft: 2166 Living area: 2146

#		Dimensions	sqft	Counted as living area
15	W.I.C.	6'8" x 7'7"	51 sq. ft	Yes
16	W.I.C.	6'7" x 8'1"	45 sq. ft	Yes
17	Bath	5'8" x 5'5"	25 sq. ft	Yes
18	Laundry	7'11" x 8'1"	52 sq. ft	Yes
19	Hall	8'7" x 7'0"	126 sq. ft	Yes
20	Bath	5'8" x 10'2"	57 sq. ft	Yes
21	Bath	8'6" x 10'2"	63 sq. ft	Yes
22	Bedroom	16'6" x 16'0"	257 sq. ft	Yes
23	W.I.C.	5'11" x 4'4"	25 sq. ft	Yes
24	Hall	19'5" x 6'8"	91 sq. ft	Yes
25	Bedroom	13'3" x 11'9"	155 sq. ft	Yes

Scan captured on Mon, 10 Feb 2025 21:38:36 GMT

Information is calculated by Cubicasa technology deemed highly reliable but not guaranteed.

15512 Match Rail Pl, Chesterfield, VA, US

#		Dimensions	sqft	Counted as living area
26	Bath	5'11" x 3'3"	19 sq. ft	Yes
27	Hall	7'11" x 3'0"	24 sq. ft	Yes
28	Bath	12'8" x 13'3"	113 sq. ft	Yes
29	WC	3'0" x 7'7"	21 sq. ft	Yes
30	Primary Bedroom	13'8" x 19'4"	264 sq. ft	Yes
31	Bedroom	15'2" x 20'6"	248 sq. ft	Yes
32	W.I.C.	5'8" x 6'11"	39 sq. ft	Yes
33	Bedroom	12'6" x 16'10"	177 sq. ft	Yes
34	W.I.C.	5'9" x 9'6"	51 sq. ft	Yes

15512 Match Rail Pl, Chesterfield, VA, US

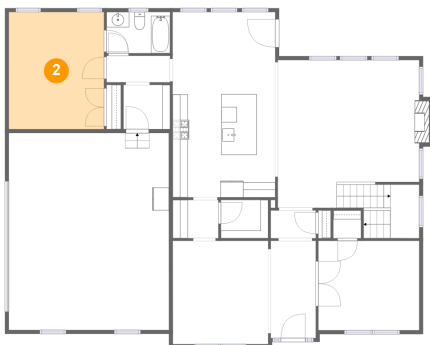
1 Floor 1 - Hall



Dimensions: 8'4" x 3'6"
Area: 29 sq. ft
Counted as living area: Yes

Heated: Yes
Finished: Yes
Enclosed: Yes
Contiguous: Yes
Permitted: Yes
Wet space: No
Addition: No
Conversion: No

2 Floor 1 - Bedroom

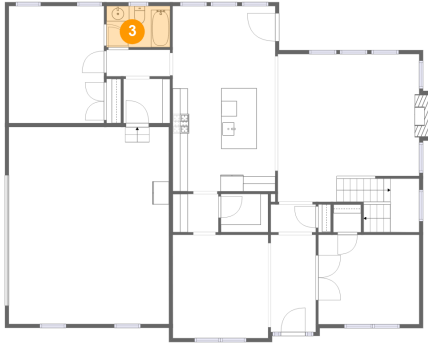


Dimensions: 12'6" x 15'4"
Area: 191 sq. ft
Counted as living area: Yes

Heated: Yes
Finished: Yes
Enclosed: Yes
Contiguous: Yes
Permitted: Yes
Wet space: No
Addition: No
Conversion: No

15512 Match Rail Pl, Chesterfield, VA, US

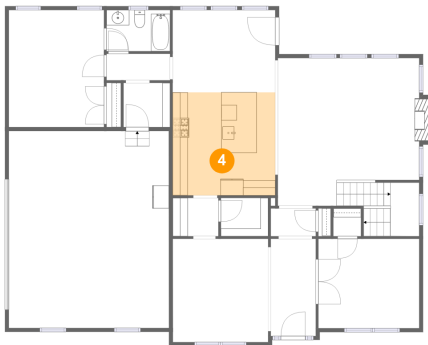
3 Floor 1 - Bath



Dimensions: 8'4" x 5'5"
Area: 45 sq. ft
Counted as living area: Yes

Heated: Yes
Finished: Yes
Enclosed: Yes
Contiguous: Yes
Permitted: Yes
Wet space: Yes
Addition: No
Conversion: No

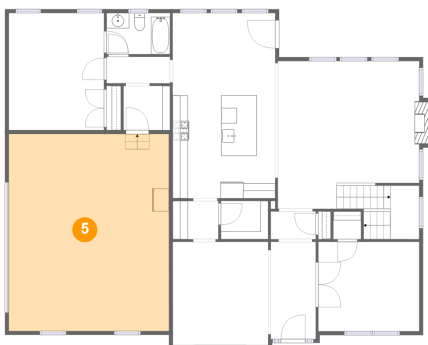
4 Floor 1 - Kitchen



Dimensions: 13'5" x 13'6"
Area: 181 sq. ft
Counted as living area: Yes

Heated: Yes
Finished: Yes
Enclosed: Yes
Contiguous: Yes
Permitted: Yes
Wet space: No
Addition: No
Conversion: No

5 Floor 1 - Garage

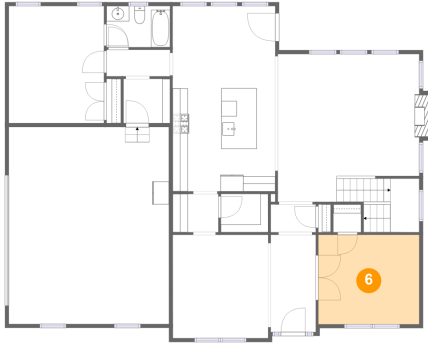


Dimensions: 21'0" x 25'9"
Area: 541 sq. ft
Counted as living area: No

Heated: No
Finished: No
Enclosed: Yes
Contiguous: Yes
Permitted: Yes
Wet space: No
Addition: No
Conversion: No

15512 Match Rail Pl, Chesterfield, VA, US

6 Floor 1 - Office



Dimensions: 13'3" x 11'9"
Area: 155 sq. ft
Counted as living area: Yes

Heated: Yes
Finished: Yes
Enclosed: Yes
Contiguous: Yes
Permitted: Yes
Wet space: No
Addition: No
Conversion: No

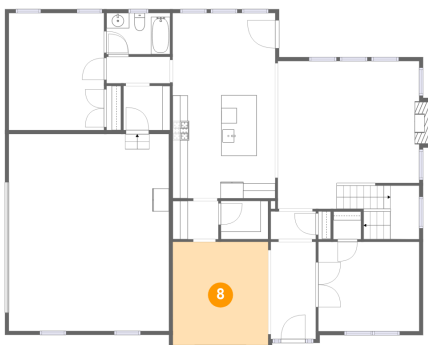
7 Floor 1 - Pantry



Dimensions: 6'2" x 5'0"
Area: 31 sq. ft
Counted as living area: Yes

Heated: Yes
Finished: Yes
Enclosed: Yes
Contiguous: Yes
Permitted: Yes
Wet space: No
Addition: No
Conversion: No

8 Floor 1 - Dining Room



Dimensions: 12'6" x 13'6"
Area: 169 sq. ft
Counted as living area: Yes

Heated: Yes
Finished: Yes
Enclosed: Yes
Contiguous: Yes
Permitted: Yes
Wet space: No
Addition: No
Conversion: No

15512 Match Rail Pl, Chesterfield, VA, US

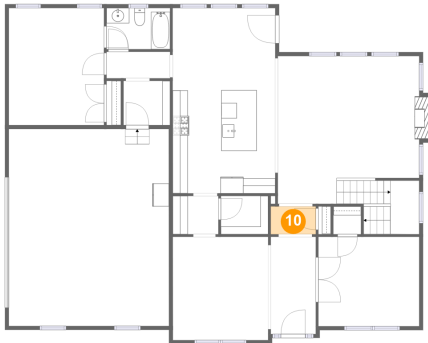
9 Floor 1 - Foyer



Dimensions: 5'11" x 12'9"
Area: 75 sq. ft
Counted as living area: Yes

Heated: Yes
Finished: Yes
Enclosed: Yes
Contiguous: Yes
Permitted: Yes
Wet space: No
Addition: No
Conversion: No

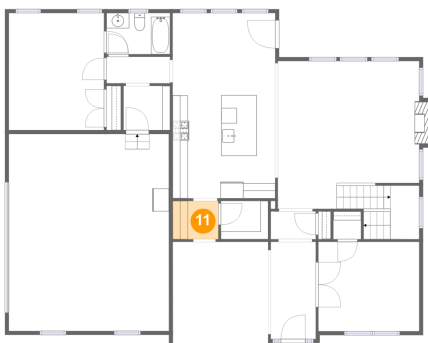
10 Floor 1 - Hall



Dimensions: 5'11" x 3'8"
Area: 21 sq. ft
Counted as living area: Yes

Heated: Yes
Finished: Yes
Enclosed: Yes
Contiguous: Yes
Permitted: Yes
Wet space: No
Addition: No
Conversion: No

11 Floor 1 - Hall



Dimensions: 5'11" x 5'0"
Area: 30 sq. ft
Counted as living area: Yes

Heated: Yes
Finished: Yes
Enclosed: Yes
Contiguous: Yes
Permitted: Yes
Wet space: No
Addition: No
Conversion: No

15512 Match Rail Pl, Chesterfield, VA, US

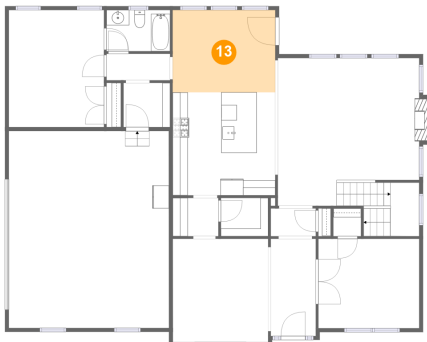
12 Floor 1 - Hall



Dimensions: 6'1" x 5'10"
Area: 35 sq. ft
Counted as living area: Yes

Heated: Yes
Finished: Yes
Enclosed: Yes
Contiguous: Yes
Permitted: Yes
Wet space: No
Addition: No
Conversion: No

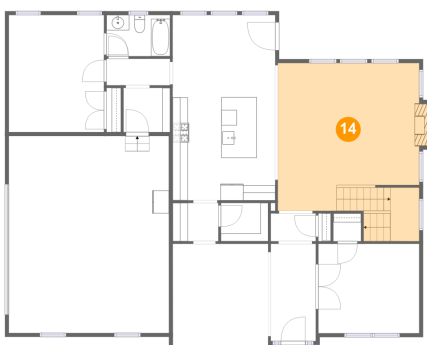
13 Floor 1 - Breakfast Nook



Dimensions: 13'5" x 10'9"
Area: 145 sq. ft
Counted as living area: Yes

Heated: Yes
Finished: Yes
Enclosed: Yes
Contiguous: Yes
Permitted: Yes
Wet space: No
Addition: No
Conversion: No

14 Floor 1 - Living Room



Dimensions: 18'6" x 19'4"
Area: 393 sq. ft
Counted as living area: Yes

Heated: Yes
Finished: Yes
Enclosed: Yes
Contiguous: Yes
Permitted: Yes
Wet space: No
Addition: No
Conversion: No

15512 Match Rail Pl, Chesterfield, VA, US

15 Floor 2 - W.I.C.



Dimensions: 6'8" x 7'7"
Area: 51 sq. ft
Counted as living area: Yes

Heated: Yes
Finished: Yes
Enclosed: Yes
Contiguous: Yes
Permitted: Yes
Wet space: No
Addition: No
Conversion: No

16 Floor 2 - W.I.C.



Dimensions: 6'7" x 8'1"
Area: 45 sq. ft
Counted as living area: Yes

Heated: Yes
Finished: Yes
Enclosed: Yes
Contiguous: Yes
Permitted: Yes
Wet space: No
Addition: No
Conversion: No

17 Floor 2 - Bath



Dimensions: 5'8" x 5'5"
Area: 25 sq. ft
Counted as living area: Yes

Heated: Yes
Finished: Yes
Enclosed: Yes
Contiguous: Yes
Permitted: Yes
Wet space: Yes
Addition: No
Conversion: No

15512 Match Rail Pl, Chesterfield, VA, US

18 Floor 2 - Laundry



Dimensions: 7'11" x 8'1"
Area: 52 sq. ft
Counted as living area: Yes

Heated: Yes
Finished: Yes
Enclosed: Yes
Contiguous: Yes
Permitted: Yes
Wet space: No
Addition: No
Conversion: No

19 Floor 2 - Hall



Dimensions: 8'7" x 7'0"
Area: 126 sq. ft
Counted as living area: Yes

Heated: Yes
Finished: Yes
Enclosed: Yes
Contiguous: Yes
Permitted: Yes
Wet space: No
Addition: No
Conversion: No

20 Floor 2 - Bath



Dimensions: 5'8" x 10'2"
Area: 57 sq. ft
Counted as living area: Yes

Heated: Yes
Finished: Yes
Enclosed: Yes
Contiguous: Yes
Permitted: Yes
Wet space: Yes
Addition: No
Conversion: No

15512 Match Rail Pl, Chesterfield, VA, US**21 Floor 2 - Bath**

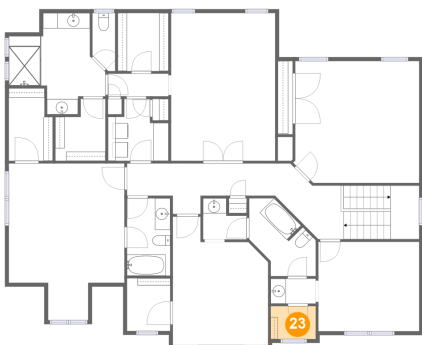
Dimensions: 8'6" x 10'2"
Area: 63 sq. ft
Counted as living area: Yes

Heated: Yes
Finished: Yes
Enclosed: Yes
Contiguous: Yes
Permitted: Yes
Wet space: Yes
Addition: No
Conversion: No

22 Floor 2 - Bedroom

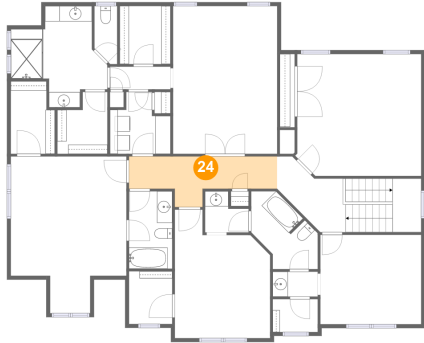
Dimensions: 16'6" x 16'0"
Area: 257 sq. ft
Counted as living area: Yes

Heated: Yes
Finished: Yes
Enclosed: Yes
Contiguous: Yes
Permitted: Yes
Wet space: No
Addition: No
Conversion: No

23 Floor 2 - W.I.C.

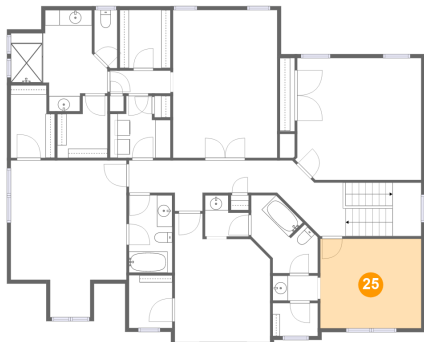
Dimensions: 5'11" x 4'4"
Area: 25 sq. ft
Counted as living area: Yes

Heated: Yes
Finished: Yes
Enclosed: Yes
Contiguous: Yes
Permitted: Yes
Wet space: No
Addition: No
Conversion: No

15512 Match Rail Pl, Chesterfield, VA, US**24 Floor 2 - Hall**

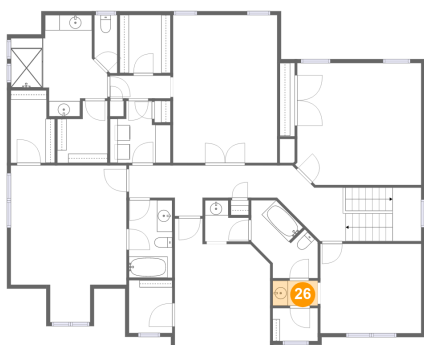
Dimensions: 19'5" x 6'8"
Area: 91 sq. ft
Counted as living area: Yes

Heated: Yes
Finished: Yes
Enclosed: Yes
Contiguous: Yes
Permitted: Yes
Wet space: No
Addition: No
Conversion: No

25 Floor 2 - Bedroom

Dimensions: 13'3" x 11'9"
Area: 155 sq. ft
Counted as living area: Yes

Heated: Yes
Finished: Yes
Enclosed: Yes
Contiguous: Yes
Permitted: Yes
Wet space: No
Addition: No
Conversion: No

26 Floor 2 - Bath

Dimensions: 5'11" x 3'3"
Area: 19 sq. ft
Counted as living area: Yes

Heated: Yes
Finished: Yes
Enclosed: Yes
Contiguous: Yes
Permitted: Yes
Wet space: Yes
Addition: No
Conversion: No

15512 Match Rail Pl, Chesterfield, VA, US

27 Floor 2 - Hall



Dimensions: 7'11" x 3'0"
Area: 24 sq. ft
Counted as living area: Yes

Heated: Yes
Finished: Yes
Enclosed: Yes
Contiguous: Yes
Permitted: Yes
Wet space: No
Addition: No
Conversion: No

28 Floor 2 - Bath



Dimensions: 12'8" x 13'3"
Area: 113 sq. ft
Counted as living area: Yes

Heated: Yes
Finished: Yes
Enclosed: Yes
Contiguous: Yes
Permitted: Yes
Wet space: Yes
Addition: No
Conversion: No

29 Floor 2 - WC

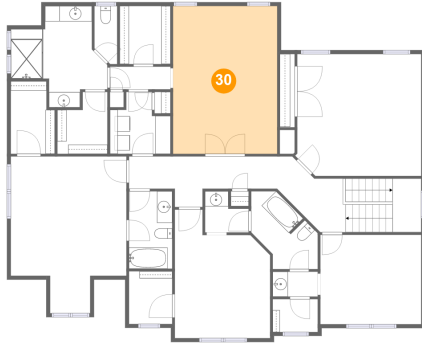


Dimensions: 3'0" x 7'7"
Area: 21 sq. ft
Counted as living area: Yes

Heated: Yes
Finished: Yes
Enclosed: Yes
Contiguous: Yes
Permitted: Yes
Wet space: Yes
Addition: No
Conversion: No

15512 Match Rail Pl, Chesterfield, VA, US

30 Floor 2 - Primary Bedroom



Dimensions: 13'8" x 19'4"
Area: 264 sq. ft
Counted as living area: Yes

Heated: Yes
Finished: Yes
Enclosed: Yes
Contiguous: Yes
Permitted: Yes
Wet space: No
Addition: No
Conversion: No

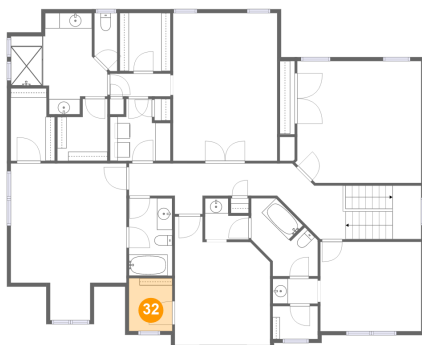
31 Floor 2 - Bedroom



Dimensions: 15'2" x 20'6"
Area: 248 sq. ft
Counted as living area: Yes

Heated: Yes
Finished: Yes
Enclosed: Yes
Contiguous: Yes
Permitted: Yes
Wet space: No
Addition: No
Conversion: No

32 Floor 2 - W.I.C.



Dimensions: 5'8" x 6'11"
Area: 39 sq. ft
Counted as living area: Yes

Heated: Yes
Finished: Yes
Enclosed: Yes
Contiguous: Yes
Permitted: Yes
Wet space: No
Addition: No
Conversion: No

15512 Match Rail Pl, Chesterfield, VA, US

33 Floor 2 - Bedroom



Dimensions: 12'6" x 16'10"
Area: 177 sq. ft
Counted as living area: Yes

Heated: Yes
Finished: Yes
Enclosed: Yes
Contiguous: Yes
Permitted: Yes
Wet space: No
Addition: No
Conversion: No

34 Floor 2 - W.I.C.



Dimensions: 5'9" x 9'6"
Area: 51 sq. ft
Counted as living area: Yes

Heated: Yes
Finished: Yes
Enclosed: Yes
Contiguous: Yes
Permitted: Yes
Wet space: No
Addition: No
Conversion: No