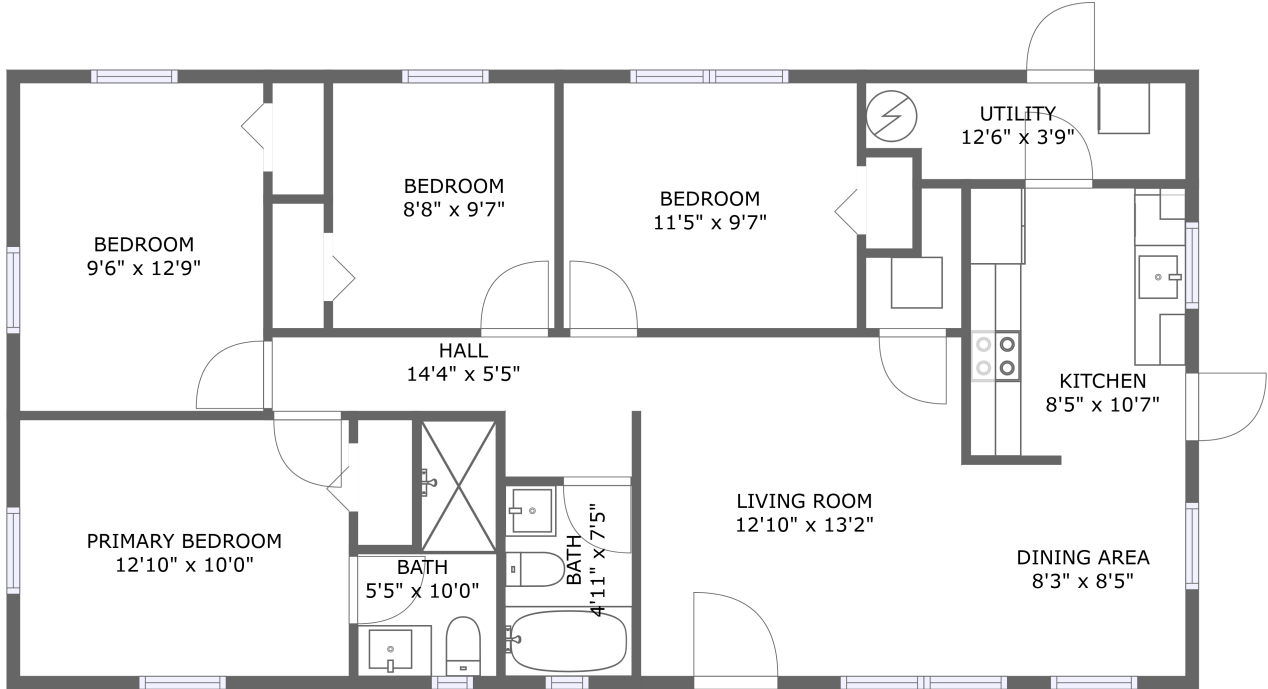


2124 West Elm Street, Riverbend, Tampa, Hillsborough County, Florida, United States,




FLOOR 1

Property Summary


 **0** garages

 **4** bedrooms

 **2** bathrooms

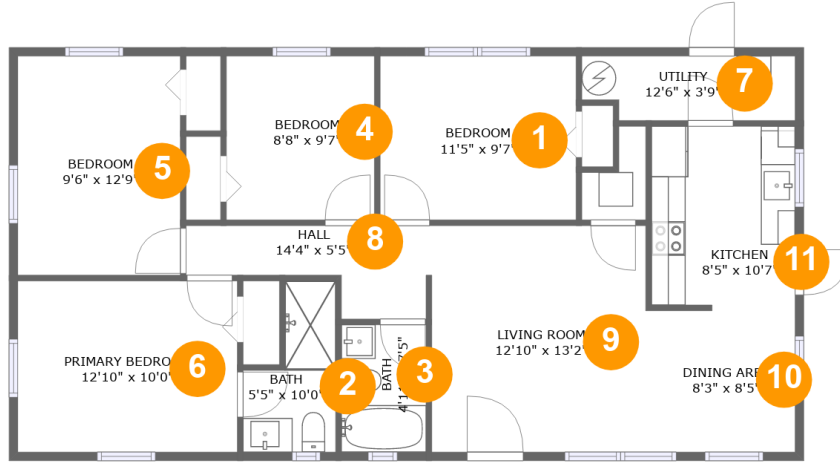
 **0** half baths

 **1** floors

 **1,119** Gross Living Area sqft

 **1,119** total sqft

2124 West Elm Street, Riverbend, Tampa, Hillsborough County, Florida, United States,



Room Dimensions

Floor 1

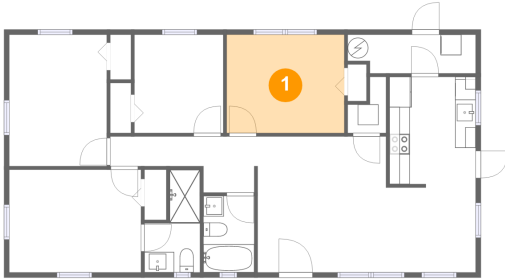
Total sqft: 1119

Living area: 1119

#	Room name	Dimensions	Area (sqft)	Counted as Living Area
1	Bedroom	11'5" x 9'7"	109 sq. ft	Yes
2	Bath	5'5" x 10'0"	41 sq. ft	Yes
3	Bath	4'11" x 7'5"	37 sq. ft	Yes
4	Bedroom	8'8" x 9'7"	83 sq. ft	Yes
5	Bedroom	9'6" x 12'9"	121 sq. ft	Yes
6	Primary Bedroom	12'10" x 10'0"	128 sq. ft	Yes
7	Utility	12'6" x 3'9"	44 sq. ft	Yes
8	Hall	14'4" x 5'5"	54 sq. ft	Yes
9	Living Room	12'10" x 13'2"	169 sq. ft	Yes
10	Dining Area	8'3" x 8'5"	69 sq. ft	Yes
11	Kitchen	8'5" x 10'7"	88 sq. ft	Yes

2124 West Elm Street, Riverbend, Tampa, Hillsborough County, Florida, United States,

1 Floor 1 - Bedroom



Dimensions: 11'5" x 9'7"
Area: 109 sq. ft
Counted as Living Area:
Yes

Heated: Yes
Finished: Yes
Enclosed: Yes
Contiguous:
Yes
Permitted: Yes
Wet Space: No
Addition: No
Conversion: No

2 Floor 1 - Bath

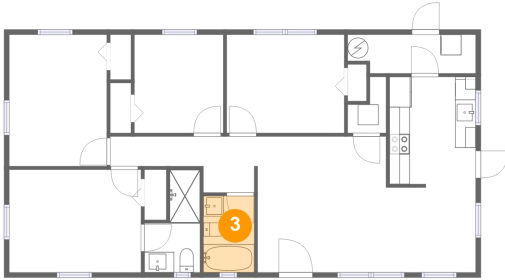


Dimensions: 5'5" x 10'0"
Area: 41 sq. ft
Counted as Living Area:
Yes

Heated: Yes
Finished: Yes
Enclosed: Yes
Contiguous:
Yes
Permitted: Yes
Wet Space: Yes
Addition: No
Conversion: No

2124 West Elm Street, Riverbend, Tampa, Hillsborough County, Florida, United States,

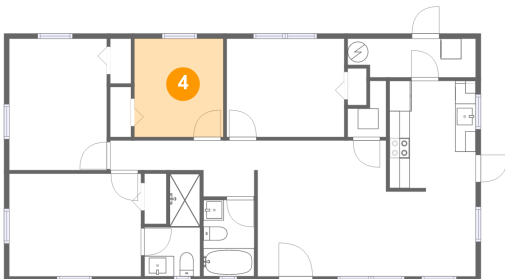
3 Floor 1 - Bath



Dimensions: 4'11" x 7'5"
Area: 37 sq. ft
Counted as Living Area:
Yes

Heated: Yes
Finished: Yes
Enclosed: Yes
Contiguous:
Yes
Permitted: Yes
Wet Space: Yes
Addition: No
Conversion: No

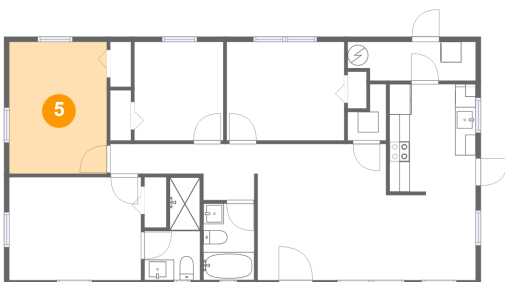
4 Floor 1 - Bedroom



Dimensions: 8'8" x 9'7"
Area: 83 sq. ft
Counted as Living Area:
Yes

Heated: Yes
Finished: Yes
Enclosed: Yes
Contiguous:
Yes
Permitted: Yes
Wet Space: No
Addition: No
Conversion: No

5 Floor 1 - Bedroom



Dimensions: 9'6" x 12'9"
Area: 121 sq. ft
Counted as Living Area:
Yes

Heated: Yes
Finished: Yes
Enclosed: Yes
Contiguous:
Yes
Permitted: Yes
Wet Space: No
Addition: No
Conversion: No

2124 West Elm Street, Riverbend, Tampa, Hillsborough County, Florida, United States,

6 Floor 1 - Primary Bedroom



Dimensions: 12'10" x 10'0"
Area: 128 sq. ft
Counted as Living Area:
Yes

Heated: Yes
Finished: Yes
Enclosed: Yes
Contiguous:
Yes
Permitted: Yes
Wet Space: No
Addition: No
Conversion: No

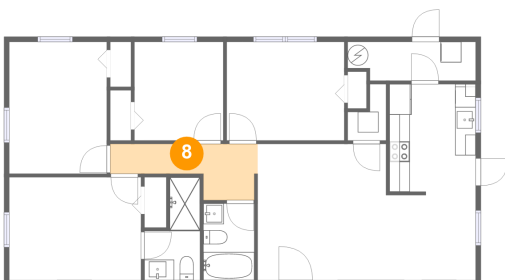
7 Floor 1 - Utility



Dimensions: 12'6" x 3'9"
Area: 44 sq. ft
Counted as Living Area:
Yes

Heated: Yes
Finished: Yes
Enclosed: Yes
Contiguous:
Yes
Permitted: Yes
Wet Space: No
Addition: No
Conversion: No

8 Floor 1 - Hall



Dimensions: 14'4" x 5'5"
Area: 54 sq. ft
Counted as Living Area:
Yes

Heated: Yes
Finished: Yes
Enclosed: Yes
Contiguous:
Yes
Permitted: Yes
Wet Space: No
Addition: No
Conversion: No

2124 West Elm Street, Riverbend, Tampa, Hillsborough County, Florida, United States,

9 Floor 1 - Living Room



Dimensions: 12'10" x 13'2"
Area: 169 sq. ft
Counted as Living Area:
Yes

Heated: Yes
Finished: Yes
Enclosed: Yes
Contiguous:
Yes
Permitted: Yes
Wet Space: No
Addition: No
Conversion: No

10 Floor 1 - Dining Area



Dimensions: 8'3" x 8'5"
Area: 69 sq. ft
Counted as Living Area:
Yes

Heated: Yes
Finished: Yes
Enclosed: Yes
Contiguous:
Yes
Permitted: Yes
Wet Space: No
Addition: No
Conversion: No

11 Floor 1 - Kitchen



Dimensions: 8'5" x 10'7"
Area: 88 sq. ft
Counted as Living Area:
Yes

Heated: Yes
Finished: Yes
Enclosed: Yes
Contiguous:
Yes
Permitted: Yes
Wet Space: No
Addition: No
Conversion: No