

Home report

409 Stone Road, Rose Township, Brookville, Jefferson County,
Pennsylvania, United States, 15825




Total Area: 2038 sq. ft

Floor 1: 595 sq. ft, Floor 2: 1443 sq. ft

Excluded: Garage 505 sq. ft, Porch 42 sq. ft, Deck 265 sq. ft, Patio 485 sq. ft,
Embeddedwindow 11 sq. ft, Walls: 177 sq. ft

Property summary

 2 Floors

 3 Bedrooms

 2 Bathrooms

Home report

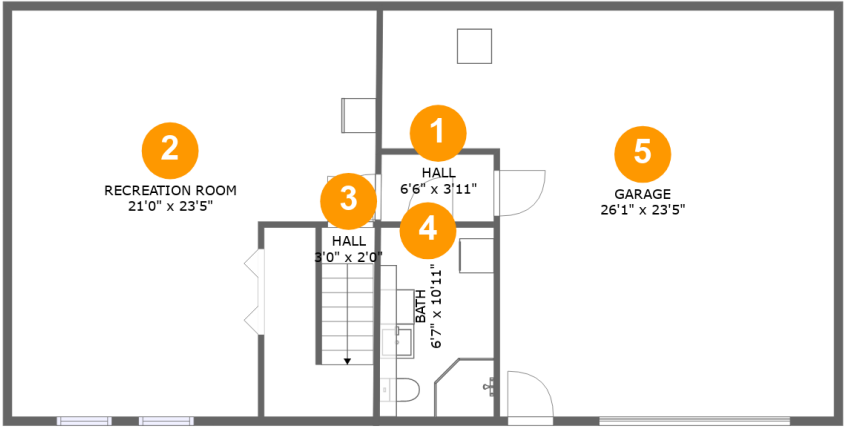
409 Stone Road, Rose Township, Brookville, Jefferson County,
Pennsylvania, United States, 15825

 **1**
Half baths

 **1**
Garages

Home report

409 Stone Road, Rose Township, Brookville, Jefferson County,
Pennsylvania, United States, 15825



Room dimensions

Floor 1 Total:595sqft Excluded: 505sqft

#		Max Dimensions	sqft	Included
1	Hall	6'6" x 3'11"	25 sq. ft	Yes
2	Recreation Room	21'0" x 23'5"	415 sq. ft	Yes
3	Hall	3'0" x 2'0"	67 sq. ft	Yes
4	Bath	6'7" x 10'11"	72 sq. ft	Yes
5	Garage	26'1" x 23'5"	505 sq. ft	No

Home report

409 Stone Road, Rose Township, Brookville, Jefferson County,
Pennsylvania, United States, 15825



Room dimensions

Floor 2

Total:1443sqft Excluded: 803sqft

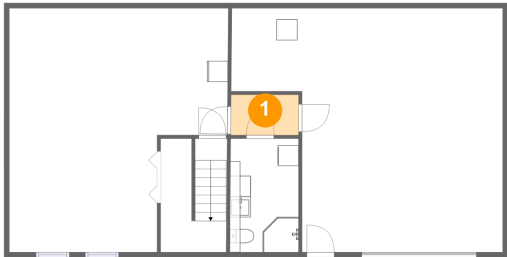
#		Max Dimensions	sqft	Included
6	Kitchen	14'7" x 12'7"	167 sq. ft	Yes
7	Deck	5'7" x 14'4"	79 sq. ft	No
8	Deck	9'3" x 20'2"	186 sq. ft	No
9	Breakfast Nook	11'3" x 12'7"	129 sq. ft	Yes
10	Primary Bedroom	11'11" x 12'7"	150 sq. ft	Yes
11	Foyer	6'4" x 3'0"	20 sq. ft	Yes
12	Patio	23'4" x 25'4"	485 sq. ft	No
13	Bedroom	13'3" x 12'1"	140 sq. ft	Yes
14	WC	2'8" x 7'2"	19 sq. ft	Yes
15	Bedroom	10'6" x 12'1"	121 sq. ft	Yes
16	Hall	11'4" x 3'5"	39 sq. ft	Yes

Home report

**409 Stone Road, Rose Township, Brookville, Jefferson County,
Pennsylvania, United States, 15825**

#		Max Dimensions	sqft	Included
17	Living Room	13'10" x 18'10"	260 sq. ft	Yes
18	Dining Area	17'7" x 12'1"	211 sq. ft	Yes
19	Bath	8'0" x 8'10"	59 sq. ft	Yes
20	Hall	3'5" x 3'4"	11 sq. ft	Yes
21	Porch	6'0" x 7'2"	42 sq. ft	No

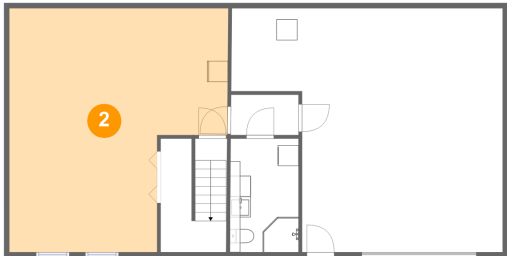
1 Floor 1 - Hall



Max Dimensions: 6'6" x 3'11"
Calculated Area: 25 sq. ft
Included: Yes

Heated: Yes
Finished: Yes
Enclosed: Yes
Contiguous: Yes
Permitted: Yes
Wet space: No
Addition: No
Conversion: No

2 Floor 1 - Recreation Room

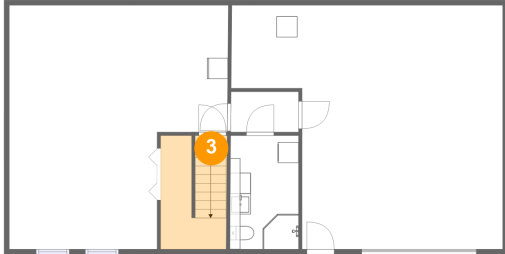


Max Dimensions: 21'0" x 23'5"
Calculated Area: 415 sq. ft
Included: Yes

Heated: Yes
Finished: Yes
Enclosed: Yes
Contiguous: Yes
Permitted: Yes
Wet space: No
Addition: No
Conversion: No

409 Stone Road, Rose Township, Brookville, Jefferson County,
Pennsylvania, United States, 15825

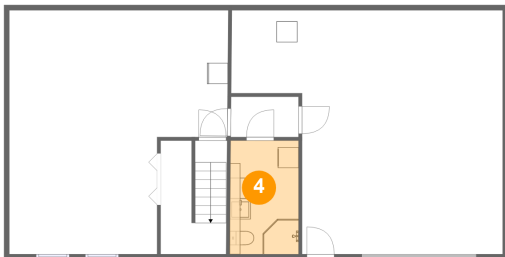
3 Floor 1 - Hall



Max Dimensions: 3'0" x 2'0"
Calculated Area: 67 sq. ft
Included: Yes

Heated: Yes
Finished: Yes
Enclosed: Yes
Contiguous: Yes
Permitted: Yes
Wet space: No
Addition: No
Conversion: No

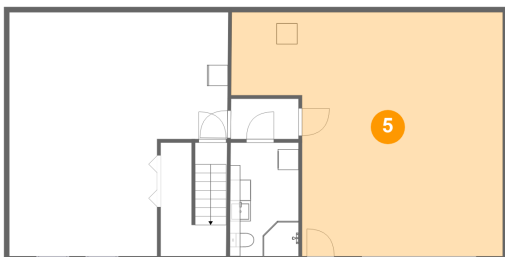
4 Floor 1 - Bath



Max Dimensions: 6'7" x
10'11"
Calculated Area: 72 sq. ft
Included: Yes

Heated: Yes
Finished: Yes
Enclosed: Yes
Contiguous:
Yes
Permitted: Yes
Wet space: Yes
Addition: No
Conversion: No

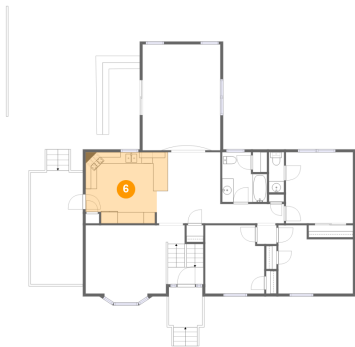
5 Floor 1 - Garage



Max Dimensions: 26'1" x
23'5"
Calculated Area: 505 sq. ft
Included: No

Heated: No
Finished: No
Enclosed: Yes
Contiguous:
Yes
Permitted: Yes
Wet space: No
Addition: No
Conversion: No

6 Floor 2 - Kitchen



Max Dimensions: 14'7" x 12'7"
Calculated Area: 167 sq. ft
Included: Yes

Heated: Yes
Finished: Yes
Enclosed: Yes
Contiguous: Yes
Permitted: Yes
Wet space: No
Addition: No
Conversion: No

7 Floor 2 - Deck



Max Dimensions: 5'7" x 14'4"
Calculated Area: 79 sq. ft
Included: No

Heated: No
Finished: Yes
Enclosed: No
Contiguous: Yes
Permitted: Yes
Wet space: No
Addition: No
Conversion: No

8 Floor 2 - Deck

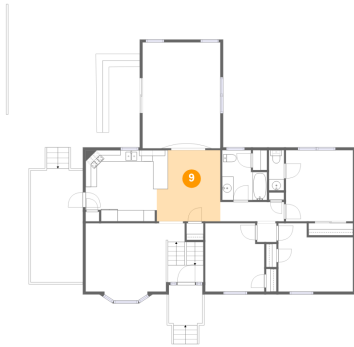


Max Dimensions: 9'3" x 20'2"
Calculated Area: 186 sq. ft
Included: No

Heated: No
Finished: Yes
Enclosed: No
Contiguous: Yes
Permitted: Yes
Wet space: No
Addition: No
Conversion: No

409 Stone Road, Rose Township, Brookville, Jefferson County,
Pennsylvania, United States, 15825

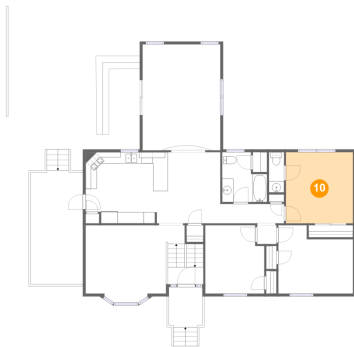
9 Floor 2 - Breakfast Nook



Max Dimensions: 11'3" x 12'7"
Calculated Area: 129 sq. ft
Included: Yes

Heated: Yes
Finished: Yes
Enclosed: Yes
Contiguous: Yes
Permitted: Yes
Wet space: No
Addition: No
Conversion: No

10 Floor 2 - Primary Bedroom



Max Dimensions: 11'11" x 12'7"
Calculated Area: 150 sq. ft
Included: Yes

Heated: Yes
Finished: Yes
Enclosed: Yes
Contiguous: Yes
Permitted: Yes
Wet space: No
Addition: No
Conversion: No

11 Floor 2 - Foyer

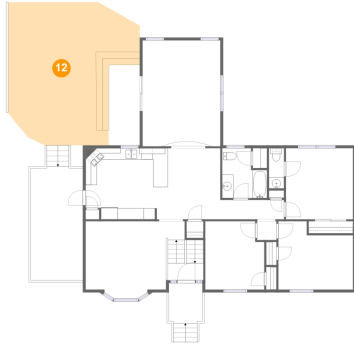


Max Dimensions: 6'4" x 3'0"
Calculated Area: 20 sq. ft
Included: Yes

Heated: Yes
Finished: Yes
Enclosed: Yes
Contiguous: Yes
Permitted: Yes
Wet space: No
Addition: No
Conversion: No

409 Stone Road, Rose Township, Brookville, Jefferson County,
Pennsylvania, United States, 15825

12 Floor 2 - Patio



Max Dimensions: 23'4" x 25'4"
Calculated Area: 485 sq. ft
Included: No

Heated: No
Finished: Yes
Enclosed: No
Contiguous: Yes
Permitted: Yes
Wet space: No
Addition: No
Conversion: No

13 Floor 2 - Bedroom



Max Dimensions: 13'3" x 12'1"
Calculated Area: 140 sq. ft
Included: Yes

Heated: Yes
Finished: Yes
Enclosed: Yes
Contiguous: Yes
Permitted: Yes
Wet space: No
Addition: No
Conversion: No

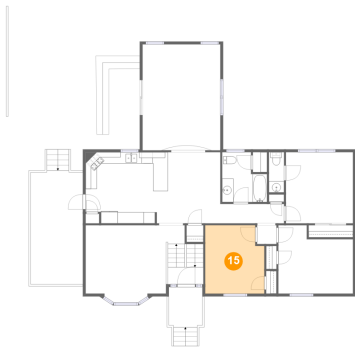
14 Floor 2 - WC



Max Dimensions: 2'8" x 7'2"
Calculated Area: 19 sq. ft
Included: Yes

Heated: Yes
Finished: Yes
Enclosed: Yes
Contiguous: Yes
Permitted: Yes
Wet space: Yes
Addition: No
Conversion: No

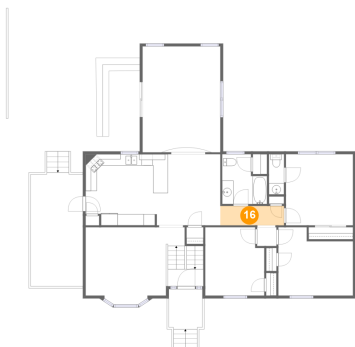
15 Floor 2 - Bedroom



Max Dimensions: 10'6" x 12'1"
Calculated Area: 121 sq. ft
Included: Yes

Heated: Yes
Finished: Yes
Enclosed: Yes
Contiguous: Yes
Permitted: Yes
Wet space: No
Addition: No
Conversion: No

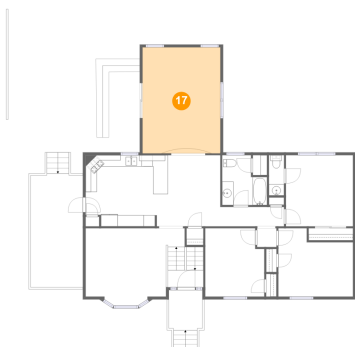
16 Floor 2 - Hall



Max Dimensions: 11'4" x 3'5"
Calculated Area: 39 sq. ft
Included: Yes

Heated: Yes
Finished: Yes
Enclosed: Yes
Contiguous: Yes
Permitted: Yes
Wet space: No
Addition: No
Conversion: No

17 Floor 2 - Living Room

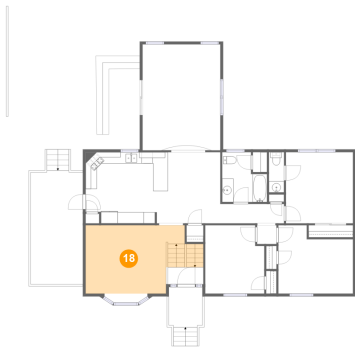


Max Dimensions: 13'10" x 18'10"
Calculated Area: 260 sq. ft
Included: Yes

Heated: Yes
Finished: Yes
Enclosed: Yes
Contiguous: Yes
Permitted: Yes
Wet space: No
Addition: No
Conversion: No

409 Stone Road, Rose Township, Brookville, Jefferson County,
Pennsylvania, United States, 15825

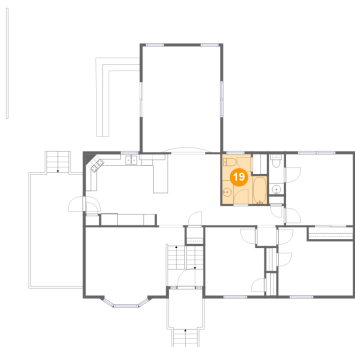
18 Floor 2 - Dining Area



Max Dimensions: 17'7" x 12'1"
Calculated Area: 211 sq. ft
Included: Yes

Heated: Yes
Finished: Yes
Enclosed: Yes
Contiguous: Yes
Permitted: Yes
Wet space: No
Addition: No
Conversion: No

19 Floor 2 - Bath



Max Dimensions: 8'0" x 8'10"
Calculated Area: 59 sq. ft
Included: Yes

Heated: Yes
Finished: Yes
Enclosed: Yes
Contiguous: Yes
Permitted: Yes
Wet space: Yes
Addition: No
Conversion: No

20 Floor 2 - Hall



Max Dimensions: 3'5" x 3'4"
Calculated Area: 11 sq. ft
Included: Yes

Heated: Yes
Finished: Yes
Enclosed: Yes
Contiguous: Yes
Permitted: Yes
Wet space: No
Addition: No
Conversion: No

409 Stone Road, Rose Township, Brookville, Jefferson County,
Pennsylvania, United States, 15825

21 Floor 2 - Porch



Max Dimensions: 6'0" x 7'2"
Calculated Area: 42 sq. ft
Included: No

Heated: No
Finished: Yes
Enclosed: No
Contiguous: Yes
Permitted: Yes
Wet space: No
Addition: No
Conversion: No