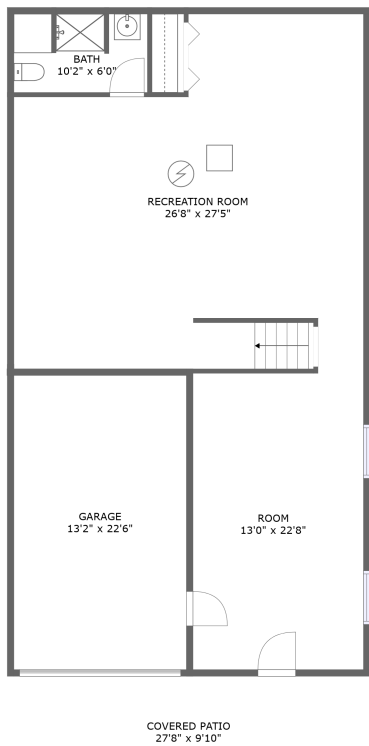
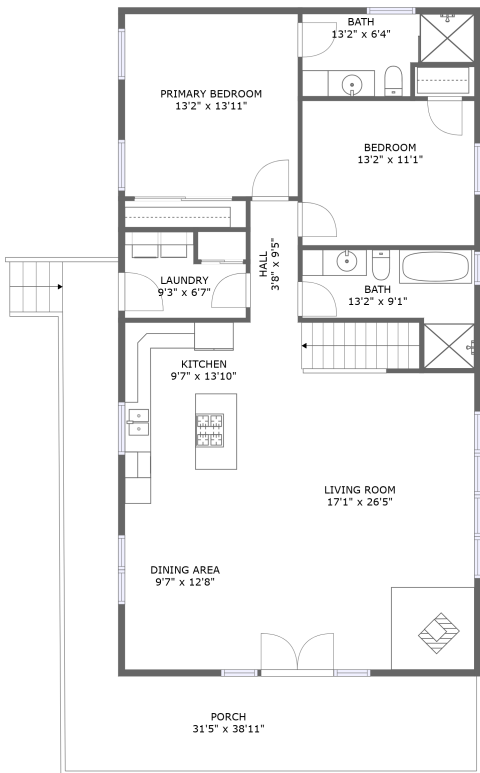


Home report

7191 Loleta Road, Millstone Township, Sigel, Elk County,  
Pennsylvania, United States, 15860





FLOOR 1





FLOOR 2


Property summary


 **1** Garages


 **2** Bedrooms

 **3** Bathrooms

 **0** Half baths

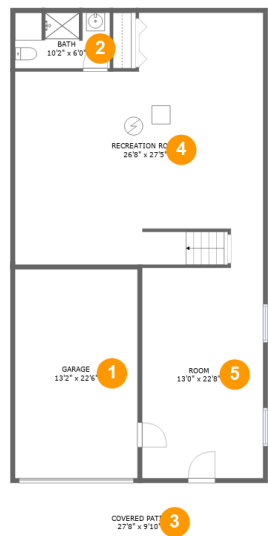
 **2** Floors

 **1,415** Gross living area sqft

 **3,477** Total sqft

Home report

7191 Loleta Road, Millstone Township, Sigel, Elk County,  
Pennsylvania, United States, 15860



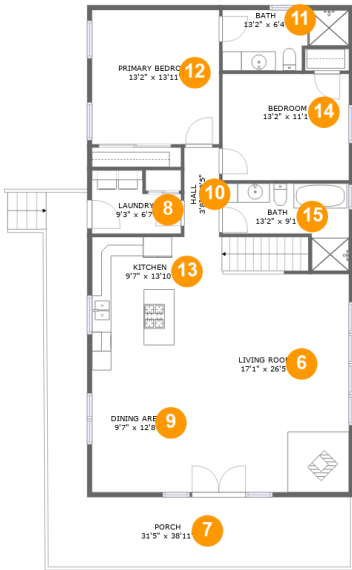
Room dimensions

Floor 1 Total sqft: 1686    Living area: 0

#		Dimensions	sqft	Counted as living area
1	Garage	13'2" x 22'6"	296 sq. ft	No
2	Bath	10'2" x 6'0"	59 sq. ft	No
3	Covered Patio	27'8" x 9'10"	272 sq. ft	No
4	Recreation Room	26'8" x 27'5"	637 sq. ft	No
5	Room	13'0" x 22'8"	295 sq. ft	No

Home report

7191 Loleta Road, Millstone Township, Sigel, Elk County,  
Pennsylvania, United States, 15860



Room dimensions

Floor 2 Total sqft: 1791    Living area: 1415

#		Dimensions	sqft	Counted as living area
6	Living Room	17'1" x 26'5"	436 sq. ft	Yes
7	Porch	31'5" x 38'11"	376 sq. ft	No
8	Laundry	9'3" x 6'7"	51 sq. ft	Yes
9	Dining Area	9'7" x 12'8"	122 sq. ft	Yes
10	Hall	3'8" x 9'5"	35 sq. ft	Yes
11	Bath	13'2" x 6'4"	70 sq. ft	Yes
12	Primary Bedroom	13'2" x 13'11"	184 sq. ft	Yes
13	Kitchen	9'7" x 13'10"	133 sq. ft	Yes
14	Bedroom	13'2" x 11'1"	145 sq. ft	Yes
15	Bath	13'2" x 9'1"	83 sq. ft	Yes

7191 Loleta Road, Millstone Township, Sigel, Elk County,  
Pennsylvania, United States, 15860

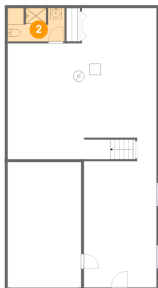
1 Floor 1 - Garage



Dimensions: 13'2" x 22'6"  
Area: 296 sq. ft  
Counted as living area: No

Heated: No  
Finished: No  
Enclosed: Yes  
Contiguous: Yes  
Permitted: Yes  
Wet space: No  
Addition: No  
Conversion: No

2 Floor 1 - Bath

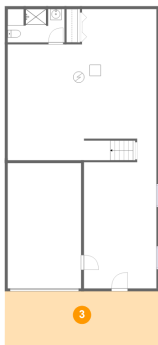


Dimensions: 10'2" x 6'0"  
Area: 59 sq. ft  
Counted as living area: No

Heated: Yes  
Finished: Yes  
Enclosed: Yes  
Contiguous: No  
Permitted: Yes  
Wet space: Yes  
Addition: No  
Conversion: No

7191 Loleta Road, Millstone Township, Sigel, Elk County,  
Pennsylvania, United States, 15860

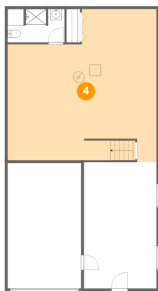
3 Floor 1 - Covered Patio



Dimensions: 27'8" x 9'10"  
Area: 272 sq. ft  
Counted as living area: No

Heated: No  
Finished: Yes  
Enclosed: No  
Contiguous: Yes  
Permitted: Yes  
Wet space: No  
Addition: No  
Conversion: No

4 Floor 1 - Recreation Room



Dimensions: 26'8" x 27'5"  
Area: 637 sq. ft  
Counted as living area: No

Heated: Yes  
Finished: No  
Enclosed: Yes  
Contiguous: Yes  
Permitted: Yes  
Wet space: No  
Addition: No  
Conversion: No

5 Floor 1 - Room

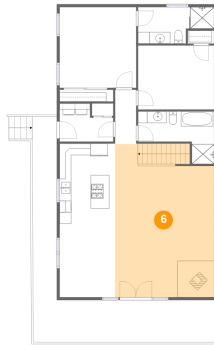


Dimensions: 13'0" x 22'8"  
Area: 295 sq. ft  
Counted as living area: No

Heated: Yes  
Finished: No  
Enclosed: Yes  
Contiguous: Yes  
Permitted: Yes  
Wet space: No  
Addition: No  
Conversion: No

7191 Loleta Road, Millstone Township, Sigel, Elk County,  
Pennsylvania, United States, 15860

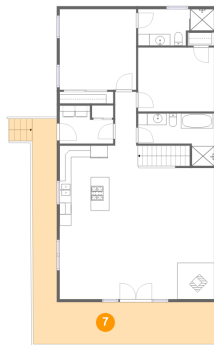
## 6 Floor 2 - Living Room



Dimensions: 17'1" x 26'5"  
Area: 436 sq. ft  
Counted as living area: Yes

Heated: Yes  
Finished: Yes  
Enclosed: Yes  
Contiguous: Yes  
Permitted: Yes  
Wet space: No  
Addition: No  
Conversion: No

## 7 Floor 2 - Porch



Dimensions: 31'5" x 38'11"  
Area: 376 sq. ft  
Counted as living area: No

Heated: No  
Finished: Yes  
Enclosed: No  
Contiguous: Yes  
Permitted: Yes  
Wet space: No  
Addition: No  
Conversion: No

## 8 Floor 2 - Laundry



Dimensions: 9'3" x 6'7"  
Area: 51 sq. ft  
Counted as living area: Yes

Heated: Yes  
Finished: Yes  
Enclosed: Yes  
Contiguous: Yes  
Permitted: Yes  
Wet space: No  
Addition: No  
Conversion: No

9 Floor 2 - Dining Area



Dimensions: 9'7" x 12'8"  
Area: 122 sq. ft  
Counted as living area: Yes

Heated: Yes  
Finished: Yes  
Enclosed: Yes  
Contiguous: Yes  
Permitted: Yes  
Wet space: No  
Addition: No  
Conversion: No

10 Floor 2 - Hall



Dimensions: 3'8" x 9'5"  
Area: 35 sq. ft  
Counted as living area: Yes

Heated: Yes  
Finished: Yes  
Enclosed: Yes  
Contiguous: Yes  
Permitted: Yes  
Wet space: No  
Addition: No  
Conversion: No

11 Floor 2 - Bath



Dimensions: 13'2" x 6'4"  
Area: 70 sq. ft  
Counted as living area: Yes

Heated: Yes  
Finished: Yes  
Enclosed: Yes  
Contiguous: Yes  
Permitted: Yes  
Wet space: Yes  
Addition: No  
Conversion: No

7191 Loleta Road, Millstone Township, Sigel, Elk County,  
Pennsylvania, United States, 15860

12 Floor 2 - Primary Bedroom



Dimensions: 13'2" x 13'11"  
Area: 184 sq. ft  
Counted as living area: Yes

Heated: Yes  
Finished: Yes  
Enclosed: Yes  
Contiguous: Yes  
Permitted: Yes  
Wet space: No  
Addition: No  
Conversion: No

13 Floor 2 - Kitchen



Dimensions: 9'7" x 13'10"  
Area: 133 sq. ft  
Counted as living area: Yes

Heated: Yes  
Finished: Yes  
Enclosed: Yes  
Contiguous: Yes  
Permitted: Yes  
Wet space: No  
Addition: No  
Conversion: No

14 Floor 2 - Bedroom



Dimensions: 13'2" x 11'1"  
Area: 145 sq. ft  
Counted as living area: Yes

Heated: Yes  
Finished: Yes  
Enclosed: Yes  
Contiguous: Yes  
Permitted: Yes  
Wet space: No  
Addition: No  
Conversion: No



7191 Loleta Road, Millstone Township, Sigel, Elk County,  
Pennsylvania, United States, 15860

15 Floor 2 - Bath



Dimensions: 13'2" x 9'1"  
Area: 83 sq. ft  
Counted as living area: Yes

Heated: Yes  
Finished: Yes  
Enclosed: Yes  
Contiguous: Yes  
Permitted: Yes  
Wet space: Yes  
Addition: No  
Conversion: No