


# Home report

**630 Kruk Street, Lemont, Cook County, Illinois, United States, 60439**



## Property summary


 **1** Garages

 **4** Bedrooms

 **3** Bathrooms

 **0** Half baths

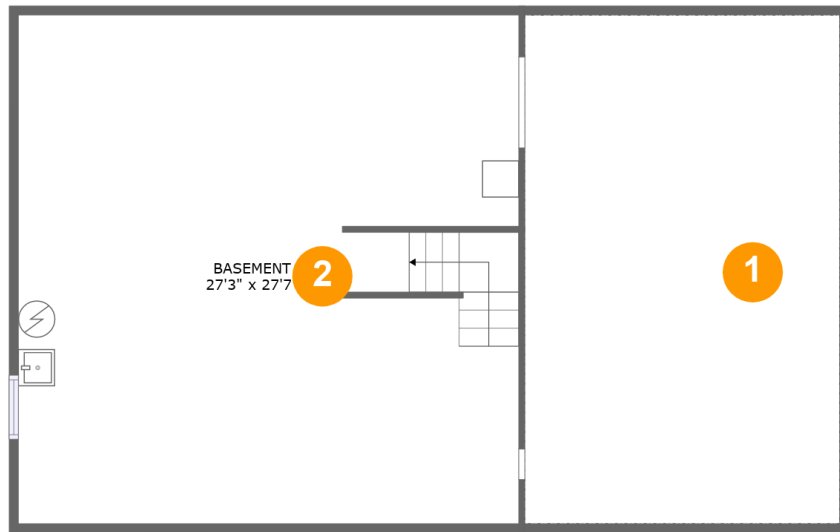
 **3** Floors

 **2,234** Gross living area sqft

 **4,520** Total sqft

Home report

630 Kruk Street, Lemont, Cook County, Illinois, United States, 60439



## Room dimensions

Floor 1

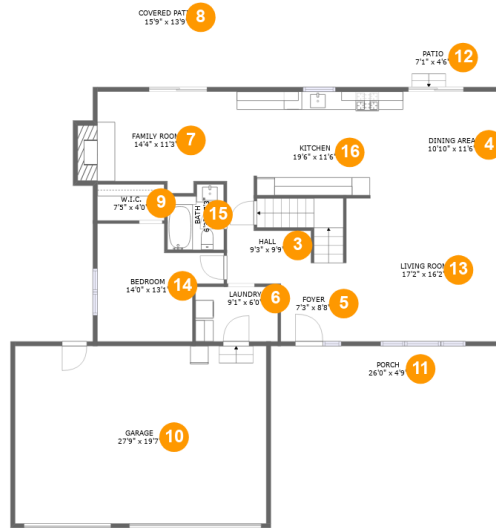
Total sqft: 1310

Living area: 0

#		Dimensions	sqft	Counted as living area
1	Crawl Space	17'2" x 27'8"	474 sq. ft	No
2	Basement	27'3" x 27'7"	761 sq. ft	No

Home report

# 630 Kruk Street, Lemont, Cook County, Illinois, United States, 60439



## Room dimensions

Floor 2

Total sqft: 2285 Living area: 1309

#		Dimensions	sqft	Counted as living area
3	Hall	9'3" x 9'9"	113 sq. ft	Yes
4	Dining Area	10'10" x 11'6"	125 sq. ft	Yes
5	Foyer	7'3" x 8'8"	63 sq. ft	Yes
6	Laundry	9'1" x 6'0"	55 sq. ft	Yes
7	Family Room	14'4" x 11'3"	160 sq. ft	Yes
8	Covered Patio	15'9" x 13'9"	219 sq. ft	No
9	W.I.C.	7'5" x 4'0"	30 sq. ft	Yes
10	Garage	27'9" x 19'7"	547 sq. ft	No
11	Porch	26'0" x 4'9"	124 sq. ft	No
12	Patio	7'1" x 4'6"	32 sq. ft	No
13	Living Room	17'2" x 16'2"	277 sq. ft	Yes

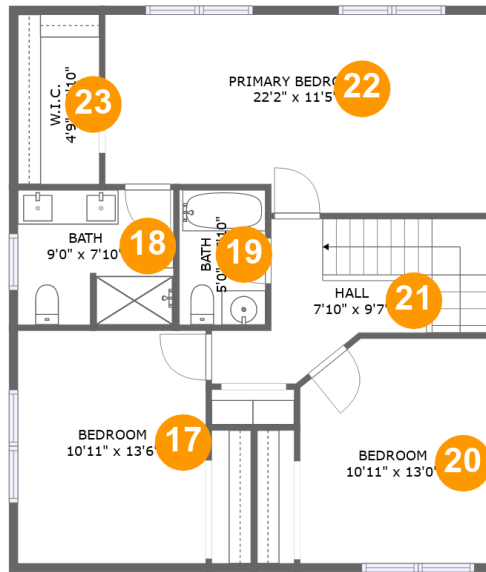
Home report

# 630 Kruk Street, Lemont, Cook County, Illinois, United States, 60439

#		Dimensions	sqft	Counted as living area
14	Bedroom	14'0" x 13'1"	139 sq. ft	Yes
15	Bath	6'3" x 7'3"	41 sq. ft	Yes
16	Kitchen	19'6" x 11'6"	224 sq. ft	Yes

Home report

630 Kruk Street, Lemont, Cook County, Illinois, United States, 60439



## Room dimensions

Floor 3

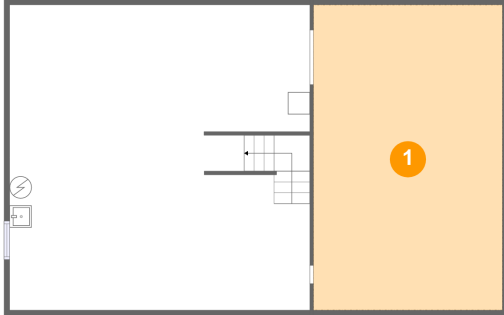
Total sqft: 925 Living area: 925

#		Dimensions	sqft	Counted as living area
17	Bedroom	10'11" x 13'6"	147 sq. ft	Yes
18	Bath	9'0" x 7'10"	69 sq. ft	Yes
19	Bath	5'0" x 7'10"	39 sq. ft	Yes
20	Bedroom	10'11" x 13'0"	137 sq. ft	Yes
21	Hall	7'10" x 9'7"	103 sq. ft	Yes
22	Primary Bedroom	22'2" x 11'5"	239 sq. ft	Yes
23	W.I.C.	4'9" x 9'10"	46 sq. ft	Yes

Home report

630 Kruk Street, Lemont, Cook County, Illinois, United States, 60439

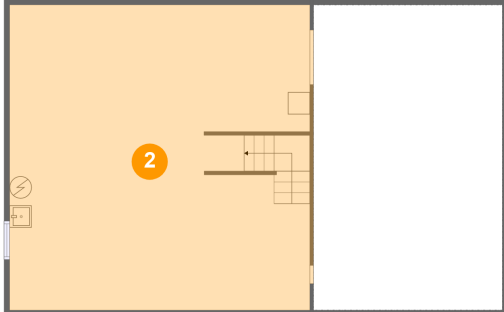
## 1 Floor 1 - Crawl Space



Dimensions: 17'2" x 27'8"  
 Area: 474 sq. ft  
 Counted as living area: No

Heated: No  
 Finished: No  
 Enclosed: No  
 Contiguous: Yes  
 Permitted: No  
 Wet space: No  
 Addition: No  
 Conversion: No

## 2 Floor 1 - Basement



Dimensions: 27'3" x 27'7"  
 Area: 761 sq. ft  
 Counted as living area: No

Heated: Yes  
 Finished: No  
 Enclosed: Yes  
 Contiguous: Yes  
 Permitted: Yes  
 Wet space: No  
 Addition: No  
 Conversion: No

**3 Floor 2 - Hall**



Dimensions: 9'3" x 9'9"  
 Area: 113 sq. ft  
 Counted as living area: Yes

Heated: Yes  
 Finished: Yes  
 Enclosed: Yes  
 Contiguous: Yes  
 Permitted: Yes  
 Wet space: No  
 Addition: No  
 Conversion: No

**4 Floor 2 - Dining Area**



Dimensions: 10'10" x 11'6"  
 Area: 125 sq. ft  
 Counted as living area: Yes

Heated: Yes  
 Finished: Yes  
 Enclosed: Yes  
 Contiguous: Yes  
 Permitted: Yes  
 Wet space: No  
 Addition: No  
 Conversion: No

**5 Floor 2 - Foyer**



Dimensions: 7'3" x 8'8"  
 Area: 63 sq. ft  
 Counted as living area: Yes

Heated: Yes  
 Finished: Yes  
 Enclosed: Yes  
 Contiguous: Yes  
 Permitted: Yes  
 Wet space: No  
 Addition: No  
 Conversion: No

**6 Floor 2 - Laundry**



Dimensions: 9'1" x 6'0"  
 Area: 55 sq. ft  
 Counted as living area: Yes

Heated: Yes  
 Finished: Yes  
 Enclosed: Yes  
 Contiguous: Yes  
 Permitted: Yes  
 Wet space: No  
 Addition: No  
 Conversion: No

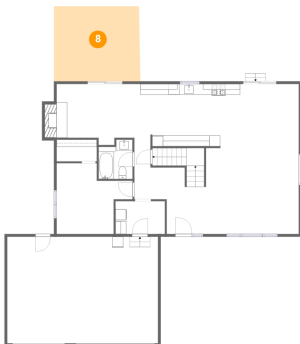
**7 Floor 2 - Family Room**



Dimensions: 14'4" x 11'3"  
 Area: 160 sq. ft  
 Counted as living area: Yes

Heated: Yes  
 Finished: Yes  
 Enclosed: Yes  
 Contiguous: Yes  
 Permitted: Yes  
 Wet space: No  
 Addition: No  
 Conversion: No

**8 Floor 2 - Covered Patio**



Dimensions: 15'9" x 13'9"  
 Area: 219 sq. ft  
 Counted as living area: No

Heated: No  
 Finished: Yes  
 Enclosed: No  
 Contiguous: Yes  
 Permitted: Yes  
 Wet space: No  
 Addition: No  
 Conversion: No



630 Kruk Street, Lemont, Cook County, Illinois, United States, 60439

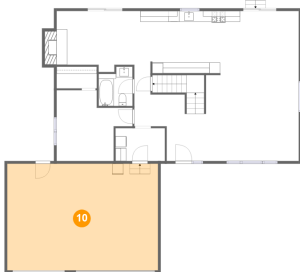
**9** Floor 2 - W.I.C.



Dimensions: 7'5" x 4'0"  
 Area: 30 sq. ft  
 Counted as living area: Yes

Heated: Yes  
 Finished: Yes  
 Enclosed: Yes  
 Contiguous: Yes  
 Permitted: Yes  
 Wet space: No  
 Addition: No  
 Conversion: No

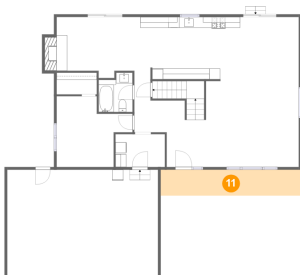
**10** Floor 2 - Garage



Dimensions: 27'9" x 19'7"  
 Area: 547 sq. ft  
 Counted as living area: No

Heated: No  
 Finished: No  
 Enclosed: Yes  
 Contiguous: Yes  
 Permitted: Yes  
 Wet space: No  
 Addition: No  
 Conversion: No

**11** Floor 2 - Porch



Dimensions: 26'0" x 4'9"  
 Area: 124 sq. ft  
 Counted as living area: No

Heated: No  
 Finished: Yes  
 Enclosed: No  
 Contiguous: Yes  
 Permitted: Yes  
 Wet space: No  
 Addition: No  
 Conversion: No

**12** Floor 2 - Patio



Dimensions: 7'1" x 4'6"  
 Area: 32 sq. ft  
 Counted as living area: No

Heated: No  
 Finished: Yes  
 Enclosed: No  
 Contiguous: Yes  
 Permitted: Yes  
 Wet space: No  
 Addition: No  
 Conversion: No

**13** Floor 2 - Living Room



Dimensions: 17'2" x 16'2"  
 Area: 277 sq. ft  
 Counted as living area: Yes

Heated: Yes  
 Finished: Yes  
 Enclosed: Yes  
 Contiguous: Yes  
 Permitted: Yes  
 Wet space: No  
 Addition: No  
 Conversion: No

**14** Floor 2 - Bedroom



Dimensions: 14'0" x 13'1"  
 Area: 139 sq. ft  
 Counted as living area: Yes

Heated: Yes  
 Finished: Yes  
 Enclosed: Yes  
 Contiguous: Yes  
 Permitted: Yes  
 Wet space: No  
 Addition: No  
 Conversion: No

**15** Floor 2 - Bath



Dimensions: 6'3" x 7'3"  
 Area: 41 sq. ft  
 Counted as living area: Yes

Heated: Yes  
 Finished: Yes  
 Enclosed: Yes  
 Contiguous: Yes  
 Permitted: Yes  
 Wet space: Yes  
 Addition: No  
 Conversion: No

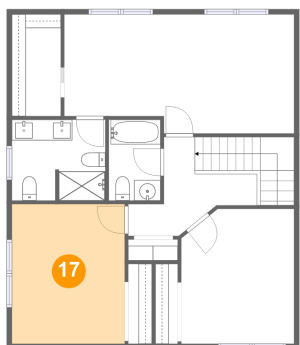
**16** Floor 2 - Kitchen



Dimensions: 19'6" x 11'6"  
 Area: 224 sq. ft  
 Counted as living area: Yes

Heated: Yes  
 Finished: Yes  
 Enclosed: Yes  
 Contiguous: Yes  
 Permitted: Yes  
 Wet space: No  
 Addition: No  
 Conversion: No

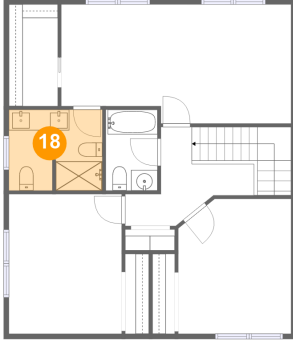
**17** Floor 3 - Bedroom



Dimensions: 10'11" x 13'6"  
 Area: 147 sq. ft  
 Counted as living area: Yes

Heated: Yes  
 Finished: Yes  
 Enclosed: Yes  
 Contiguous: Yes  
 Permitted: Yes  
 Wet space: No  
 Addition: No  
 Conversion: No

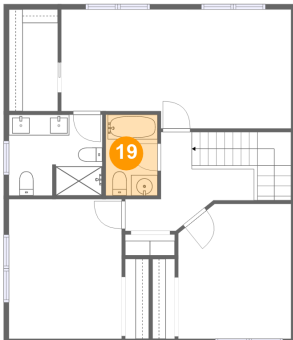
**18** Floor 3 - Bath



Dimensions: 9'0" x 7'10"  
 Area: 69 sq. ft  
 Counted as living area: Yes

Heated: Yes  
 Finished: Yes  
 Enclosed: Yes  
 Contiguous: Yes  
 Permitted: Yes  
 Wet space: Yes  
 Addition: No  
 Conversion: No

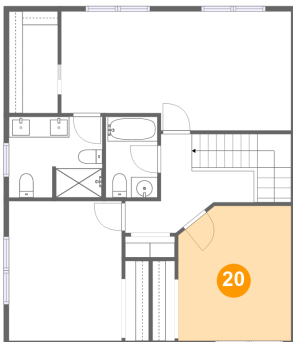
**19** Floor 3 - Bath



Dimensions: 5'0" x 7'10"  
 Area: 39 sq. ft  
 Counted as living area: Yes

Heated: Yes  
 Finished: Yes  
 Enclosed: Yes  
 Contiguous: Yes  
 Permitted: Yes  
 Wet space: Yes  
 Addition: No  
 Conversion: No

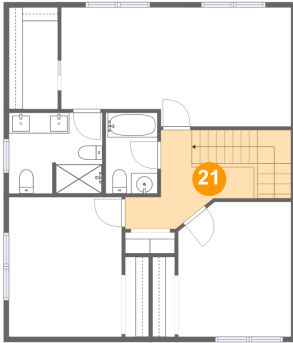
**20** Floor 3 - Bedroom



Dimensions: 10'11" x 13'0"  
 Area: 137 sq. ft  
 Counted as living area: Yes

Heated: Yes  
 Finished: Yes  
 Enclosed: Yes  
 Contiguous: Yes  
 Permitted: Yes  
 Wet space: No  
 Addition: No  
 Conversion: No

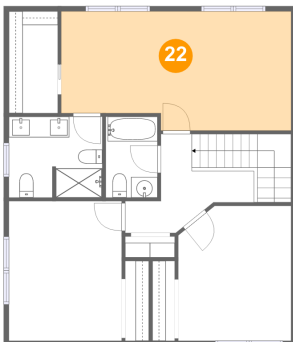
**21** Floor 3 - Hall



Dimensions: 7'10" x 9'7"  
 Area: 103 sq. ft  
 Counted as living area: Yes

Heated: Yes  
 Finished: Yes  
 Enclosed: Yes  
 Contiguous: Yes  
 Permitted: Yes  
 Wet space: No  
 Addition: No  
 Conversion: No

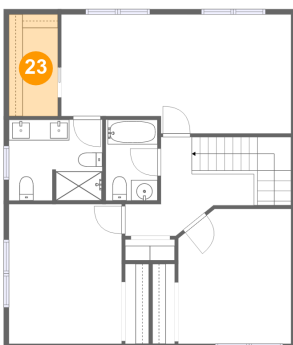
**22** Floor 3 - Primary Bedroom



Dimensions: 22'2" x 11'5"  
 Area: 239 sq. ft  
 Counted as living area: Yes

Heated: Yes  
 Finished: Yes  
 Enclosed: Yes  
 Contiguous: Yes  
 Permitted: Yes  
 Wet space: No  
 Addition: No  
 Conversion: No

**23** Floor 3 - W.I.C.



Dimensions: 4'9" x 9'10"  
 Area: 46 sq. ft  
 Counted as living area: Yes

Heated: Yes  
 Finished: Yes  
 Enclosed: Yes  
 Contiguous: Yes  
 Permitted: Yes  
 Wet space: No  
 Addition: No  
 Conversion: No