

Home report

569 Gordon Court, Livermore, Larimer County, Colorado, United States, 80536



Total Area: 2273 sq. ft


Floor 1: 1014 sq. ft, Floor 2: 1060 sq. ft, Floor 3: 199 sq. ft

Excluded: Covered patio 219 sq. ft, Patio 130 sq. ft, Porch 258 sq. ft, Deck 140 sq. ft, Balcony 127 sq. ft, Walls: 183 sq. ft

Property summary

**3**
Floors

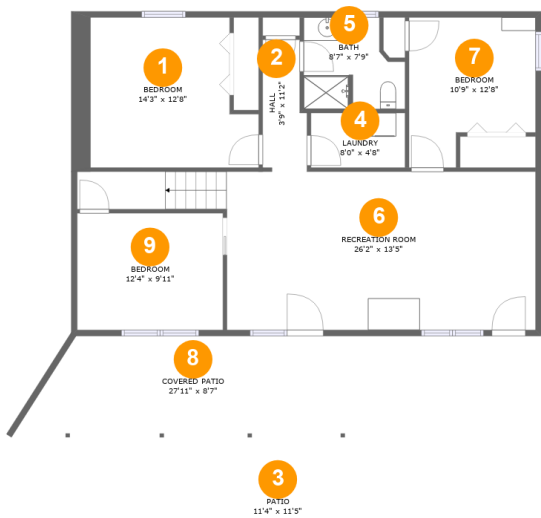
**4**
Bedrooms

**2**
Bathrooms

**1**
Half baths

Home report

569 Gordon Court, Livermore, Larimer County, Colorado, United States, 80536



Room dimensions

Floor 1

Total:1014sqft

Excluded: 349sqft

#		Max Dimensions	sqft	Included
1	Bedroom	14'3" x 12'8"	161 sq. ft	Yes
2	Hall	3'9" x 11'2"	38 sq. ft	Yes
3	Patio	11'4" x 11'5"	130 sq. ft	No
4	Laundry	8'0" x 4'8"	37 sq. ft	Yes
5	Bath	8'7" x 7'9"	58 sq. ft	Yes
6	Recreation Room	26'2" x 13'5"	391 sq. ft	Yes
7	Bedroom	10'9" x 12'8"	117 sq. ft	Yes
8	Covered Patio	27'11" x 8'7"	219 sq. ft	No
9	Bedroom	12'4" x 9'11"	122 sq. ft	Yes

569 Gordon Court, Livermore, Larimer County, Colorado, United States, 80536



Total:1060sqft Excluded: 398sqft

#		Max Dimensions	sqft	Included
10	W.I.C.	5'9" x 8'1"	43 sq. ft	Yes
11	Primary Bath	4'11" x 10'2"	50 sq. ft	Yes
12	Deck	5'9" x 24'3"	140 sq. ft	No
13	Dining Area	11'2" x 13'5"	150 sq. ft	Yes
14	Bath	2'11" x 10'2"	30 sq. ft	Yes
15	Family Room	13'4" x 16'1"	214 sq. ft	Yes
16	Primary Bedroom	17'0" x 13'7"	182 sq. ft	Yes
17	Pantry	3'10" x 3'11"	14 sq. ft	Yes
18	Living Room	14'4" x 13'5"	192 sq. ft	Yes
19	Porch	31'3" x 8'3"	258 sq. ft	No
20	WC	7'6" x 3'0"	23 sq. ft	Yes

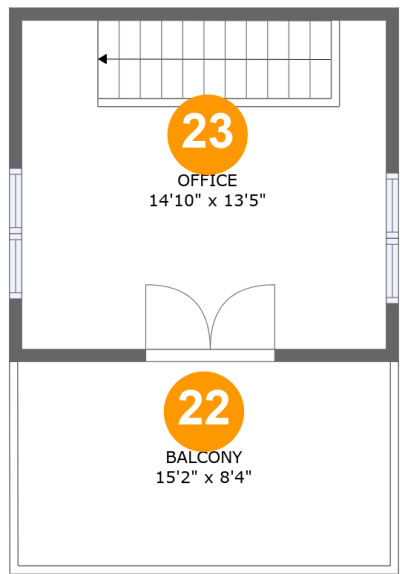
Home report

569 Gordon Court, Livermore, Larimer County, Colorado, United States, 80536

#		Max Dimensions	sqft	Included
21	Kitchen	13'4" x 11'2"	133 sq. ft	Yes

Home report

569 Gordon Court, Livermore, Larimer County, Colorado, United States, 80536



Room dimensions

Floor 3 Total:199sqft Excluded: 127sqft

#		Max Dimensions	sqft	Included
22	Balcony	15'2" x 8'4"	127 sq. ft	No
23	Office	14'10" x 13'5"	199 sq. ft	Yes

1 Floor 1 - Bedroom



Max Dimensions: 14'3" x 12'8"
Calculated Area: 161 sq. ft
Included: Yes

Heated: Yes
Finished: Yes
Enclosed: Yes
Contiguous: Yes
Permitted: Yes
Wet space: No
Addition: No
Conversion: No

2 Floor 1 - Hall



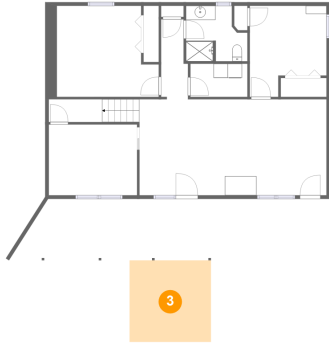
Max Dimensions: 3'9" x 11'2"
Calculated Area: 38 sq. ft
Included: Yes

Heated: Yes
Finished: Yes
Enclosed: Yes
Contiguous: Yes
Permitted: Yes
Wet space: No
Addition: No
Conversion: No

Home report

569 Gordon Court, Livermore, Larimer County, Colorado, United States, 80536

3 Floor 1 - Patio



Max Dimensions: 11'4" x 11'5"
Calculated Area: 130 sq. ft
Included: No

Heated: No
Finished: Yes
Enclosed: No
Contiguous: Yes
Permitted: Yes
Wet space: No
Addition: No
Conversion: No

4 Floor 1 - Laundry



Max Dimensions: 8'0" x 4'8"
Calculated Area: 37 sq. ft
Included: Yes

Heated: Yes
Finished: Yes
Enclosed: Yes
Contiguous: Yes
Permitted: Yes
Wet space: No
Addition: No
Conversion: No

5 Floor 1 - Bath



Max Dimensions: 8'7" x 7'9"
Calculated Area: 58 sq. ft
Included: Yes

Heated: Yes
Finished: Yes
Enclosed: Yes
Contiguous: Yes
Permitted: Yes
Wet space: Yes
Addition: No
Conversion: No

6 Floor 1 - Recreation Room



Max Dimensions: 26'2" x 13'5"
Calculated Area: 391 sq. ft
Included: Yes

Heated: Yes
Finished: Yes
Enclosed: Yes
Contiguous: Yes
Permitted: Yes
Wet space: No
Addition: No
Conversion: No

7 Floor 1 - Bedroom



Max Dimensions: 10'9" x 12'8"
Calculated Area: 117 sq. ft
Included: Yes

Heated: Yes
Finished: Yes
Enclosed: Yes
Contiguous: Yes
Permitted: Yes
Wet space: No
Addition: No
Conversion: No

8 Floor 1 - Covered Patio



Max Dimensions: 27'11" x 8'7"
Calculated Area: 219 sq. ft
Included: No

Heated: No
Finished: Yes
Enclosed: No
Contiguous: Yes
Permitted: Yes
Wet space: No
Addition: No
Conversion: No

569 Gordon Court, Livermore, Larimer County, Colorado, United States, 80536

9 Floor 1 - Bedroom



Max Dimensions: 12'4" x 9'11"
Calculated Area: 122 sq. ft
Included: Yes

Heated: Yes
Finished: Yes
Enclosed: Yes
Contiguous: Yes
Permitted: Yes
Wet space: No
Addition: No
Conversion: No

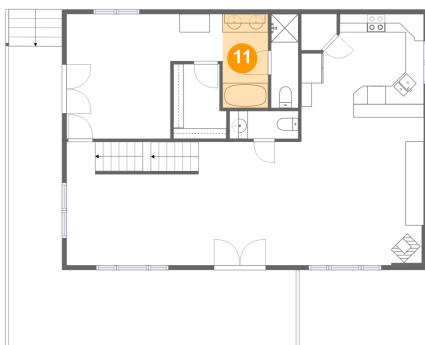
10 Floor 2 - W.I.C.



Max Dimensions: 5'9" x 8'1"
Calculated Area: 43 sq. ft
Included: Yes

Heated: Yes
Finished: Yes
Enclosed: Yes
Contiguous: Yes
Permitted: Yes
Wet space: No
Addition: No
Conversion: No

11 Floor 2 - Primary Bath



Max Dimensions: 4'11" x 10'2"
Calculated Area: 50 sq. ft
Included: Yes

Heated: Yes
Finished: Yes
Enclosed: Yes
Contiguous: Yes
Permitted: Yes
Wet space: Yes
Addition: No
Conversion: No

569 Gordon Court, Livermore, Larimer County, Colorado, United States, 80536

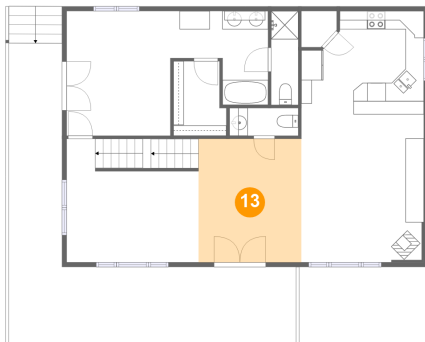
12 Floor 2 - Deck



Max Dimensions: 5'9" x 24'3"
Calculated Area: 140 sq. ft
Included: No

Heated: No
Finished: Yes
Enclosed: No
Contiguous: Yes
Permitted: Yes
Wet space: No
Addition: No
Conversion: No

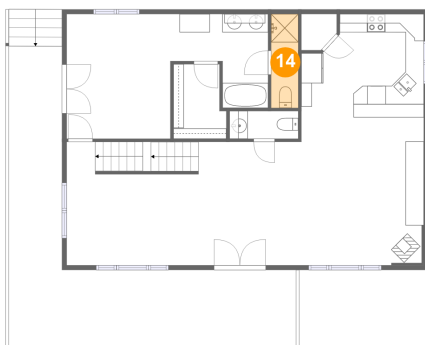
13 Floor 2 - Dining Area



Max Dimensions: 11'2" x 13'5"
Calculated Area: 150 sq. ft
Included: Yes

Heated: Yes
Finished: Yes
Enclosed: Yes
Contiguous: Yes
Permitted: Yes
Wet space: No
Addition: No
Conversion: No

14 Floor 2 - Bath



Max Dimensions: 2'11" x 10'2"
Calculated Area: 30 sq. ft
Included: Yes

Heated: Yes
Finished: Yes
Enclosed: Yes
Contiguous: Yes
Permitted: Yes
Wet space: Yes
Addition: No
Conversion: No

569 Gordon Court, Livermore, Larimer County, Colorado, United States, 80536

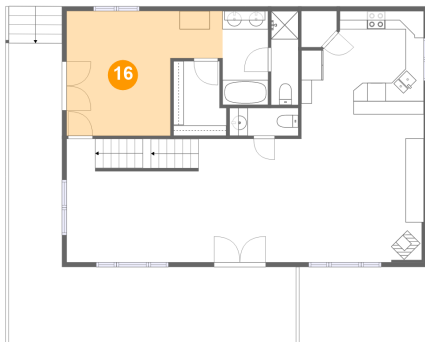
15 Floor 2 - Family Room



Max Dimensions: 13'4" x 16'1"
Calculated Area: 214 sq. ft
Included: Yes

Heated: Yes
Finished: Yes
Enclosed: Yes
Contiguous: Yes
Permitted: Yes
Wet space: No
Addition: No
Conversion: No

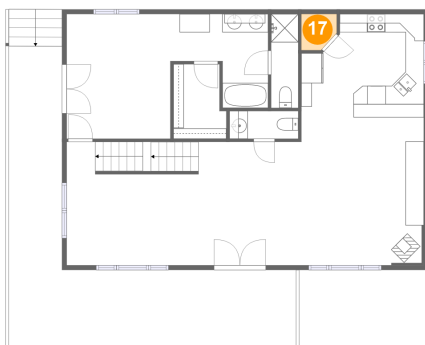
16 Floor 2 - Primary Bedroom



Max Dimensions: 17'0" x 13'7"
Calculated Area: 182 sq. ft
Included: Yes

Heated: Yes
Finished: Yes
Enclosed: Yes
Contiguous: Yes
Permitted: Yes
Wet space: No
Addition: No
Conversion: No

17 Floor 2 - Pantry



Max Dimensions: 3'10" x 3'11"
Calculated Area: 14 sq. ft
Included: Yes

Heated: Yes
Finished: Yes
Enclosed: Yes
Contiguous: Yes
Permitted: Yes
Wet space: No
Addition: No
Conversion: No

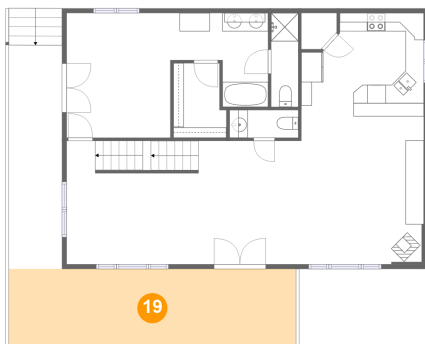
18 Floor 2 - Living Room



Max Dimensions: 14'4" x 13'5"
Calculated Area: 192 sq. ft
Included: Yes

Heated: Yes
Finished: Yes
Enclosed: Yes
Contiguous: Yes
Permitted: Yes
Wet space: No
Addition: No
Conversion: No

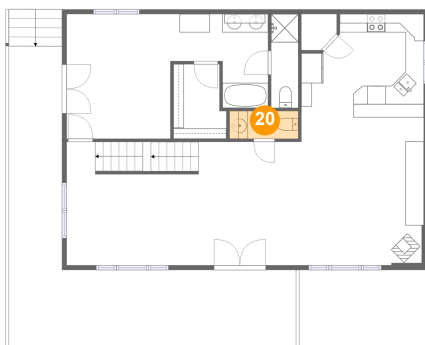
19 Floor 2 - Porch



Max Dimensions: 31'3" x 8'3"
Calculated Area: 258 sq. ft
Included: No

Heated: No
Finished: Yes
Enclosed: No
Contiguous: Yes
Permitted: Yes
Wet space: No
Addition: No
Conversion: No

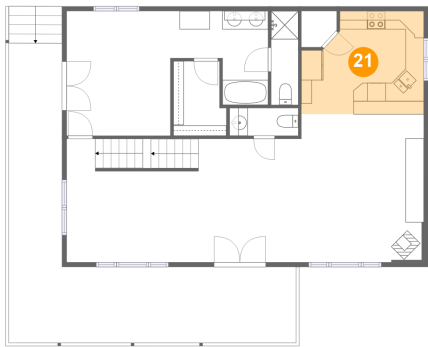
20 Floor 2 - WC



Max Dimensions: 7'6" x 3'0"
Calculated Area: 23 sq. ft
Included: Yes

Heated: Yes
Finished: Yes
Enclosed: Yes
Contiguous: Yes
Permitted: Yes
Wet space: Yes
Addition: No
Conversion: No

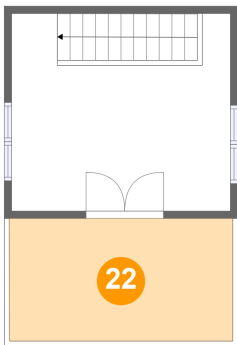
21 Floor 2 - Kitchen



Max Dimensions: 13'4" x 11'2"
Calculated Area: 133 sq. ft
Included: Yes

Heated: Yes
Finished: Yes
Enclosed: Yes
Contiguous: Yes
Permitted: Yes
Wet space: No
Addition: No
Conversion: No

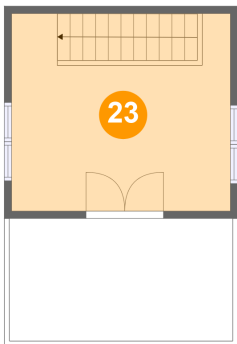
22 Floor 3 - Balcony



Max Dimensions: 15'2" x 8'4"
Calculated Area: 127 sq. ft
Included: No

Heated: No
Finished: Yes
Enclosed: No
Contiguous: Yes
Permitted: Yes
Wet space: No
Addition: No
Conversion: No

23 Floor 3 - Office



Max Dimensions: 14'10" x 13'5"
Calculated Area: 199 sq. ft
Included: Yes

Heated: Yes
Finished: Yes
Enclosed: Yes
Contiguous: Yes
Permitted: Yes
Wet space: No
Addition: No
Conversion: No