

2626 Vermillion Court, Naperville, Will County, Illinois, United States, 60565




Property summary


 **1** Garages

 **5** Bedrooms

 **2** Bathrooms

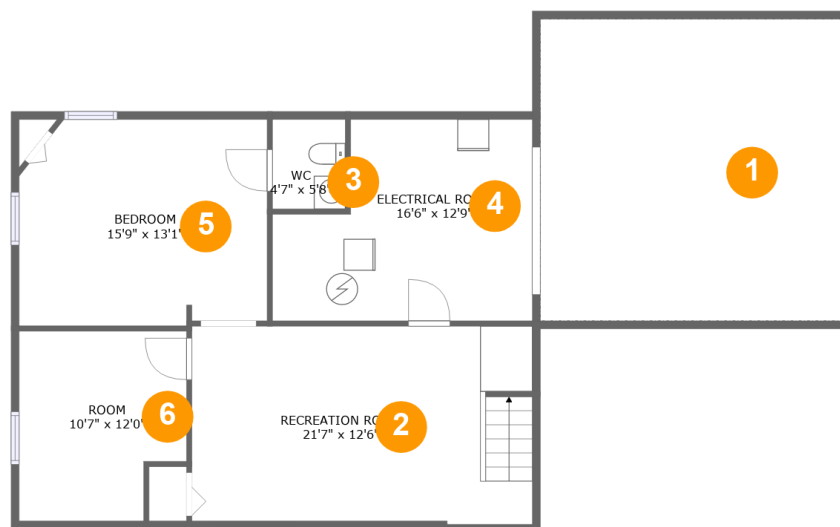
 **2** Half baths

 **3** Floors

 **3,498** Gross living area sqft

 **4,615** Total sqft

2626 Vermillion Court, Naperville, Will County, Illinois, United States, 60565



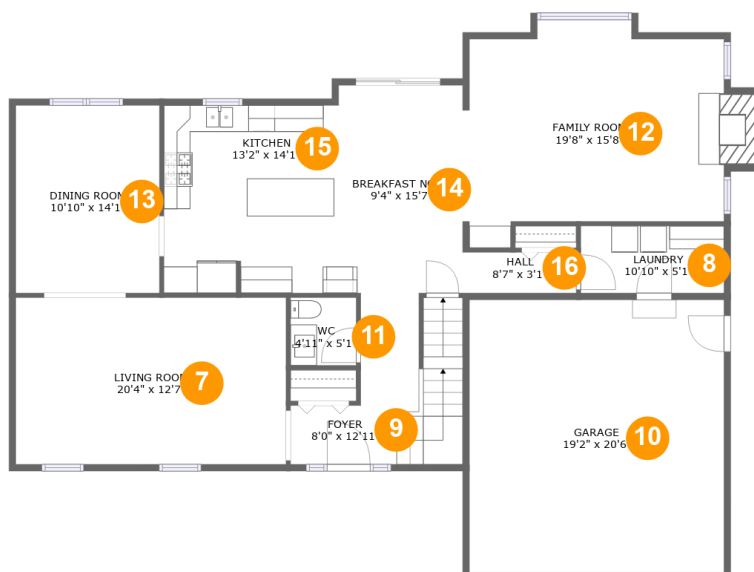
Room dimensions

Floor 1

Total sqft: 1293 Living area: 684

#		Dimensions	sqft	Counted as living area
1	Crawl Space	19'2" x 19'1"	367 sq. ft	No
2	Recreation Room	21'7" x 12'6"	267 sq. ft	Yes
3	WC	4'7" x 5'8"	26 sq. ft	Yes
4	Electrical Room	16'6" x 12'9"	185 sq. ft	No
5	Bedroom	15'9" x 13'1"	199 sq. ft	Yes
6	Room	10'7" x 12'0"	117 sq. ft	Yes

2626 Vermillion Court, Naperville, Will County, Illinois, United States, 60565



Room dimensions

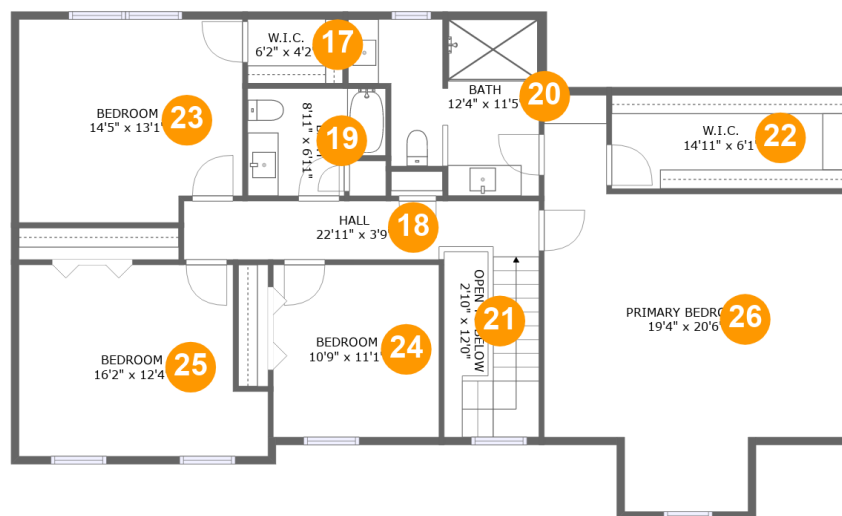
Floor 2

Total sqft: 1831

Living area: 1385

#		Dimensions	sqft	Counted as living area
7	Living Room	20'4" x 12'7"	256 sq. ft	Yes
8	Laundry	10'10" x 5'1"	55 sq. ft	Yes
9	Foyer	8'0" x 12'11"	120 sq. ft	Yes
10	Garage	19'2" x 20'6"	394 sq. ft	No
11	WC	4'11" x 5'1"	25 sq. ft	Yes
12	Family Room	19'8" x 15'8"	288 sq. ft	Yes
13	Dining Room	10'10" x 14'1"	153 sq. ft	Yes
14	Breakfast Nook	9'4" x 15'7"	146 sq. ft	Yes
15	Kitchen	13'2" x 14'1"	185 sq. ft	Yes
16	Hall	8'7" x 3'1"	26 sq. ft	Yes

2626 Vermillion Court, Naperville, Will County, Illinois, United States, 60565



Room dimensions

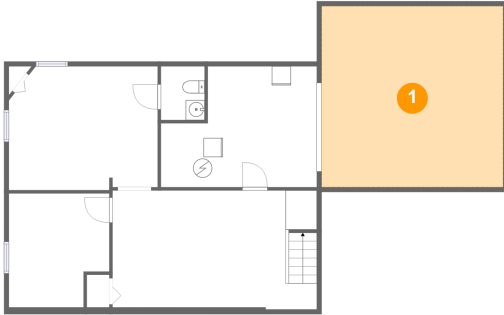
Floor 3

Total sqft: 1491 Living area: 1429

#		Dimensions	sqft	Counted as living area
17	W.I.C.	6'2" x 4'2"	26 sq. ft	Yes
18	Hall	22'11" x 3'9"	130 sq. ft	Yes
19	Bath	8'11" x 6'11"	55 sq. ft	Yes
20	Bath	12'4" x 11'5"	112 sq. ft	Yes
21	Open To Below	2'10" x 12'0"	27 sq. ft	No
22	W.I.C.	14'11" x 6'1"	91 sq. ft	Yes
23	Bedroom	14'5" x 13'1"	183 sq. ft	Yes
24	Bedroom	10'9" x 11'1"	120 sq. ft	Yes
25	Bedroom	16'2" x 12'4"	181 sq. ft	Yes
26	Primary Bedroom	19'4" x 20'6"	341 sq. ft	Yes

**2626 Vermillion Court, Naperville, Will County, Illinois,
United States, 60565**

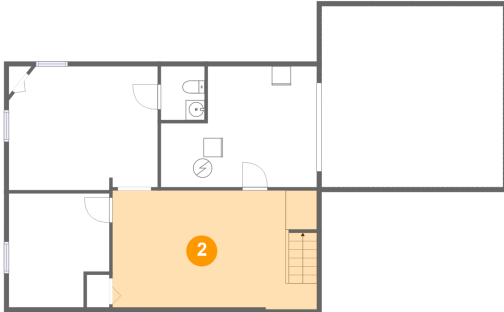
1 Floor 1 - Crawl Space



Dimensions: 19'2" x 19'1"
Area: 367 sq. ft
Counted as living area: No

Heated: No
Finished: No
Enclosed: No
Contiguous: Yes
Permitted: No
Wet space: No
Addition: No
Conversion: No

2 Floor 1 - Recreation Room

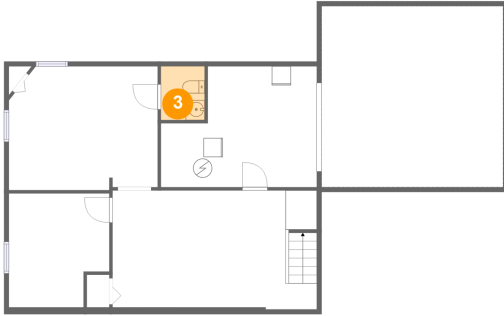


Dimensions: 21'7" x 12'6"
Area: 267 sq. ft
Counted as living area: Yes

Heated: Yes
Finished: Yes
Enclosed: Yes
Contiguous: Yes
Permitted: Yes
Wet space: No
Addition: No
Conversion: No

2626 Vermillion Court, Naperville, Will County, Illinois, United States, 60565

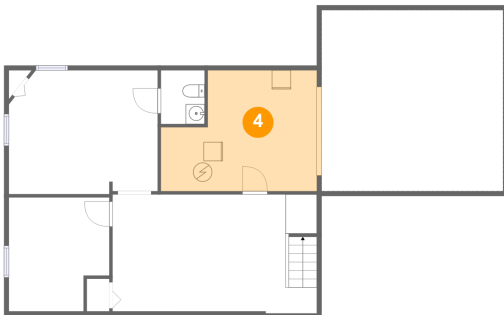
3 Floor 1 - WC



Dimensions: 4'7" x 5'8"
Area: 26 sq. ft
Counted as living area: Yes

Heated: Yes
Finished: Yes
Enclosed: Yes
Contiguous: Yes
Permitted: Yes
Wet space: Yes
Addition: No
Conversion: No

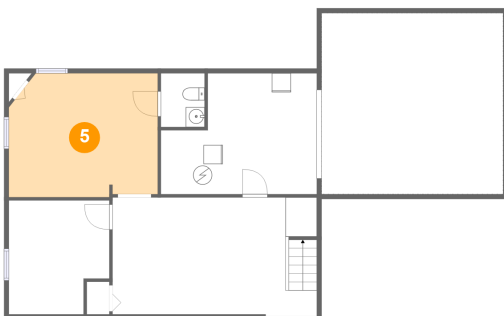
4 Floor 1 - Electrical Room



Dimensions: 16'6" x 12'9"
Area: 185 sq. ft
Counted as living area: No

Heated: No
Finished: No
Enclosed: Yes
Contiguous: Yes
Permitted: Yes
Wet space: No
Addition: No
Conversion: No

5 Floor 1 - Bedroom

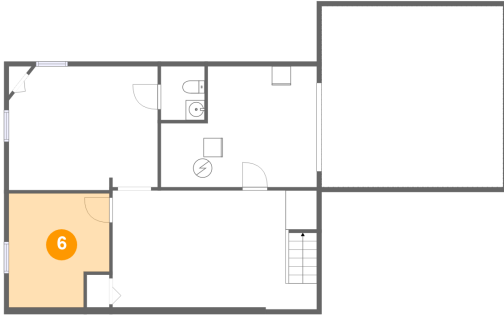


Dimensions: 15'9" x 13'1"
Area: 199 sq. ft
Counted as living area: Yes

Heated: Yes
Finished: Yes
Enclosed: Yes
Contiguous: Yes
Permitted: Yes
Wet space: No
Addition: No
Conversion: No

2626 Vermillion Court, Naperville, Will County, Illinois, United States, 60565

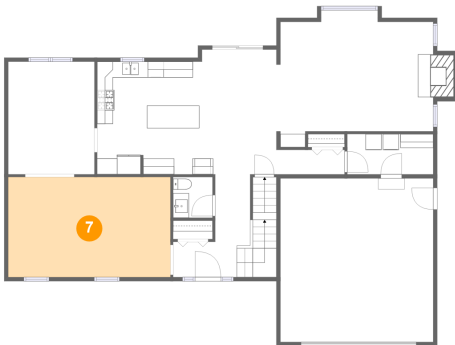
6 Floor 1 - Room



Dimensions: 10'7" x 12'0"
Area: 117 sq. ft
Counted as living area: Yes

Heated: Yes
Finished: Yes
Enclosed: Yes
Contiguous: Yes
Permitted: Yes
Wet space: No
Addition: No
Conversion: No

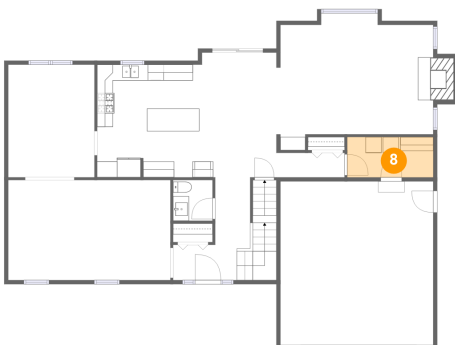
7 Floor 2 - Living Room



Dimensions: 20'4" x 12'7"
Area: 256 sq. ft
Counted as living area: Yes

Heated: Yes
Finished: Yes
Enclosed: Yes
Contiguous: Yes
Permitted: Yes
Wet space: No
Addition: No
Conversion: No

8 Floor 2 - Laundry

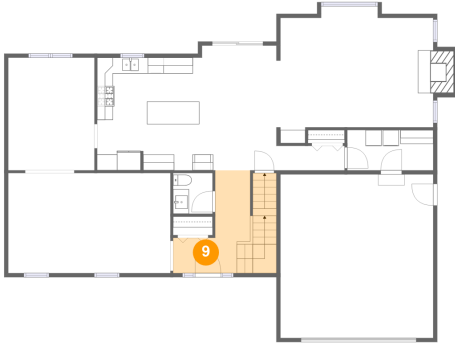


Dimensions: 10'10" x 5'1"
Area: 55 sq. ft
Counted as living area: Yes

Heated: Yes
Finished: Yes
Enclosed: Yes
Contiguous: Yes
Permitted: Yes
Wet space: No
Addition: No
Conversion: No

2626 Vermillion Court, Naperville, Will County, Illinois, United States, 60565

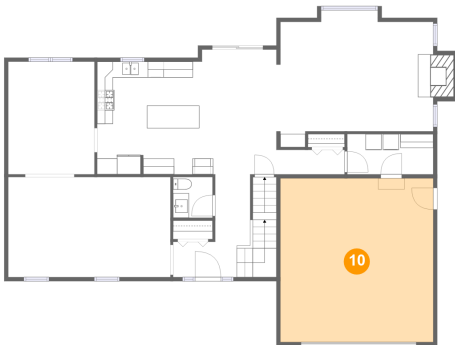
9 Floor 2 - Foyer



Dimensions: 8'0" x 12'11"
Area: 120 sq. ft
Counted as living area: Yes

Heated: Yes
Finished: Yes
Enclosed: Yes
Contiguous: Yes
Permitted: Yes
Wet space: No
Addition: No
Conversion: No

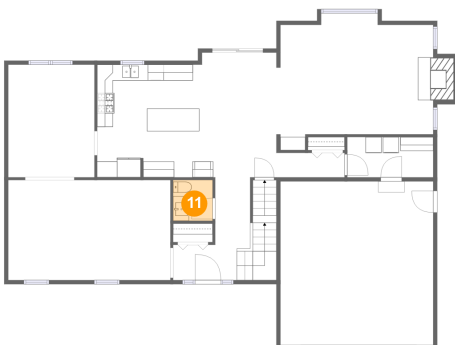
10 Floor 2 - Garage



Dimensions: 19'2" x 20'6"
Area: 394 sq. ft
Counted as living area: No

Heated: No
Finished: No
Enclosed: Yes
Contiguous: Yes
Permitted: Yes
Wet space: No
Addition: No
Conversion: No

11 Floor 2 - WC

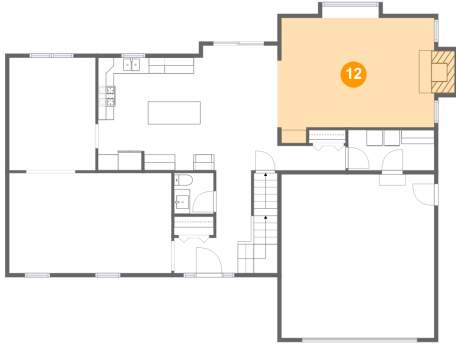


Dimensions: 4'11" x 5'1"
Area: 25 sq. ft
Counted as living area: Yes

Heated: Yes
Finished: Yes
Enclosed: Yes
Contiguous: Yes
Permitted: Yes
Wet space: Yes
Addition: No
Conversion: No

2626 Vermillion Court, Naperville, Will County, Illinois, United States, 60565

12 Floor 2 - Family Room



Dimensions: 19'8" x 15'8"
Area: 288 sq. ft
Counted as living area: Yes

Heated: Yes
Finished: Yes
Enclosed: Yes
Contiguous: Yes
Permitted: Yes
Wet space: No
Addition: No
Conversion: No

13 Floor 2 - Dining Room



Dimensions: 10'10" x 14'1"
Area: 153 sq. ft
Counted as living area: Yes

Heated: Yes
Finished: Yes
Enclosed: Yes
Contiguous: Yes
Permitted: Yes
Wet space: No
Addition: No
Conversion: No

14 Floor 2 - Breakfast Nook

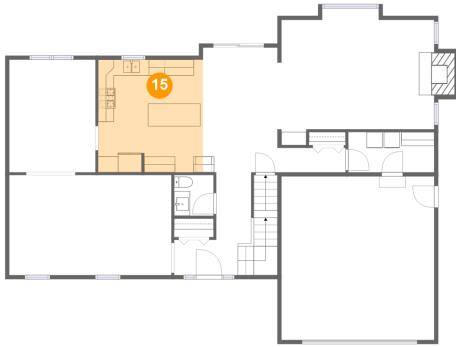


Dimensions: 9'4" x 15'7"
Area: 146 sq. ft
Counted as living area: Yes

Heated: Yes
Finished: Yes
Enclosed: Yes
Contiguous: Yes
Permitted: Yes
Wet space: No
Addition: No
Conversion: No

**2626 Vermillion Court, Naperville, Will County, Illinois,
United States, 60565**

15 Floor 2 - Kitchen



Dimensions: 13'2" x 14'1"
Area: 185 sq. ft
Counted as living area: Yes

Heated: Yes
Finished: Yes
Enclosed: Yes
Contiguous: Yes
Permitted: Yes
Wet space: No
Addition: No
Conversion: No

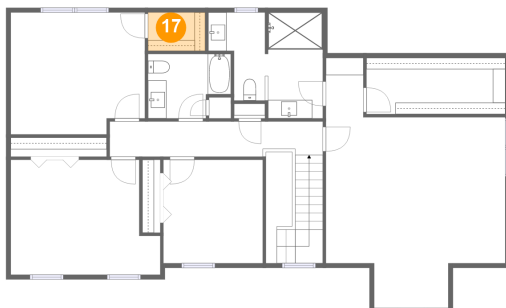
16 Floor 2 - Hall



Dimensions: 8'7" x 3'1"
Area: 26 sq. ft
Counted as living area: Yes

Heated: Yes
Finished: Yes
Enclosed: Yes
Contiguous: Yes
Permitted: Yes
Wet space: No
Addition: No
Conversion: No

17 Floor 3 - W.I.C.

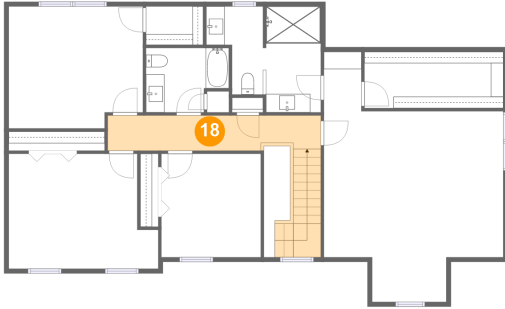


Dimensions: 6'2" x 4'2"
Area: 26 sq. ft
Counted as living area: Yes

Heated: Yes
Finished: Yes
Enclosed: Yes
Contiguous: Yes
Permitted: Yes
Wet space: No
Addition: No
Conversion: No

**2626 Vermillion Court, Naperville, Will County, Illinois,
United States, 60565**

18 Floor 3 - Hall



Dimensions: 22'11" x 3'9"
Area: 130 sq. ft
Counted as living area: Yes

Heated: Yes
Finished: Yes
Enclosed: Yes
Contiguous: Yes
Permitted: Yes
Wet space: No
Addition: No
Conversion: No

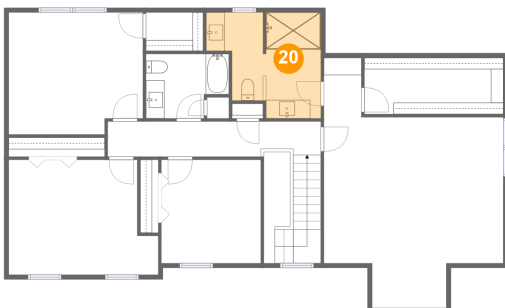
19 Floor 3 - Bath



Dimensions: 8'11" x 6'11"
Area: 55 sq. ft
Counted as living area: Yes

Heated: Yes
Finished: Yes
Enclosed: Yes
Contiguous: Yes
Permitted: Yes
Wet space: Yes
Addition: No
Conversion: No

20 Floor 3 - Bath



Dimensions: 12'4" x 11'5"
Area: 112 sq. ft
Counted as living area: Yes

Heated: Yes
Finished: Yes
Enclosed: Yes
Contiguous: Yes
Permitted: Yes
Wet space: Yes
Addition: No
Conversion: No

**2626 Vermillion Court, Naperville, Will County, Illinois,
United States, 60565**

21 Floor 3 - Open To Below



Dimensions: 2'10" x 12'0"
Area: 27 sq. ft
Counted as living area: No

Heated: No
Finished: No
Enclosed: No
Contiguous: Yes
Permitted: No
Wet space: No
Addition: No
Conversion: No

22 Floor 3 - W.I.C.



Dimensions: 14'11" x 6'1"
Area: 91 sq. ft
Counted as living area: Yes

Heated: Yes
Finished: Yes
Enclosed: Yes
Contiguous: Yes
Permitted: Yes
Wet space: No
Addition: No
Conversion: No

23 Floor 3 - Bedroom



Dimensions: 14'5" x 13'1"
Area: 183 sq. ft
Counted as living area: Yes

Heated: Yes
Finished: Yes
Enclosed: Yes
Contiguous: Yes
Permitted: Yes
Wet space: No
Addition: No
Conversion: No

**2626 Vermillion Court, Naperville, Will County, Illinois,
United States, 60565**

24 Floor 3 - Bedroom



Dimensions: 10'9" x 11'1"
Area: 120 sq. ft
Counted as living area: Yes

Heated: Yes
Finished: Yes
Enclosed: Yes
Contiguous: Yes
Permitted: Yes
Wet space: No
Addition: No
Conversion: No

25 Floor 3 - Bedroom



Dimensions: 16'2" x 12'4"
Area: 181 sq. ft
Counted as living area: Yes

Heated: Yes
Finished: Yes
Enclosed: Yes
Contiguous: Yes
Permitted: Yes
Wet space: No
Addition: No
Conversion: No

26 Floor 3 - Primary Bedroom



Dimensions: 19'4" x 20'6"
Area: 341 sq. ft
Counted as living area: Yes

Heated: Yes
Finished: Yes
Enclosed: Yes
Contiguous: Yes
Permitted: Yes
Wet space: No
Addition: No
Conversion: No