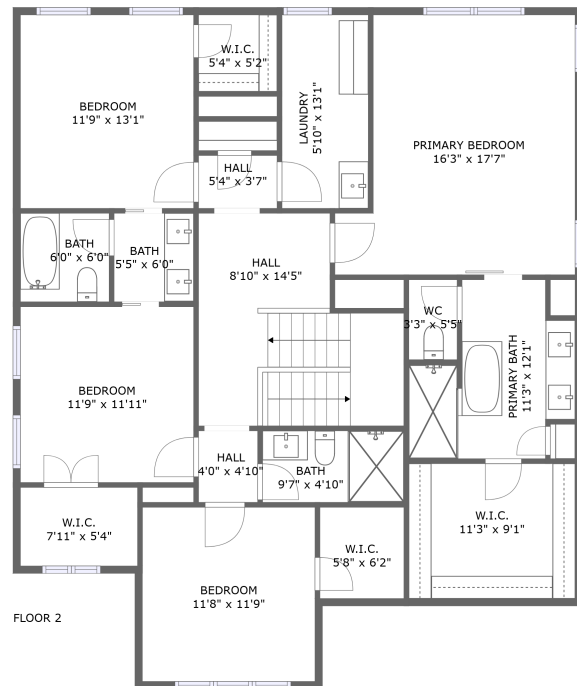
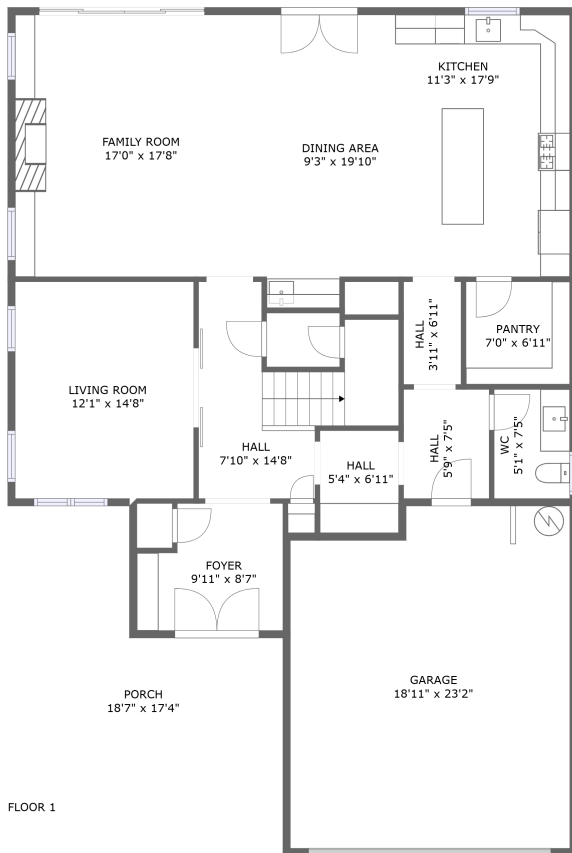



# 5129 Lee Rd, Gainesville, GA, US



## Property summary

 **1** Garages

 **4** Bedrooms

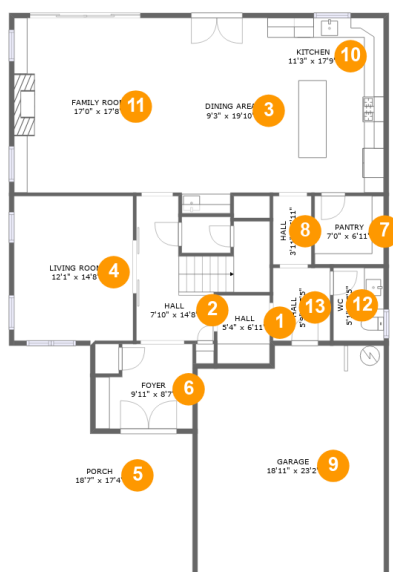
 **3** Bathrooms

 **1** Half baths

 **2** Floors

 **3,024** Gross living area sqft

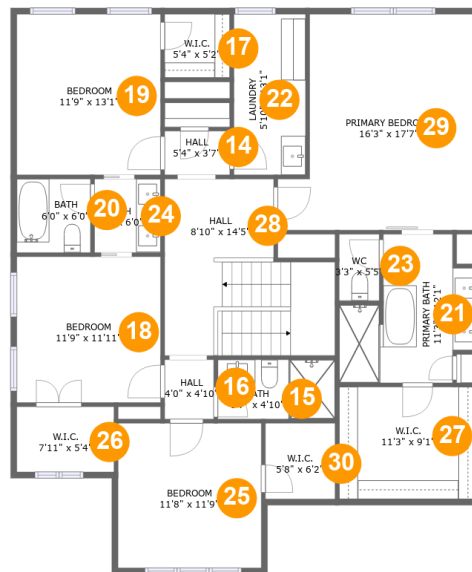
 **3,702** Total sqft

**5129 Lee Rd, Gainesville, GA, US****Room dimensions****Floor 1****Total sqft: 2091    Living area: 1413**

#		Dimensions	sqft	Counted as living area
1	Hall	5'4" x 6'11"	37 sq. ft	Yes
2	Hall	7'10" x 14'8"	127 sq. ft	Yes
3	Dining Area	9'3" x 19'10"	174 sq. ft	Yes
4	Living Room	12'1" x 14'8"	177 sq. ft	Yes
5	Porch	18'7" x 17'4"	230 sq. ft	No
6	Foyer	9'11" x 8'7"	76 sq. ft	Yes
7	Pantry	7'0" x 6'11"	49 sq. ft	Yes
8	Hall	3'11" x 6'11"	27 sq. ft	Yes
9	Garage	18'11" x 23'2"	419 sq. ft	No
10	Kitchen	11'3" x 17'9"	199 sq. ft	Yes
11	Family Room	17'0" x 17'8"	301 sq. ft	Yes

# 5129 Lee Rd, Gainesville, GA, US

#		Dimensions	sqft	Counted as living area
12	WC	5'1" x 7'5"	38 sq. ft	Yes
13	Hall	5'9" x 7'5"	43 sq. ft	Yes

**5129 Lee Rd, Gainesville, GA, US****Room dimensions**

Floor 2

Total sqft: 1611 Living area: 1611

#		Dimensions	sqft	Counted as living area
14	Hall	5'4" x 3'7"	19 sq. ft	Yes
15	Bath	9'7" x 4'10"	46 sq. ft	Yes
16	Hall	4'0" x 4'10"	19 sq. ft	Yes
17	W.I.C.	5'4" x 5'2"	27 sq. ft	Yes
18	Bedroom	11'9" x 11'11"	139 sq. ft	Yes
19	Bedroom	11'9" x 13'1"	153 sq. ft	Yes
20	Bath	6'0" x 6'0"	36 sq. ft	Yes
21	Primary Bath	11'3" x 12'1"	104 sq. ft	Yes
22	Laundry	5'10" x 13'1"	76 sq. ft	Yes
23	WC	3'3" x 5'5"	18 sq. ft	Yes
24	Bath	5'5" x 6'0"	32 sq. ft	Yes

**5129 Lee Rd, Gainesville, GA, US**

#		Dimensions	sqft	Counted as living area
25	Bedroom	11'8" x 11'9"	137 sq. ft	Yes
26	W.I.C.	7'11" x 5'4"	42 sq. ft	Yes
27	W.I.C.	11'3" x 9'1"	103 sq. ft	Yes
28	Hall	8'10" x 14'5"	166 sq. ft	Yes
29	Primary Bedroom	16'3" x 17'7"	251 sq. ft	Yes
30	W.I.C.	5'8" x 6'2"	35 sq. ft	Yes

## 1 Floor 1 - Hall



Dimensions: 5'4" x 6'11"  
Area: 37 sq. ft  
Counted as living area: Yes

Heated: Yes  
Finished: Yes  
Enclosed: Yes  
Contiguous: Yes  
Permitted: Yes  
Wet space: No  
Addition: No  
Conversion: No

## 2 Floor 1 - Hall

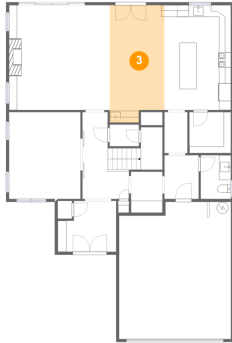


Dimensions: 7'10" x 14'8"  
Area: 127 sq. ft  
Counted as living area: Yes

Heated: Yes  
Finished: Yes  
Enclosed: Yes  
Contiguous: Yes  
Permitted: Yes  
Wet space: No  
Addition: No  
Conversion: No

# 5129 Lee Rd, Gainesville, GA, US

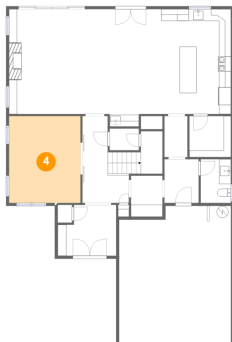
## 3 Floor 1 - Dining Area



**Dimensions:** 9'3" x 19'10"  
**Area:** 174 sq. ft  
**Counted as living area:** Yes

**Heated:** Yes  
**Finished:** Yes  
**Enclosed:** Yes  
**Contiguous:** Yes  
**Permitted:** Yes  
**Wet space:** No  
**Addition:** No  
**Conversion:** No

## 4 Floor 1 - Living Room



**Dimensions:** 12'1" x 14'8"  
**Area:** 177 sq. ft  
**Counted as living area:** Yes

**Heated:** Yes  
**Finished:** Yes  
**Enclosed:** Yes  
**Contiguous:** Yes  
**Permitted:** Yes  
**Wet space:** No  
**Addition:** No  
**Conversion:** No

## 5 Floor 1 - Porch



**Dimensions:** 18'7" x 17'4"  
**Area:** 230 sq. ft  
**Counted as living area:** No

**Heated:** No  
**Finished:** Yes  
**Enclosed:** No  
**Contiguous:** Yes  
**Permitted:** Yes  
**Wet space:** No  
**Addition:** No  
**Conversion:** No

# 5129 Lee Rd, Gainesville, GA, US

## 6 Floor 1 - Foyer



Dimensions: 9'11" x 8'7"  
Area: 76 sq. ft  
Counted as living area: Yes

Heated: Yes  
Finished: Yes  
Enclosed: Yes  
Contiguous: Yes  
Permitted: Yes  
Wet space: No  
Addition: No  
Conversion: No

## 7 Floor 1 - Pantry



Dimensions: 7'0" x 6'11"  
Area: 49 sq. ft  
Counted as living area: Yes

Heated: Yes  
Finished: Yes  
Enclosed: Yes  
Contiguous: Yes  
Permitted: Yes  
Wet space: No  
Addition: No  
Conversion: No

## 8 Floor 1 - Hall



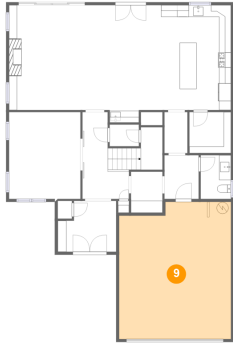
Dimensions: 3'11" x 6'11"  
Area: 27 sq. ft  
Counted as living area: Yes

Heated: Yes  
Finished: Yes  
Enclosed: Yes  
Contiguous: Yes  
Permitted: Yes  
Wet space: No  
Addition: No  
Conversion: No



# 5129 Lee Rd, Gainesville, GA, US

## 9 Floor 1 - Garage



**Dimensions:** 18'11" x 23'2"  
**Area:** 419 sq. ft  
**Counted as living area:** No

**Heated:** No  
**Finished:** No  
**Enclosed:** Yes  
**Contiguous:** Yes  
**Permitted:** Yes  
**Wet space:** No  
**Addition:** No  
**Conversion:** No

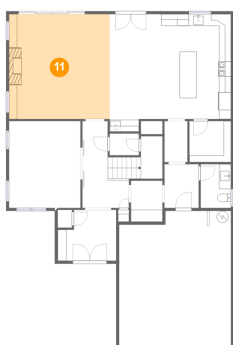
## 10 Floor 1 - Kitchen



**Dimensions:** 11'3" x 17'9"  
**Area:** 199 sq. ft  
**Counted as living area:** Yes

**Heated:** Yes  
**Finished:** Yes  
**Enclosed:** Yes  
**Contiguous:** Yes  
**Permitted:** Yes  
**Wet space:** No  
**Addition:** No  
**Conversion:** No

## 11 Floor 1 - Family Room



**Dimensions:** 17'0" x 17'8"  
**Area:** 301 sq. ft  
**Counted as living area:** Yes

**Heated:** Yes  
**Finished:** Yes  
**Enclosed:** Yes  
**Contiguous:** Yes  
**Permitted:** Yes  
**Wet space:** No  
**Addition:** No  
**Conversion:** No

**12** Floor 1 - WC



Dimensions: 5'1" x 7'5"  
Area: 38 sq. ft  
Counted as living area: Yes

Heated: Yes  
Finished: Yes  
Enclosed: Yes  
Contiguous: Yes  
Permitted: Yes  
Wet space: Yes  
Addition: No  
Conversion: No

**13** Floor 1 - Hall



Dimensions: 5'9" x 7'5"  
Area: 43 sq. ft  
Counted as living area: Yes

Heated: Yes  
Finished: Yes  
Enclosed: Yes  
Contiguous: Yes  
Permitted: Yes  
Wet space: No  
Addition: No  
Conversion: No

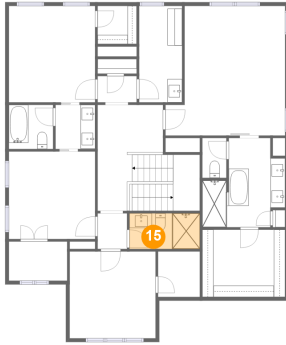
**14** Floor 2 - Hall



Dimensions: 5'4" x 3'7"  
Area: 19 sq. ft  
Counted as living area: Yes

Heated: Yes  
Finished: Yes  
Enclosed: Yes  
Contiguous: Yes  
Permitted: Yes  
Wet space: No  
Addition: No  
Conversion: No

**15** Floor 2 - Bath



Dimensions: 9'7" x 4'10"  
Area: 46 sq. ft  
Counted as living area: Yes

Heated: Yes  
Finished: Yes  
Enclosed: Yes  
Contiguous: Yes  
Permitted: Yes  
Wet space: Yes  
Addition: No  
Conversion: No

**16** Floor 2 - Hall



Dimensions: 4'0" x 4'10"  
Area: 19 sq. ft  
Counted as living area: Yes

Heated: Yes  
Finished: Yes  
Enclosed: Yes  
Contiguous: Yes  
Permitted: Yes  
Wet space: No  
Addition: No  
Conversion: No

**17** Floor 2 - W.I.C.



Dimensions: 5'4" x 5'2"  
Area: 27 sq. ft  
Counted as living area: Yes

Heated: Yes  
Finished: Yes  
Enclosed: Yes  
Contiguous: Yes  
Permitted: Yes  
Wet space: No  
Addition: No  
Conversion: No

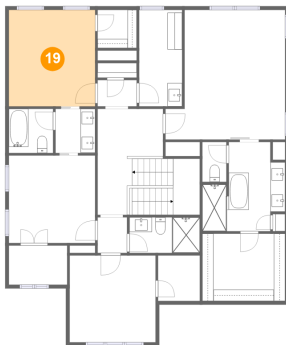
**18** Floor 2 - Bedroom



Dimensions: 11'9" x 11'11"  
Area: 139 sq. ft  
Counted as living area: Yes

Heated: Yes  
Finished: Yes  
Enclosed: Yes  
Contiguous: Yes  
Permitted: Yes  
Wet space: No  
Addition: No  
Conversion: No

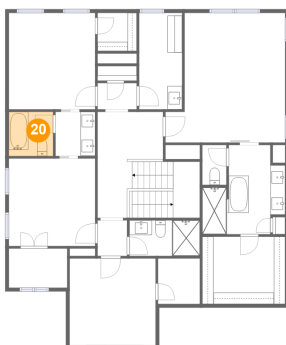
**19** Floor 2 - Bedroom



Dimensions: 11'9" x 13'1"  
Area: 153 sq. ft  
Counted as living area: Yes

Heated: Yes  
Finished: Yes  
Enclosed: Yes  
Contiguous: Yes  
Permitted: Yes  
Wet space: No  
Addition: No  
Conversion: No

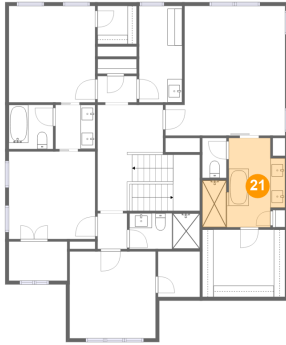
**20** Floor 2 - Bath



Dimensions: 6'0" x 6'0"  
Area: 36 sq. ft  
Counted as living area: Yes

Heated: Yes  
Finished: Yes  
Enclosed: Yes  
Contiguous: Yes  
Permitted: Yes  
Wet space: Yes  
Addition: No  
Conversion: No

**21** Floor 2 - Primary Bath



Dimensions: 11'3" x 12'1"  
Area: 104 sq. ft  
Counted as living area: Yes

Heated: Yes  
Finished: Yes  
Enclosed: Yes  
Contiguous: Yes  
Permitted: Yes  
Wet space: Yes  
Addition: No  
Conversion: No

**22** Floor 2 - Laundry



Dimensions: 5'10" x 13'1"  
Area: 76 sq. ft  
Counted as living area: Yes

Heated: Yes  
Finished: Yes  
Enclosed: Yes  
Contiguous: Yes  
Permitted: Yes  
Wet space: No  
Addition: No  
Conversion: No

**23** Floor 2 - WC

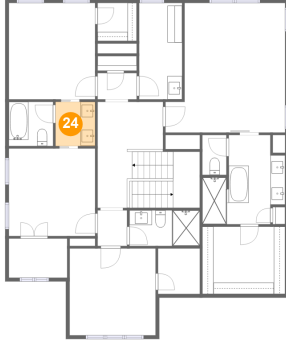


Dimensions: 3'3" x 5'5"  
Area: 18 sq. ft  
Counted as living area: Yes

Heated: Yes  
Finished: Yes  
Enclosed: Yes  
Contiguous: Yes  
Permitted: Yes  
Wet space: Yes  
Addition: No  
Conversion: No

# 5129 Lee Rd, Gainesville, GA, US

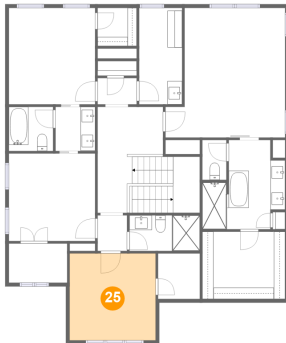
## 24 Floor 2 - Bath



Dimensions: 5'5" x 6'0"  
Area: 32 sq. ft  
Counted as living area: Yes

Heated: Yes  
Finished: Yes  
Enclosed: Yes  
Contiguous: Yes  
Permitted: Yes  
Wet space: Yes  
Addition: No  
Conversion: No

## 25 Floor 2 - Bedroom



Dimensions: 11'8" x 11'9"  
Area: 137 sq. ft  
Counted as living area: Yes

Heated: Yes  
Finished: Yes  
Enclosed: Yes  
Contiguous: Yes  
Permitted: Yes  
Wet space: No  
Addition: No  
Conversion: No

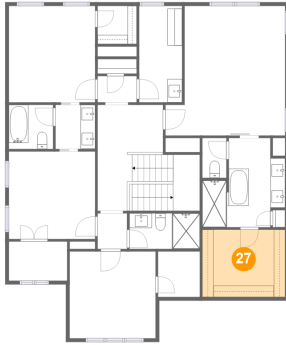
## 26 Floor 2 - W.I.C.



Dimensions: 7'11" x 5'4"  
Area: 42 sq. ft  
Counted as living area: Yes

Heated: Yes  
Finished: Yes  
Enclosed: Yes  
Contiguous: Yes  
Permitted: Yes  
Wet space: No  
Addition: No  
Conversion: No

**27** Floor 2 - W.I.C.



Dimensions: 11'3" x 9'1"  
Area: 103 sq. ft  
Counted as living area: Yes

Heated: Yes  
Finished: Yes  
Enclosed: Yes  
Contiguous: Yes  
Permitted: Yes  
Wet space: No  
Addition: No  
Conversion: No

**28** Floor 2 - Hall



Dimensions: 8'10" x 14'5"  
Area: 166 sq. ft  
Counted as living area: Yes

Heated: Yes  
Finished: Yes  
Enclosed: Yes  
Contiguous: Yes  
Permitted: Yes  
Wet space: No  
Addition: No  
Conversion: No

**29** Floor 2 - Primary Bedroom



Dimensions: 16'3" x 17'7"  
Area: 251 sq. ft  
Counted as living area: Yes

Heated: Yes  
Finished: Yes  
Enclosed: Yes  
Contiguous: Yes  
Permitted: Yes  
Wet space: No  
Addition: No  
Conversion: No

**30** Floor 2 - W.I.C.



**Dimensions:** 5'8" x 6'2"  
**Area:** 35 sq. ft  
**Counted as living area:** Yes

**Heated:** Yes  
**Finished:** Yes  
**Enclosed:** Yes  
**Contiguous:** Yes  
**Permitted:** Yes  
**Wet space:** No  
**Addition:** No  
**Conversion:** No