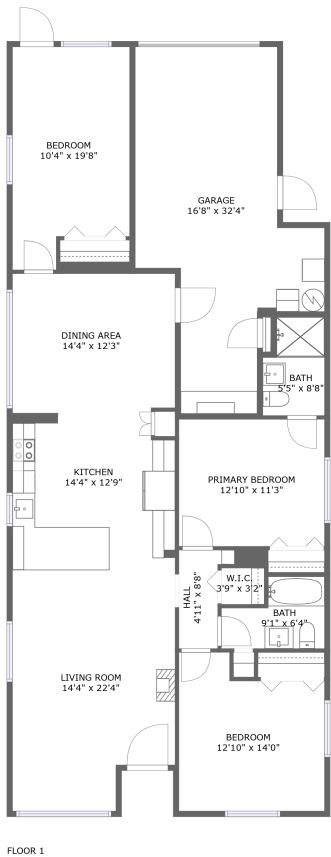


520 34th Avenue North, Five Points, St. Petersburg,
Pinellas County, Florida, United States, 33704



Total Area: 1369 sq. ft

Floor 1: 1369 sq. ft

Excluded: Garage 369 sq. ft, Walls: 129 sq. ft

Property summary

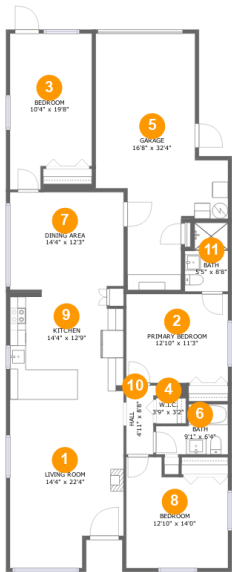
1 Floors

3 Bedrooms

2 Bathrooms

1 Garages

520 34th Avenue North, Five Points, St. Petersburg,
Pinellas County, Florida, United States, 33704



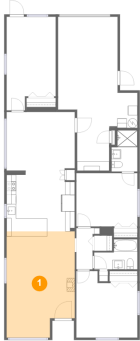
Room dimensions

Floor 1 Total:1369sqft Excluded: 369sqft

#		Max Dimensions	sqft	Included
1	Living Room	14'4" x 22'4"	299 sq. ft	Yes
2	Primary Bedroom	12'10" x 11'3"	144 sq. ft	Yes
3	Bedroom	10'4" x 19'8"	184 sq. ft	Yes
4	W.I.C.	3'9" x 3'2"	12 sq. ft	Yes
5	Garage	16'8" x 32'4"	369 sq. ft	No
6	Bath	9'1" x 6'4"	46 sq. ft	Yes
7	Dining Area	14'4" x 12'3"	176 sq. ft	Yes
8	Bedroom	12'10" x 14'0"	159 sq. ft	Yes
9	Kitchen	14'4" x 12'9"	177 sq. ft	Yes
10	Hall	4'11" x 8'8"	32 sq. ft	Yes
11	Bath	5'5" x 8'8"	43 sq. ft	Yes

520 34th Avenue North, Five Points, St. Petersburg,
Pinellas County, Florida, United States, 33704

1 Floor 1 - Living Room



Max Dimensions: 14'4" x 22'4"
Calculated Area: 299 sq. ft
Included: Yes

Heated: Yes
Finished: Yes
Enclosed: Yes
Contiguous: Yes
Permitted: Yes
Wet space: No
Addition: No
Conversion: No

2 Floor 1 - Primary Bedroom

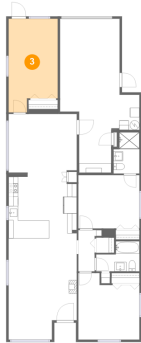


Max Dimensions: 12'10" x 11'3"
Calculated Area: 144 sq. ft
Included: Yes

Heated: Yes
Finished: Yes
Enclosed: Yes
Contiguous: Yes
Permitted: Yes
Wet space: No
Addition: No
Conversion: No

520 34th Avenue North, Five Points, St. Petersburg,
Pinellas County, Florida, United States, 33704

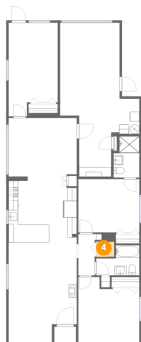
3 Floor 1 - Bedroom



Max Dimensions: 10'4" x 19'8"
Calculated Area: 184 sq. ft
Included: Yes

Heated: Yes
Finished: Yes
Enclosed: Yes
Contiguous: Yes
Permitted: Yes
Wet space: No
Addition: No
Conversion: No

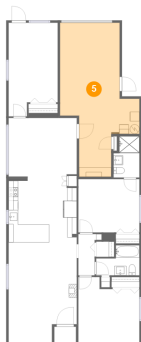
4 Floor 1 - W.I.C.



Max Dimensions: 3'9" x 3'2"
Calculated Area: 12 sq. ft
Included: Yes

Heated: Yes
Finished: Yes
Enclosed: Yes
Contiguous: Yes
Permitted: Yes
Wet space: No
Addition: No
Conversion: No

5 Floor 1 - Garage



Max Dimensions: 16'8" x 32'4"
Calculated Area: 369 sq. ft
Included: No

Heated: No
Finished: No
Enclosed: Yes
Contiguous: Yes
Permitted: Yes
Wet space: No
Addition: No
Conversion: No

520 34th Avenue North, Five Points, St. Petersburg,
Pinellas County, Florida, United States, 33704

6 Floor 1 - Bath



Max Dimensions: 9'1" x 6'4"
Calculated Area: 46 sq. ft
Included: Yes

Heated: Yes
Finished: Yes
Enclosed: Yes
Contiguous: Yes
Permitted: Yes
Wet space: Yes
Addition: No
Conversion: No

7 Floor 1 - Dining Area



Max Dimensions: 14'4" x 12'3"
Calculated Area: 176 sq. ft
Included: Yes

Heated: Yes
Finished: Yes
Enclosed: Yes
Contiguous: Yes
Permitted: Yes
Wet space: No
Addition: No
Conversion: No

8 Floor 1 - Bedroom



Max Dimensions: 12'10" x 14'0"
Calculated Area: 159 sq. ft
Included: Yes

Heated: Yes
Finished: Yes
Enclosed: Yes
Contiguous: Yes
Permitted: Yes
Wet space: No
Addition: No
Conversion: No

520 34th Avenue North, Five Points, St. Petersburg,
Pinellas County, Florida, United States, 33704

9 Floor 1 - Kitchen



Max Dimensions: 14'4" x 12'9"
Calculated Area: 177 sq. ft
Included: Yes

Heated: Yes
Finished: Yes
Enclosed: Yes
Contiguous: Yes
Permitted: Yes
Wet space: No
Addition: No
Conversion: No

10 Floor 1 - Hall



Max Dimensions: 4'11" x 8'8"
Calculated Area: 32 sq. ft
Included: Yes

Heated: Yes
Finished: Yes
Enclosed: Yes
Contiguous: Yes
Permitted: Yes
Wet space: No
Addition: No
Conversion: No

11 Floor 1 - Bath



Max Dimensions: 5'5" x 8'8"
Calculated Area: 43 sq. ft
Included: Yes

Heated: Yes
Finished: Yes
Enclosed: Yes
Contiguous: Yes
Permitted: Yes
Wet space: Yes
Addition: No
Conversion: No