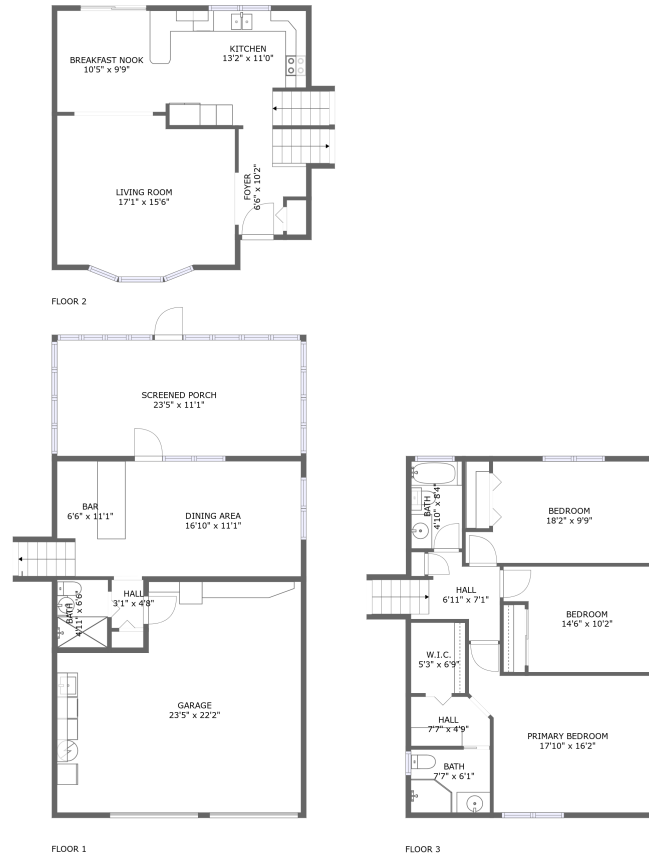


8212 Forest Circle North, Oakhurst Terrace, Seminole, Pinellas County, Florida, United

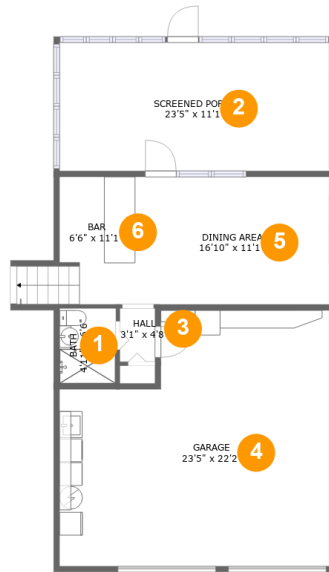


Property Summary

 **1** garages  **3** bedrooms  **3** bathrooms  **0** half baths

 **3** floors  **1,873** Gross Living Area sqft  **2,645** total sqft

8212 Forest Circle North, Oakhurst Terrace, Seminole, Pinellas County, Florida, United



Room Dimensions

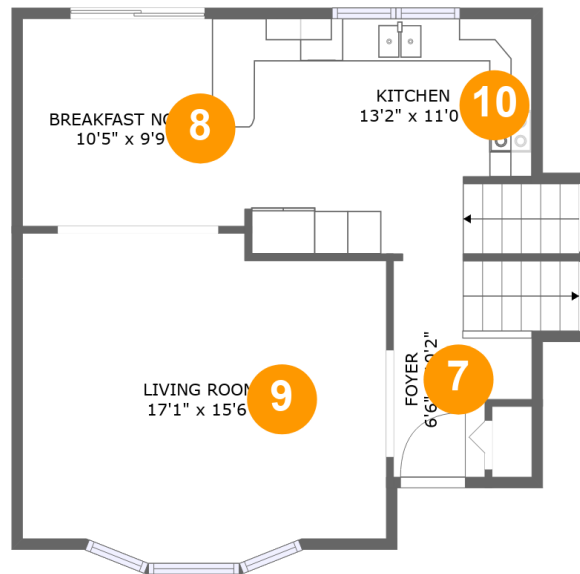
Floor 1

Total sqft: 1145

Living area: 373

#	Room name	Dimensions	Area (sqft)	Counted as Living Area
1	Bath	4'11" x 6'6"	32 sq. ft	Yes
2	Screened Porch	23'5" x 11'1"	260 sq. ft	No
3	Hall	3'1" x 4'8"	14 sq. ft	Yes
4	Garage	23'5" x 22'2"	458 sq. ft	No
5	Dining Area	16'10" x 11'1"	186 sq. ft	Yes
6	Bar	6'6" x 11'1"	84 sq. ft	Yes

8212 Forest Circle North, Oakhurst Terrace, Seminole, Pinellas County, Florida, United



Room Dimensions

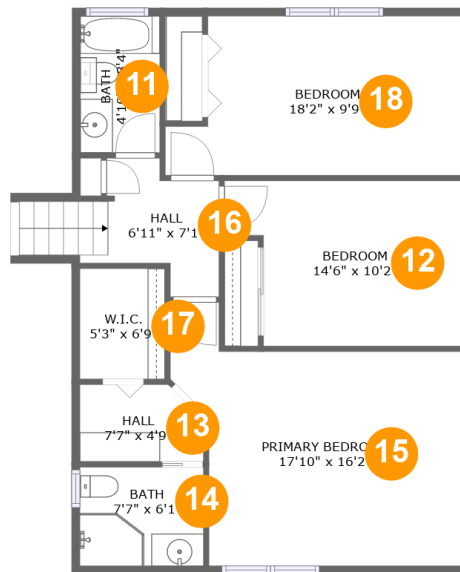
Floor 2

Total sqft: 638

Living area: 638

#	Room name	Dimensions	Area (sqft)	Counted as Living Area
7	Foyer	6'6" x 10'2"	65 sq. ft	Yes
8	Breakfast Nook	10'5" x 9'9"	104 sq. ft	Yes
9	Living Room	17'1" x 15'6"	244 sq. ft	Yes
10	Kitchen	13'2" x 11'0"	152 sq. ft	Yes

8212 Forest Circle North, Oakhurst Terrace, Seminole, Pinellas County, Florida, United



Room Dimensions

Floor 3

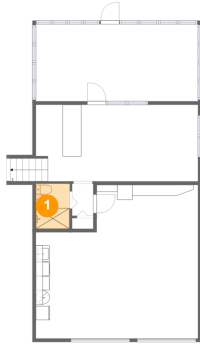
Total sqft: 862

Living area: 862

#	Room name	Dimensions	Area (sqft)	Counted as Living Area
11	Bath	4'10" x 8'4"	41 sq. ft	Yes
12	Bedroom	14'6" x 10'2"	131 sq. ft	Yes
13	Hall	7'7" x 4'9"	34 sq. ft	Yes
14	Bath	7'7" x 6'1"	46 sq. ft	Yes
15	Primary Bedroom	17'10" x 16'2"	219 sq. ft	Yes
16	Hall	6'11" x 7'1"	64 sq. ft	Yes
17	W.i.c.	5'3" x 6'9"	35 sq. ft	Yes
18	Bedroom	18'2" x 9'9"	159 sq. ft	Yes

8212 Forest Circle North, Oakhurst Terrace, Seminole, Pinellas County, Florida, United

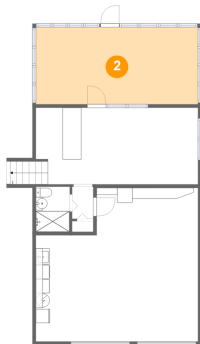
1 Floor 1 - Bath



Dimensions: 4'11" x 6'6"
Area: 32 sq. ft
Counted as Living Area:
Yes

Heated: Yes
Finished: Yes
Enclosed: Yes
Contiguous:
Yes
Permitted: Yes
Wet Space: Yes
Addition: No
Conversion: No

2 Floor 1 - Screened Porch

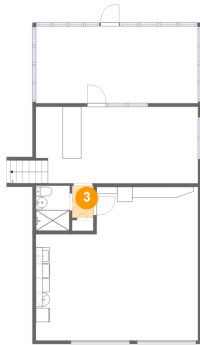


Dimensions: 23'5" x 11'1"
Area: 260 sq. ft
Counted as Living Area: No

Heated: No
Finished: Yes
Enclosed: No
Contiguous: Yes
Permitted: Yes
Wet Space: No
Addition: No
Conversion: No

8212 Forest Circle North, Oakhurst Terrace, Seminole, Pinellas County, Florida, United

3 Floor 1 - Hall



Dimensions: 3'1" x 4'8"
Area: 14 sq. ft
Counted as Living Area:
Yes

Heated: Yes
Finished: Yes
Enclosed: Yes
Contiguous:
Yes
Permitted: Yes
Wet Space: No
Addition: No
Conversion: No

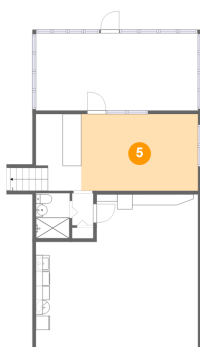
4 Floor 1 - Garage



Dimensions: 23'5" x 22'2"
Area: 458 sq. ft
Counted as Living Area: No

Heated: No
Finished: No
Enclosed: Yes
Contiguous: Yes
Permitted: Yes
Wet Space: No
Addition: No
Conversion: No

5 Floor 1 - Dining Area

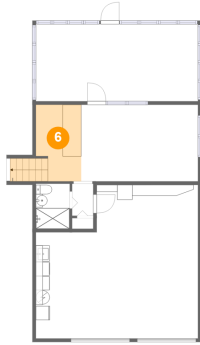


Dimensions: 16'10" x 11'1"
Area: 186 sq. ft
Counted as Living Area:
Yes

Heated: Yes
Finished: Yes
Enclosed: Yes
Contiguous:
Yes
Permitted: Yes
Wet Space: No
Addition: No
Conversion: No

8212 Forest Circle North, Oakhurst Terrace, Seminole, Pinellas County, Florida, United

6 Floor 1 - Bar



Dimensions: 6'6" x 11'1"
Area: 84 sq. ft
Counted as Living Area:
Yes

Heated: Yes
Finished: Yes
Enclosed: Yes
Contiguous:
Yes
Permitted: Yes
Wet Space: No
Addition: No
Conversion: No

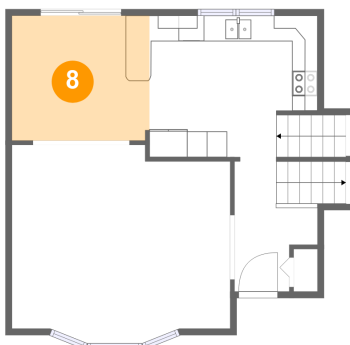
7 Floor 2 - Foyer



Dimensions: 6'6" x 10'2"
Area: 65 sq. ft
Counted as Living Area:
Yes

Heated: Yes
Finished: Yes
Enclosed: Yes
Contiguous:
Yes
Permitted: Yes
Wet Space: No
Addition: No
Conversion: No

8 Floor 2 - Breakfast Nook



Dimensions: 10'5" x 9'9"
Area: 104 sq. ft
Counted as Living Area:
Yes

Heated: Yes
Finished: Yes
Enclosed: Yes
Contiguous:
Yes
Permitted: Yes
Wet Space: No
Addition: No
Conversion: No

8212 Forest Circle North, Oakhurst Terrace, Seminole, Pinellas County, Florida, United

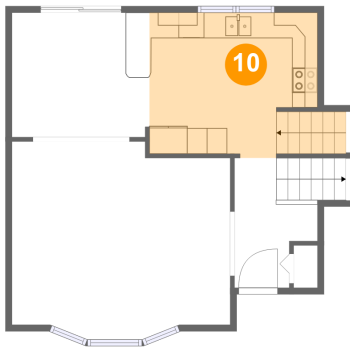
9 Floor 2 - Living Room



Dimensions: 17'1" x 15'6"
Area: 244 sq. ft
Counted as Living Area:
Yes

Heated: Yes
Finished: Yes
Enclosed: Yes
Contiguous:
Yes
Permitted: Yes
Wet Space: No
Addition: No
Conversion: No

10 Floor 2 - Kitchen



Dimensions: 13'2" x 11'0"
Area: 152 sq. ft
Counted as Living Area:
Yes

Heated: Yes
Finished: Yes
Enclosed: Yes
Contiguous:
Yes
Permitted: Yes
Wet Space: No
Addition: No
Conversion: No

11 Floor 3 - Bath



Dimensions: 4'10" x 8'4"
Area: 41 sq. ft
Counted as Living Area:
Yes

Heated: Yes
Finished: Yes
Enclosed: Yes
Contiguous:
Yes
Permitted: Yes
Wet Space: Yes
Addition: No
Conversion: No

8212 Forest Circle North, Oakhurst Terrace, Seminole, Pinellas County, Florida, United

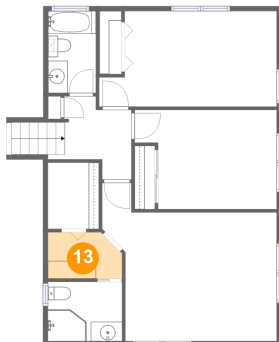
12 Floor 3 - Bedroom



Dimensions: 14'6" x 10'2"
Area: 131 sq. ft
Counted as Living Area:
Yes

Heated: Yes
Finished: Yes
Enclosed: Yes
Contiguous:
Yes
Permitted: Yes
Wet Space: No
Addition: No
Conversion: No

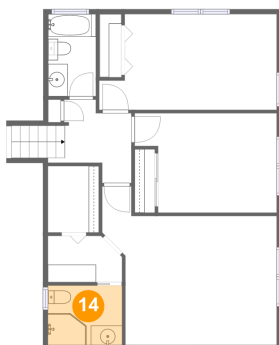
13 Floor 3 - Hall



Dimensions: 7'7" x 4'9"
Area: 34 sq. ft
Counted as Living Area:
Yes

Heated: Yes
Finished: Yes
Enclosed: Yes
Contiguous:
Yes
Permitted: Yes
Wet Space: No
Addition: No
Conversion: No

14 Floor 3 - Bath

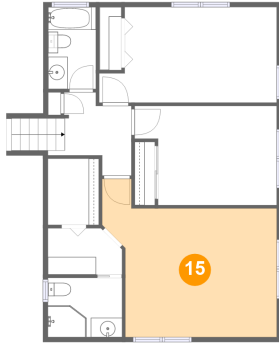


Dimensions: 7'7" x 6'1"
Area: 46 sq. ft
Counted as Living Area:
Yes

Heated: Yes
Finished: Yes
Enclosed: Yes
Contiguous:
Yes
Permitted: Yes
Wet Space: Yes
Addition: No
Conversion: No

8212 Forest Circle North, Oakhurst Terrace, Seminole, Pinellas County, Florida, United

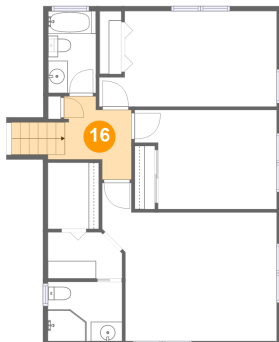
15 Floor 3 - Primary Bedroom



Dimensions: 17'10" x 16'2"
Area: 219 sq. ft
Counted as Living Area:
Yes

Heated: Yes
Finished: Yes
Enclosed: Yes
Contiguous:
Yes
Permitted: Yes
Wet Space: No
Addition: No
Conversion: No

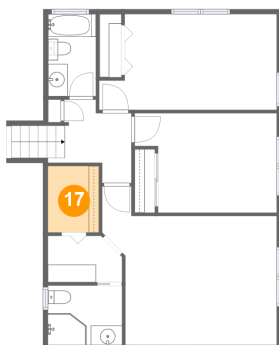
16 Floor 3 - Hall



Dimensions: 6'11" x 7'1"
Area: 64 sq. ft
Counted as Living Area:
Yes

Heated: Yes
Finished: Yes
Enclosed: Yes
Contiguous:
Yes
Permitted: Yes
Wet Space: No
Addition: No
Conversion: No

17 Floor 3 - W.i.c.

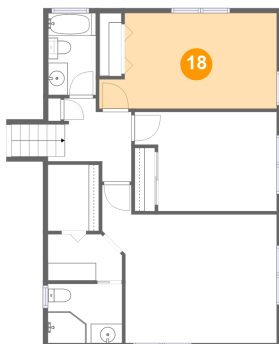


Dimensions: 5'3" x 6'9"
Area: 35 sq. ft
Counted as Living Area:
Yes

Heated: Yes
Finished: Yes
Enclosed: Yes
Contiguous:
Yes
Permitted: Yes
Wet Space: No
Addition: No
Conversion: No

8212 Forest Circle North, Oakhurst Terrace, Seminole, Pinellas County, Florida, United

18 Floor 3 - Bedroom



Dimensions: 18'2" x 9'9"
Area: 159 sq. ft
Counted as Living Area:
Yes

Heated: Yes
Finished: Yes
Enclosed: Yes
Contiguous:
Yes
Permitted: Yes
Wet Space: No
Addition: No
Conversion: No