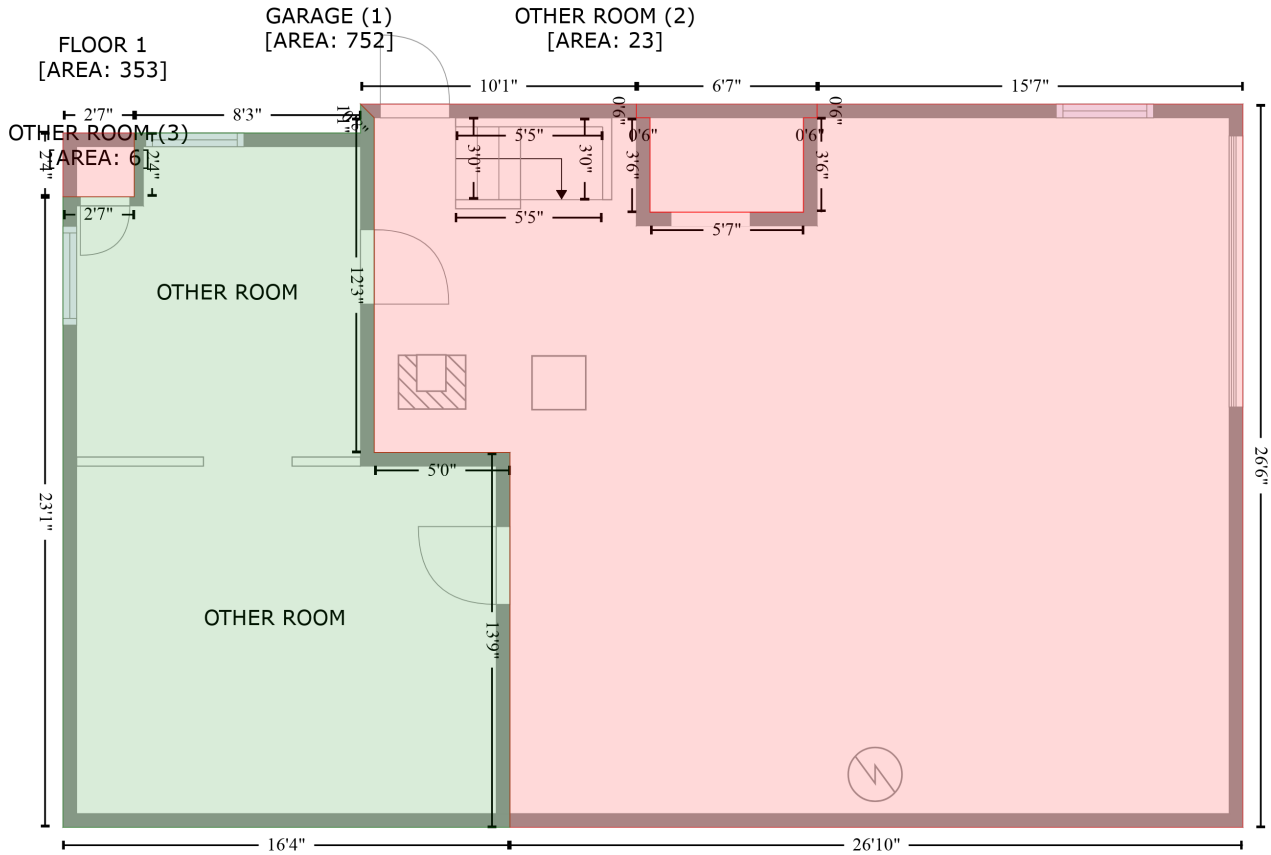


400 Tryon Street, Greer, Greenville County, South Carolina, United States, 29651

Gross Living Area: 1765 sq. ft

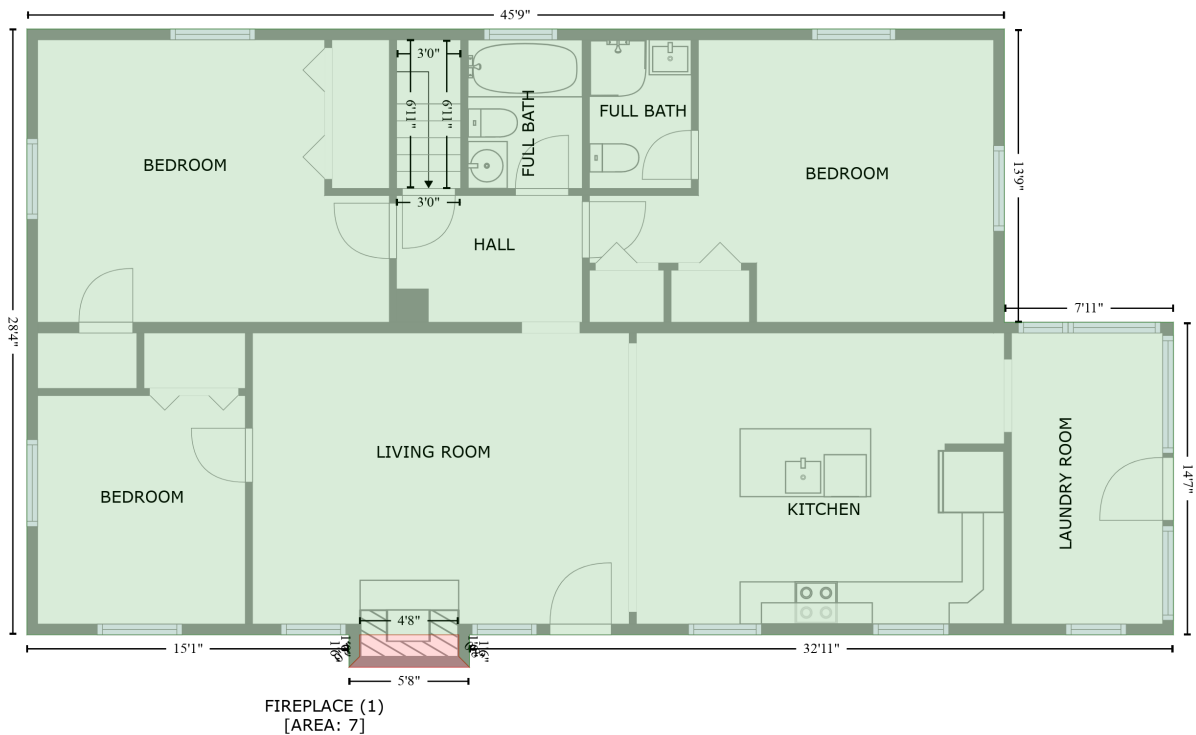


Space	Area (sq. ft)	Calculation <small>Coordinate Polygon Area Algorithm using inches</small>
FLOOR 1 (Living area)	353	$-\left(\left(140.6 + 146.6\right) * \left(32.6 - 38.6\right) + \left(146.6 + 146.6\right) * \left(38.6 - 185.8\right) + \left(146.6 + 206.2\right) * \left(185.8 - 185.8\right) + \left(206.2 + 206.2\right) * \left(185.8 - 350.7\right) + \left(206.2 + 9.8\right) * \left(350.7 - 350.7\right) + \left(9.8 + 9.8\right) * \left(350.7 - 73.3\right) + \left(9.8 + 41.1\right) * \left(73.3 - 73.3\right) + \left(41.1 + 41.1\right) * \left(73.3 - 45.3\right) + \left(41.1 + 140.6\right) * \left(45.3 - 45.3\right) + \left(140.6 + 140.6\right) * \left(45.3 - 32.6\right)\right) * 0.5 * 0.00694$
GARAGE (Non-living area)	752	$-\left(\left(261.8 + 261.8\right) * \left(32.6 - 38.6\right) + \left(261.8 + 267.8\right) * \left(38.6 - 38.6\right) + \left(267.8 + 267.8\right) * \left(38.6 - 80.1\right) + \left(267.8 + 335.2\right) * \left(80.1 - 80.1\right) + \left(335.2 + 335.2\right) * \left(80.1 - 38.6\right) + \left(335.2 + 341.2\right) * \left(38.6 - 38.6\right) + \left(341.2 + 341.2\right) * \left(38.6 - 32.6\right) + \left(341.2 + 528.3\right) * \left(32.6 - 32.6\right) + \left(528.3 + 528.3\right) * \left(32.6 - 350.7\right) + \left(528.3 + 206.2\right) * \left(350.7 - 350.7\right) + \left(206.2 + 206.2\right) * \left(350.7 - 185.8\right) + \left(206.2 + 146.6\right) * \left(185.8 - 185.8\right) + \left(146.6 + 146.6\right) * \left(185.8 - 38.6\right) + \left(146.6 + 140.6\right) * \left(38.6 - 32.6\right) + \left(140.6 + 261.8\right) * \left(32.6 - 32.6\right)\right) * 0.5 * 0.00694$
OTHER ROOM (Non-living area)	23	$-\left(\left(341.2 + 341.2\right) * \left(32.6 - 38.6\right) + \left(341.2 + 335.2\right) * \left(38.6 - 38.6\right) + \left(335.2 + 335.2\right) * \left(38.6 - 80.1\right) + \left(335.2 + 267.8\right) * \left(80.1 - 80.1\right) + \left(267.8 + 267.8\right) * \left(80.1 - 38.6\right) + \left(267.8 + 261.8\right) * \left(38.6 - 38.6\right) + \left(261.8 + 261.8\right) * \left(38.6 - 32.6\right) + \left(261.8 + 341.2\right) * \left(32.6 - 32.6\right)\right) * 0.5 * 0.00694$
OTHER ROOM (Non-living area)	6	$-\left(\left(41.1 + 41.1\right) * \left(45.3 - 73.3\right) + \left(41.1 + 9.8\right) * \left(73.3 - 73.3\right) + \left(9.8 + 9.8\right) * \left(73.3 - 45.3\right) + \left(9.8 + 41.1\right) * \left(45.3 - 45.3\right)\right) * 0.5 * 0.00694$

400 Tryon Street, Greer, Greenville County, South Carolina, United States, 29651

Gross Living Area: 1765 sq. ft

FLOOR 2
[AREA: 1412]



Space	Area (sq. ft)	Calculation <small>Coordinate Polygon Area Algorithm using inches</small>
FLOOR 2 (Living area)	1412	$-\left((552.1 + 552.1) * (32.6 - 197.1) + (552.1 + 646.9) * (197.1 - 197.1) + (646.9 + 646.9) * (197.1 - 372.5) + (646.9 + 251.9) * (372.5 - 372.5) + (251.9 + 251.9) * (372.5 - 390.8) + (251.9 + 245.9) * (390.8 - 384.8) + (245.9 + 245.9) * (384.8 - 372.5) + (245.9 + 190.2) * (372.5 - 372.5) + (190.2 + 190.2) * (372.5 - 384.8) + (190.2 + 184.2) * (384.8 - 390.8) + (184.2 + 184.2) * (390.8 - 372.5) + (184.2 + 3.4) * (372.5 - 372.5) + (3.4 + 3.4) * (372.5 - 32.6) + (3.4 + 552.1) * (32.6 - 32.6)\right) * 0.5 * 0.00694$
FIREPLACE (Non-living area)	7	$-\left((245.9 + 245.9) * (372.5 - 384.8) + (245.9 + 251.9) * (384.8 - 390.8) + (251.9 + 184.2) * (390.8 - 390.8) + (184.2 + 190.2) * (390.8 - 384.8) + (190.2 + 190.2) * (384.8 - 372.5) + (190.2 + 245.9) * (372.5 - 372.5)\right) * 0.5 * 0.00694$