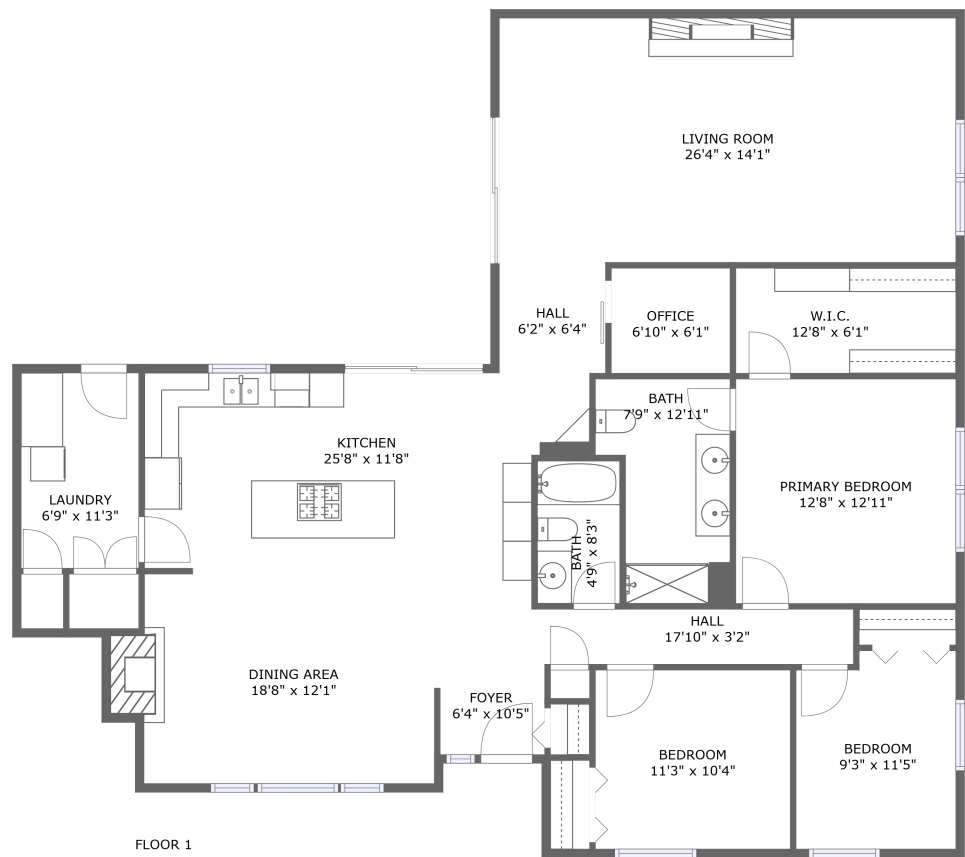




Home report


17 South Cypress Drive, Bristol, Kendall County, Illinois, United States, 60512





Property summary


**0** Garages


**3** Bedrooms

**2** Bathrooms

**0** Half baths

**1** Floors

**1,946** Gross living area sqft

**1,946** Total sqft

Home report

17 South Cypress Drive, Bristol, Kendall County, Illinois, United States, 60512



Room dimensions

Floor 1

Total sqft: 1946

Living area: 1946

#		Max Dimensions	sqft	Included
1	Bedroom	9'3" x 11'5"	101 sq. ft	Yes
2	Hall	17'10" x 3'2"	57 sq. ft	Yes
3	Primary Bedroom	12'8" x 12'11"	164 sq. ft	Yes
4	Bath	7'9" x 12'11"	86 sq. ft	Yes
5	Kitchen	25'8" x 11'8"	275 sq. ft	Yes
6	Laundry	6'9" x 11'3"	77 sq. ft	Yes
7	Bedroom	11'3" x 10'4"	116 sq. ft	Yes
8	Office	6'10" x 6'1"	42 sq. ft	Yes
9	Foyer	6'4" x 10'5"	63 sq. ft	Yes
10	W.I.C.	12'8" x 6'1"	77 sq. ft	Yes
11	Dining Area	18'8" x 12'1"	211 sq. ft	Yes

Home report

17 South Cypress Drive, Bristol, Kendall County, Illinois, United States, 60512

#		Max Dimensions	sqft	Included
12	Living Room	26'4" x 14'1"	371 sq. ft	Yes
13	Hall	6'2" x 6'4"	39 sq. ft	Yes
14	Bath	4'9" x 8'3"	39 sq. ft	Yes

1 Floor 1 - Bedroom



Max Dimensions: 9'3" x 11'5"
Calculated Area: 101 sq. ft
Included: Yes

Heated: Yes
Finished: Yes
Enclosed: Yes
Contiguous: Yes
Permitted: Yes
Wet space: No
Addition: No
Conversion: No

2 Floor 1 - Hall



Max Dimensions: 17'10" x 3'2"
Calculated Area: 57 sq. ft
Included: Yes

Heated: Yes
Finished: Yes
Enclosed: Yes
Contiguous: Yes
Permitted: Yes
Wet space: No
Addition: No
Conversion: No

3 Floor 1 - Primary Bedroom



Max Dimensions: 12'8" x 12'11"
Calculated Area: 164 sq. ft
Included: Yes

Heated: Yes
Finished: Yes
Enclosed: Yes
Contiguous: Yes
Permitted: Yes
Wet space: No
Addition: No
Conversion: No

4 Floor 1 - Bath



Max Dimensions: 7'9" x 12'11"
Calculated Area: 86 sq. ft
Included: Yes

Heated: Yes
Finished: Yes
Enclosed: Yes
Contiguous: Yes
Permitted: Yes
Wet space: Yes
Addition: No
Conversion: No

5 Floor 1 - Kitchen



Max Dimensions: 25'8" x 11'8"
Calculated Area: 275 sq. ft
Included: Yes

Heated: Yes
Finished: Yes
Enclosed: Yes
Contiguous: Yes
Permitted: Yes
Wet space: No
Addition: No
Conversion: No

6 Floor 1 - Laundry



Max Dimensions: 6'9" x 11'3"
Calculated Area: 77 sq. ft
Included: Yes

Heated: Yes
Finished: Yes
Enclosed: Yes
Contiguous: Yes
Permitted: Yes
Wet space: No
Addition: No
Conversion: No

7 Floor 1 - Bedroom



Max Dimensions: 11'3" x 10'4"
Calculated Area: 116 sq. ft
Included: Yes

Heated: Yes
Finished: Yes
Enclosed: Yes
Contiguous: Yes
Permitted: Yes
Wet space: No
Addition: No
Conversion: No

8 Floor 1 - Office



Max Dimensions: 6'10" x 6'1"
Calculated Area: 42 sq. ft
Included: Yes

Heated: Yes
Finished: Yes
Enclosed: Yes
Contiguous: Yes
Permitted: Yes
Wet space: No
Addition: No
Conversion: No

9 Floor 1 - Foyer



Max Dimensions: 6'4" x 10'5"
Calculated Area: 63 sq. ft
Included: Yes

Heated: Yes
Finished: Yes
Enclosed: Yes
Contiguous: Yes
Permitted: Yes
Wet space: No
Addition: No
Conversion: No

10 Floor 1 - W.I.C.



Max Dimensions: 12'8" x 6'1"
Calculated Area: 77 sq. ft
Included: Yes

Heated: Yes
Finished: Yes
Enclosed: Yes
Contiguous: Yes
Permitted: Yes
Wet space: No
Addition: No
Conversion: No

11 Floor 1 - Dining Area



Max Dimensions: 18'8" x 12'1"
Calculated Area: 211 sq. ft
Included: Yes

Heated: Yes
Finished: Yes
Enclosed: Yes
Contiguous: Yes
Permitted: Yes
Wet space: No
Addition: No
Conversion: No

17 South Cypress Drive, Bristol, Kendall County, Illinois, United States, 60512

12 Floor 1 - Living Room



Max Dimensions: 26'4" x 14'1"
Calculated Area: 371 sq. ft
Included: Yes

Heated: Yes
Finished: Yes
Enclosed: Yes
Contiguous: Yes
Permitted: Yes
Wet space: No
Addition: No
Conversion: No

13 Floor 1 - Hall



Max Dimensions: 6'2" x 6'4"
Calculated Area: 39 sq. ft
Included: Yes

Heated: Yes
Finished: Yes
Enclosed: Yes
Contiguous: Yes
Permitted: Yes
Wet space: No
Addition: No
Conversion: No

14 Floor 1 - Bath



Max Dimensions: 4'9" x 8'3"
Calculated Area: 39 sq. ft
Included: Yes

Heated: Yes
Finished: Yes
Enclosed: Yes
Contiguous: Yes
Permitted: Yes
Wet space: Yes
Addition: No
Conversion: No