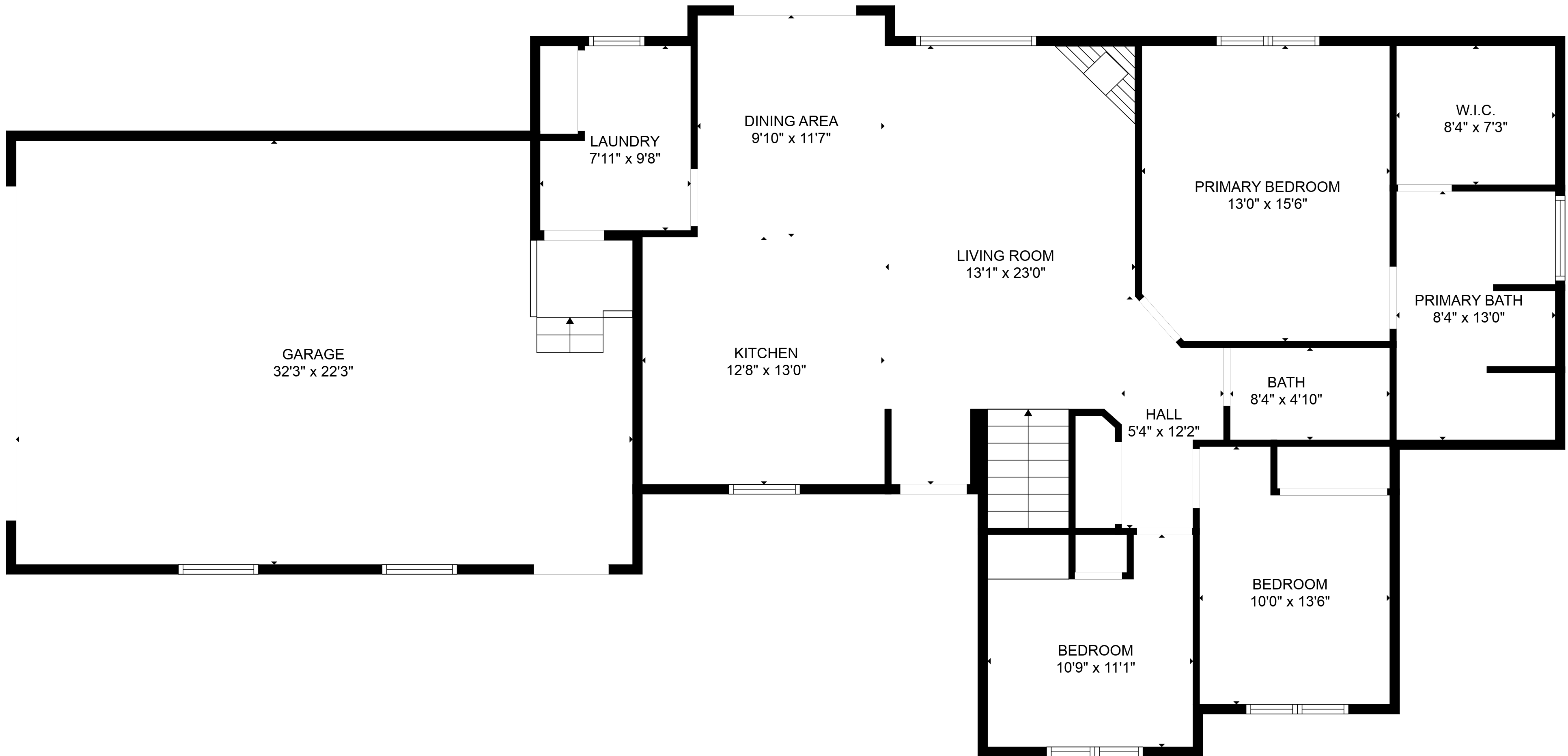
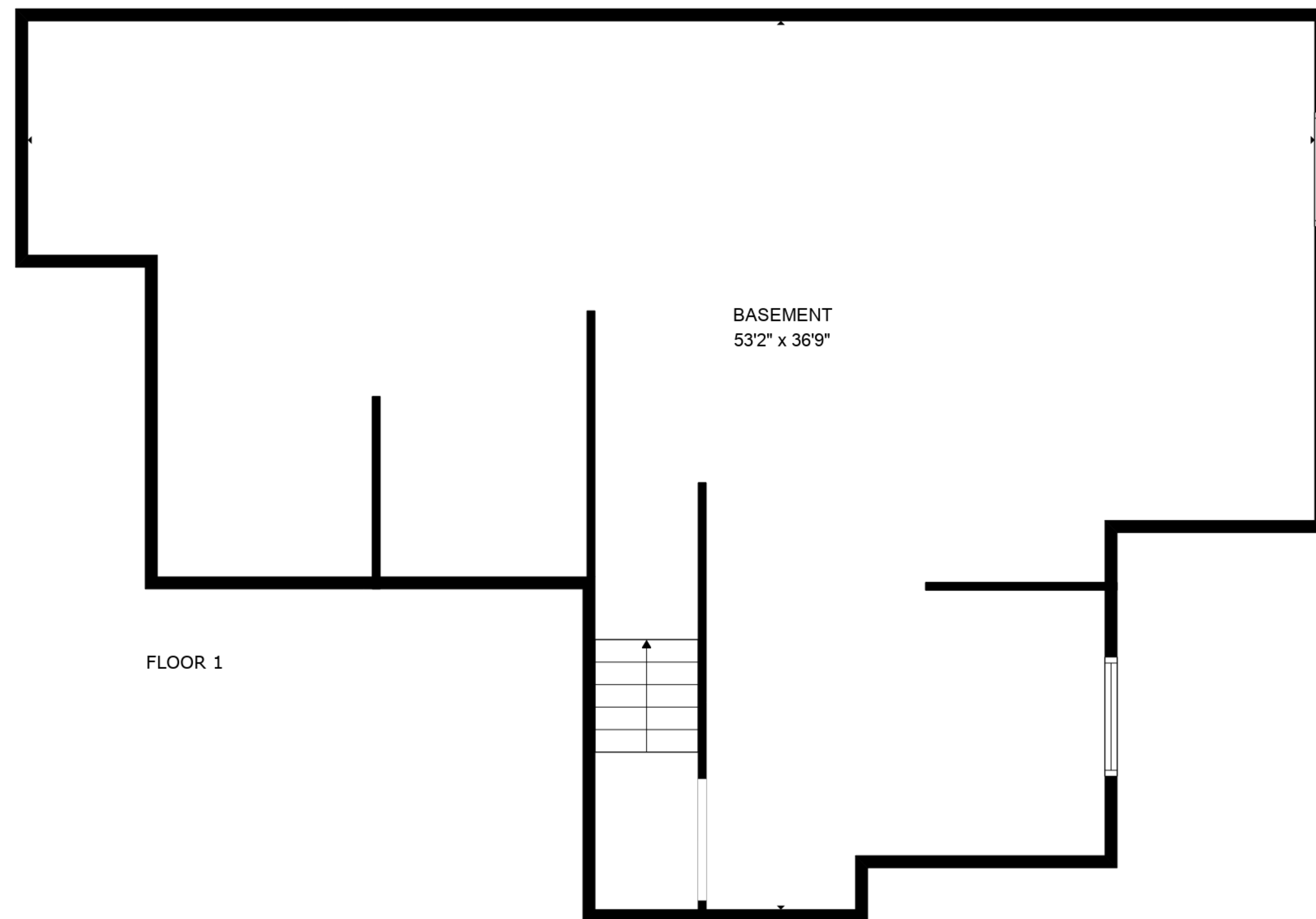
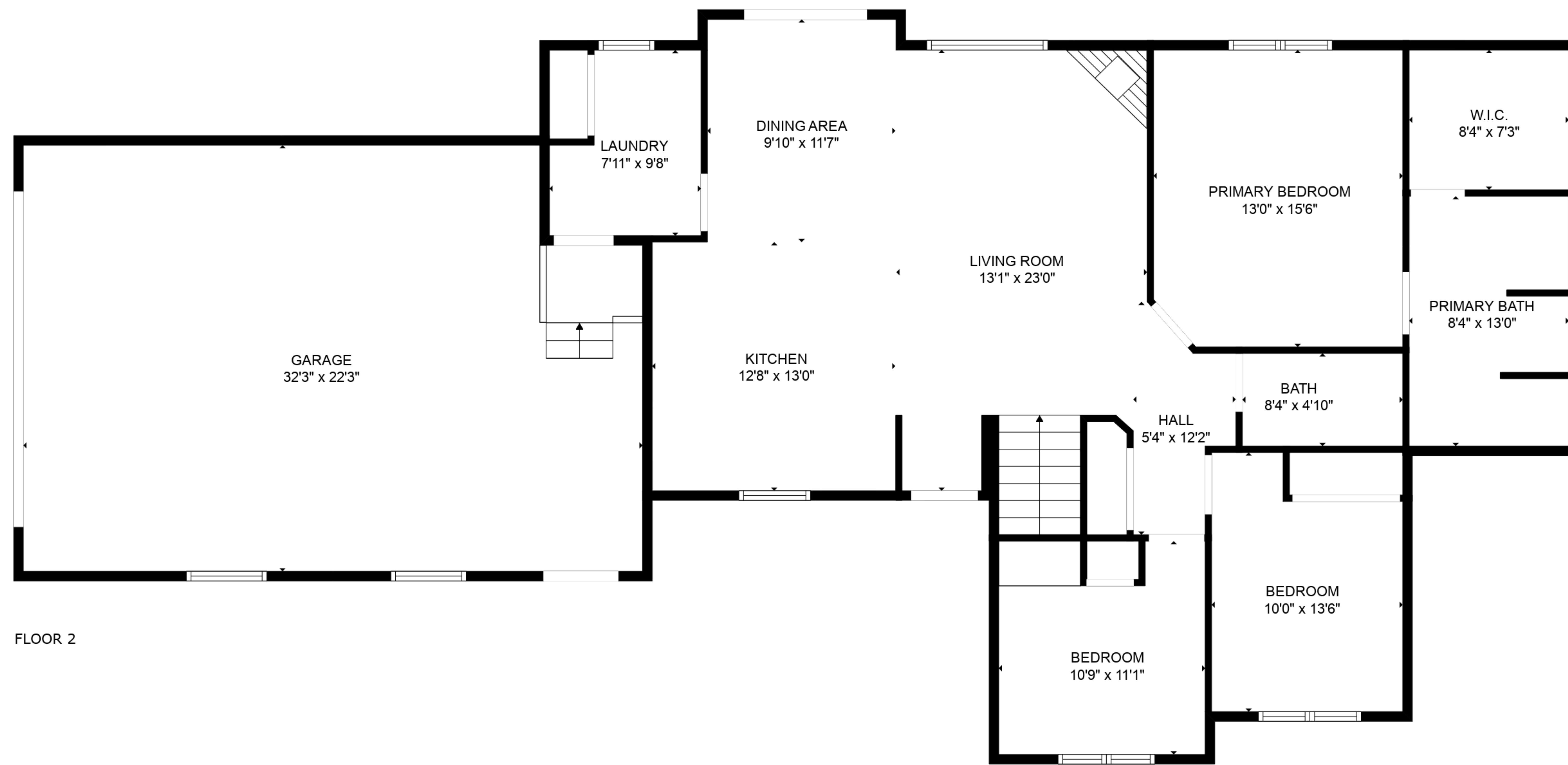


BASEMENT
53'2" x 36'9"

TOTAL: 1413 sq. ft
BELOW GROUND: 0 sq. ft, FLOOR 2: 1413 sq. ft
EXCLUDED AREAS: BASEMENT: 1396 sq. ft, GARAGE: 689 sq. ft



TOTAL: 1413 sq. ft
BELOW GROUND: 0 sq. ft, FLOOR 2: 1413 sq. ft
EXCLUDED AREAS: BASEMENT: 1396 sq. ft, GARAGE: 689 sq. ft



TOTAL: 1413 sq. ft
 BELOW GROUND: 0 sq. ft, FLOOR 2: 1413 sq. ft
 EXCLUDED AREAS: BASEMENT: 1396 sq. ft, GARAGE: 689 sq. ft