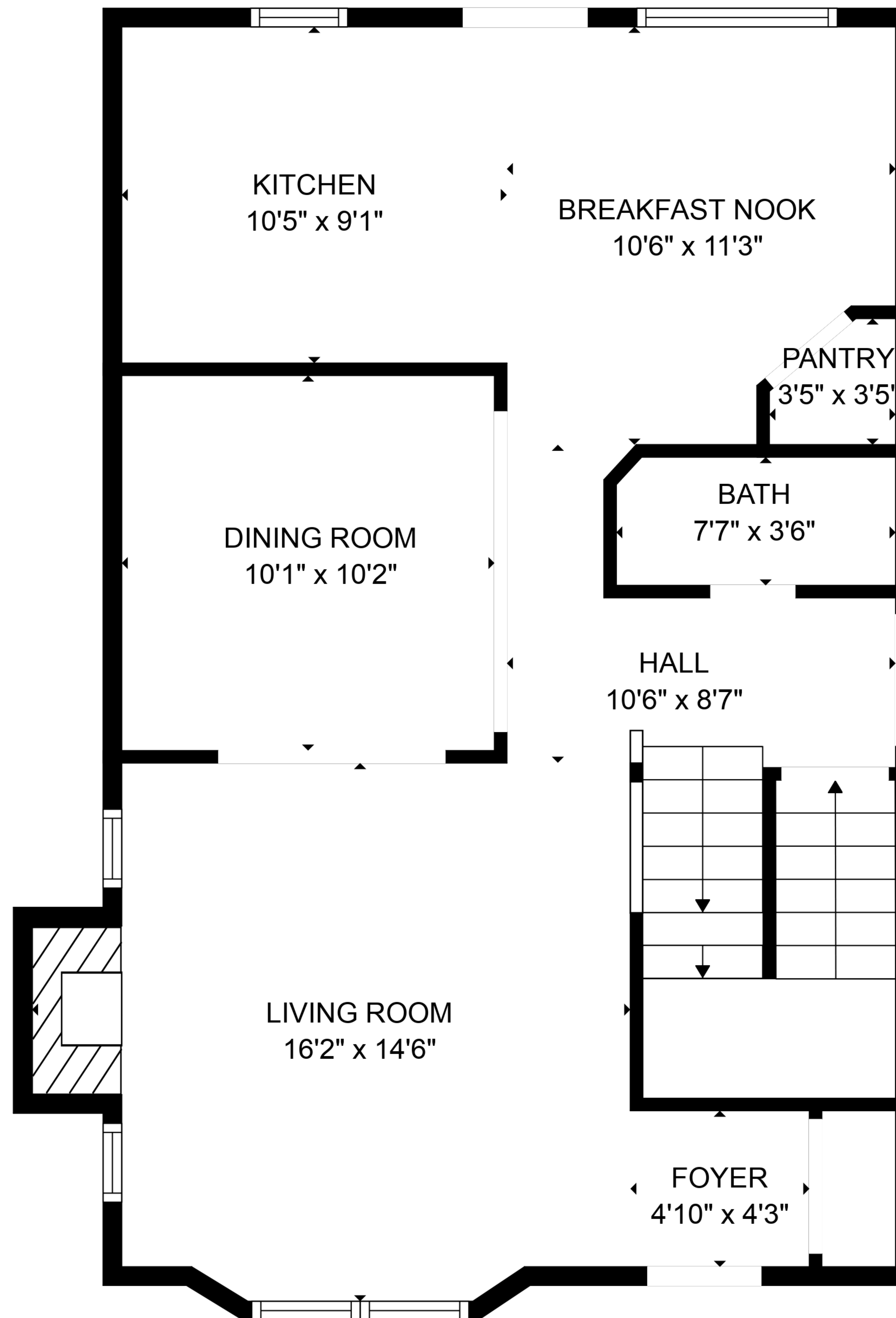


BASEMENT
20'11" x 33'0"

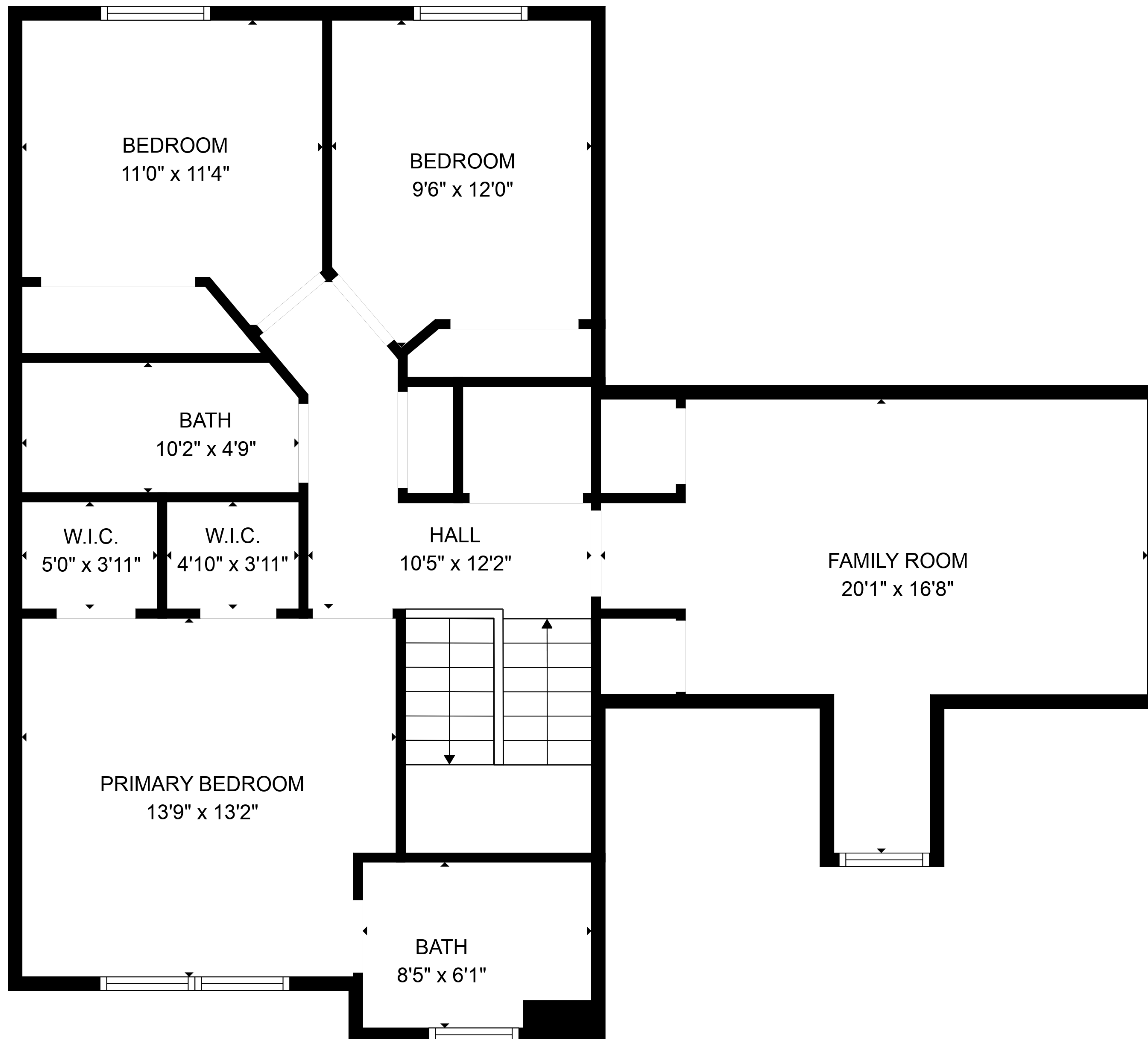
HALL
6'10" x 12'6"

TOTAL: 1799 sq. ft
BELOW GROUND: 95 sq. ft, FLOOR 2: 711 sq. ft, FLOOR 3: 993 sq. ft
EXCLUDED AREAS: BASEMENT: 595 sq. ft, FIREPLACE: 13 sq. ft



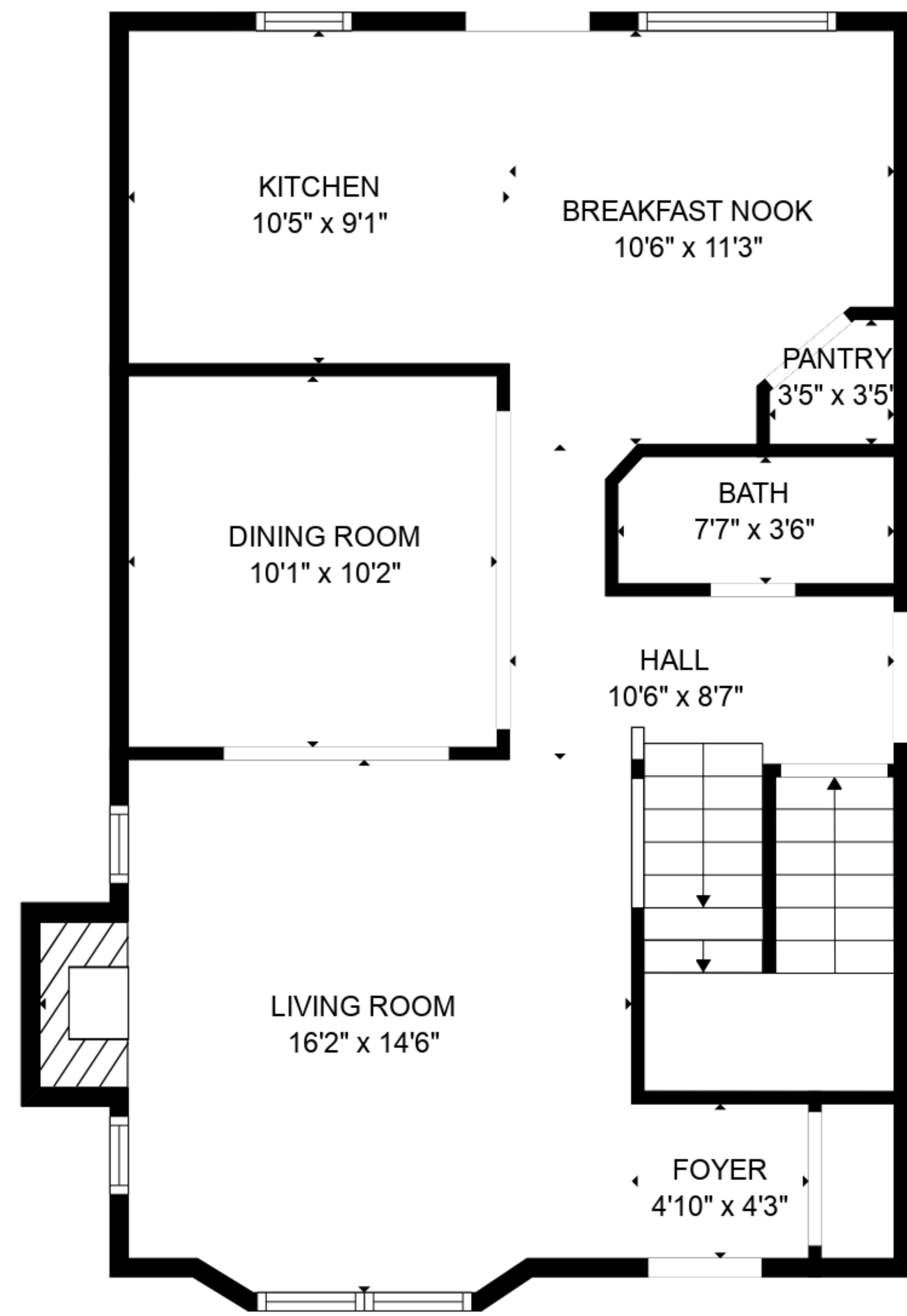
TOTAL: 1799 sq. ft

BELOW GROUND: 95 sq. ft, FLOOR 2: 711 sq. ft, FLOOR 3: 993 sq. ft
 EXCLUDED AREAS: BASEMENT: 595 sq. ft, FIREPLACE: 13 sq. ft

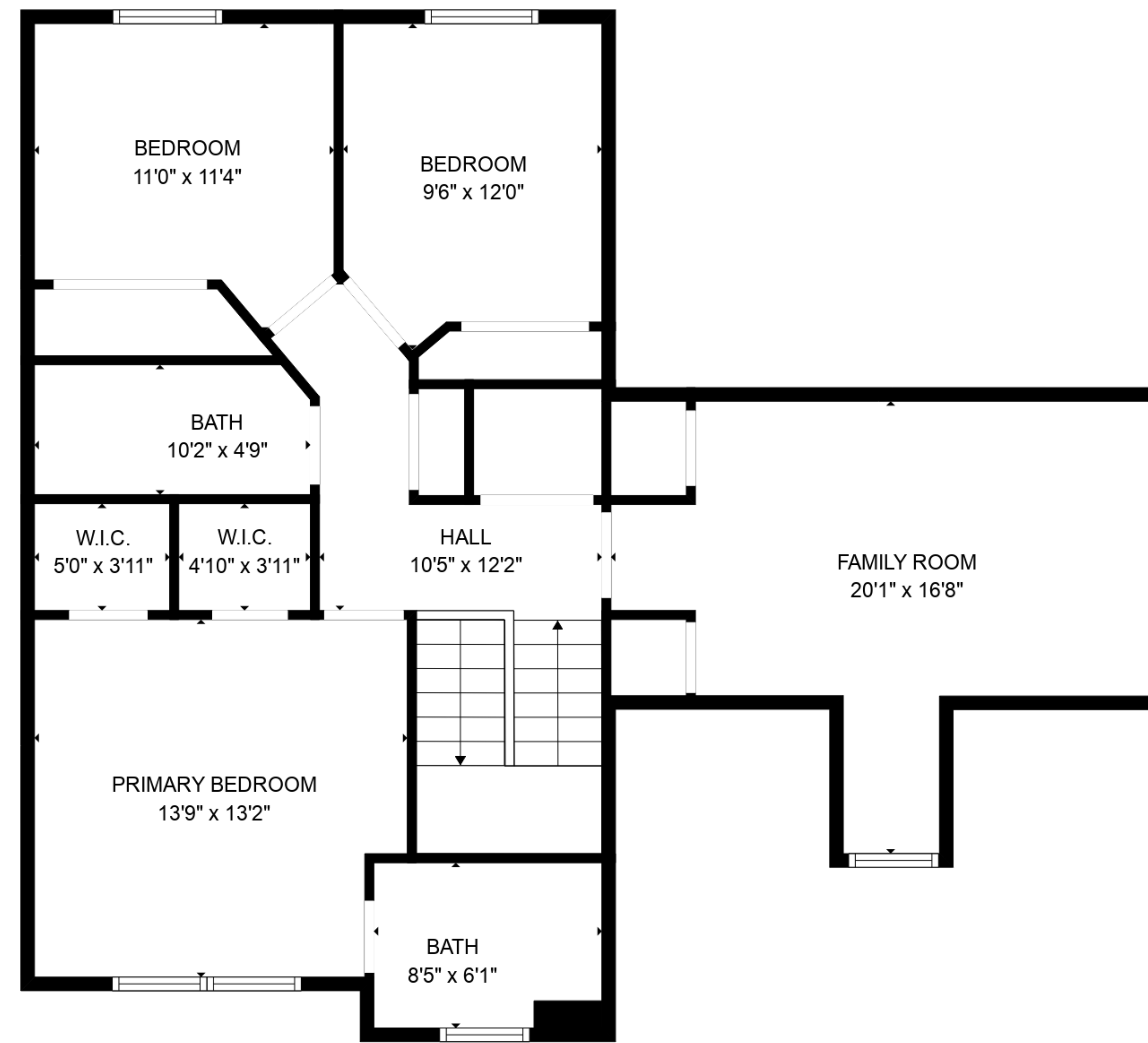


TOTAL: 1799 sq. ft

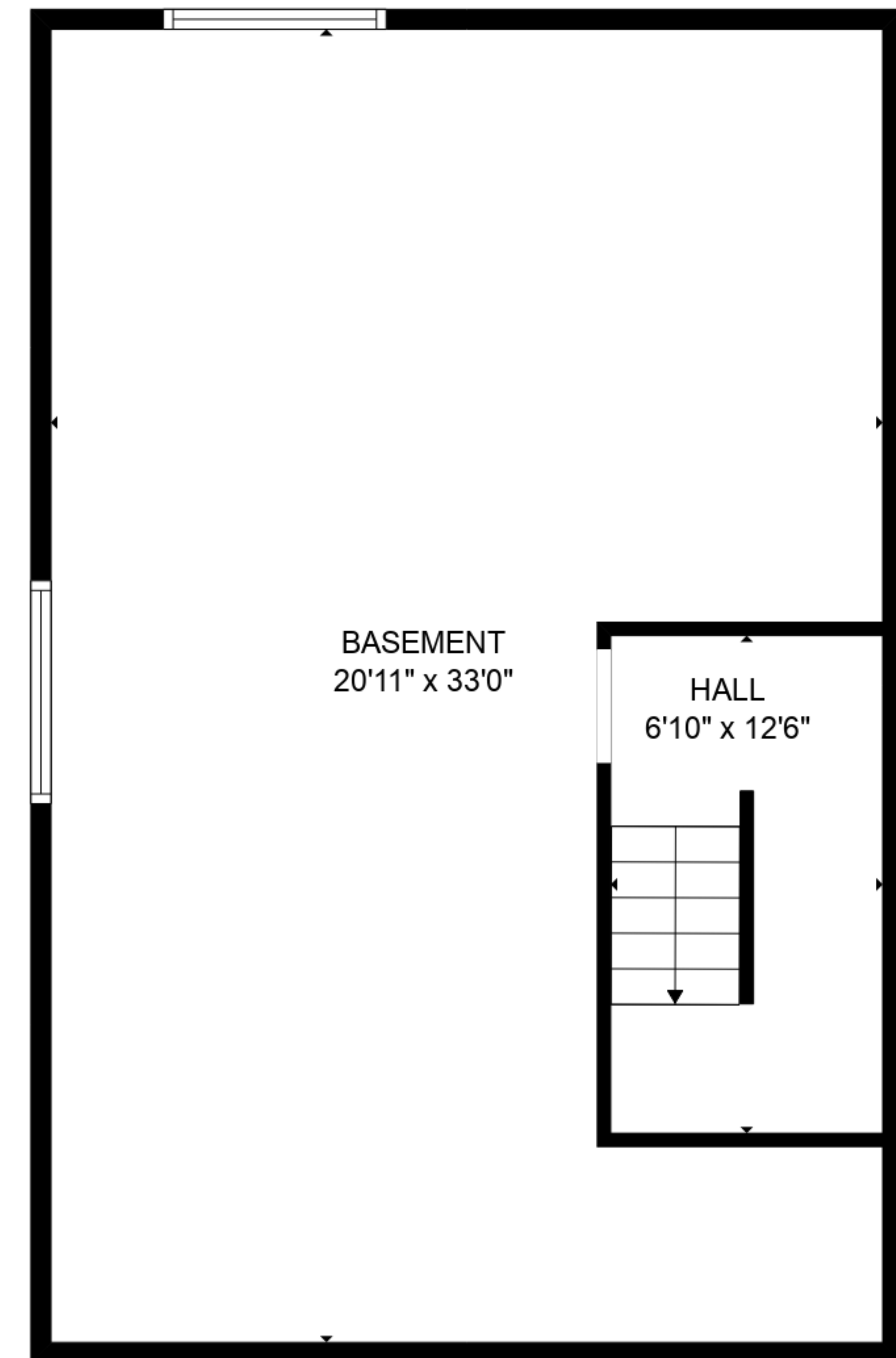
BELOW GROUND: 95 sq. ft, FLOOR 2: 711 sq. ft, FLOOR 3: 993 sq. ft
 EXCLUDED AREAS: BASEMENT: 595 sq. ft, FIREPLACE: 13 sq. ft



FLOOR 2



FLOOR 3



FLOOR 1

TOTAL: 1799 sq. ft
 BELOW GROUND: 95 sq. ft, FLOOR 2: 711 sq. ft, FLOOR 3: 993 sq. ft
 EXCLUDED AREAS: BASEMENT: 595 sq. ft, FIREPLACE: 13 sq. ft