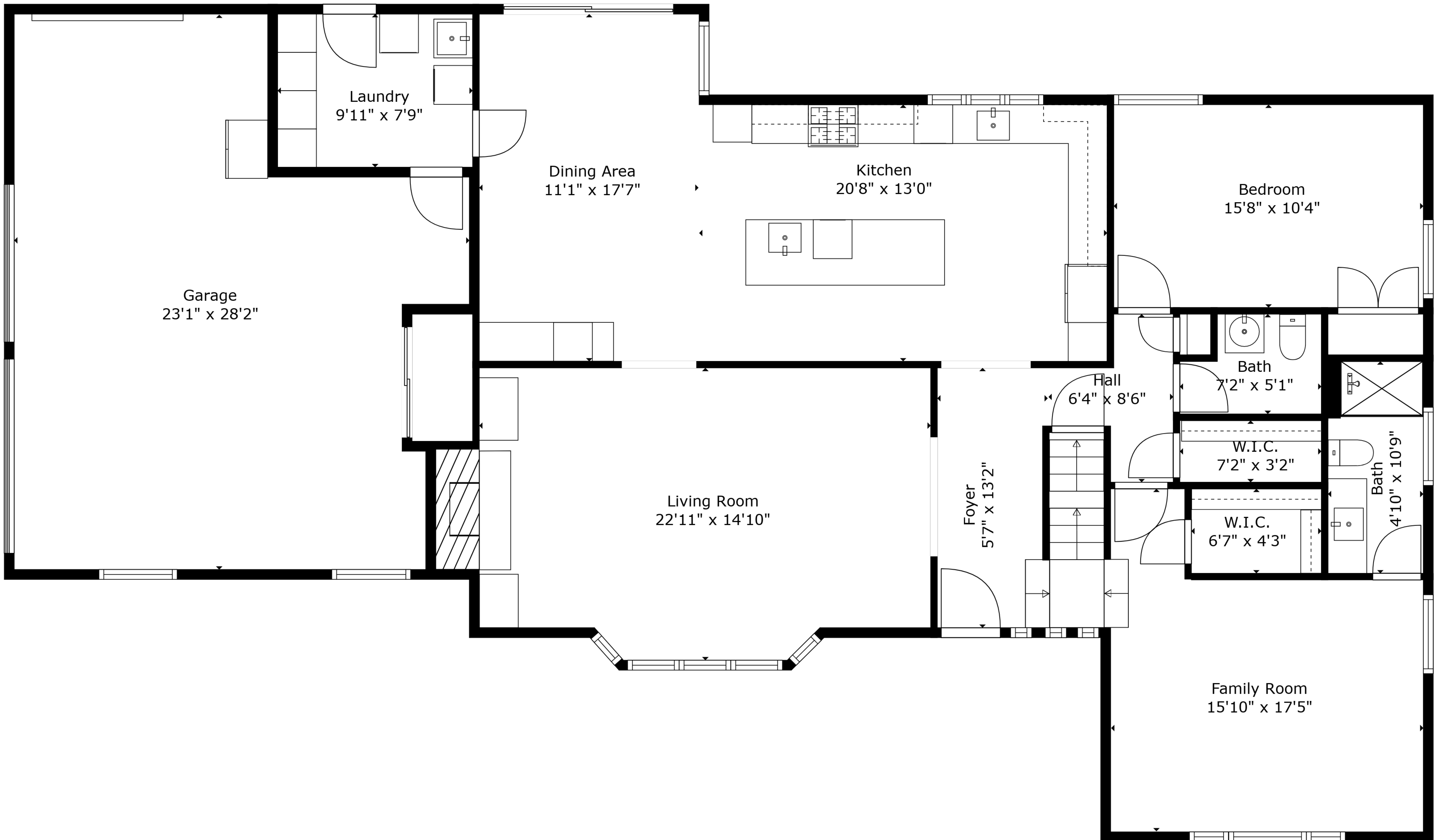


**TOTAL: 3354 sq. ft**  
BELOW GROUND: 864 sq. ft, FLOOR 2: 1619 sq. ft, FLOOR 3: 871 sq. ft  
EXCLUDED AREAS: BASEMENT: 622 sq. ft, GARAGE: 527 sq. ft, LOW CEILING: 140 sq. ft,  
ATTIC: 104 sq. ft, WALLS: 302 sq. ft

Floor Plans Are Intended To Give a General Indication Of The Property Layout. Sizes And Dimensions Are Estimate, Actual May Vary.



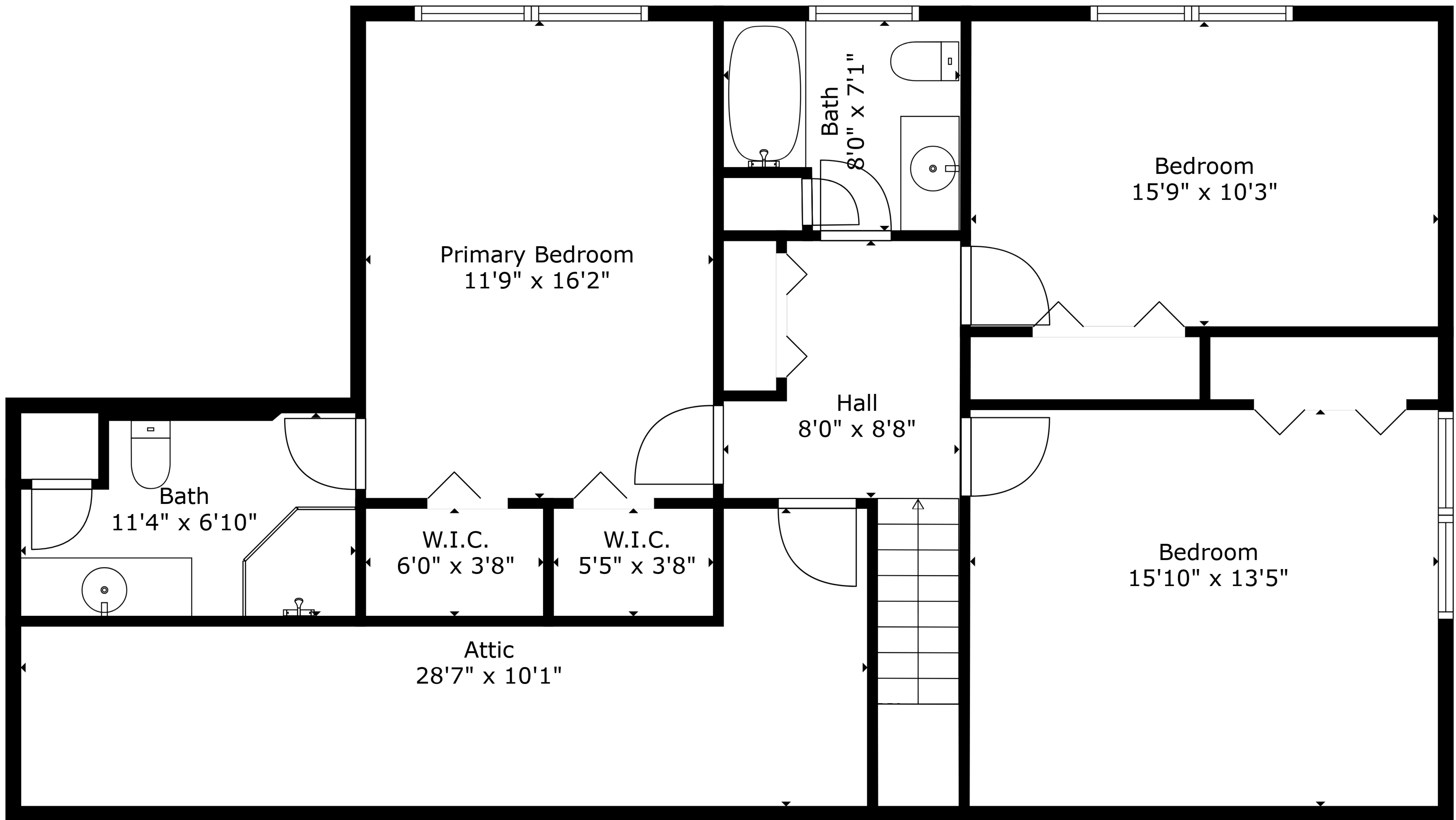


**TOTAL: 3354 sq. ft**  
BELOW GROUND: 864 sq. ft, FLOOR 2: 1619 sq. ft, FLOOR 3: 871 sq. ft  
EXCLUDED AREAS: BASEMENT: 622 sq. ft, GARAGE: 527 sq. ft, LOW CEILING: 140 sq. ft,  
ATTIC: 104 sq. ft, WALLS: 302 sq. ft

Floor Plans Are Intended To Give a General Indication Of The Property Layout. Sizes And Dimensions Are Estimate, Actual May Vary.





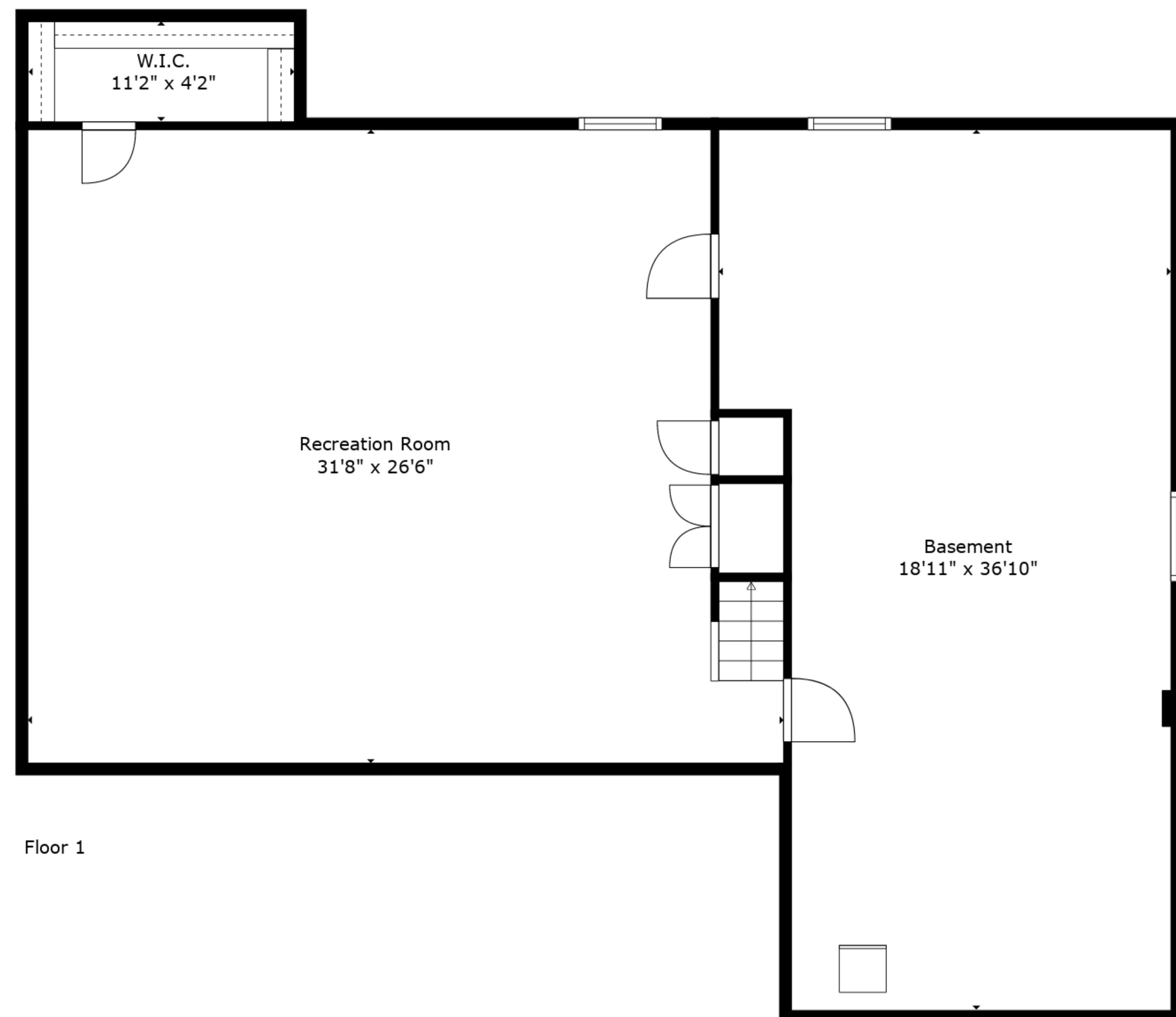
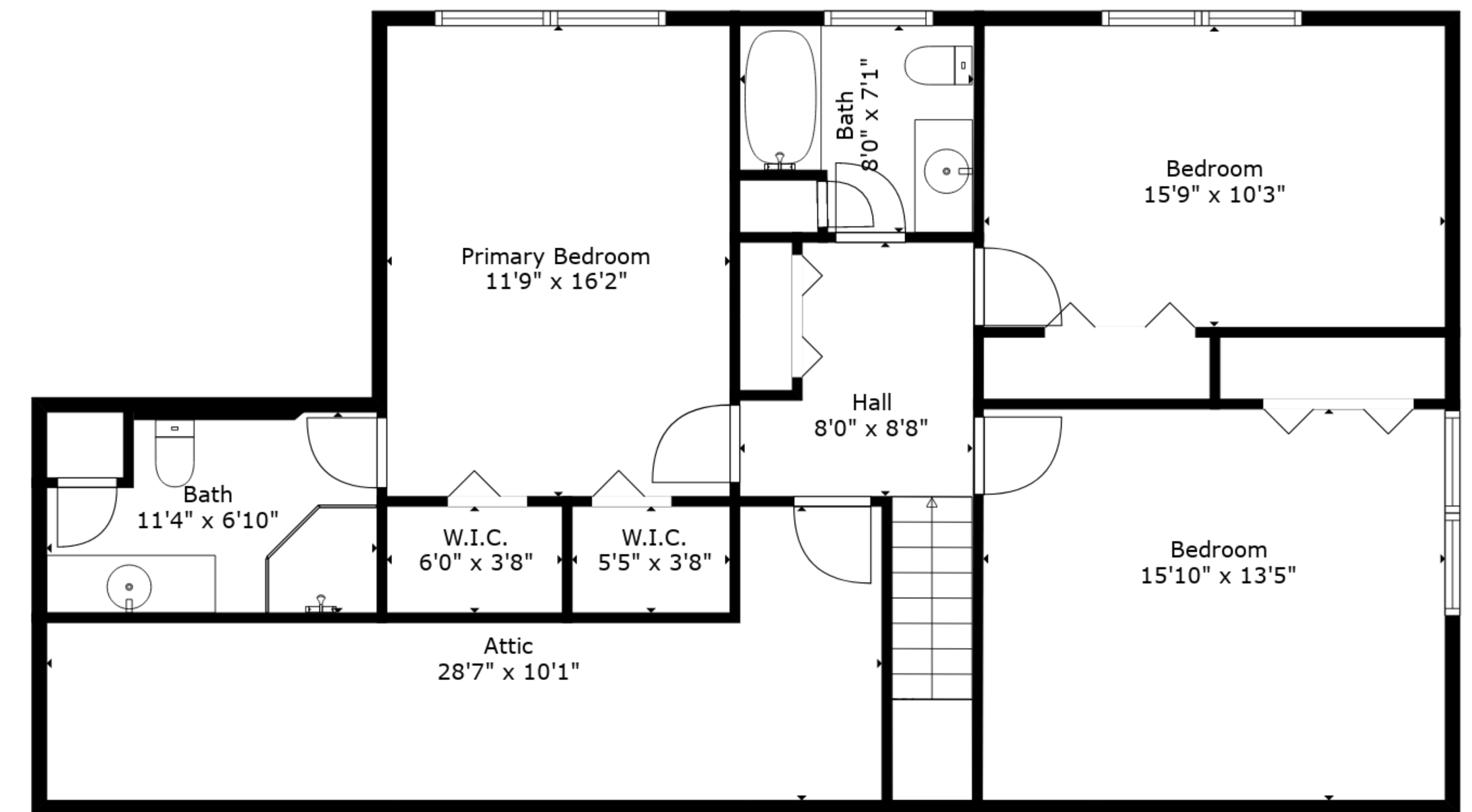
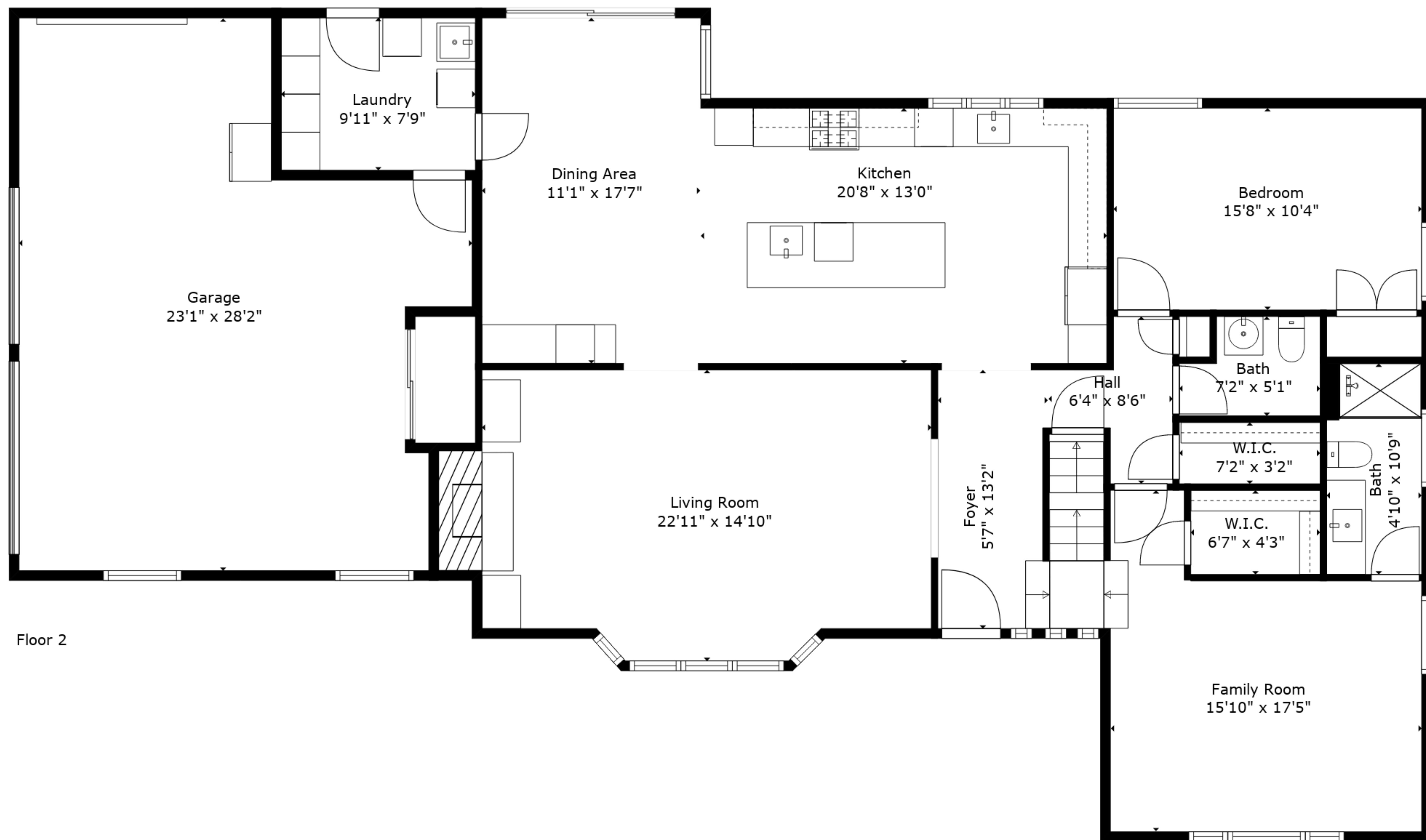


**TOTAL: 3354 sq. ft**  
 BELOW GROUND: 864 sq. ft, FLOOR 2: 1619 sq. ft, FLOOR 3: 871 sq. ft  
 EXCLUDED AREAS: BASEMENT: 622 sq. ft, GARAGE: 527 sq. ft, LOW CEILING: 140 sq. ft,  
 ATTIC: 104 sq. ft, WALLS: 302 sq. ft

Floor Plans Are Intended To Give a General Indication Of The Property Layout. Sizes And Dimensions Are Estimate, Actual May Vary.







**TOTAL: 3354 sq. ft**  
 BELOW GROUND: 864 sq. ft, FLOOR 2: 1619 sq. ft, FLOOR 3: 871 sq. ft  
 EXCLUDED AREAS: BASEMENT: 622 sq. ft, GARAGE: 527 sq. ft, LOW CEILING: 140 sq. ft,  
 ATTIC: 104 sq. ft, WALLS: 302 sq. ft

Floor Plans Are Intended To Give a General Indication Of The Property Layout. Sizes And Dimensions Are Estimate, Actual May Vary.

