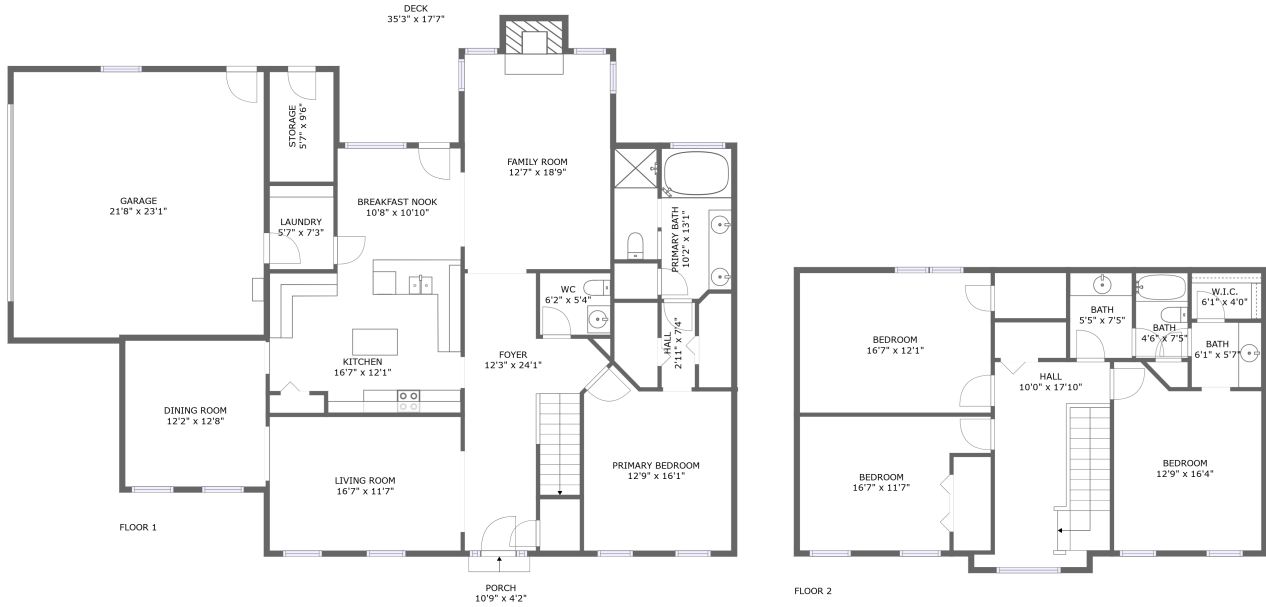



# 110 Lake Crest Circle, Madison, Madison County, Alabama, United States, 35758



## Property summary


 **1** Garages

 **4** Bedrooms

 **2** Bathrooms

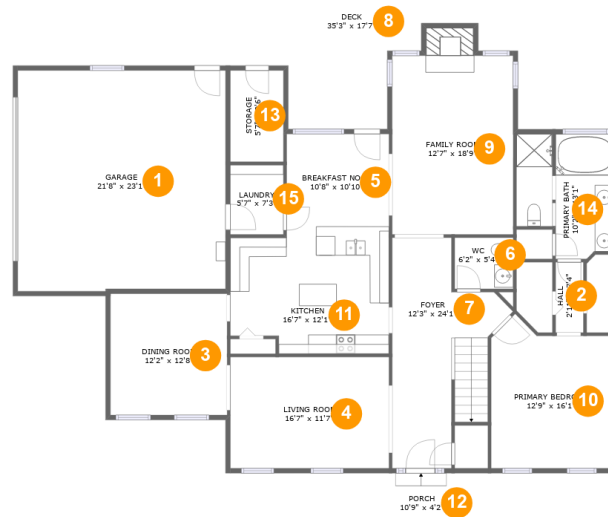
 **1** Half baths

 **2** Floors

 **2,779** Gross living area sqft

 **3,864** Total sqft

# 110 Lake Crest Circle, Madison, Madison County, Alabama, United States, 35758



## Room dimensions

### Floor 1

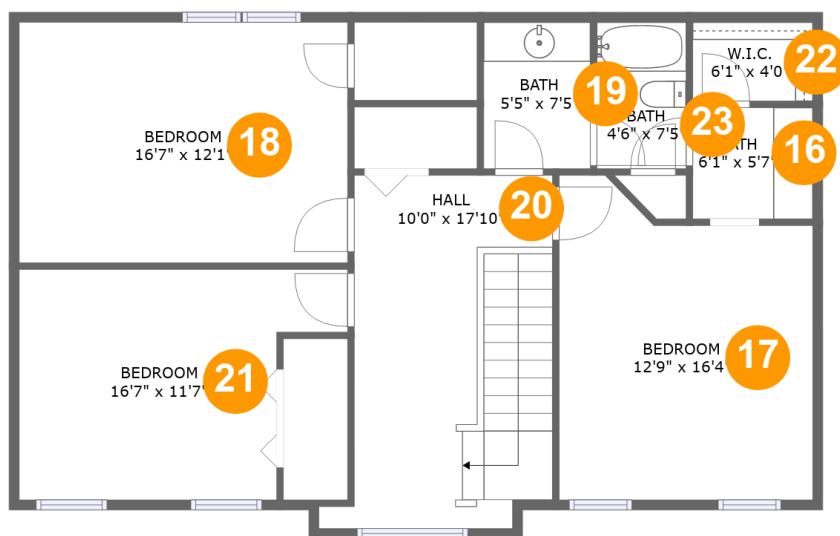
Total sqft: 2820 Living area: 1735

#		Dimensions	sqft	Counted as living area
1	Garage	21'8" x 23'1"	497 sq. ft	No
2	Hall	2'11" x 7'4"	21 sq. ft	Yes
3	Dining Room	12'2" x 12'8"	154 sq. ft	Yes
4	Living Room	16'7" x 11'7"	192 sq. ft	Yes
5	Nook	10'8" x 10'10"	116 sq. ft	Yes
6	Bath	6'2" x 5'4"	33 sq. ft	Yes
7	Entry	12'3" x 24'1"	206 sq. ft	Yes
8	Outdoor	35'3" x 17'7"	419 sq. ft	No
9	Living Room	12'7" x 18'9"	250 sq. ft	Yes
10	Bedroom	12'9" x 16'1"	182 sq. ft	Yes
11	Kitchen	16'7" x 12'1"	191 sq. ft	Yes

**110 Lake Crest Circle, Madison, Madison County,  
Alabama, United States, 35758**

#		Dimensions	sqft	Counted as living area
12	Outdoor	10'9" x 4'2"	60 sq. ft	No
13	Storage	5'7" x 9'6"	53 sq. ft	No
14	Bath	10'2" x 13'1"	114 sq. ft	Yes
15	Utility	5'7" x 7'3"	40 sq. ft	Yes

# 110 Lake Crest Circle, Madison, Madison County, Alabama, United States, 35758



## Room dimensions

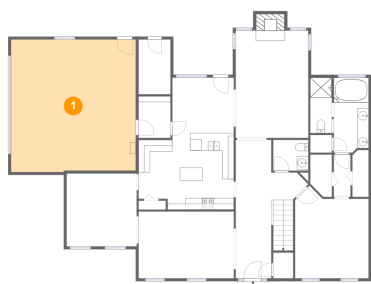
Floor 2

Total sqft: 1044 Living area: 1044

#		Dimensions	sqft	Counted as living area
16	Bath	6'1" x 5'7"	34 sq. ft	Yes
17	Bedroom	12'9" x 16'4"	186 sq. ft	Yes
18	Bedroom	16'7" x 12'1"	201 sq. ft	Yes
19	Bath	5'5" x 7'5"	40 sq. ft	Yes
20	Hall	10'0" x 17'10"	177 sq. ft	Yes
21	Bedroom	16'7" x 11'7"	162 sq. ft	Yes
22	Cl	6'1" x 4'0"	24 sq. ft	Yes
23	Bath	4'6" x 7'5"	33 sq. ft	Yes

# 110 Lake Crest Circle, Madison, Madison County, Alabama, United States, 35758

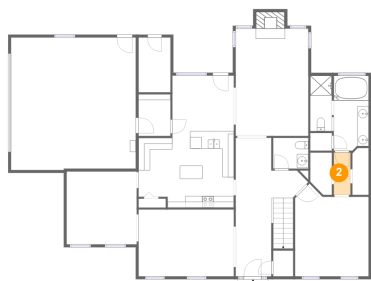
## 1 Floor 1 - Garage



Dimensions: 21'8" x 23'1"  
Area: 497 sq. ft  
Counted as living area: No

Heated: No  
Finished: No  
Enclosed: Yes  
Contiguous: Yes  
Permitted: Yes  
Wet space: No  
Addition: No  
Conversion: No

## 2 Floor 1 - Hall

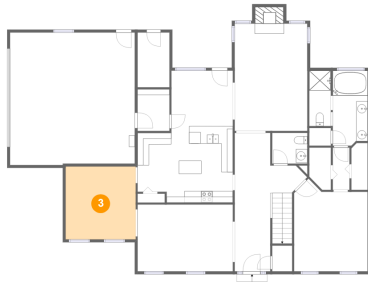


Dimensions: 2'11" x 7'4"  
Area: 21 sq. ft  
Counted as living area: Yes

Heated: Yes  
Finished: Yes  
Enclosed: Yes  
Contiguous: Yes  
Permitted: Yes  
Wet space: No  
Addition: No  
Conversion: No

**110 Lake Crest Circle, Madison, Madison County,  
Alabama, United States, 35758**

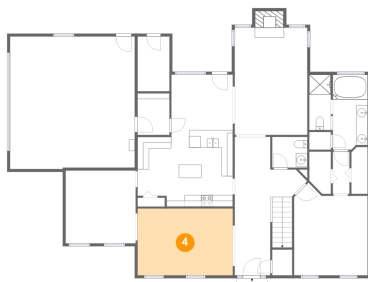
**3 Floor 1 - Dining Room**



Dimensions: 12'2" x 12'8"  
Area: 154 sq. ft  
Counted as living area: Yes

Heated: Yes  
Finished: Yes  
Enclosed: Yes  
Contiguous: Yes  
Permitted: Yes  
Wet space: No  
Addition: No  
Conversion: No

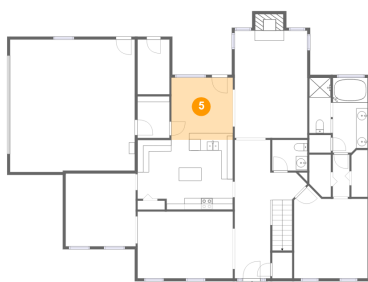
**4 Floor 1 - Living Room**



Dimensions: 16'7" x 11'7"  
Area: 192 sq. ft  
Counted as living area: Yes

Heated: Yes  
Finished: Yes  
Enclosed: Yes  
Contiguous: Yes  
Permitted: Yes  
Wet space: No  
Addition: No  
Conversion: No

**5 Floor 1 - Nook**



Dimensions: 10'8" x 10'10"  
Area: 116 sq. ft  
Counted as living area: Yes

Heated: Yes  
Finished: Yes  
Enclosed: Yes  
Contiguous: Yes  
Permitted: Yes  
Wet space: No  
Addition: No  
Conversion: No

# 110 Lake Crest Circle, Madison, Madison County, Alabama, United States, 35758

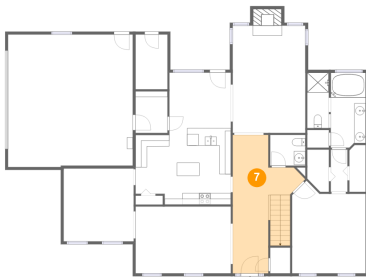
## 6 Floor 1 - Bath



Dimensions: 6'2" x 5'4"  
Area: 33 sq. ft  
Counted as living area: Yes

Heated: Yes  
Finished: Yes  
Enclosed: Yes  
Contiguous: Yes  
Permitted: Yes  
Wet space: Yes  
Addition: No  
Conversion: No

## 7 Floor 1 - Entry



Dimensions: 12'3" x 24'1"  
Area: 206 sq. ft  
Counted as living area: Yes

Heated: Yes  
Finished: Yes  
Enclosed: Yes  
Contiguous: Yes  
Permitted: Yes  
Wet space: No  
Addition: No  
Conversion: No

## 8 Floor 1 - Outdoor

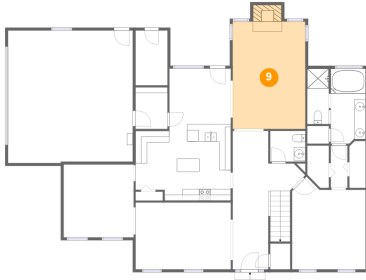


Dimensions: 35'3" x 17'7"  
Area: 419 sq. ft  
Counted as living area: No

Heated: No  
Finished: Yes  
Enclosed: No  
Contiguous: Yes  
Permitted: Yes  
Wet space: No  
Addition: No  
Conversion: No

# 110 Lake Crest Circle, Madison, Madison County, Alabama, United States, 35758

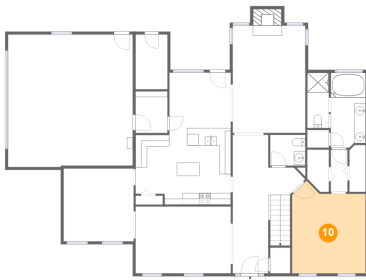
## 9 Floor 1 - Living Room



Dimensions: 12'7" x 18'9"  
Area: 250 sq. ft  
Counted as living area: Yes

Heated: Yes  
Finished: Yes  
Enclosed: Yes  
Contiguous: Yes  
Permitted: Yes  
Wet space: No  
Addition: No  
Conversion: No

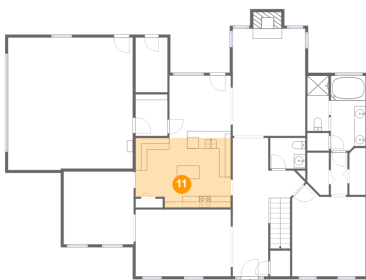
## 10 Floor 1 - Bedroom



Dimensions: 12'9" x 16'1"  
Area: 182 sq. ft  
Counted as living area: Yes

Heated: Yes  
Finished: Yes  
Enclosed: Yes  
Contiguous: Yes  
Permitted: Yes  
Wet space: No  
Addition: No  
Conversion: No

## 11 Floor 1 - Kitchen



Dimensions: 16'7" x 12'1"  
Area: 191 sq. ft  
Counted as living area: Yes

Heated: Yes  
Finished: Yes  
Enclosed: Yes  
Contiguous: Yes  
Permitted: Yes  
Wet space: No  
Addition: No  
Conversion: No



# 110 Lake Crest Circle, Madison, Madison County, Alabama, United States, 35758

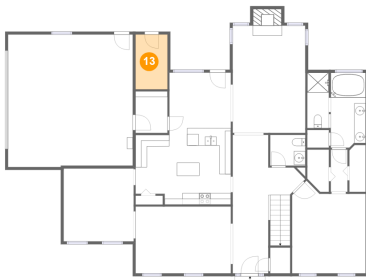
## 12 Floor 1 - Outdoor



Dimensions: 10'9" x 4'2"  
Area: 60 sq. ft  
Counted as living area: No

Heated: No  
Finished: Yes  
Enclosed: No  
Contiguous: Yes  
Permitted: Yes  
Wet space: No  
Addition: No  
Conversion: No

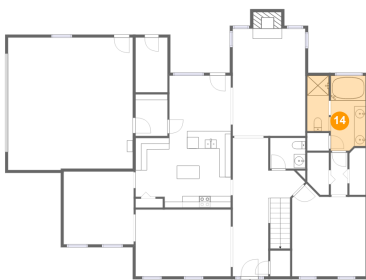
## 13 Floor 1 - Storage



Dimensions: 5'7" x 9'6"  
Area: 53 sq. ft  
Counted as living area: No

Heated: No  
Finished: No  
Enclosed: No  
Contiguous: Yes  
Permitted: Yes  
Wet space: No  
Addition: No  
Conversion: No

## 14 Floor 1 - Bath

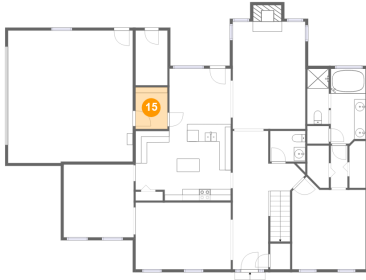


Dimensions: 10'2" x 13'1"  
Area: 114 sq. ft  
Counted as living area: Yes

Heated: Yes  
Finished: Yes  
Enclosed: Yes  
Contiguous: Yes  
Permitted: Yes  
Wet space: Yes  
Addition: No  
Conversion: No

**110 Lake Crest Circle, Madison, Madison County,  
Alabama, United States, 35758**

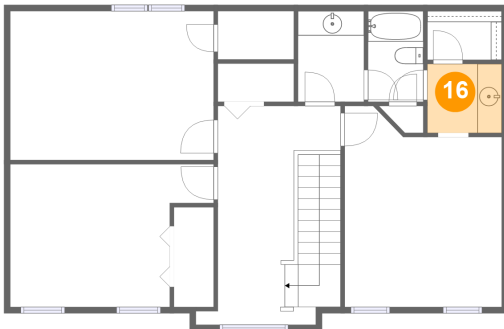
### 15 Floor 1 - Utility



Dimensions: 5'7" x 7'3"  
Area: 40 sq. ft  
Counted as living area: Yes

Heated: Yes  
Finished: Yes  
Enclosed: Yes  
Contiguous: Yes  
Permitted: Yes  
Wet space: No  
Addition: No  
Conversion: No

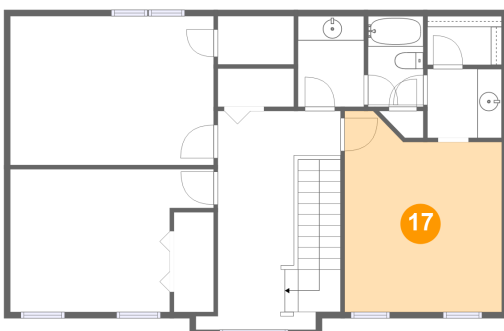
### 16 Floor 2 - Bath



Dimensions: 6'1" x 5'7"  
Area: 34 sq. ft  
Counted as living area: Yes

Heated: Yes  
Finished: Yes  
Enclosed: Yes  
Contiguous: Yes  
Permitted: Yes  
Wet space: Yes  
Addition: No  
Conversion: No

### 17 Floor 2 - Bedroom

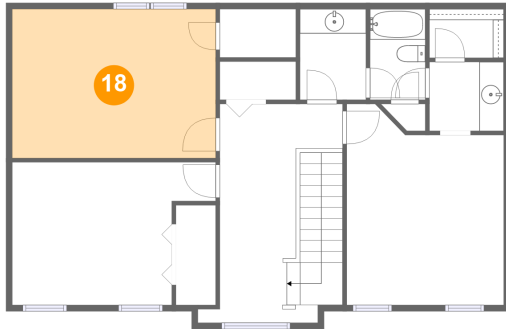


Dimensions: 12'9" x 16'4"  
Area: 186 sq. ft  
Counted as living area: Yes

Heated: Yes  
Finished: Yes  
Enclosed: Yes  
Contiguous: Yes  
Permitted: Yes  
Wet space: No  
Addition: No  
Conversion: No

110 Lake Crest Circle, Madison, Madison County,  
Alabama, United States, 35758

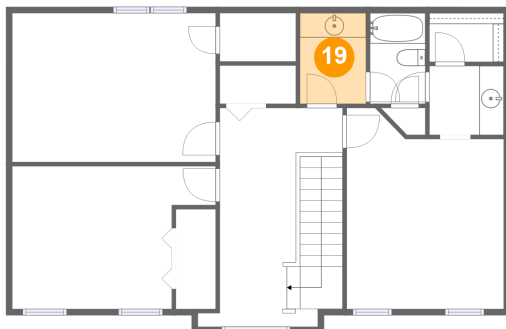
### 18 Floor 2 - Bedroom



Dimensions: 16'7" x 12'1"  
Area: 201 sq. ft  
Counted as living area: Yes

Heated: Yes  
Finished: Yes  
Enclosed: Yes  
Contiguous: Yes  
Permitted: Yes  
Wet space: No  
Addition: No  
Conversion: No

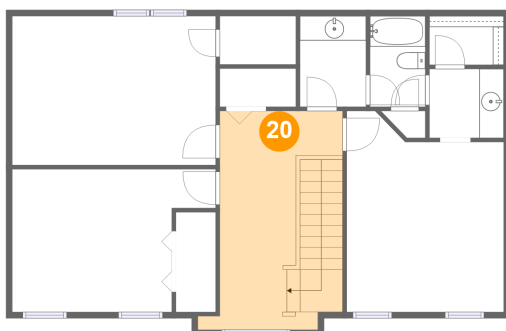
### 19 Floor 2 - Bath



Dimensions: 5'5" x 7'5"  
Area: 40 sq. ft  
Counted as living area: Yes

Heated: Yes  
Finished: Yes  
Enclosed: Yes  
Contiguous: Yes  
Permitted: Yes  
Wet space: Yes  
Addition: No  
Conversion: No

### 20 Floor 2 - Hall

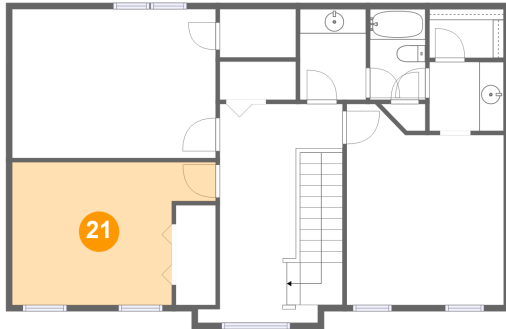


Dimensions: 10'0" x 17'10"  
Area: 177 sq. ft  
Counted as living area: Yes

Heated: Yes  
Finished: Yes  
Enclosed: Yes  
Contiguous: Yes  
Permitted: Yes  
Wet space: No  
Addition: No  
Conversion: No

**110 Lake Crest Circle, Madison, Madison County,  
Alabama, United States, 35758**

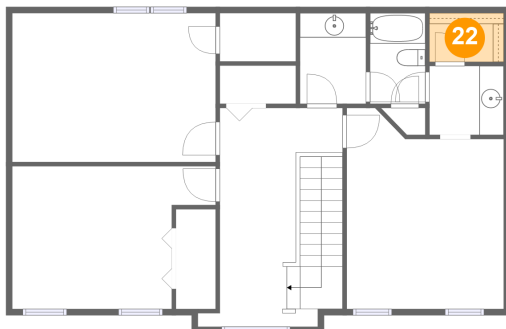
**21 Floor 2 - Bedroom**



**Dimensions:** 16'7" x 11'7"  
**Area:** 162 sq. ft  
**Counted as living area:** Yes

**Heated:** Yes  
**Finished:** Yes  
**Enclosed:** Yes  
**Contiguous:** Yes  
**Permitted:** Yes  
**Wet space:** No  
**Addition:** No  
**Conversion:** No

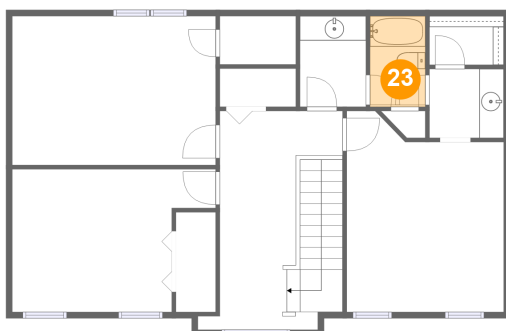
**22 Floor 2 - Cl**



**Dimensions:** 6'1" x 4'0"  
**Area:** 24 sq. ft  
**Counted as living area:** Yes

**Heated:** Yes  
**Finished:** Yes  
**Enclosed:** Yes  
**Contiguous:** Yes  
**Permitted:** Yes  
**Wet space:** No  
**Addition:** No  
**Conversion:** No

**23 Floor 2 - Bath**



**Dimensions:** 4'6" x 7'5"  
**Area:** 33 sq. ft  
**Counted as living area:** Yes

**Heated:** Yes  
**Finished:** Yes  
**Enclosed:** Yes  
**Contiguous:** Yes  
**Permitted:** Yes  
**Wet space:** Yes  
**Addition:** No  
**Conversion:** No