

Home report

628 Greycliffe Lane, Lower Gwynedd, Montgomery County,
Pennsylvania, United States, 19002



Total Area: 3239 sq. ft

Below Ground: 720 sq. ft, Floor 2: 1047 sq. ft, Floor 3: 1179 sq. ft, Floor 4: 293 sq. ft

Excluded: Storage 332 sq. ft, Garage 226 sq. ft, Fireplace 10 sq. ft, Walls: 211 sq. ft

Property summary

 **4** Floors

 **3** Bedrooms

 **2** Bathrooms

Home report

**628 Greycliffe Lane, Lower Gwynedd, Montgomery County,
Pennsylvania, United States, 19002**



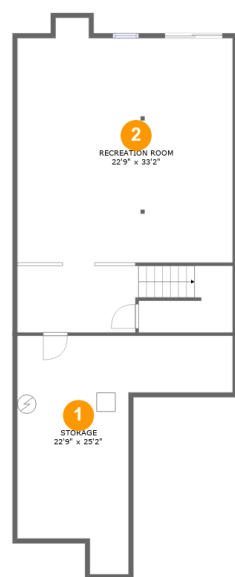
1
Half baths



1
Garages

Home report

628 Greycliffe Lane, Lower Gwynedd, Montgomery County,
Pennsylvania, United States, 19002



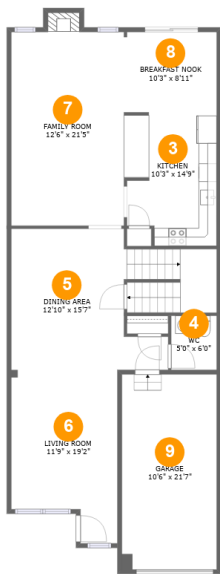
Room dimensions

Floor 1 Below ground Total:720sqft Excluded: 332sqft

#		Max Dimensions	sqft	Included
1	Storage	22'9" x 25'2"	332 sq. ft	No
2	Recreation Room	22'9" x 33'2"	706 sq. ft	Yes

Home report

628 Greycliffe Lane, Lower Gwynedd, Montgomery County,
Pennsylvania, United States, 19002



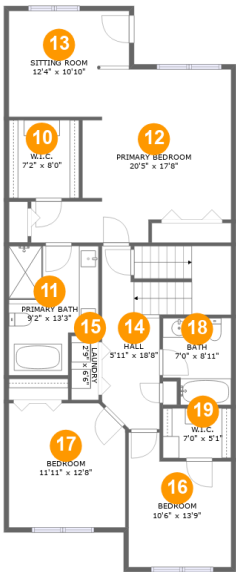
Room dimensions

Floor 2 Total:1047sqft Excluded: 236sqft

#		Max Dimensions	sqft	Included
3	Kitchen	10'3" x 14'9"	142 sq. ft	Yes
4	WC	5'0" x 6'0"	30 sq. ft	Yes
5	Dining Area	12'10" x 15'7"	281 sq. ft	Yes
6	Living Room	11'9" x 19'2"	196 sq. ft	Yes
7	Family Room	12'6" x 21'5"	274 sq. ft	Yes
8	Breakfast Nook	10'3" x 8'11"	91 sq. ft	Yes
9	Garage	10'6" x 21'7"	226 sq. ft	No

Home report

628 Greycliffe Lane, Lower Gwynedd, Montgomery County,
Pennsylvania, United States, 19002



Room dimensions

Floor 3

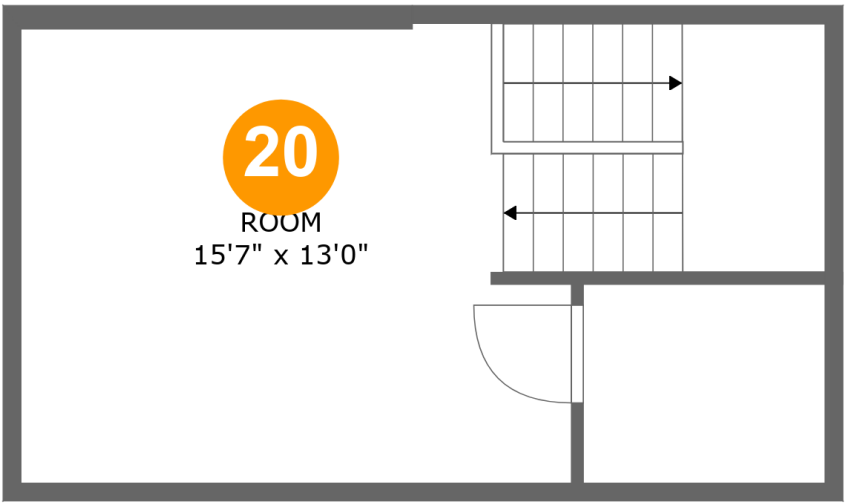
Total:1179sqft

Excluded: 0sqft

#		Max Dimensions	sqft	Included
10	W.I.C.	7'2" x 8'0"	57 sq. ft	Yes
11	Primary Bath	9'2" x 13'3"	108 sq. ft	Yes
12	Primary Bedroom	20'5" x 17'8"	261 sq. ft	Yes
13	Sitting Room	12'4" x 10'10"	119 sq. ft	Yes
14	Hall	5'11" x 18'8"	155 sq. ft	Yes
15	Laundry	2'9" x 6'6"	18 sq. ft	Yes
16	Bedroom	10'6" x 13'9"	123 sq. ft	Yes
17	Bedroom	11'11" x 12'8"	147 sq. ft	Yes
18	Bath	7'0" x 8'11"	57 sq. ft	Yes
19	W.I.C.	7'0" x 5'1"	35 sq. ft	Yes

Home report

628 Greycliffe Lane, Lower Gwynedd, Montgomery County,
Pennsylvania, United States, 19002



Room dimensions

Floor 4 Total:293sqft Excluded: 0sqft

#		Max Dimensions	sqft	Included
20	Room	15'7" x 13'0"	250 sq. ft	Yes

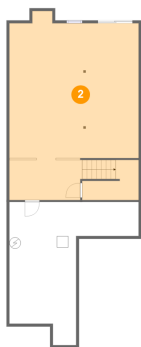
1 Floor 1 - Storage



Max Dimensions: 22'9" x 25'2"
Calculated Area: 332 sq. ft
Included: No

Heated: No
Finished: No
Enclosed: No
Contiguous: Yes
Permitted: Yes
Wet space: No
Addition: No
Conversion: No

2 Floor 1 - Recreation Room



Max Dimensions: 22'9" x 33'2"
Calculated Area: 706 sq. ft
Included: Yes

Heated: Yes
Finished: Yes
Enclosed: Yes
Contiguous: Yes
Permitted: Yes
Wet space: No
Addition: No
Conversion: No

628 Greycliffe Lane, Lower Gwynedd, Montgomery County,
Pennsylvania, United States, 19002

3 Floor 2 - Kitchen



Max Dimensions: 10'3" x 14'9"
Calculated Area: 142 sq. ft
Included: Yes

Heated: Yes
Finished: Yes
Enclosed: Yes
Contiguous: Yes
Permitted: Yes
Wet space: No
Addition: No
Conversion: No

4 Floor 2 - WC



Max Dimensions: 5'0" x 6'0"
Calculated Area: 30 sq. ft
Included: Yes

Heated: Yes
Finished: Yes
Enclosed: Yes
Contiguous: Yes
Permitted: Yes
Wet space: Yes
Addition: No
Conversion: No

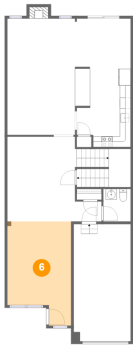
5 Floor 2 - Dining Area



Max Dimensions: 12'10" x 15'7"
Calculated Area: 281 sq. ft
Included: Yes

Heated: Yes
Finished: Yes
Enclosed: Yes
Contiguous: Yes
Permitted: Yes
Wet space: No
Addition: No
Conversion: No

6 Floor 2 - Living Room



Max Dimensions: 11'9" x 19'2"
Calculated Area: 196 sq. ft
Included: Yes

Heated: Yes
Finished: Yes
Enclosed: Yes
Contiguous: Yes
Permitted: Yes
Wet space: No
Addition: No
Conversion: No

7 Floor 2 - Family Room



Max Dimensions: 12'6" x 21'5"
Calculated Area: 274 sq. ft
Included: Yes

Heated: Yes
Finished: Yes
Enclosed: Yes
Contiguous: Yes
Permitted: Yes
Wet space: No
Addition: No
Conversion: No

8 Floor 2 - Breakfast Nook



Max Dimensions: 10'3" x 8'11"
Calculated Area: 91 sq. ft
Included: Yes

Heated: Yes
Finished: Yes
Enclosed: Yes
Contiguous: Yes
Permitted: Yes
Wet space: No
Addition: No
Conversion: No

9 Floor 2 - Garage



Max Dimensions: 10'6" x 21'7"
Calculated Area: 226 sq. ft
Included: No

Heated: No
Finished: No
Enclosed: Yes
Contiguous: Yes
Permitted: Yes
Wet space: No
Addition: No
Conversion: No

10 Floor 3 - W.I.C.



Max Dimensions: 7'2" x 8'0"
Calculated Area: 57 sq. ft
Included: Yes

Heated: Yes
Finished: Yes
Enclosed: Yes
Contiguous: Yes
Permitted: Yes
Wet space: No
Addition: No
Conversion: No

11 Floor 3 - Primary Bath



Max Dimensions: 9'2" x 13'3"
Calculated Area: 108 sq. ft
Included: Yes

Heated: Yes
Finished: Yes
Enclosed: Yes
Contiguous: Yes
Permitted: Yes
Wet space: Yes
Addition: No
Conversion: No

628 Greycliffe Lane, Lower Gwynedd, Montgomery County,
Pennsylvania, United States, 19002

12 Floor 3 - Primary Bedroom



Max Dimensions: 20'5" x 17'8"
Calculated Area: 261 sq. ft
Included: Yes

Heated: Yes
Finished: Yes
Enclosed: Yes
Contiguous: Yes
Permitted: Yes
Wet space: No
Addition: No
Conversion: No

13 Floor 3 - Sitting Room



Max Dimensions: 12'4" x 10'10"
Calculated Area: 119 sq. ft
Included: Yes

Heated: Yes
Finished: Yes
Enclosed: Yes
Contiguous: Yes
Permitted: Yes
Wet space: No
Addition: No
Conversion: No

14 Floor 3 - Hall



Max Dimensions: 5'11" x 18'8"
Calculated Area: 155 sq. ft
Included: Yes

Heated: Yes
Finished: Yes
Enclosed: Yes
Contiguous: Yes
Permitted: Yes
Wet space: No
Addition: No
Conversion: No

628 Greycliffe Lane, Lower Gwynedd, Montgomery County,
Pennsylvania, United States, 19002

15 Floor 3 - Laundry



Max Dimensions: 2'9" x 6'6"
Calculated Area: 18 sq. ft
Included: Yes

Heated: Yes
Finished: Yes
Enclosed: Yes
Contiguous: Yes
Permitted: Yes
Wet space: No
Addition: No
Conversion: No

16 Floor 3 - Bedroom



Max Dimensions: 10'6" x 13'9"
Calculated Area: 123 sq. ft
Included: Yes

Heated: Yes
Finished: Yes
Enclosed: Yes
Contiguous: Yes
Permitted: Yes
Wet space: No
Addition: No
Conversion: No

17 Floor 3 - Bedroom



Max Dimensions: 11'11" x 12'8"
Calculated Area: 147 sq. ft
Included: Yes

Heated: Yes
Finished: Yes
Enclosed: Yes
Contiguous: Yes
Permitted: Yes
Wet space: No
Addition: No
Conversion: No

628 Greycliffe Lane, Lower Gwynedd, Montgomery County,
Pennsylvania, United States, 19002

18 Floor 3 - Bath



Max Dimensions: 7'0" x 8'11"
Calculated Area: 57 sq. ft
Included: Yes

Heated: Yes
Finished: Yes
Enclosed: Yes
Contiguous: Yes
Permitted: Yes
Wet space: Yes
Addition: No
Conversion: No

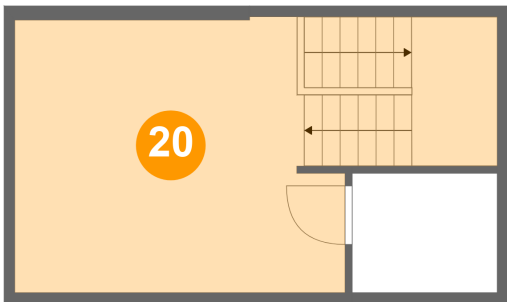
19 Floor 3 - W.I.C.



Max Dimensions: 7'0" x 5'1"
Calculated Area: 35 sq. ft
Included: Yes

Heated: Yes
Finished: Yes
Enclosed: Yes
Contiguous: Yes
Permitted: Yes
Wet space: No
Addition: No
Conversion: No

20 Floor 4 - Room



Max Dimensions: 15'7" x 13'0"
Calculated Area: 250 sq. ft
Included: Yes

Heated: Yes
Finished: Yes
Enclosed: Yes
Contiguous: Yes
Permitted: Yes
Wet space: No
Addition: No
Conversion: No