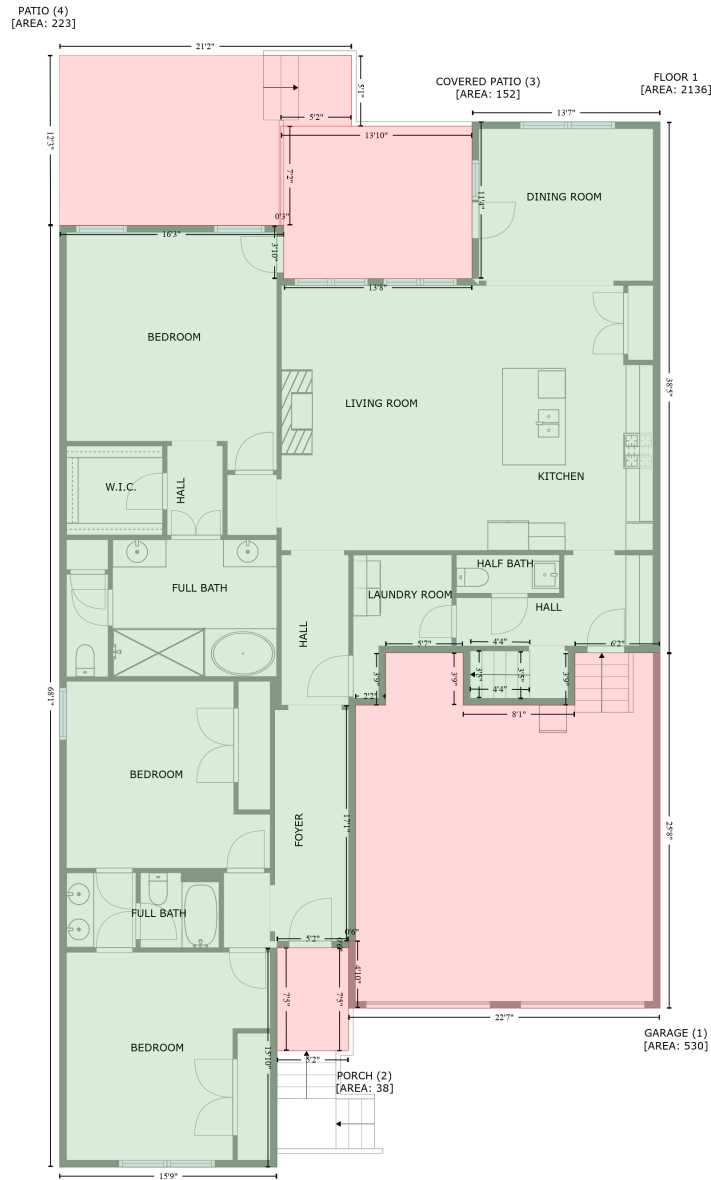


2620 Bramblewood Ln, Thompson's Station, Tennessee, United States

Gross Living Area: 2875 sq. ft



Space	Area (sq. ft)	Calculation
FLOOR 1 (Living area)	2136	Coordinate Polygon Area Algorithm using inches $-((789.9 + 789.9) * (-126.1 - 334.5) + (789.9 + 715.9) * (334.5 - 334.5) + (715.9 + 715.9) * (334.5 - 379.8) + (715.9 + 618.9) * (379.8 - 379.8) + (618.9 + 618.9) * (379.8 - 334.5) + (618.9 + 551.6) * (334.5 - 334.5) + (551.6 + 551.6) * (334.5 - 379.8) + (551.6 + 525.4) * (379.8 - 379.8) + (525.4 + 525.4) * (379.8 - 584.3) + (525.4 + 519.4) * (584.3 - 584.3) + (519.4 + 519.4) * (584.3 - 590.3) + (519.4 + 457.3) * (590.3 - 590.3) + (457.3 + 457.3) * (590.3 - 780.5) + (457.3 + 268.5) * (780.5 - 780.5) + (268.5 + 268.5) * (780.5 - -36.2) + (268.5 + 463.1) * (-36.2 - -36.2) + (463.1 + 463.1) * (-36.2 - 9.9) + (463.1 + 626.6) * (9.9 - 9.9) + (626.6 + 626.6) * (9.9 - -126.1) + (626.6 + 789.9) *$

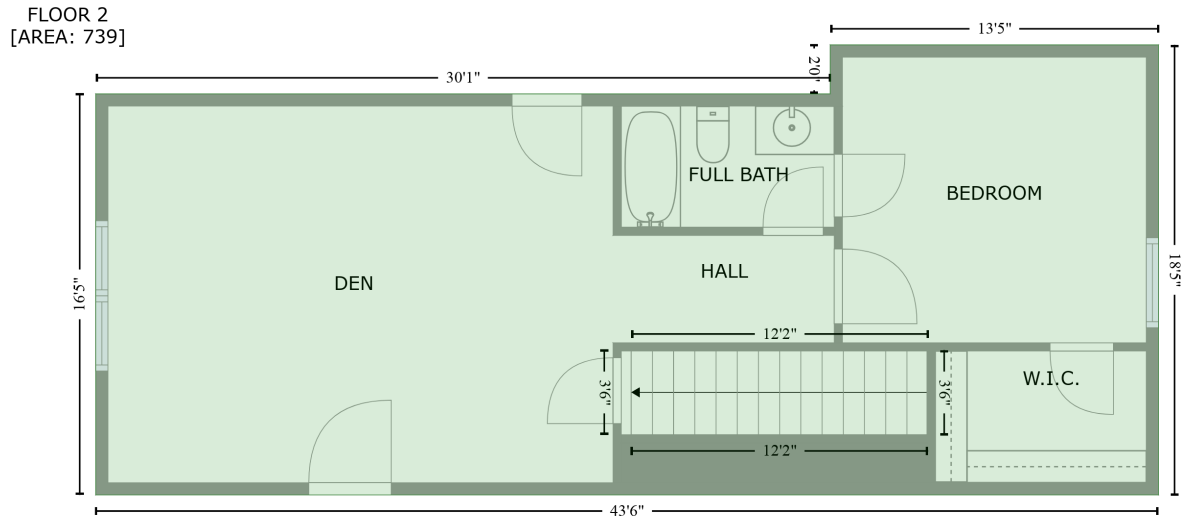
2620 Bramblewood Ln, Thompson's Station, Tennessee, United States

Gross Living Area: 2875 sq. ft

Space	Area (sq. ft)	Calculation <small>Coordinate Polygon Area Algorithm using inches</small>
GARAGE (Non-living area)	530	$(-126.1 - -126.1) * 0.5 * 0.00694$ $-((618.9 + 618.9) * (334.5 - 379.8) + (618.9 + 715.9) * (379.8 - 379.8) + (715.9 + 715.9) * (379.8 - 334.5) + (715.9 + 789.9) * (334.5 - 334.5) + (789.9 + 789.9) * (334.5 - 642.7) + (789.9 + 519.4) * (642.7 - 642.7) + (519.4 + 519.4) * (642.7 - 584.3) + (519.4 + 525.4) * (584.3 - 584.3) + (525.4 + 525.4) * (584.3 - 379.8) + (525.4 + 551.6) * (379.8 - 379.8) + (551.6 + 551.6) * (379.8 - 334.5) + (551.6 + 618.9) * (334.5 - 334.5)) * 0.5 * 0.00694$
PORCH (Non-living area)	38	$-((519.4 + 519.4) * (590.3 - 679.6) + (519.4 + 457.5) * (679.6 - 679.6) + (457.5 + 457.3) * (679.6 - 590.3) + (457.3 + 519.4) * (590.3 - 590.3)) * 0.5 * 0.00694$
COVERED PATIO (Non-living area)	152	$-((626.6 + 626.6) * (-122.3 - 9.9) + (626.6 + 463.1) * (9.9 - 9.9) + (463.1 + 463.1) * (9.9 - -36.2) + (463.1 + 460.6) * (-36.2 - -36.2) + (460.6 + 460.6) * (-36.2 - -122.3) + (460.6 + 626.6) * (-122.3 - -122.3)) * 0.5 * 0.00694$
PATIO (Non-living area)	223	$-((522.1 + 522.1) * (-183.7 - -122.3) + (522.1 + 460.6) * (-122.3 - -122.3) + (460.6 + 460.6) * (-122.3 - -36.2) + (460.6 + 268.5) * (-36.2 - -36.2) + (268.5 + 268.2) * (-36.2 - -183.7) + (268.2 + 522.1) * (-183.7 - -183.7)) * 0.5 * 0.00694$

2620 Bramblewood Ln, Thompson's Station, Tennessee, United States

Gross Living Area: 2875 sq. ft



Space	Area (sq. ft)	Calculation <small>Coordinate Polygon Area Algorithm using inches</small>
FLOOR 2 (Living area)	739	$-\left((790.2 + 790.2) * (183.3 - 404) + (790.2 + 268.3) * (404 - 404) + (268.3 + 268.3) * (404 - 207.3) + (268.3 + 629) * (207.3 - 207.3) + (629 + 629) * (207.3 - 183.3) + (629 + 790.2) * (183.3 - 183.3)\right) * 0.5 * 0.00694$