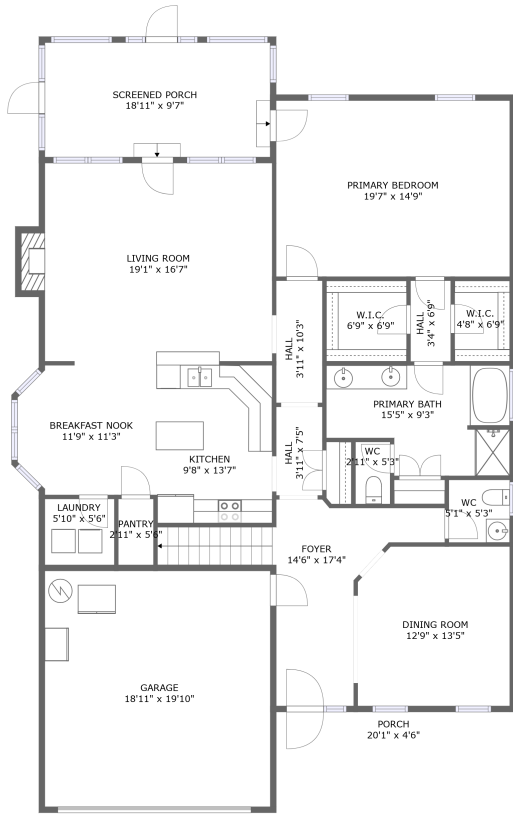
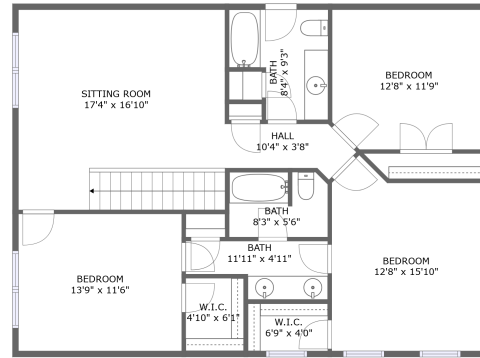


131 Southwest Properzi Way, Huntsville, Madison County, Alabama, United States, 35824



FLOOR 1




FLOOR 2

Property Summary

 **1** garages

 **4** bedrooms

 **3** bathrooms

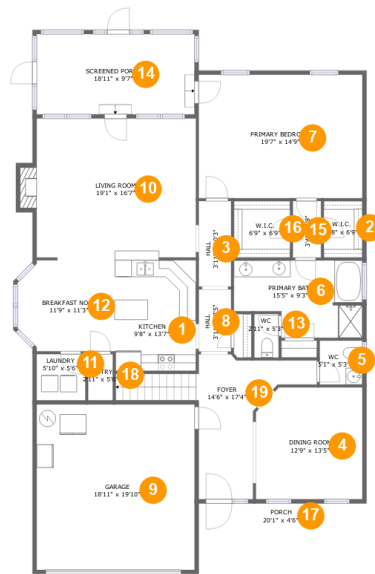
 **1** half baths

 **2** floors

 **2,951** Gross Living Area sqft

 **3,652** total sqft

131 Southwest Properzi Way, Huntsville, Madison County, Alabama, United States, 35824



Room Dimensions

Floor 1

Total sqft: 2464

Living area: 1763

#	Room name	Dimensions	Area (sqft)	Counted as Living Area
1	Kitchen	9'8" x 13'7"	130 sq. ft	Yes
2	W.i.c.	4'8" x 6'9"	31 sq. ft	Yes
3	Hall	3'11" x 10'3"	40 sq. ft	Yes
4	Dining Room	12'9" x 13'5"	167 sq. ft	Yes
5	Wc	5'1" x 5'3"	27 sq. ft	Yes
6	Primary Bath	15'5" x 9'3"	124 sq. ft	Yes
7	Primary Bedroom	19'7" x 14'9"	290 sq. ft	Yes
8	Hall	3'11" x 7'5"	29 sq. ft	Yes
9	Garage	18'11" x 19'10"	375 sq. ft	No
10	Living Room	19'1" x 16'7"	328 sq. ft	Yes
11	Laundry	5'10" x 5'6"	32 sq. ft	Yes

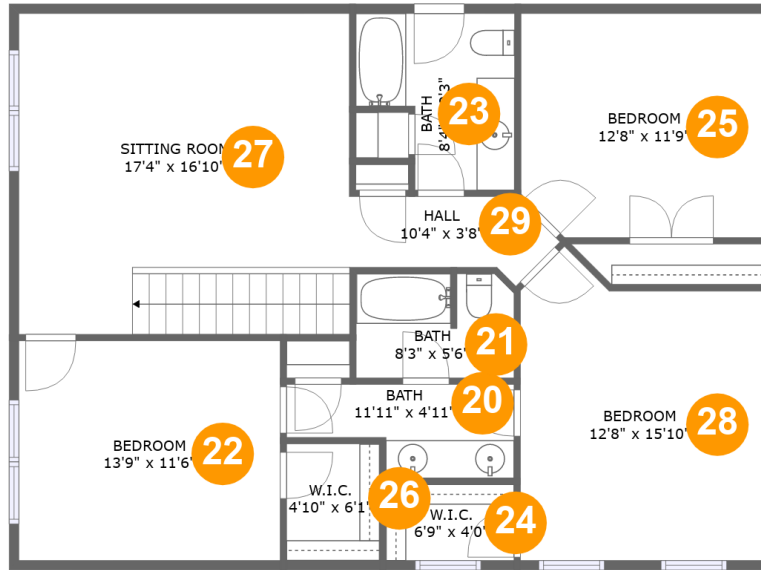
Scan captured on Tue, 03 Sep 2024 15:20:29 GMT

Information is calculated by CubiCasa technology; deemed highly reliable but not guaranteed.

**131 Southwest Properzi Way, Huntsville, Madison
County, Alabama, United States, 35824**

#	Room name	Dimensions	Area (sqft)	Counted as Living Area
12	Breakfast Nook	11'9" x 11'3"	123 sq. ft	Yes
13	Wc	2'11" x 5'3"	15 sq. ft	Yes
14	Screened Porch	18'11" x 9'7"	182 sq. ft	No
15	Hall	3'4" x 6'9"	23 sq. ft	Yes
16	W.i.c.	6'9" x 6'9"	46 sq. ft	Yes
17	Porch	20'1" x 4'6"	91 sq. ft	No
18	Pantry	2'11" x 5'6"	16 sq. ft	Yes
19	Foyer	14'6" x 17'4"	170 sq. ft	Yes

131 Southwest Properzi Way, Huntsville, Madison County, Alabama, United States, 35824



Room Dimensions

Floor 2

Total sqft: 1188

Living area: 1188

#	Room name	Dimensions	Area (sqft)	Counted as Living Area
20	Bath	11'11" x 4'11"	48 sq. ft	Yes
21	Bath	8'3" x 5'6"	44 sq. ft	Yes
22	Bedroom	13'9" x 11'6"	158 sq. ft	Yes
23	Bath	8'4" x 9'3"	63 sq. ft	Yes
24	W.i.c.	6'9" x 4'0"	27 sq. ft	Yes
25	Bedroom	12'8" x 11'9"	147 sq. ft	Yes
26	W.i.c.	4'10" x 6'1"	30 sq. ft	Yes
27	Sitting Room	17'4" x 16'10"	292 sq. ft	Yes
28	Bedroom	12'8" x 15'10"	185 sq. ft	Yes
29	Hall	10'4" x 3'8"	38 sq. ft	Yes

131 Southwest Properzi Way, Huntsville, Madison County, Alabama, United States, 35824

1 Floor 1 - Kitchen



Dimensions: 9'8" x 13'7"
Area: 130 sq. ft
Counted as Living Area:
Yes

Heated: Yes
Finished: Yes
Enclosed: Yes
Contiguous:
Yes
Permitted: Yes
Wet Space: No
Addition: No
Conversion: No

2 Floor 1 - W.i.c.



Dimensions: 4'8" x 6'9"
Area: 31 sq. ft
Counted as Living Area:
Yes

Heated: Yes
Finished: Yes
Enclosed: Yes
Contiguous:
Yes
Permitted: Yes
Wet Space: No
Addition: No
Conversion: No

131 Southwest Properzi Way, Huntsville, Madison County, Alabama, United States, 35824

3 Floor 1 - Hall



Dimensions: 3'11" x 10'3"
Area: 40 sq. ft
Counted as Living Area:
Yes

Heated: Yes
Finished: Yes
Enclosed: Yes
Contiguous:
Yes
Permitted: Yes
Wet Space: No
Addition: No
Conversion: No

4 Floor 1 - Dining Room



Dimensions: 12'9" x 13'5"
Area: 167 sq. ft
Counted as Living Area:
Yes

Heated: Yes
Finished: Yes
Enclosed: Yes
Contiguous:
Yes
Permitted: Yes
Wet Space: No
Addition: No
Conversion: No

5 Floor 1 - Wc



Dimensions: 5'1" x 5'3"
Area: 27 sq. ft
Counted as Living Area:
Yes

Heated: Yes
Finished: Yes
Enclosed: Yes
Contiguous:
Yes
Permitted: Yes
Wet Space: Yes
Addition: No
Conversion: No

131 Southwest Properzi Way, Huntsville, Madison County, Alabama, United States, 35824

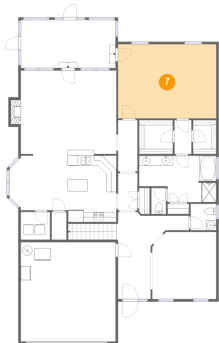
6 Floor 1 - Primary Bath



Dimensions: 15'5" x 9'3"
Area: 124 sq. ft
Counted as Living Area:
Yes

Heated: Yes
Finished: Yes
Enclosed: Yes
Contiguous:
Yes
Permitted: Yes
Wet Space: Yes
Addition: No
Conversion: No

7 Floor 1 - Primary Bedroom



Dimensions: 19'7" x 14'9"
Area: 290 sq. ft
Counted as Living Area:
Yes

Heated: Yes
Finished: Yes
Enclosed: Yes
Contiguous:
Yes
Permitted: Yes
Wet Space: No
Addition: No
Conversion: No

8 Floor 1 - Hall



Dimensions: 3'11" x 7'5"
Area: 29 sq. ft
Counted as Living Area:
Yes

Heated: Yes
Finished: Yes
Enclosed: Yes
Contiguous:
Yes
Permitted: Yes
Wet Space: No
Addition: No
Conversion: No

131 Southwest Properzi Way, Huntsville, Madison County, Alabama, United States, 35824

9 Floor 1 - Garage



Dimensions: 18'11" x 19'10"
Area: 375 sq. ft
Counted as Living Area: No

Heated: No
Finished: No
Enclosed: Yes
Contiguous: Yes
Permitted: Yes
Wet Space: No
Addition: No
Conversion: No

10 Floor 1 - Living Room



Dimensions: 19'1" x 16'7"
Area: 328 sq. ft
Counted as Living Area: Yes

Heated: Yes
Finished: Yes
Enclosed: Yes
Contiguous: Yes
Permitted: Yes
Wet Space: No
Addition: No
Conversion: No

11 Floor 1 - Laundry



Dimensions: 5'10" x 5'6"
Area: 32 sq. ft
Counted as Living Area: Yes

Heated: Yes
Finished: Yes
Enclosed: Yes
Contiguous: Yes
Permitted: Yes
Wet Space: No
Addition: No
Conversion: No

131 Southwest Properzi Way, Huntsville, Madison County, Alabama, United States, 35824

12 Floor 1 - Breakfast Nook



Dimensions: 11'9" x 11'3"
Area: 123 sq. ft
Counted as Living Area:
Yes

Heated: Yes
Finished: Yes
Enclosed: Yes
Contiguous:
Yes
Permitted: Yes
Wet Space: No
Addition: No
Conversion: No

13 Floor 1 - Wc



Dimensions: 2'11" x 5'3"
Area: 15 sq. ft
Counted as Living Area:
Yes

Heated: Yes
Finished: Yes
Enclosed: Yes
Contiguous:
Yes
Permitted: Yes
Wet Space: Yes
Addition: No
Conversion: No

14 Floor 1 - Screened Porch



Dimensions: 18'11" x 9'7"
Area: 182 sq. ft
Counted as Living Area: No

Heated: No
Finished: Yes
Enclosed: No
Contiguous: Yes
Permitted: Yes
Wet Space: No
Addition: No
Conversion: No

131 Southwest Properzi Way, Huntsville, Madison County, Alabama, United States, 35824

15 Floor 1 - Hall



Dimensions: 3'4" x 6'9"
Area: 23 sq. ft
Counted as Living Area:
Yes

Heated: Yes
Finished: Yes
Enclosed: Yes
Contiguous:
Yes
Permitted: Yes
Wet Space: No
Addition: No
Conversion: No

16 Floor 1 - W.i.c.



Dimensions: 6'9" x 6'9"
Area: 46 sq. ft
Counted as Living Area:
Yes

Heated: Yes
Finished: Yes
Enclosed: Yes
Contiguous:
Yes
Permitted: Yes
Wet Space: No
Addition: No
Conversion: No

17 Floor 1 - Porch



Dimensions: 20'1" x 4'6"
Area: 91 sq. ft
Counted as Living Area: No

Heated: No
Finished: Yes
Enclosed: No
Contiguous: Yes
Permitted: Yes
Wet Space: No
Addition: No
Conversion: No

131 Southwest Properzi Way, Huntsville, Madison County, Alabama, United States, 35824

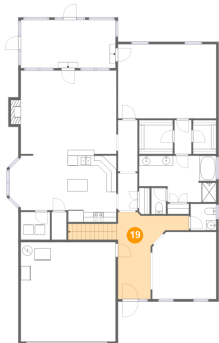
18 Floor 1 - Pantry



Dimensions: 2'11" x 5'6"
Area: 16 sq. ft
Counted as Living Area:
Yes

Heated: Yes
Finished: Yes
Enclosed: Yes
Contiguous:
Yes
Permitted: Yes
Wet Space: No
Addition: No
Conversion: No

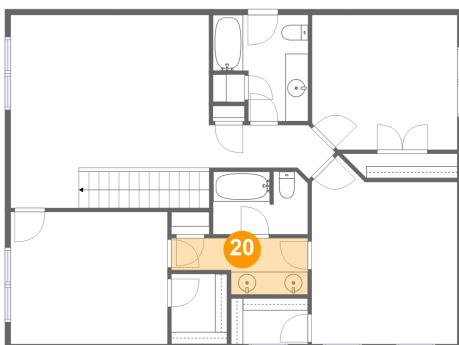
19 Floor 1 - Foyer



Dimensions: 14'6" x 17'4"
Area: 170 sq. ft
Counted as Living Area:
Yes

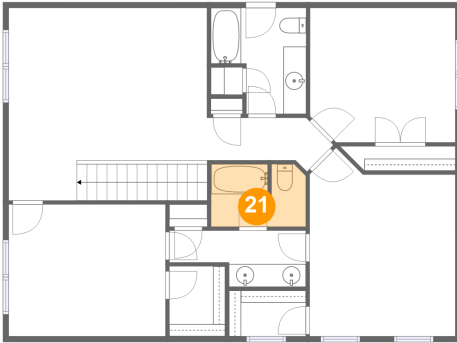
Heated: Yes
Finished: Yes
Enclosed: Yes
Contiguous:
Yes
Permitted: Yes
Wet Space: No
Addition: No
Conversion: No

20 Floor 2 - Bath



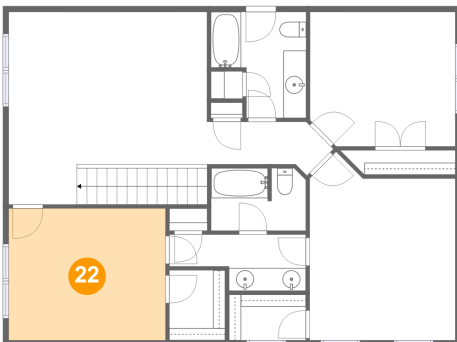
Dimensions: 11'11" x 4'11"
Area: 48 sq. ft
Counted as Living Area:
Yes

Heated: Yes
Finished: Yes
Enclosed: Yes
Contiguous:
Yes
Permitted: Yes
Wet Space: Yes
Addition: No
Conversion: No

**131 Southwest Properzi Way, Huntsville, Madison
County, Alabama, United States, 35824****21 Floor 2 - Bath**

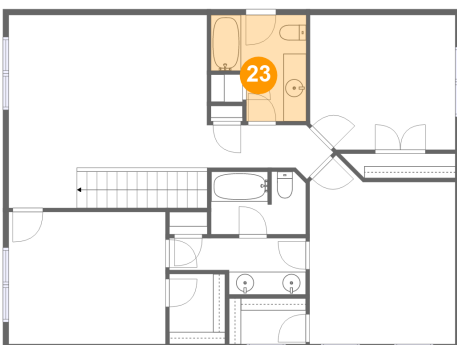
Dimensions: 8'3" x 5'6"
Area: 44 sq. ft
Counted as Living Area:
Yes

Heated: Yes
Finished: Yes
Enclosed: Yes
Contiguous:
Yes
Permitted: Yes
Wet Space: Yes
Addition: No
Conversion: No

22 Floor 2 - Bedroom

Dimensions: 13'9" x 11'6"
Area: 158 sq. ft
Counted as Living Area:
Yes

Heated: Yes
Finished: Yes
Enclosed: Yes
Contiguous:
Yes
Permitted: Yes
Wet Space: No
Addition: No
Conversion: No

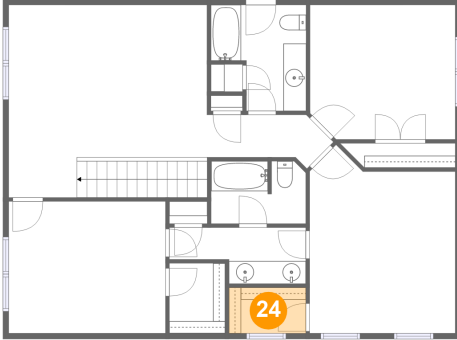
23 Floor 2 - Bath

Dimensions: 8'4" x 9'3"
Area: 63 sq. ft
Counted as Living Area:
Yes

Heated: Yes
Finished: Yes
Enclosed: Yes
Contiguous:
Yes
Permitted: Yes
Wet Space: Yes
Addition: No
Conversion: No

131 Southwest Properzi Way, Huntsville, Madison County, Alabama, United States, 35824

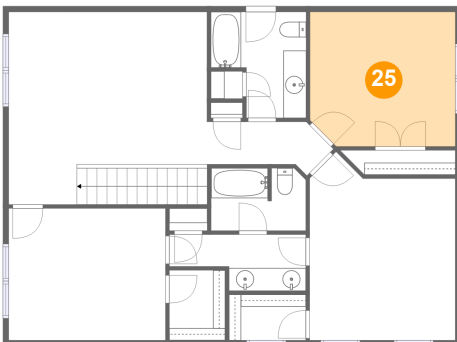
24 Floor 2 - W.i.c.



Dimensions: 6'9" x 4'0"
Area: 27 sq. ft
Counted as Living Area:
Yes

Heated: Yes
Finished: Yes
Enclosed: Yes
Contiguous:
Yes
Permitted: Yes
Wet Space: No
Addition: No
Conversion: No

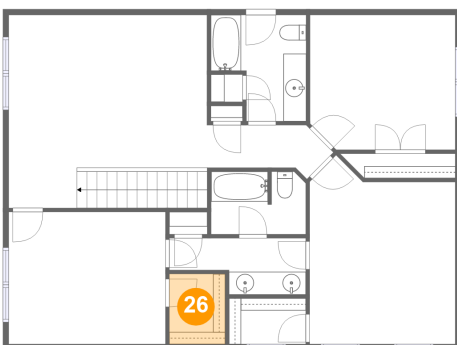
25 Floor 2 - Bedroom



Dimensions: 12'8" x 11'9"
Area: 147 sq. ft
Counted as Living Area:
Yes

Heated: Yes
Finished: Yes
Enclosed: Yes
Contiguous:
Yes
Permitted: Yes
Wet Space: No
Addition: No
Conversion: No

26 Floor 2 - W.i.c.

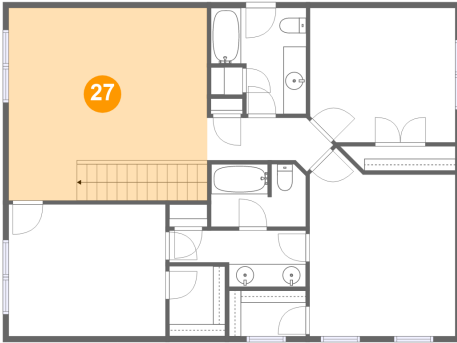


Dimensions: 4'10" x 6'1"
Area: 30 sq. ft
Counted as Living Area:
Yes

Heated: Yes
Finished: Yes
Enclosed: Yes
Contiguous:
Yes
Permitted: Yes
Wet Space: No
Addition: No
Conversion: No

131 Southwest Properzi Way, Huntsville, Madison County, Alabama, United States, 35824

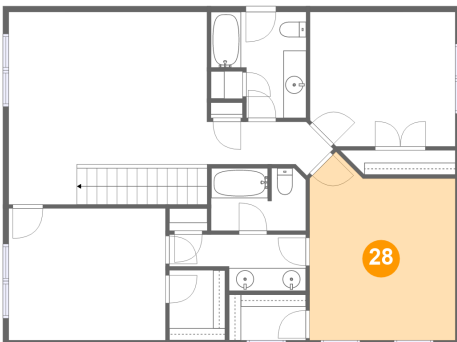
27 Floor 2 - Sitting Room



Dimensions: 17'4" x 16'10"
Area: 292 sq. ft
Counted as Living Area:
Yes

Heated: Yes
Finished: Yes
Enclosed: Yes
Contiguous:
Yes
Permitted: Yes
Wet Space: No
Addition: No
Conversion: No

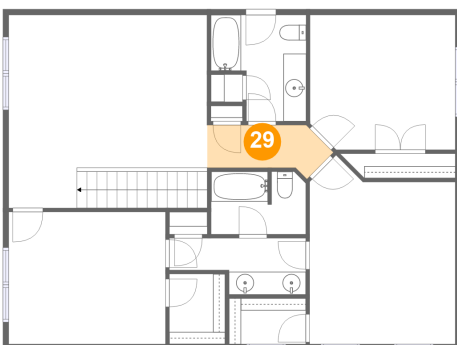
28 Floor 2 - Bedroom



Dimensions: 12'8" x 15'10"
Area: 185 sq. ft
Counted as Living Area:
Yes

Heated: Yes
Finished: Yes
Enclosed: Yes
Contiguous:
Yes
Permitted: Yes
Wet Space: No
Addition: No
Conversion: No

29 Floor 2 - Hall



Dimensions: 10'4" x 3'8"
Area: 38 sq. ft
Counted as Living Area:
Yes

Heated: Yes
Finished: Yes
Enclosed: Yes
Contiguous:
Yes
Permitted: Yes
Wet Space: No
Addition: No
Conversion: No