

5901 Pineglade Crescent, Chapel Hill South, Orléans, Ontario, Canada, K1W 1G3

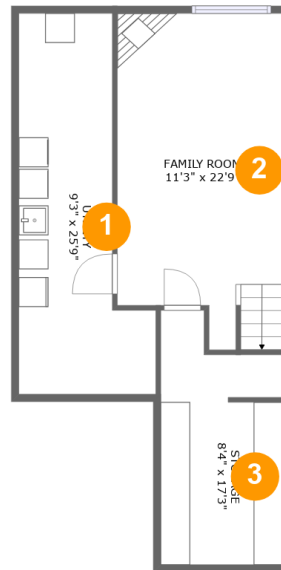


Property summary

 **1** Garages
  **3** Bedrooms
  **2** Bathrooms
  **1** Half baths

 **3** Floors
  **1,333** Gross living area sqft
  **2,139** Total sqft

5901 Pineglade Crescent, Chapel Hill South, Orléans,
Ontario, Canada, K1W 1G3



Room dimensions

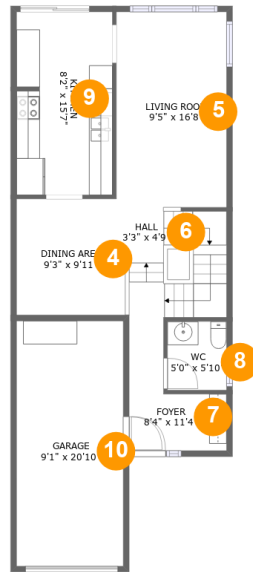
Floor 1

Total sqft: 597

Living area: 0

#		Dimensions	sqft	Counted as living area
1	Utility	9'3" x 25'9"	180 sq. ft	No
2	Family Room	11'3" x 22'9"	236 sq. ft	No
3	Storage	8'4" x 17'3"	125 sq. ft	No

5901 Pineglade Crescent, Chapel Hill South, Orléans, Ontario, Canada, K1W 1G3



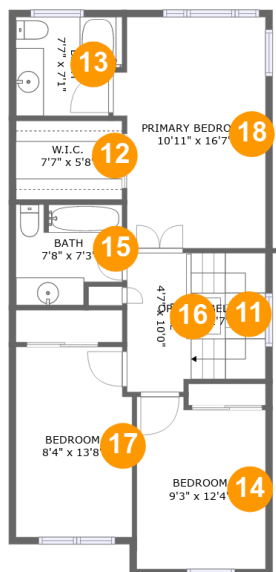
Room dimensions

Floor 2

Total sqft: 810 Living area: 606

#		Dimensions	sqft	Counted as living area
4	Dining Area	9'3" x 9'11"	91 sq. ft	Yes
5	Living Room	9'5" x 16'8"	156 sq. ft	Yes
6	Hall	3'3" x 4'9"	80 sq. ft	Yes
7	Foyer	8'4" x 11'4"	59 sq. ft	Yes
8	WC	5'0" x 5'10"	29 sq. ft	Yes
9	Kitchen	8'2" x 15'7"	127 sq. ft	Yes
10	Garage	9'1" x 20'10"	190 sq. ft	No

5901 Pineglade Crescent, Chapel Hill South, Orléans, Ontario, Canada, K1W 1G3



Room dimensions

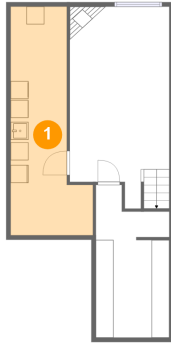
Floor 3

Total sqft: 732 Living area: 727

#		Dimensions	sqft	Counted as living area
11	Open To Below	2'1" x 2'7"	5 sq. ft	No
12	W.I.C.	7'7" x 5'8"	43 sq. ft	Yes
13	Bath	7'7" x 7'1"	50 sq. ft	Yes
14	Bedroom	9'3" x 12'4"	108 sq. ft	Yes
15	Bath	7'8" x 7'3"	50 sq. ft	Yes
16	Hall	4'7" x 10'0"	83 sq. ft	Yes
17	Bedroom	8'4" x 13'8"	111 sq. ft	Yes
18	Primary Bedroom	10'11" x 16'7"	168 sq. ft	Yes

5901 Pineglade Crescent, Chapel Hill South, Orléans,
Ontario, Canada, K1W 1G3

1 Floor 1 - Utility



Dimensions: 9'3" x 25'9"
Area: 180 sq. ft
Counted as living area: No

Heated: Yes
Finished: Yes
Enclosed: Yes
Contiguous: No
Permitted: Yes
Wet space: No
Addition: No
Conversion: No

2 Floor 1 - Family Room

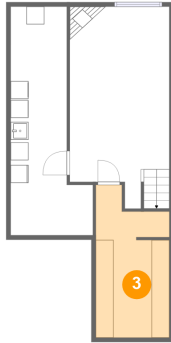


Dimensions: 11'3" x 22'9"
Area: 236 sq. ft
Counted as living area: No

Heated: Yes
Finished: Yes
Enclosed: Yes
Contiguous: No
Permitted: Yes
Wet space: No
Addition: No
Conversion: No

5901 Pineglade Crescent, Chapel Hill South, Orléans,
Ontario, Canada, K1W 1G3

3 Floor 1 - Storage



Dimensions: 8'4" x 17'3"
Area: 125 sq. ft
Counted as living area: No

Heated: No
Finished: No
Enclosed: No
Contiguous: Yes
Permitted: Yes
Wet space: No
Addition: No
Conversion: No

4 Floor 2 - Dining Area



Dimensions: 9'3" x 9'11"
Area: 91 sq. ft
Counted as living area: Yes

Heated: Yes
Finished: Yes
Enclosed: Yes
Contiguous: Yes
Permitted: Yes
Wet space: No
Addition: No
Conversion: No

5 Floor 2 - Living Room



Dimensions: 9'5" x 16'8"
Area: 156 sq. ft
Counted as living area: Yes

Heated: Yes
Finished: Yes
Enclosed: Yes
Contiguous: Yes
Permitted: Yes
Wet space: No
Addition: No
Conversion: No

5901 Pineglade Crescent, Chapel Hill South, Orléans, Ontario, Canada, K1W 1G3

6 Floor 2 - Hall



Dimensions: 3'3" x 4'9"
Area: 80 sq. ft
Counted as living area: Yes

Heated: Yes
Finished: Yes
Enclosed: Yes
Contiguous: Yes
Permitted: Yes
Wet space: No
Addition: No
Conversion: No

7 Floor 2 - Foyer



Dimensions: 8'4" x 11'4"
Area: 59 sq. ft
Counted as living area: Yes

Heated: Yes
Finished: Yes
Enclosed: Yes
Contiguous: Yes
Permitted: Yes
Wet space: No
Addition: No
Conversion: No

8 Floor 2 - WC



Dimensions: 5'0" x 5'10"
Area: 29 sq. ft
Counted as living area: Yes

Heated: Yes
Finished: Yes
Enclosed: Yes
Contiguous: Yes
Permitted: Yes
Wet space: Yes
Addition: No
Conversion: No

5901 Pineglade Crescent, Chapel Hill South, Orléans, Ontario, Canada, K1W 1G3

9 Floor 2 - Kitchen



Dimensions: 8'2" x 15'7"
Area: 127 sq. ft
Counted as living area: Yes

Heated: Yes
Finished: Yes
Enclosed: Yes
Contiguous: Yes
Permitted: Yes
Wet space: No
Addition: No
Conversion: No

10 Floor 2 - Garage



Dimensions: 9'1" x 20'10"
Area: 190 sq. ft
Counted as living area: No

Heated: No
Finished: No
Enclosed: Yes
Contiguous: Yes
Permitted: Yes
Wet space: No
Addition: No
Conversion: No

11 Floor 3 - Open To Below

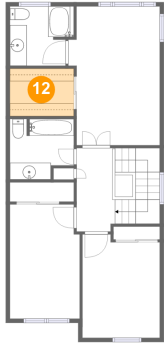


Dimensions: 2'1" x 2'7"
Area: 5 sq. ft
Counted as living area: No

Heated: No
Finished: No
Enclosed: No
Contiguous: Yes
Permitted: No
Wet space: No
Addition: No
Conversion: No

5901 Pineglade Crescent, Chapel Hill South, Orléans,
Ontario, Canada, K1W 1G3

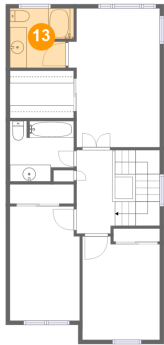
12 Floor 3 - W.I.C.



Dimensions: 7'7" x 5'8"
Area: 43 sq. ft
Counted as living area: Yes

Heated: Yes
Finished: Yes
Enclosed: Yes
Contiguous: Yes
Permitted: Yes
Wet space: No
Addition: No
Conversion: No

13 Floor 3 - Bath



Dimensions: 7'7" x 7'1"
Area: 50 sq. ft
Counted as living area: Yes

Heated: Yes
Finished: Yes
Enclosed: Yes
Contiguous: Yes
Permitted: Yes
Wet space: Yes
Addition: No
Conversion: No

14 Floor 3 - Bedroom

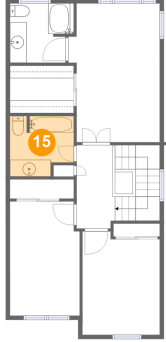


Dimensions: 9'3" x 12'4"
Area: 108 sq. ft
Counted as living area: Yes

Heated: Yes
Finished: Yes
Enclosed: Yes
Contiguous: Yes
Permitted: Yes
Wet space: No
Addition: No
Conversion: No

5901 Pineglade Crescent, Chapel Hill South, Orléans, Ontario, Canada, K1W 1G3

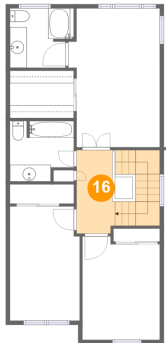
15 Floor 3 - Bath



Dimensions: 7'8" x 7'3"
Area: 50 sq. ft
Counted as living area: Yes

Heated: Yes
Finished: Yes
Enclosed: Yes
Contiguous: Yes
Permitted: Yes
Wet space: Yes
Addition: No
Conversion: No

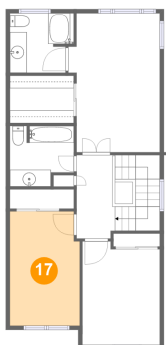
16 Floor 3 - Hall



Dimensions: 4'7" x 10'0"
Area: 83 sq. ft
Counted as living area: Yes

Heated: Yes
Finished: Yes
Enclosed: Yes
Contiguous: Yes
Permitted: Yes
Wet space: No
Addition: No
Conversion: No

17 Floor 3 - Bedroom

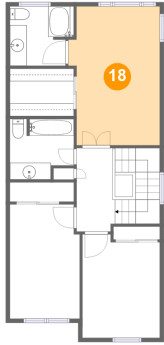


Dimensions: 8'4" x 13'8"
Area: 111 sq. ft
Counted as living area: Yes

Heated: Yes
Finished: Yes
Enclosed: Yes
Contiguous: Yes
Permitted: Yes
Wet space: No
Addition: No
Conversion: No

**5901 Pineglade Crescent, Chapel Hill South, Orléans,
Ontario, Canada, K1W 1G3**

18 Floor 3 - Primary Bedroom



Dimensions: 10'11" x 16'7"
Area: 168 sq. ft
Counted as living area: Yes

Heated: Yes
Finished: Yes
Enclosed: Yes
Contiguous: Yes
Permitted: Yes
Wet space: No
Addition: No
Conversion: No