

# 46 Boxwood Ln, Daleville, Botetourt County, Virginia, United States, 24083



## Property summary


 **1** Garages

 **5** Bedrooms

 **3** Bathrooms

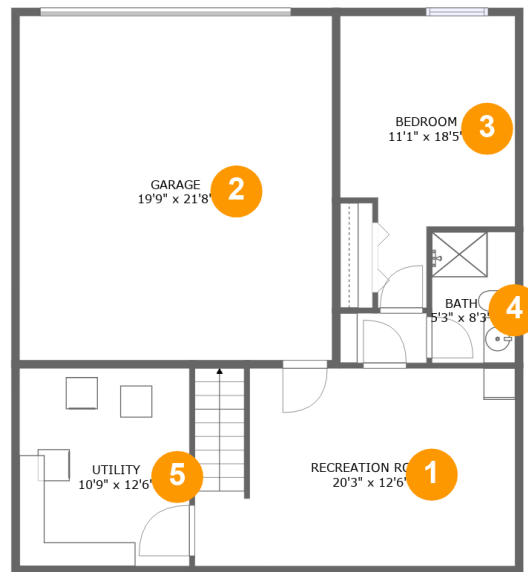
 **1** Half baths

 **3** Floors

 **2,808** Gross living area sqft

 **3,823** Total sqft

# 46 Boxwood Ln, Daleville, Botetourt County, Virginia, United States, 24083



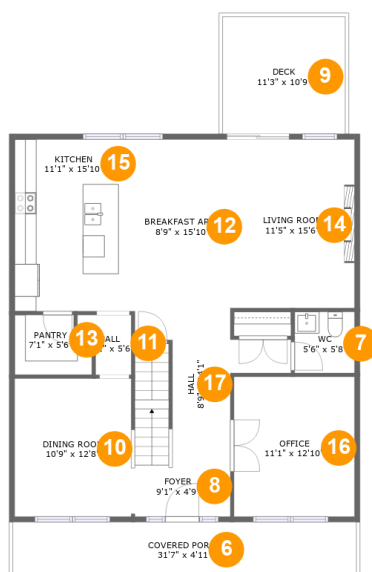
## Room dimensions

Floor 1

Total sqft: 1134 Living area: 542

#		Dimensions	sqft	Counted as living area
1	Recreation Room	20'3" x 12'6"	249 sq. ft	Yes
2	Garage	19'9" x 21'8"	428 sq. ft	No
3	Bedroom	11'1" x 18'5"	158 sq. ft	Yes
4	Bath	5'3" x 8'3"	43 sq. ft	Yes
5	Utility	10'9" x 12'6"	134 sq. ft	No

# 46 Boxwood Ln, Daleville, Botetourt County, Virginia, United States, 24083



## Room dimensions

Floor 2

Total sqft: 1410 Living area: 1133

#		Dimensions	sqft	Counted as living area
6	Covered Porch	31'7" x 4'11"	155 sq. ft	No
7	WC	5'6" x 5'8"	31 sq. ft	Yes
8	Foyer	9'1" x 4'9"	43 sq. ft	Yes
9	Deck	11'3" x 10'9"	122 sq. ft	No
10	Dining Room	10'9" x 12'8"	136 sq. ft	Yes
11	Hall	4'11" x 5'6"	21 sq. ft	Yes
12	Breakfast Area	8'9" x 15'10"	139 sq. ft	Yes
13	Pantry	7'1" x 5'6"	35 sq. ft	Yes
14	Living Room	11'5" x 15'6"	177 sq. ft	Yes
15	Kitchen	11'1" x 15'10"	175 sq. ft	Yes
16	Office	11'1" x 12'10"	143 sq. ft	Yes

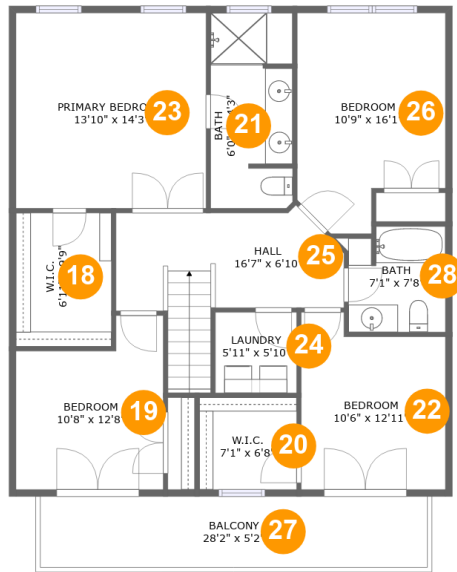
Scan captured on Mon, 10 Mar 2025 20:05:22 GMT

Information is calculated by Cubicasa technology deemed highly reliable but not guaranteed.

**46 Boxwood Ln, Daleville, Botetourt County, Virginia,  
United States, 24083**

#		Dimensions	sqft	Counted as living area
17	Hall	8'9" x 14'1"	139 sq. ft	Yes

# 46 Boxwood Ln, Daleville, Botetourt County, Virginia, United States, 24083



## Room dimensions

Floor 3

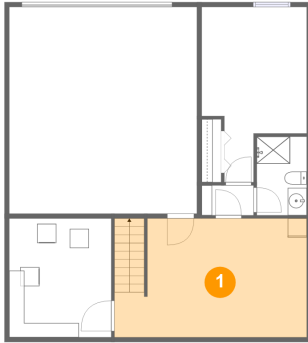
Total sqft: 1279 Living area: 1133

#		Dimensions	sqft	Counted as living area
18	W.I.C.	6'11" x 9'9"	68 sq. ft	Yes
19	Bedroom	10'8" x 12'8"	117 sq. ft	Yes
20	W.I.C.	7'1" x 6'8"	47 sq. ft	Yes
21	Bath	6'0" x 14'3"	83 sq. ft	Yes
22	Bedroom	10'6" x 12'11"	122 sq. ft	Yes
23	Primary Bedroom	13'10" x 14'3"	197 sq. ft	Yes
24	Laundry	5'11" x 5'10"	35 sq. ft	Yes
25	Hall	16'7" x 6'10"	131 sq. ft	Yes
26	Bedroom	10'9" x 16'1"	153 sq. ft	Yes
27	Balcony	28'2" x 5'2"	146 sq. ft	No
28	Bath	7'1" x 7'8"	52 sq. ft	Yes

# 46 Boxwood Ln, Daleville, Botetourt County, Virginia, United States, 24083

## 1 Floor 1 - Recreation Room

---

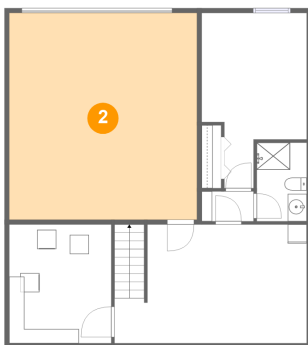


**Dimensions:** 20'3" x 12'6"  
**Area:** 249 sq. ft  
**Counted as living area:** Yes

**Heated:** Yes  
**Finished:** Yes  
**Enclosed:** Yes  
**Contiguous:** Yes  
**Permitted:** Yes  
**Wet space:** No  
**Addition:** No  
**Conversion:** No

## 2 Floor 1 - Garage

---

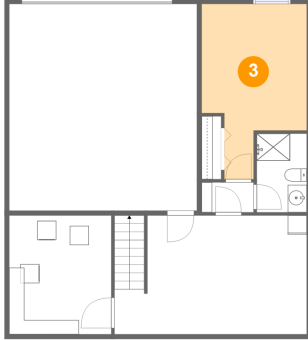


**Dimensions:** 19'9" x 21'8"  
**Area:** 428 sq. ft  
**Counted as living area:** No

**Heated:** No  
**Finished:** No  
**Enclosed:** Yes  
**Contiguous:** Yes  
**Permitted:** Yes  
**Wet space:** No  
**Addition:** No  
**Conversion:** No

# 46 Boxwood Ln, Daleville, Botetourt County, Virginia, United States, 24083

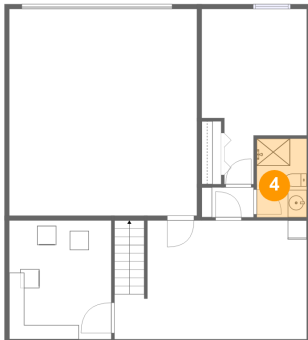
## 3 Floor 1 - Bedroom



Dimensions: 11'1" x 18'5"  
Area: 158 sq. ft  
Counted as living area: Yes

Heated: Yes  
Finished: Yes  
Enclosed: Yes  
Contiguous: Yes  
Permitted: Yes  
Wet space: No  
Addition: No  
Conversion: No

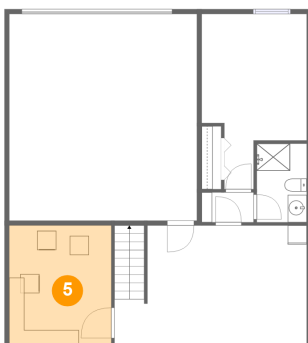
## 4 Floor 1 - Bath



Dimensions: 5'3" x 8'3"  
Area: 43 sq. ft  
Counted as living area: Yes

Heated: Yes  
Finished: Yes  
Enclosed: Yes  
Contiguous: Yes  
Permitted: Yes  
Wet space: Yes  
Addition: No  
Conversion: No

## 5 Floor 1 - Utility



Dimensions: 10'9" x 12'6"  
Area: 134 sq. ft  
Counted as living area: No

Heated: Yes  
Finished: No  
Enclosed: Yes  
Contiguous: Yes  
Permitted: Yes  
Wet space: No  
Addition: No  
Conversion: No

# 46 Boxwood Ln, Daleville, Botetourt County, Virginia, United States, 24083

## 6 Floor 2 - Covered Porch



Dimensions: 31'7" x 4'11"  
Area: 155 sq. ft  
Counted as living area: No

Heated: No  
Finished: Yes  
Enclosed: No  
Contiguous: Yes  
Permitted: Yes  
Wet space: No  
Addition: No  
Conversion: No

## 7 Floor 2 - WC



Dimensions: 5'6" x 5'8"  
Area: 31 sq. ft  
Counted as living area: Yes

Heated: Yes  
Finished: Yes  
Enclosed: Yes  
Contiguous: Yes  
Permitted: Yes  
Wet space: Yes  
Addition: No  
Conversion: No

## 8 Floor 2 - Foyer



Dimensions: 9'1" x 4'9"  
Area: 43 sq. ft  
Counted as living area: Yes

Heated: Yes  
Finished: Yes  
Enclosed: Yes  
Contiguous: Yes  
Permitted: Yes  
Wet space: No  
Addition: No  
Conversion: No



# 46 Boxwood Ln, Daleville, Botetourt County, Virginia, United States, 24083

## 9 Floor 2 - Deck



**Dimensions:** 11'3" x 10'9"  
**Area:** 122 sq. ft  
**Counted as living area:** No

**Heated:** No  
**Finished:** Yes  
**Enclosed:** No  
**Contiguous:** No  
**Permitted:** Yes  
**Wet space:** No  
**Addition:** No  
**Conversion:** No

## 10 Floor 2 - Dining Room



**Dimensions:** 10'9" x 12'8"  
**Area:** 136 sq. ft  
**Counted as living area:** Yes

**Heated:** Yes  
**Finished:** Yes  
**Enclosed:** Yes  
**Contiguous:** Yes  
**Permitted:** Yes  
**Wet space:** No  
**Addition:** No  
**Conversion:** No

## 11 Floor 2 - Hall



**Dimensions:** 4'11" x 5'6"  
**Area:** 21 sq. ft  
**Counted as living area:** Yes

**Heated:** Yes  
**Finished:** Yes  
**Enclosed:** Yes  
**Contiguous:** Yes  
**Permitted:** Yes  
**Wet space:** No  
**Addition:** No  
**Conversion:** No

# 46 Boxwood Ln, Daleville, Botetourt County, Virginia, United States, 24083

## 12 Floor 2 - Breakfast Area



Dimensions: 8'9" x 15'10"  
Area: 139 sq. ft  
Counted as living area: Yes

Heated: Yes  
Finished: Yes  
Enclosed: Yes  
Contiguous: Yes  
Permitted: Yes  
Wet space: No  
Addition: No  
Conversion: No

## 13 Floor 2 - Pantry



Dimensions: 7'1" x 5'6"  
Area: 35 sq. ft  
Counted as living area: Yes

Heated: Yes  
Finished: Yes  
Enclosed: Yes  
Contiguous: Yes  
Permitted: Yes  
Wet space: No  
Addition: No  
Conversion: No

## 14 Floor 2 - Living Room

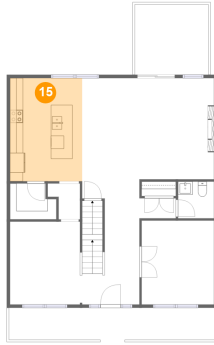


Dimensions: 11'5" x 15'6"  
Area: 177 sq. ft  
Counted as living area: Yes

Heated: Yes  
Finished: Yes  
Enclosed: Yes  
Contiguous: Yes  
Permitted: Yes  
Wet space: No  
Addition: No  
Conversion: No

# 46 Boxwood Ln, Daleville, Botetourt County, Virginia, United States, 24083

## 15 Floor 2 - Kitchen



Dimensions: 11'1" x 15'10"  
Area: 175 sq. ft  
Counted as living area: Yes

Heated: Yes  
Finished: Yes  
Enclosed: Yes  
Contiguous: Yes  
Permitted: Yes  
Wet space: No  
Addition: No  
Conversion: No

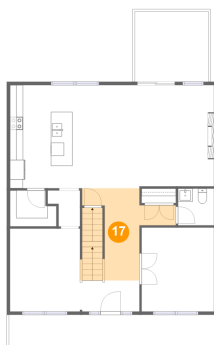
## 16 Floor 2 - Office



Dimensions: 11'1" x 12'10"  
Area: 143 sq. ft  
Counted as living area: Yes

Heated: Yes  
Finished: Yes  
Enclosed: Yes  
Contiguous: Yes  
Permitted: Yes  
Wet space: No  
Addition: No  
Conversion: No

## 17 Floor 2 - Hall

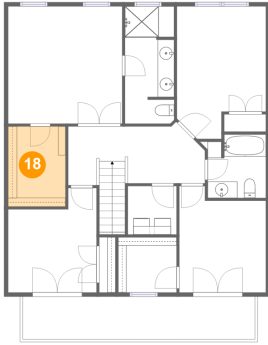


Dimensions: 8'9" x 14'1"  
Area: 139 sq. ft  
Counted as living area: Yes

Heated: Yes  
Finished: Yes  
Enclosed: Yes  
Contiguous: Yes  
Permitted: Yes  
Wet space: No  
Addition: No  
Conversion: No

# 46 Boxwood Ln, Daleville, Botetourt County, Virginia, United States, 24083

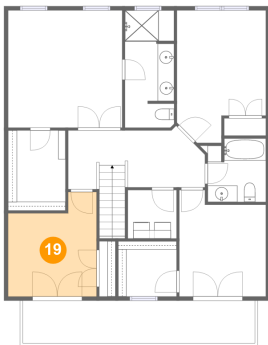
## 18 Floor 3 - W.I.C.



Dimensions: 6'11" x 9'9"  
Area: 68 sq. ft  
Counted as living area: Yes

Heated: Yes  
Finished: Yes  
Enclosed: Yes  
Contiguous: Yes  
Permitted: Yes  
Wet space: No  
Addition: No  
Conversion: No

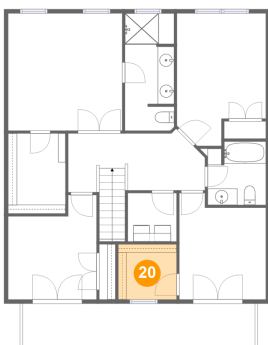
## 19 Floor 3 - Bedroom



Dimensions: 10'8" x 12'8"  
Area: 117 sq. ft  
Counted as living area: Yes

Heated: Yes  
Finished: Yes  
Enclosed: Yes  
Contiguous: Yes  
Permitted: Yes  
Wet space: No  
Addition: No  
Conversion: No

## 20 Floor 3 - W.I.C.

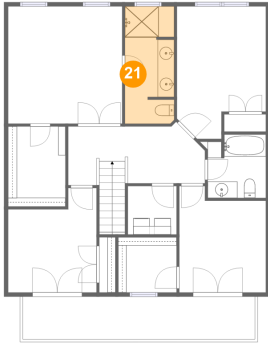


Dimensions: 7'1" x 6'8"  
Area: 47 sq. ft  
Counted as living area: Yes

Heated: Yes  
Finished: Yes  
Enclosed: Yes  
Contiguous: Yes  
Permitted: Yes  
Wet space: No  
Addition: No  
Conversion: No

# 46 Boxwood Ln, Daleville, Botetourt County, Virginia, United States, 24083

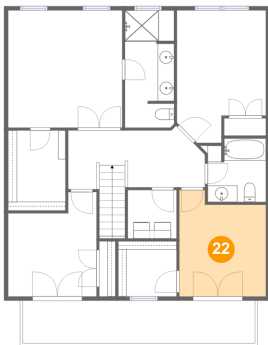
## 21 Floor 3 - Bath



Dimensions: 6'0" x 14'3"  
Area: 83 sq. ft  
Counted as living area: Yes

Heated: Yes  
Finished: Yes  
Enclosed: Yes  
Contiguous: Yes  
Permitted: Yes  
Wet space: Yes  
Addition: No  
Conversion: No

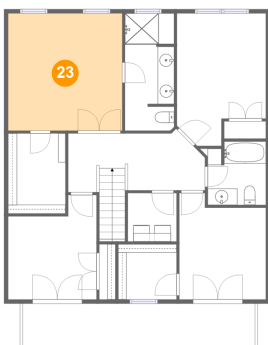
## 22 Floor 3 - Bedroom



Dimensions: 10'6" x 12'11"  
Area: 122 sq. ft  
Counted as living area: Yes

Heated: Yes  
Finished: Yes  
Enclosed: Yes  
Contiguous: Yes  
Permitted: Yes  
Wet space: No  
Addition: No  
Conversion: No

## 23 Floor 3 - Primary Bedroom

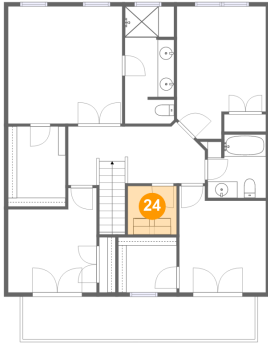


Dimensions: 13'10" x 14'3"  
Area: 197 sq. ft  
Counted as living area: Yes

Heated: Yes  
Finished: Yes  
Enclosed: Yes  
Contiguous: Yes  
Permitted: Yes  
Wet space: No  
Addition: No  
Conversion: No

# 46 Boxwood Ln, Daleville, Botetourt County, Virginia, United States, 24083

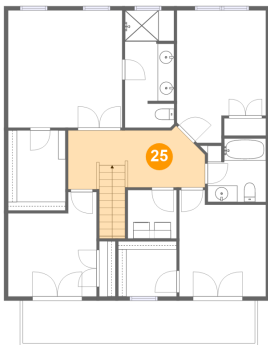
## 24 Floor 3 - Laundry



Dimensions: 5'11" x 5'10"  
Area: 35 sq. ft  
Counted as living area: Yes

Heated: Yes  
Finished: Yes  
Enclosed: Yes  
Contiguous: Yes  
Permitted: Yes  
Wet space: No  
Addition: No  
Conversion: No

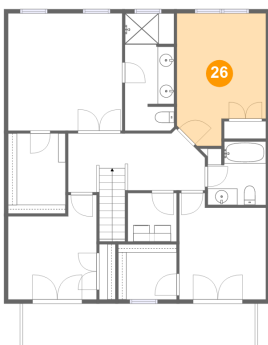
## 25 Floor 3 - Hall



Dimensions: 16'7" x 6'10"  
Area: 131 sq. ft  
Counted as living area: Yes

Heated: Yes  
Finished: Yes  
Enclosed: Yes  
Contiguous: Yes  
Permitted: Yes  
Wet space: No  
Addition: No  
Conversion: No

## 26 Floor 3 - Bedroom

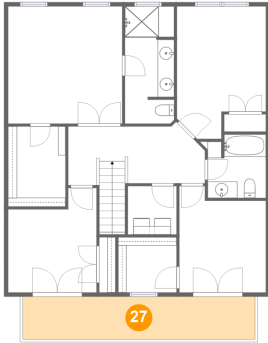


Dimensions: 10'9" x 16'1"  
Area: 153 sq. ft  
Counted as living area: Yes

Heated: Yes  
Finished: Yes  
Enclosed: Yes  
Contiguous: Yes  
Permitted: Yes  
Wet space: No  
Addition: No  
Conversion: No

# 46 Boxwood Ln, Daleville, Botetourt County, Virginia, United States, 24083

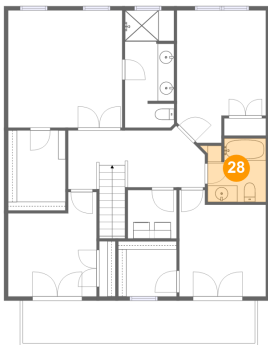
## 27 Floor 3 - Balcony



Dimensions: 28'2" x 5'2"  
Area: 146 sq. ft  
Counted as living area: No

Heated: No  
Finished: Yes  
Enclosed: No  
Contiguous: Yes  
Permitted: Yes  
Wet space: No  
Addition: No  
Conversion: No

## 28 Floor 3 - Bath



Dimensions: 7'1" x 7'8"  
Area: 52 sq. ft  
Counted as living area: Yes

Heated: Yes  
Finished: Yes  
Enclosed: Yes  
Contiguous: Yes  
Permitted: Yes  
Wet space: Yes  
Addition: No  
Conversion: No