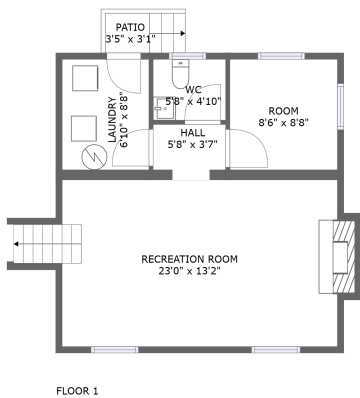
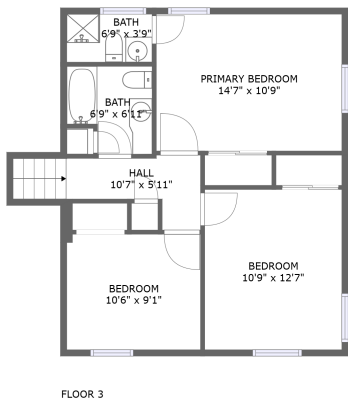
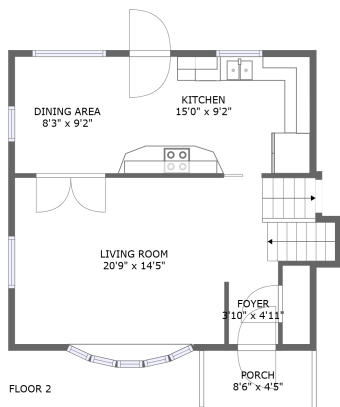



Home report

126 Frontier Road Northeast, Preston Park, Roanoke, Roanoke city, Virginia, United States, 24012




Property summary




0

Garages




3

Bedrooms



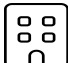
2

Bathrooms




1

Half baths




3

Floors



1,722

Gross living area sqft

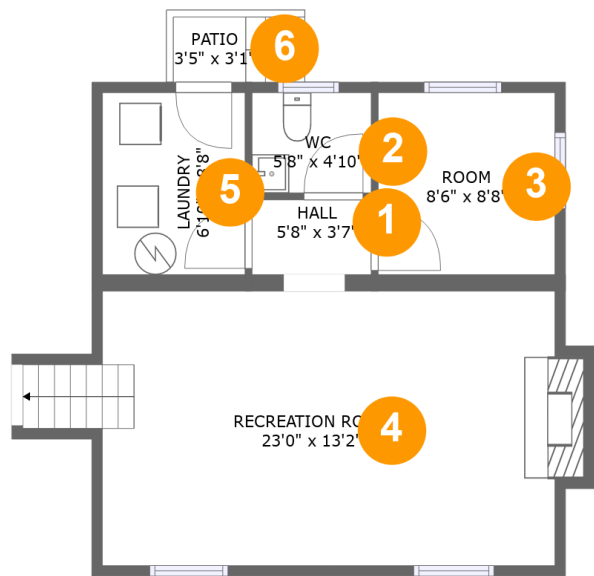


1,847

Total sqft

Home report

126 Frontier Road Northeast, Preston Park, Roanoke, Roanoke city, Virginia, United States, 24012



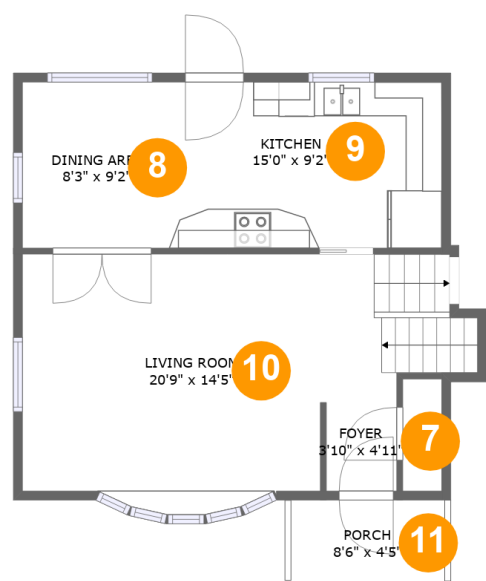
Room dimensions

Floor 1 Total sqft: 580 Living area: 493

#		Dimensions	sqft	Counted as living area
1	Hall	5'8" x 3'7"	20 sq. ft	Yes
2	WC	5'8" x 4'10"	27 sq. ft	Yes
3	Room	8'6" x 8'8"	74 sq. ft	Yes
4	Recreation Room	23'0" x 13'2"	304 sq. ft	Yes
5	Laundry	6'10" x 8'8"	59 sq. ft	No
6	Patio	3'5" x 3'1"	20 sq. ft	No

Home report

126 Frontier Road Northeast, Preston Park, Roanoke, Roanoke city, Virginia, United States, 24012



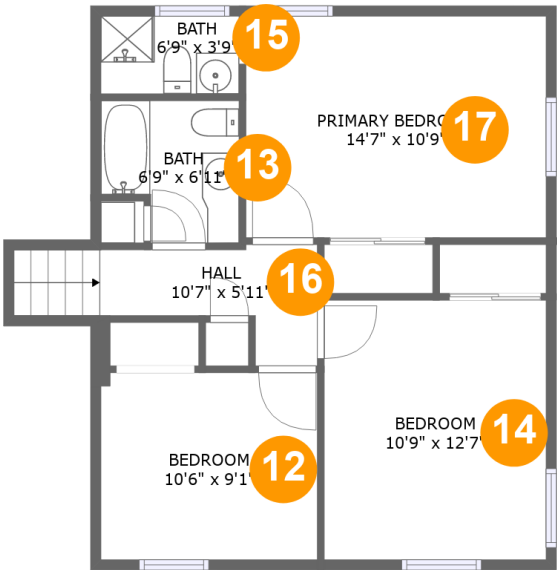
Room dimensions

Floor 2 Total sqft: 629 Living area: 591

#		Dimensions	sqft	Counted as living area
7	Foyer	3'10" x 4'11"	19 sq. ft	Yes
8	Dining Area	8'3" x 9'2"	76 sq. ft	Yes
9	Kitchen	15'0" x 9'2"	137 sq. ft	Yes
10	Living Room	20'9" x 14'5"	284 sq. ft	Yes
11	Porch	8'6" x 4'5"	38 sq. ft	No

Home report

126 Frontier Road Northeast, Preston Park, Roanoke, Roanoke city, Virginia, United States, 24012



Room dimensions

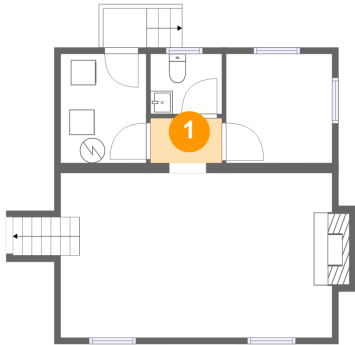
Floor 3

Total sqft: 638

Living area: 638

#		Dimensions	sqft	Counted as living area
12	Bedroom	10'6" x 9'1"	95 sq. ft	Yes
13	Bath	6'9" x 6'11"	41 sq. ft	Yes
14	Bedroom	10'9" x 12'7"	136 sq. ft	Yes
15	Bath	6'9" x 3'9"	25 sq. ft	Yes
16	Hall	10'7" x 5'11"	55 sq. ft	Yes
17	Primary Bedroom	14'7" x 10'9"	157 sq. ft	Yes

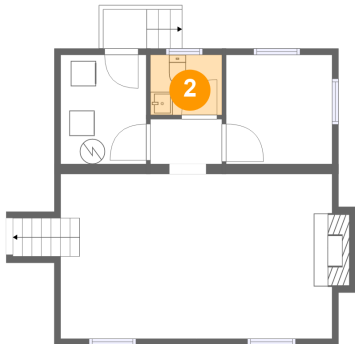
1 Floor 1 - Hall



Dimensions: 5'8" x 3'7"
Area: 20 sq. ft
Counted as living area: Yes

Heated: Yes
Finished: Yes
Enclosed: Yes
Contiguous: Yes
Permitted: Yes
Wet space: No
Addition: No
Conversion: No

2 Floor 1 - WC



Dimensions: 5'8" x 4'10"
Area: 27 sq. ft
Counted as living area: Yes

Heated: Yes
Finished: Yes
Enclosed: Yes
Contiguous: Yes
Permitted: Yes
Wet space: Yes
Addition: No
Conversion: No

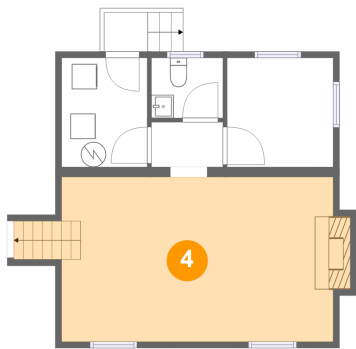
3 Floor 1 - Room



Dimensions: 8'6" x 8'8"
Area: 74 sq. ft
Counted as living area: Yes

Heated: Yes
Finished: Yes
Enclosed: Yes
Contiguous: Yes
Permitted: Yes
Wet space: No
Addition: No
Conversion: No

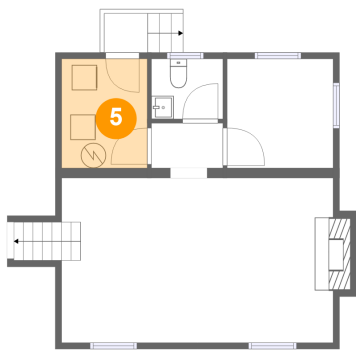
4 Floor 1 - Recreation Room



Dimensions: 23'0" x 13'2"
Area: 304 sq. ft
Counted as living area: Yes

Heated: Yes
Finished: Yes
Enclosed: Yes
Contiguous: Yes
Permitted: Yes
Wet space: No
Addition: No
Conversion: No

5 Floor 1 - Laundry



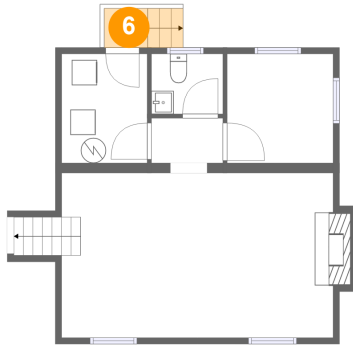
Dimensions: 6'10" x 8'8"
Area: 59 sq. ft
Counted as living area: No

Heated: Yes
Finished: No
Enclosed: Yes
Contiguous: Yes
Permitted: Yes
Wet space: No
Addition: No
Conversion: No

Home report

126 Frontier Road Northeast, Preston Park, Roanoke, Roanoke city, Virginia, United States, 24012

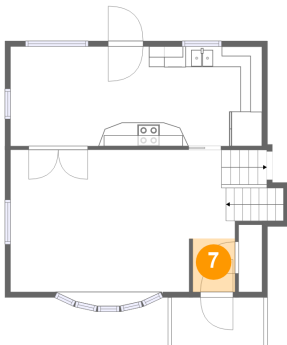
6 Floor 1 - Patio



Dimensions: 3'5" x 3'1"
Area: 20 sq. ft
Counted as living area: No

Heated: No
Finished: Yes
Enclosed: No
Contiguous: Yes
Permitted: Yes
Wet space: No
Addition: No
Conversion: No

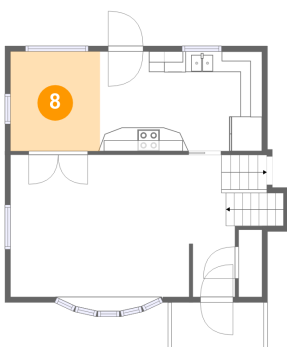
7 Floor 2 - Foyer



Dimensions: 3'10" x 4'11"
Area: 19 sq. ft
Counted as living area: Yes

Heated: Yes
Finished: Yes
Enclosed: Yes
Contiguous: Yes
Permitted: Yes
Wet space: No
Addition: No
Conversion: No

8 Floor 2 - Dining Area



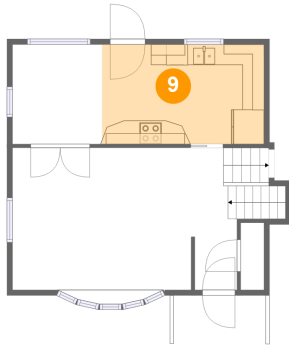
Dimensions: 8'3" x 9'2"
Area: 76 sq. ft
Counted as living area: Yes

Heated: Yes
Finished: Yes
Enclosed: Yes
Contiguous: Yes
Permitted: Yes
Wet space: No
Addition: No
Conversion: No

Home report

126 Frontier Road Northeast, Preston Park, Roanoke, Roanoke city, Virginia, United States, 24012

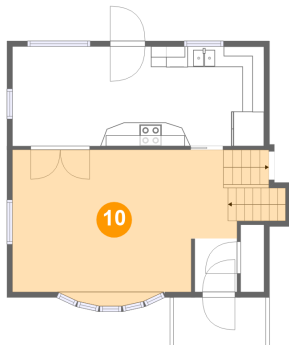
9 Floor 2 - Kitchen



Dimensions: 15'0" x 9'2"
Area: 137 sq. ft
Counted as living area: Yes

Heated: Yes
Finished: Yes
Enclosed: Yes
Contiguous: Yes
Permitted: Yes
Wet space: No
Addition: No
Conversion: No

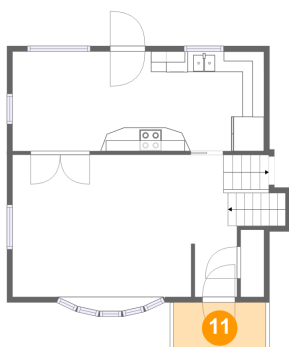
10 Floor 2 - Living Room



Dimensions: 20'9" x 14'5"
Area: 284 sq. ft
Counted as living area: Yes

Heated: Yes
Finished: Yes
Enclosed: Yes
Contiguous: Yes
Permitted: Yes
Wet space: No
Addition: No
Conversion: No

11 Floor 2 - Porch

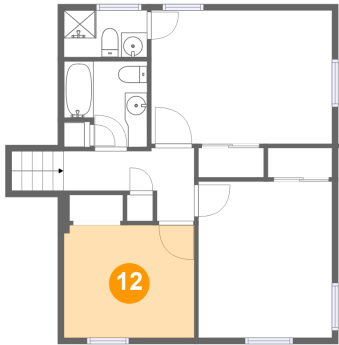


Dimensions: 8'6" x 4'5"
Area: 38 sq. ft
Counted as living area: No

Heated: No
Finished: Yes
Enclosed: No
Contiguous: Yes
Permitted: Yes
Wet space: No
Addition: No
Conversion: No

126 Frontier Road Northeast, Preston Park, Roanoke, Roanoke city, Virginia, United States, 24012

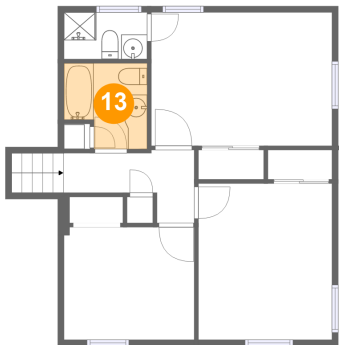
12 Floor 3 - Bedroom



Dimensions: 10'6" x 9'1"
Area: 95 sq. ft
Counted as living area: Yes

Heated: Yes
Finished: Yes
Enclosed: Yes
Contiguous: Yes
Permitted: Yes
Wet space: No
Addition: No
Conversion: No

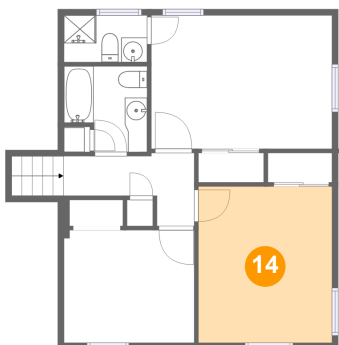
13 Floor 3 - Bath



Dimensions: 6'9" x 6'11"
Area: 41 sq. ft
Counted as living area: Yes

Heated: Yes
Finished: Yes
Enclosed: Yes
Contiguous: Yes
Permitted: Yes
Wet space: Yes
Addition: No
Conversion: No

14 Floor 3 - Bedroom

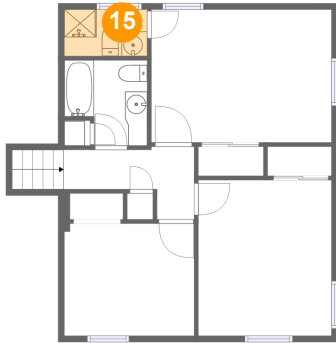


Dimensions: 10'9" x 12'7"
Area: 136 sq. ft
Counted as living area: Yes

Heated: Yes
Finished: Yes
Enclosed: Yes
Contiguous: Yes
Permitted: Yes
Wet space: No
Addition: No
Conversion: No

126 Frontier Road Northeast, Preston Park, Roanoke, Roanoke city, Virginia, United States, 24012

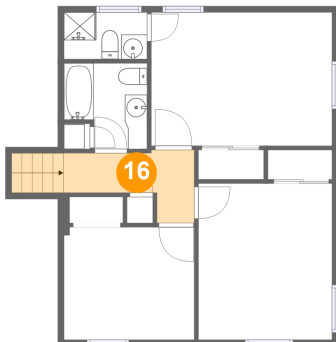
15 Floor 3 - Bath



Dimensions: 6'9" x 3'9"
Area: 25 sq. ft
Counted as living area: Yes

Heated: Yes
Finished: Yes
Enclosed: Yes
Contiguous: Yes
Permitted: Yes
Wet space: Yes
Addition: No
Conversion: No

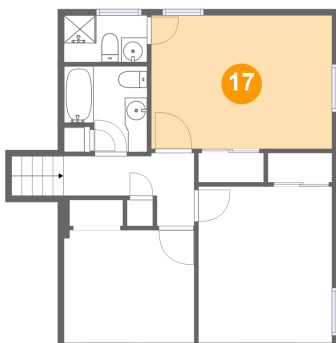
16 Floor 3 - Hall



Dimensions: 10'7" x 5'11"
Area: 55 sq. ft
Counted as living area: Yes

Heated: Yes
Finished: Yes
Enclosed: Yes
Contiguous: Yes
Permitted: Yes
Wet space: No
Addition: No
Conversion: No

17 Floor 3 - Primary Bedroom



Dimensions: 14'7" x 10'9"
Area: 157 sq. ft
Counted as living area: Yes

Heated: Yes
Finished: Yes
Enclosed: Yes
Contiguous: Yes
Permitted: Yes
Wet space: No
Addition: No
Conversion: No