


Home report


539 Westview Avenue, Bedford, Virginia, United States




Property summary

0


Garages

5

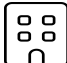
Bedrooms

2


Bathrooms

0


Half baths

4

Floors

1,788

Gross living area sqft

4,484

Total sqft

Home report

539 Westview Avenue,Bedford,Virginia,United States



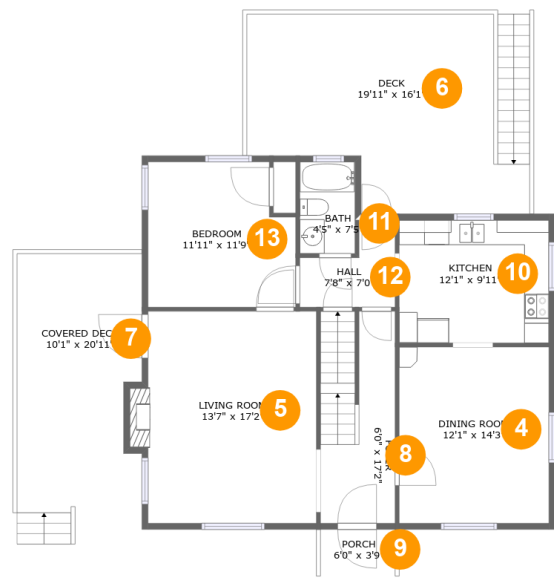
Room dimensions

Floor 1Total sqft: 1270    Living area: 0

#		Dimensions	sqft	Counted as living area
1	Basement	18'6" x 24'6"	411 sq. ft	No
2	Covered Patio	23'2" x 16'5"	335 sq. ft	No
3	Basement	16'9" x 29'2"	453 sq. ft	No

Home report

539 Westview Avenue,Bedford,Virginia,United States



Room dimensions

Floor 2

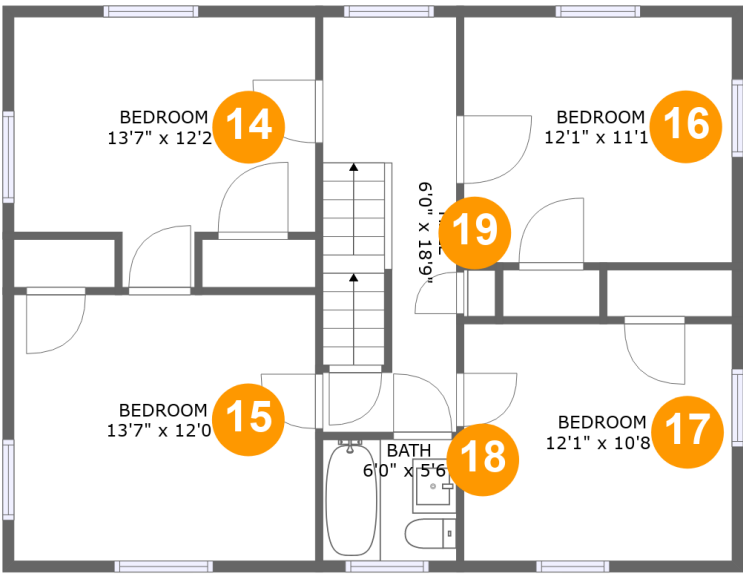
Total sqft: 1507

Living area: 935

#		Dimensions	sqft	Counted as living area
4	Dining Room	12'1" x 14'3"	172 sq. ft	Yes
5	Living Room	13'7" x 17'2"	240 sq. ft	Yes
6	Deck	19'11" x 16'1"	326 sq. ft	No
7	Covered Deck	10'1" x 20'11"	214 sq. ft	No
8	Foyer	6'0" x 17'2"	101 sq. ft	Yes
9	Porch	6'0" x 3'9"	23 sq. ft	No
10	Kitchen	12'1" x 9'11"	120 sq. ft	Yes
11	Bath	4'5" x 7'5"	33 sq. ft	Yes
12	Hall	7'8" x 7'0"	40 sq. ft	Yes
13	Bedroom	11'11" x 11'9"	131 sq. ft	Yes

Home report

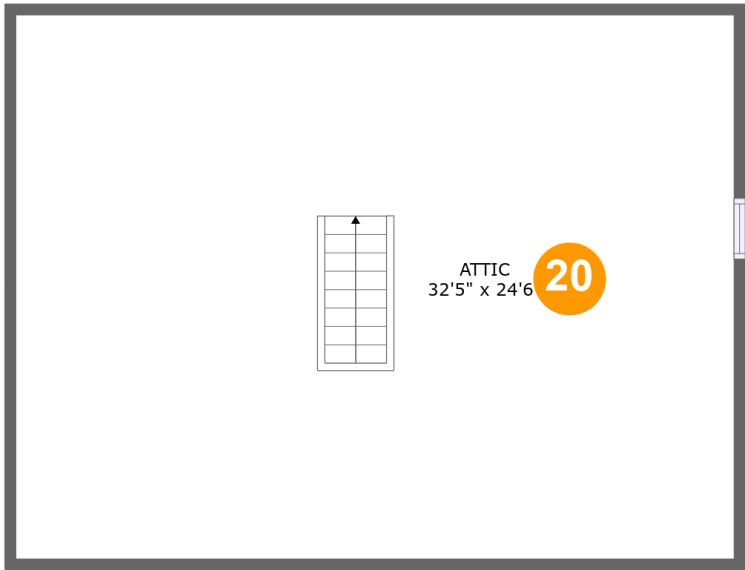
539 Westview Avenue,Bedford,Virginia,United States



Room dimensions

Floor 3 Total sqft: 853 Living area: 853

#		Dimensions	sqft	Counted as living area
14	Bedroom	13'7" x 12'2"	140 sq. ft	Yes
15	Bedroom	13'7" x 12'0"	163 sq. ft	Yes
16	Bedroom	12'1" x 11'1"	134 sq. ft	Yes
17	Bedroom	12'1" x 10'8"	129 sq. ft	Yes
18	Bath	6'0" x 5'6"	33 sq. ft	Yes
19	Hall	6'0" x 18'9"	110 sq. ft	Yes



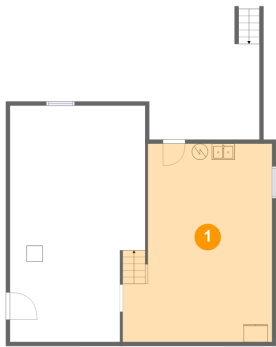
Room dimensions

Floor 4

Total sqft: 854    Living area: 0

#		Dimensions	sqft	Counted as living area
20	Attic	32'5" x 24'6"	413 sq. ft	No

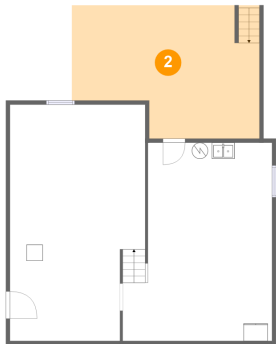
1 Floor 1 - Basement



Dimensions: 18'6" x 24'6"  
Area: 411 sq. ft  
Counted as living area: No

Heated: Yes  
Finished: No  
Enclosed: Yes  
Contiguous: Yes  
Permitted: Yes  
Wet space: No  
Addition: No  
Conversion: No

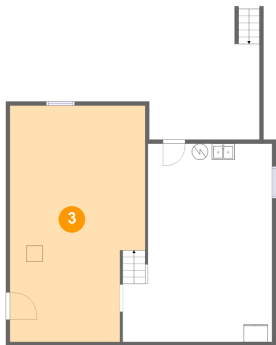
2 Floor 1 - Covered Patio



Dimensions: 23'2" x 16'5"  
Area: 335 sq. ft  
Counted as living area: No

Heated: No  
Finished: Yes  
Enclosed: No  
Contiguous: Yes  
Permitted: Yes  
Wet space: No  
Addition: No  
Conversion: No

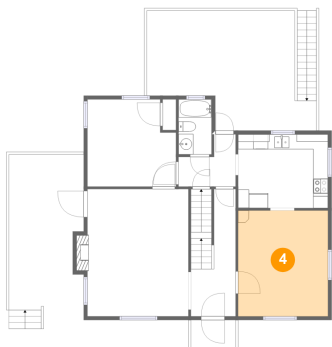
3 Floor 1 - Basement



Dimensions: 16'9" x 29'2"  
Area: 453 sq. ft  
Counted as living area: No

Heated: Yes  
Finished: No  
Enclosed: Yes  
Contiguous: Yes  
Permitted: Yes  
Wet space: No  
Addition: No  
Conversion: No

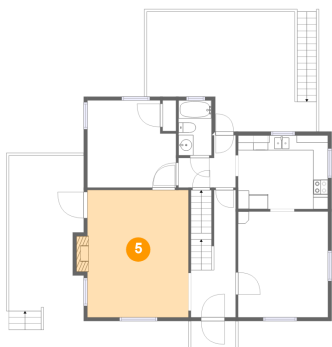
4 Floor 2 - Dining Room



Dimensions: 12'1" x 14'3"  
Area: 172 sq. ft  
Counted as living area: Yes

Heated: Yes  
Finished: Yes  
Enclosed: Yes  
Contiguous: Yes  
Permitted: Yes  
Wet space: No  
Addition: No  
Conversion: No

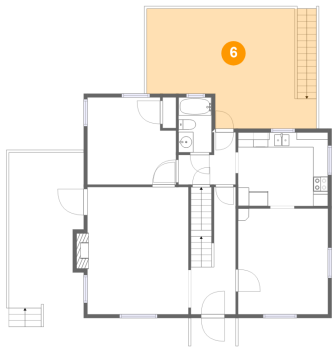
5 Floor 2 - Living Room



Dimensions: 13'7" x 17'2"  
Area: 240 sq. ft  
Counted as living area: Yes

Heated: Yes  
Finished: Yes  
Enclosed: Yes  
Contiguous: Yes  
Permitted: Yes  
Wet space: No  
Addition: No  
Conversion: No

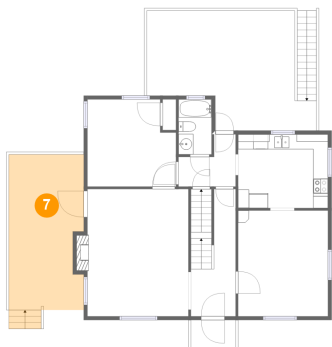
6 Floor 2 - Deck



Dimensions: 19'11" x 16'1"  
Area: 326 sq. ft  
Counted as living area: No

Heated: No  
Finished: Yes  
Enclosed: No  
Contiguous: Yes  
Permitted: Yes  
Wet space: No  
Addition: No  
Conversion: No

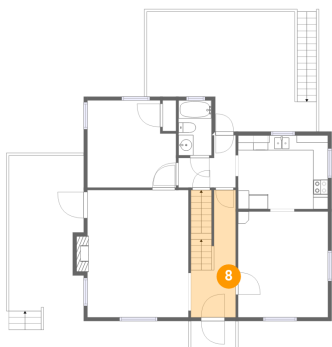
7 Floor 2 - Covered Deck



Dimensions: 10'1" x 20'11"  
Area: 214 sq. ft  
Counted as living area: No

Heated: No  
Finished: Yes  
Enclosed: No  
Contiguous: Yes  
Permitted: Yes  
Wet space: No  
Addition: No  
Conversion: No

8 Floor 2 - Foyer

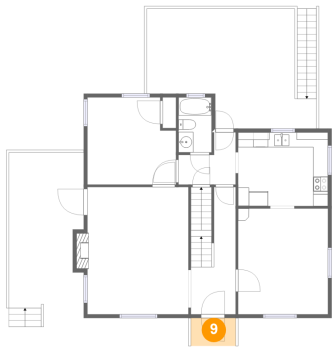


Dimensions: 6'0" x 17'2"  
Area: 101 sq. ft  
Counted as living area: Yes

Heated: Yes  
Finished: Yes  
Enclosed: Yes  
Contiguous: Yes  
Permitted: Yes  
Wet space: No  
Addition: No  
Conversion: No



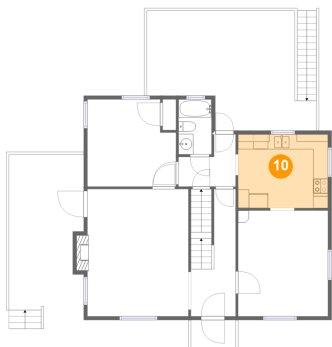
9 Floor 2 - Porch



Dimensions: 6'0" x 3'9"  
Area: 23 sq. ft  
Counted as living area: No

Heated: No  
Finished: Yes  
Enclosed: No  
Contiguous: Yes  
Permitted: Yes  
Wet space: No  
Addition: No  
Conversion: No

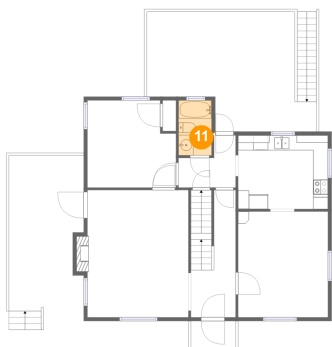
10 Floor 2 - Kitchen



Dimensions: 12'1" x 9'11"  
Area: 120 sq. ft  
Counted as living area: Yes

Heated: Yes  
Finished: Yes  
Enclosed: Yes  
Contiguous: Yes  
Permitted: Yes  
Wet space: No  
Addition: No  
Conversion: No

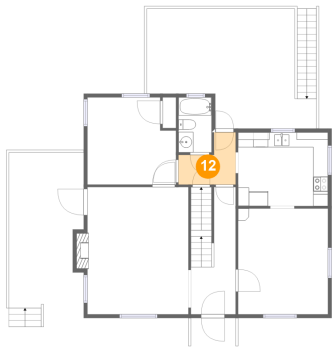
11 Floor 2 - Bath



Dimensions: 4'5" x 7'5"  
Area: 33 sq. ft  
Counted as living area: Yes

Heated: Yes  
Finished: Yes  
Enclosed: Yes  
Contiguous: Yes  
Permitted: Yes  
Wet space: Yes  
Addition: No  
Conversion: No

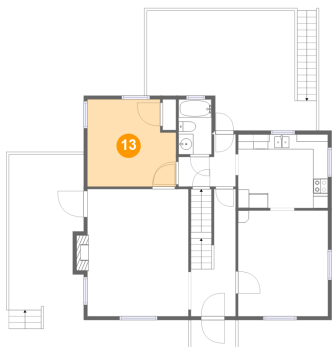
12 Floor 2 - Hall



Dimensions: 7'8" x 7'0"  
Area: 40 sq. ft  
Counted as living area: Yes

Heated: Yes  
Finished: Yes  
Enclosed: Yes  
Contiguous: Yes  
Permitted: Yes  
Wet space: No  
Addition: No  
Conversion: No

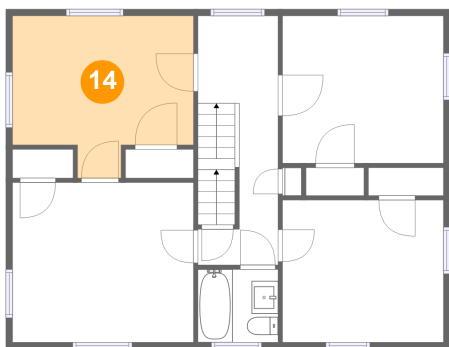
13 Floor 2 - Bedroom



Dimensions: 11'11" x 11'9"  
Area: 131 sq. ft  
Counted as living area: Yes

Heated: Yes  
Finished: Yes  
Enclosed: Yes  
Contiguous: Yes  
Permitted: Yes  
Wet space: No  
Addition: No  
Conversion: No

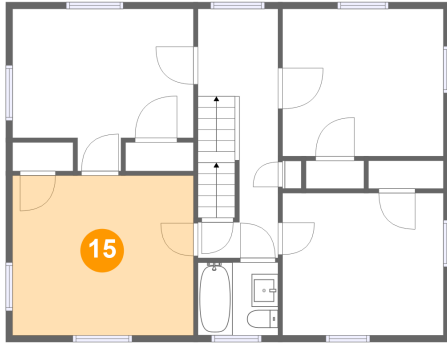
14 Floor 3 - Bedroom



Dimensions: 13'7" x 12'2"  
Area: 140 sq. ft  
Counted as living area: Yes

Heated: Yes  
Finished: Yes  
Enclosed: Yes  
Contiguous: Yes  
Permitted: Yes  
Wet space: No  
Addition: No  
Conversion: No

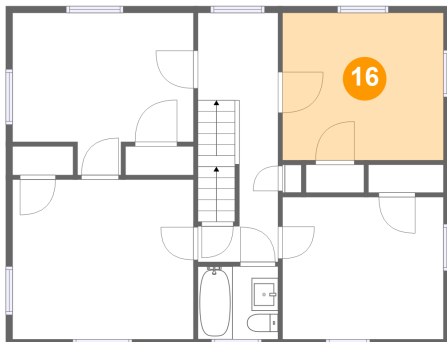
### 15 Floor 3 - Bedroom



Dimensions: 13'7" x 12'0"  
Area: 163 sq. ft  
Counted as living area: Yes

Heated: Yes  
Finished: Yes  
Enclosed: Yes  
Contiguous: Yes  
Permitted: Yes  
Wet space: No  
Addition: No  
Conversion: No

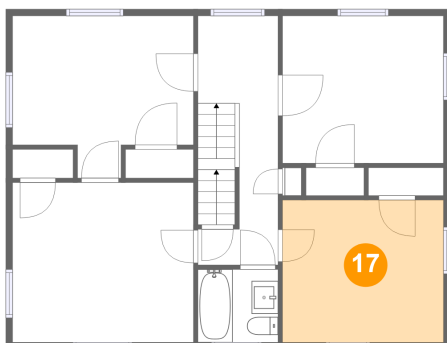
### 16 Floor 3 - Bedroom



Dimensions: 12'1" x 11'1"  
Area: 134 sq. ft  
Counted as living area: Yes

Heated: Yes  
Finished: Yes  
Enclosed: Yes  
Contiguous: Yes  
Permitted: Yes  
Wet space: No  
Addition: No  
Conversion: No

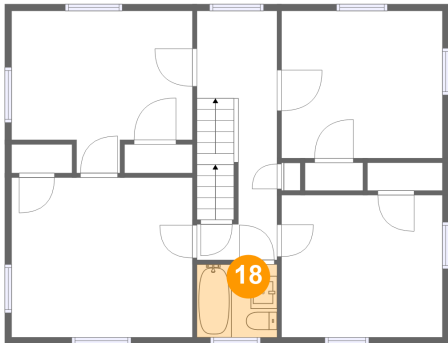
### 17 Floor 3 - Bedroom



Dimensions: 12'1" x 10'8"  
Area: 129 sq. ft  
Counted as living area: Yes

Heated: Yes  
Finished: Yes  
Enclosed: Yes  
Contiguous: Yes  
Permitted: Yes  
Wet space: No  
Addition: No  
Conversion: No

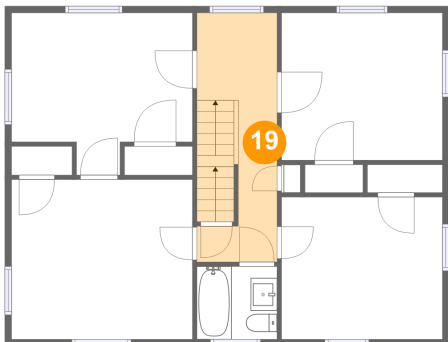
18 Floor 3 - Bath



Dimensions: 6'0" x 5'6"  
Area: 33 sq. ft  
Counted as living area: Yes

Heated: Yes  
Finished: Yes  
Enclosed: Yes  
Contiguous: Yes  
Permitted: Yes  
Wet space: Yes  
Addition: No  
Conversion: No

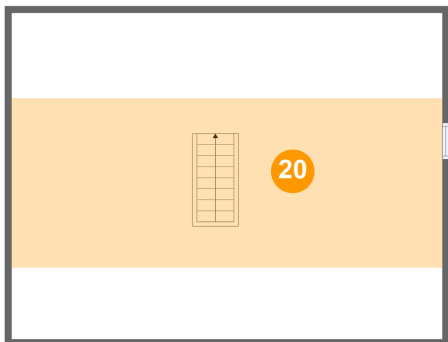
19 Floor 3 - Hall



Dimensions: 6'0" x 18'9"  
Area: 110 sq. ft  
Counted as living area: Yes

Heated: Yes  
Finished: Yes  
Enclosed: Yes  
Contiguous: Yes  
Permitted: Yes  
Wet space: No  
Addition: No  
Conversion: No

20 Floor 4 - Attic



Dimensions: 32'5" x 24'6"  
Area: 413 sq. ft  
Counted as living area: No

Heated: No  
Finished: No  
Enclosed: Yes  
Contiguous: Yes  
Permitted: Yes  
Wet space: No  
Addition: No  
Conversion: No