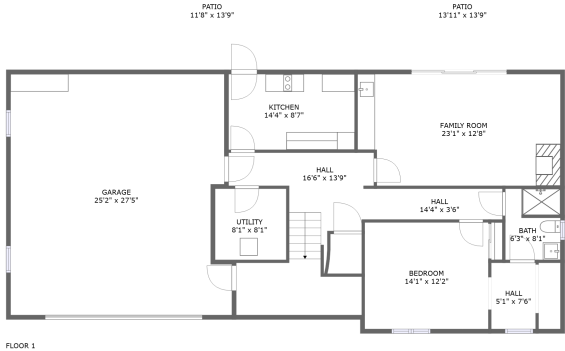
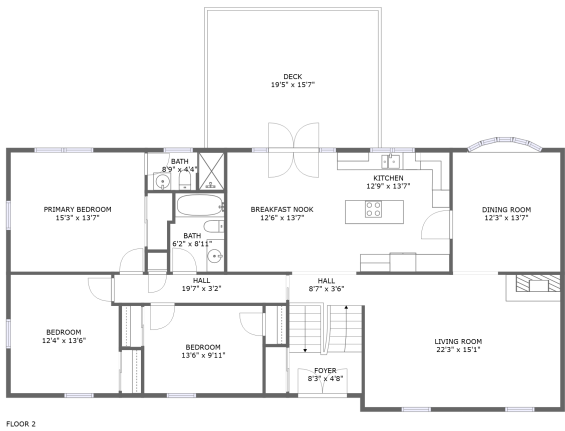



Home report


2652 Thorntree Drive, Upper Saint Clair, Pennsylvania 15241,
United States



Property summary

 **1** Garages

 **4** Bedrooms

 **3** Bathrooms

 **0** Half baths

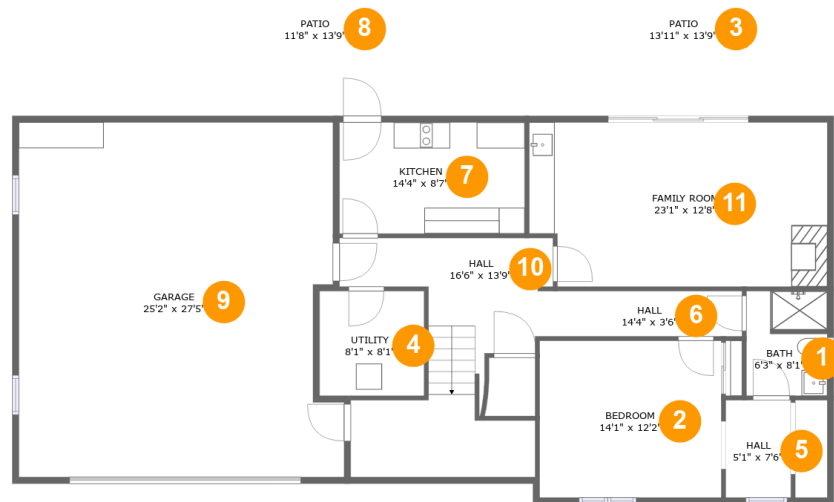
 **2** Floors

 **2,926** Gross living area sqft

 **4,352** Total sqft

Home report

2652 Thorntree Drive, Upper Saint Clair, Pennsylvania 15241, United States



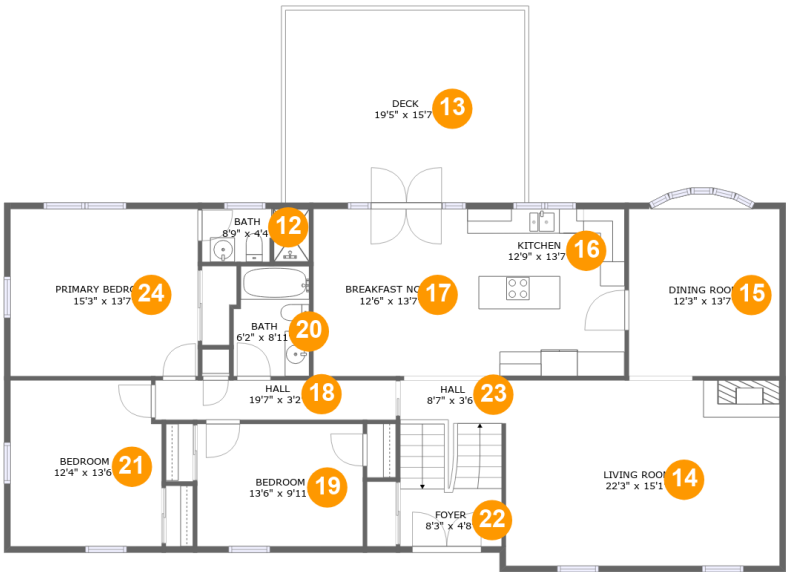
Room dimensions

Floor 1 Total sqft: 2196 Living area: 1075

#		Dimensions	sqft	Counted as living area
1	Bath	6'3" x 8'1"	49 sq. ft	Yes
2	Bedroom	14'1" x 12'2"	171 sq. ft	Yes
3	Patio	13'11" x 13'9"	191 sq. ft	No
4	Utility	8'1" x 8'1"	66 sq. ft	No
5	Hall	5'1" x 7'6"	38 sq. ft	Yes
6	Hall	14'4" x 3'6"	50 sq. ft	Yes
7	Kitchen	14'4" x 8'7"	123 sq. ft	Yes
8	Patio	11'8" x 13'9"	161 sq. ft	No
9	Garage	25'2" x 27'5"	658 sq. ft	No
10	Hall	16'6" x 13'9"	204 sq. ft	Yes
11	Family Room	23'1" x 12'8"	284 sq. ft	Yes

Home report

2652 Thorntree Drive, Upper Saint Clair, Pennsylvania 15241, United States



Room dimensions

Floor 2 Total sqft: 2156 Living area: 1851

#		Dimensions	sqft	Counted as living area
12	Bath	8'9" x 4'4"	37 sq. ft	Yes
13	Deck	19'5" x 15'7"	305 sq. ft	No
14	Living Room	22'3" x 15'1"	336 sq. ft	Yes
15	Dining Room	12'3" x 13'7"	174 sq. ft	Yes
16	Kitchen	12'9" x 13'7"	174 sq. ft	Yes
17	Breakfast Nook	12'6" x 13'7"	170 sq. ft	Yes
18	Hall	19'7" x 3'2"	63 sq. ft	Yes
19	Bedroom	13'6" x 9'11"	134 sq. ft	Yes
20	Bath	6'2" x 8'11"	53 sq. ft	Yes
21	Bedroom	12'4" x 13'6"	163 sq. ft	Yes
22	Foyer	8'3" x 4'8"	39 sq. ft	Yes

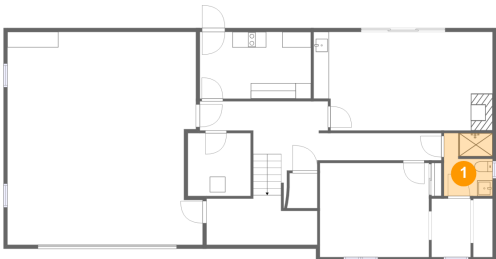
Home report

2652 Thorntree Drive, Upper Saint Clair, Pennsylvania 15241,
United States

#		Dimensions	sqft	Counted as living area
23	Hall	8'7" x 3'6"	74 sq. ft	Yes
24	Primary Bedroom	15'3" x 13'7"	207 sq. ft	Yes

2652 Thorntree Drive, Upper Saint Clair, Pennsylvania 15241,
United States

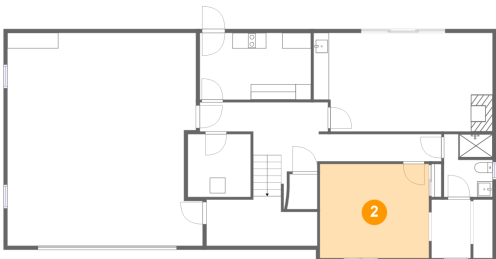
1 Floor 1 - Bath



Dimensions: 6'3" x 8'1"
Area: 49 sq. ft
Counted as living area: Yes

Heated: Yes
Finished: Yes
Enclosed: Yes
Contiguous: Yes
Permitted: Yes
Wet space: Yes
Addition: No
Conversion: No

2 Floor 1 - Bedroom

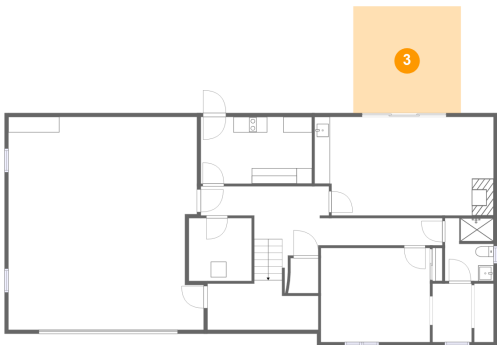


Dimensions: 14'1" x 12'2"
Area: 171 sq. ft
Counted as living area: Yes

Heated: Yes
Finished: Yes
Enclosed: Yes
Contiguous: Yes
Permitted: Yes
Wet space: No
Addition: No
Conversion: No

2652 Thorntree Drive, Upper Saint Clair, Pennsylvania 15241, United States

3 Floor 1 - Patio



Dimensions: 13'11" x 13'9"
Area: 191 sq. ft
Counted as living area: No

Heated: No
Finished: Yes
Enclosed: No
Contiguous: Yes
Permitted: Yes
Wet space: No
Addition: No
Conversion: No

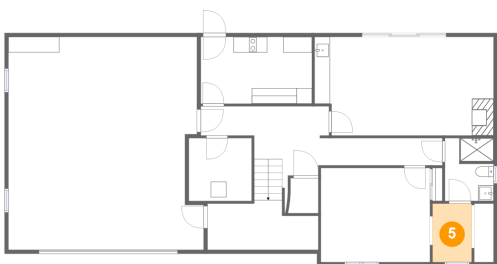
4 Floor 1 - Utility



Dimensions: 8'1" x 8'1"
Area: 66 sq. ft
Counted as living area: No

Heated: Yes
Finished: No
Enclosed: Yes
Contiguous: Yes
Permitted: Yes
Wet space: No
Addition: No
Conversion: No

5 Floor 1 - Hall

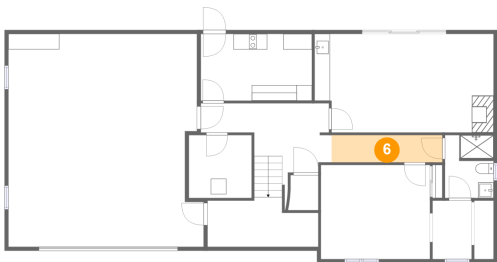


Dimensions: 5'1" x 7'6"
Area: 38 sq. ft
Counted as living area: Yes

Heated: Yes
Finished: Yes
Enclosed: Yes
Contiguous: Yes
Permitted: Yes
Wet space: No
Addition: No
Conversion: No

2652 Thorntree Drive, Upper Saint Clair, Pennsylvania 15241, United States

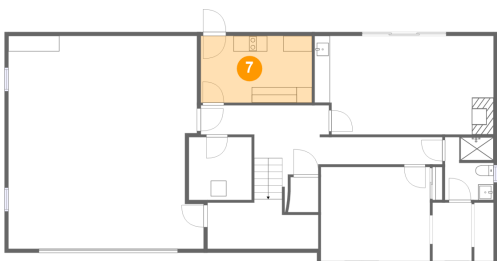
6 Floor 1 - Hall



Dimensions: 14'4" x 3'6"
Area: 50 sq. ft
Counted as living area: Yes

Heated: Yes
Finished: Yes
Enclosed: Yes
Contiguous: Yes
Permitted: Yes
Wet space: No
Addition: No
Conversion: No

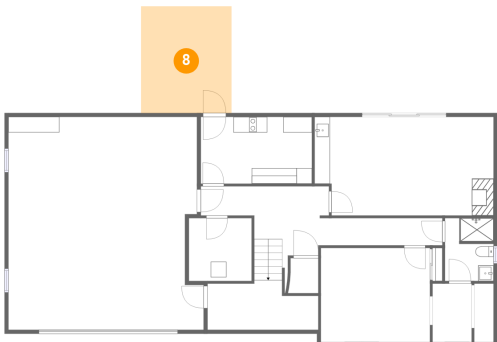
7 Floor 1 - Kitchen



Dimensions: 14'4" x 8'7"
Area: 123 sq. ft
Counted as living area: Yes

Heated: Yes
Finished: Yes
Enclosed: Yes
Contiguous: Yes
Permitted: Yes
Wet space: No
Addition: No
Conversion: No

8 Floor 1 - Patio

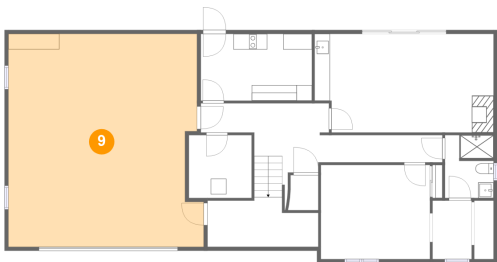


Dimensions: 11'8" x 13'9"
Area: 161 sq. ft
Counted as living area: No

Heated: No
Finished: Yes
Enclosed: No
Contiguous: Yes
Permitted: Yes
Wet space: No
Addition: No
Conversion: No

2652 Thorntree Drive, Upper Saint Clair, Pennsylvania 15241, United States

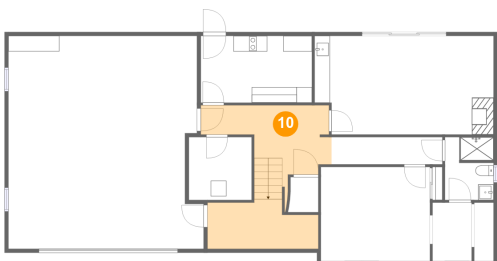
9 Floor 1 - Garage



Dimensions: 25'2" x 27'5"
Area: 658 sq. ft
Counted as living area: No

Heated: No
Finished: No
Enclosed: Yes
Contiguous: Yes
Permitted: Yes
Wet space: No
Addition: No
Conversion: No

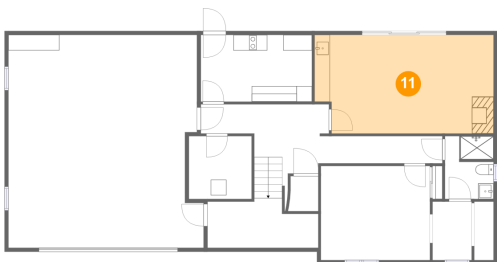
10 Floor 1 - Hall



Dimensions: 16'6" x 13'9"
Area: 204 sq. ft
Counted as living area: Yes

Heated: Yes
Finished: Yes
Enclosed: Yes
Contiguous: Yes
Permitted: Yes
Wet space: No
Addition: No
Conversion: No

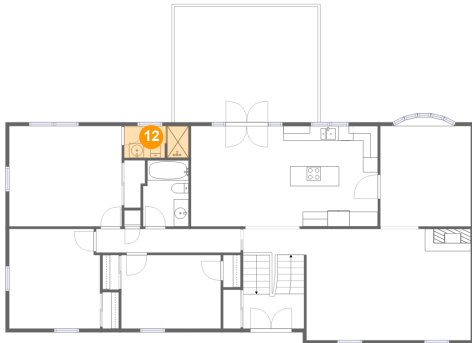
11 Floor 1 - Family Room



Dimensions: 23'1" x 12'8"
Area: 284 sq. ft
Counted as living area: Yes

Heated: Yes
Finished: Yes
Enclosed: Yes
Contiguous: Yes
Permitted: Yes
Wet space: No
Addition: No
Conversion: No

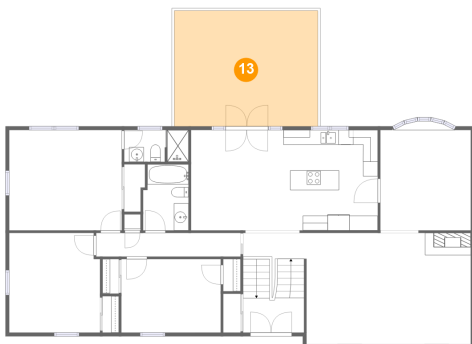
12 Floor 2 - Bath



Dimensions: 8'9" x 4'4"
Area: 37 sq. ft
Counted as living area: Yes

Heated: Yes
Finished: Yes
Enclosed: Yes
Contiguous: Yes
Permitted: Yes
Wet space: Yes
Addition: No
Conversion: No

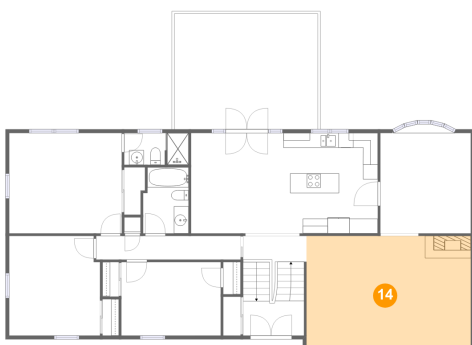
13 Floor 2 - Deck



Dimensions: 19'5" x 15'7"
Area: 305 sq. ft
Counted as living area: No

Heated: No
Finished: Yes
Enclosed: No
Contiguous: Yes
Permitted: Yes
Wet space: No
Addition: No
Conversion: No

14 Floor 2 - Living Room

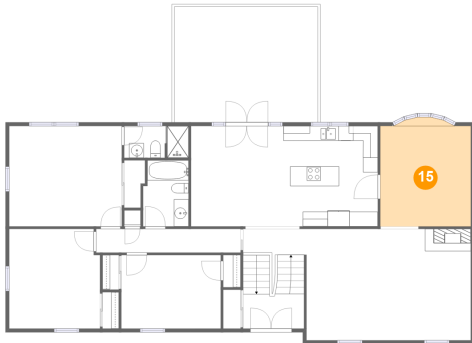


Dimensions: 22'3" x 15'1"
Area: 336 sq. ft
Counted as living area: Yes

Heated: Yes
Finished: Yes
Enclosed: Yes
Contiguous: Yes
Permitted: Yes
Wet space: No
Addition: No
Conversion: No

2652 Thorntree Drive, Upper Saint Clair, Pennsylvania 15241,
United States

15 Floor 2 - Dining Room



Dimensions: 12'3" x 13'7"
Area: 174 sq. ft
Counted as living area: Yes

Heated: Yes
Finished: Yes
Enclosed: Yes
Contiguous: Yes
Permitted: Yes
Wet space: No
Addition: No
Conversion: No

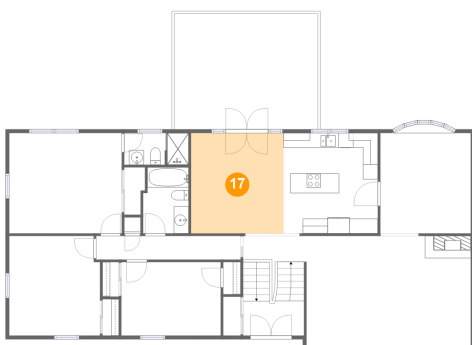
16 Floor 2 - Kitchen



Dimensions: 12'9" x 13'7"
Area: 174 sq. ft
Counted as living area: Yes

Heated: Yes
Finished: Yes
Enclosed: Yes
Contiguous: Yes
Permitted: Yes
Wet space: No
Addition: No
Conversion: No

17 Floor 2 - Breakfast Nook



Dimensions: 12'6" x 13'7"
Area: 170 sq. ft
Counted as living area: Yes

Heated: Yes
Finished: Yes
Enclosed: Yes
Contiguous: Yes
Permitted: Yes
Wet space: No
Addition: No
Conversion: No

2652 Thorntree Drive, Upper Saint Clair, Pennsylvania 15241,
United States

18 Floor 2 - Hall



Dimensions: 19'7" x 3'2"
Area: 63 sq. ft
Counted as living area: Yes

Heated: Yes
Finished: Yes
Enclosed: Yes
Contiguous: Yes
Permitted: Yes
Wet space: No
Addition: No
Conversion: No

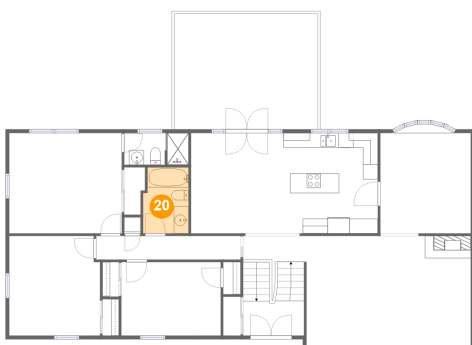
19 Floor 2 - Bedroom



Dimensions: 13'6" x 9'11"
Area: 134 sq. ft
Counted as living area: Yes

Heated: Yes
Finished: Yes
Enclosed: Yes
Contiguous: Yes
Permitted: Yes
Wet space: No
Addition: No
Conversion: No

20 Floor 2 - Bath



Dimensions: 6'2" x 8'11"
Area: 53 sq. ft
Counted as living area: Yes

Heated: Yes
Finished: Yes
Enclosed: Yes
Contiguous: Yes
Permitted: Yes
Wet space: Yes
Addition: No
Conversion: No

2652 Thorntree Drive, Upper Saint Clair, Pennsylvania 15241,
United States

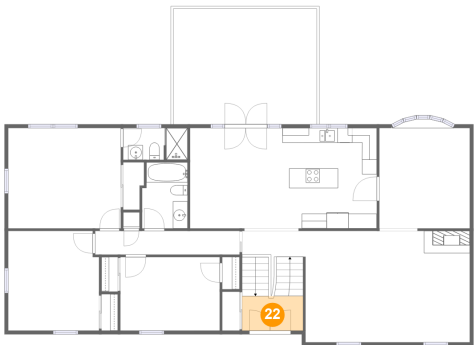
21 Floor 2 - Bedroom



Dimensions: 12'4" x 13'6"
Area: 163 sq. ft
Counted as living area: Yes

Heated: Yes
Finished: Yes
Enclosed: Yes
Contiguous: Yes
Permitted: Yes
Wet space: No
Addition: No
Conversion: No

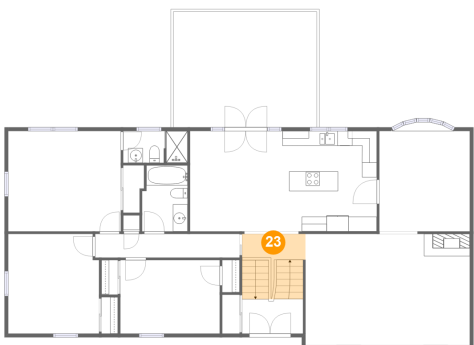
22 Floor 2 - Foyer



Dimensions: 8'3" x 4'8"
Area: 39 sq. ft
Counted as living area: Yes

Heated: Yes
Finished: Yes
Enclosed: Yes
Contiguous: Yes
Permitted: Yes
Wet space: No
Addition: No
Conversion: No

23 Floor 2 - Hall



Dimensions: 8'7" x 3'6"
Area: 74 sq. ft
Counted as living area: Yes

Heated: Yes
Finished: Yes
Enclosed: Yes
Contiguous: Yes
Permitted: Yes
Wet space: No
Addition: No
Conversion: No

2652 Thorntree Drive, Upper Saint Clair, Pennsylvania 15241,
United States

24 Floor 2 - Primary Bedroom



Dimensions: 15'3" x 13'7"
Area: 207 sq. ft
Counted as living area: Yes

Heated: Yes
Finished: Yes
Enclosed: Yes
Contiguous: Yes
Permitted: Yes
Wet space: No
Addition: No
Conversion: No