

Home report

12931 Catawba Road, Troutville, Botetourt County, Virginia,  
United States, 24175




Total Area: 1487 sq. ft

Below Ground: 0 sq. ft, Floor 2: 1487 sq. ft

Excluded: Basement 816 sq. ft, Laundry 102 sq. ft, Porch 58 sq. ft, Entry 47 sq. ft, Walls: 159 sq. ft

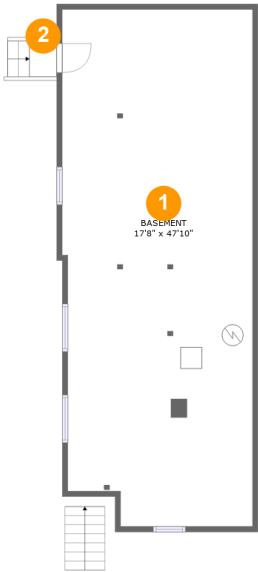
Property summary

 2 Floors

 2 Bedrooms

 1 Bathrooms

12931 Catawba Road, Troutville, Botetourt County, Virginia,  
United States, 24175



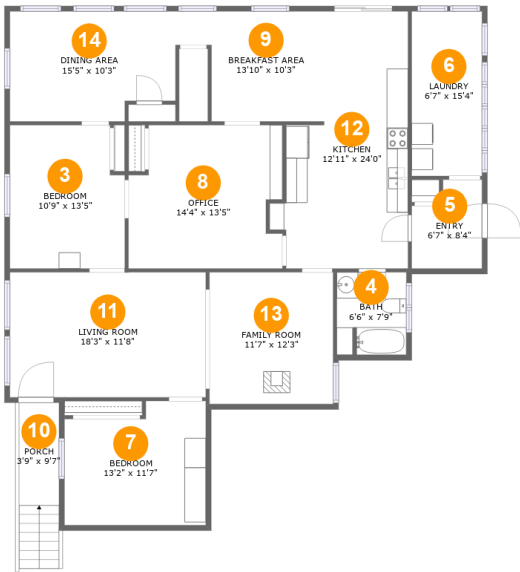
Room dimensions

Floor 1 Below ground Total:0sqft Excluded: 816sqft

| # |          | Max Dimensions | sqft       | Included |
|---|----------|----------------|------------|----------|
| 1 | Basement | 17'8" x 47'10" | 816 sq. ft | No       |
| 2 | Outdoor  | 2'6" x 3'3"    | 15 sq. ft  | No       |

Home report

12931 Catawba Road, Troutville, Botetourt County, Virginia,  
United States, 24175



Room dimensions

Floor 2Total:1487sqft   Excluded: 207sqft

| #  |                | Max Dimensions | sqft       | Included |
|----|----------------|----------------|------------|----------|
| 3  | Bedroom        | 10'9" x 13'5"  | 137 sq. ft | Yes      |
| 4  | Bath           | 6'6" x 7'9"    | 49 sq. ft  | Yes      |
| 5  | Entry          | 6'7" x 8'4"    | 47 sq. ft  | No       |
| 6  | Laundry        | 6'7" x 15'4"   | 101 sq. ft | No       |
| 7  | Bedroom        | 13'2" x 11'7"  | 140 sq. ft | Yes      |
| 8  | Office         | 14'4" x 13'5"  | 179 sq. ft | Yes      |
| 9  | Breakfast Area | 13'10" x 10'3" | 118 sq. ft | Yes      |
| 10 | Porch          | 3'9" x 9'7"    | 58 sq. ft  | No       |
| 11 | Living Room    | 18'3" x 11'8"  | 213 sq. ft | Yes      |
| 12 | Kitchen        | 12'11" x 24'0" | 239 sq. ft | Yes      |
| 13 | Family Room    | 11'7" x 12'3"  | 142 sq. ft | Yes      |

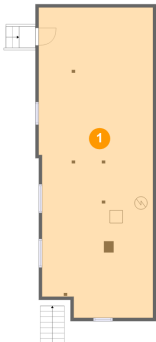
Home report

12931 Catawba Road, Troutville, Botetourt County, Virginia,  
United States, 24175

| #  |             | Max Dimensions | sqft       | Included |
|----|-------------|----------------|------------|----------|
| 14 | Dining Area | 15'5" x 10'3"  | 150 sq. ft | Yes      |

12931 Catawba Road, Troutville, Botetourt County, Virginia,  
United States, 24175

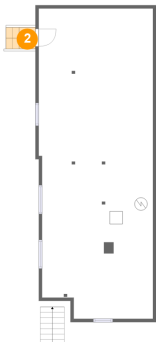
1 Floor 1 - Basement



Max Dimensions: 17'8" x 47'10"  
Calculated Area: 816 sq. ft  
Included: No

Heated: Yes  
Finished: No  
Enclosed: Yes  
Contiguous: Yes  
Permitted: Yes  
Wet space: No  
Addition: No  
Conversion: No

2 Floor 1 - Outdoor

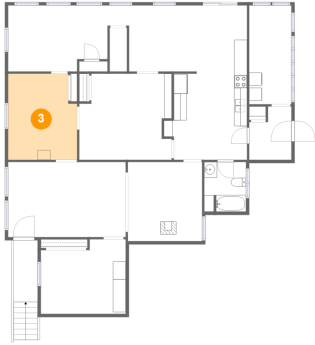


Max Dimensions: 2'6" x 3'3"  
Calculated Area: 15 sq. ft  
Included: No

Heated: No  
Finished: No  
Enclosed: No  
Contiguous: Yes  
Permitted: No  
Wet space: No  
Addition: No  
Conversion: No

12931 Catawba Road, Troutville, Botetourt County, Virginia,  
United States, 24175

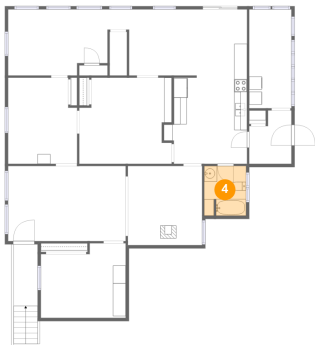
### 3 Floor 2 - Bedroom



Max Dimensions: 10'9" x 13'5"  
Calculated Area: 137 sq. ft  
Included: Yes

Heated: Yes  
Finished: Yes  
Enclosed: Yes  
Contiguous: Yes  
Permitted: Yes  
Wet space: No  
Addition: No  
Conversion: No

### 4 Floor 2 - Bath



Max Dimensions: 6'6" x 7'9"  
Calculated Area: 49 sq. ft  
Included: Yes

Heated: Yes  
Finished: Yes  
Enclosed: Yes  
Contiguous: Yes  
Permitted: Yes  
Wet space: Yes  
Addition: No  
Conversion: No

### 5 Floor 2 - Entry

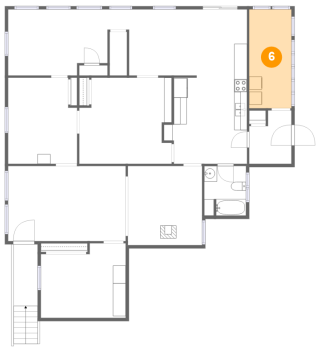


Max Dimensions: 6'7" x 8'4"  
Calculated Area: 47 sq. ft  
Included: No

Heated: Yes  
Finished: No  
Enclosed: Yes  
Contiguous: Yes  
Permitted: Yes  
Wet space: No  
Addition: No  
Conversion: No

12931 Catawba Road, Troutville, Botetourt County, Virginia,  
United States, 24175

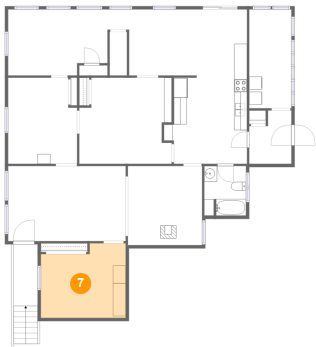
6 Floor 2 - Laundry



Max Dimensions: 6'7" x 15'4"  
Calculated Area: 101 sq. ft  
Included: No

Heated: Yes  
Finished: No  
Enclosed: Yes  
Contiguous: Yes  
Permitted: Yes  
Wet space: No  
Addition: No  
Conversion: No

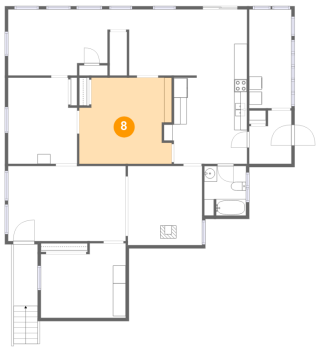
7 Floor 2 - Bedroom



Max Dimensions: 13'2" x 11'7"  
Calculated Area: 140 sq. ft  
Included: Yes

Heated: Yes  
Finished: Yes  
Enclosed: Yes  
Contiguous: Yes  
Permitted: Yes  
Wet space: No  
Addition: No  
Conversion: No

8 Floor 2 - Office

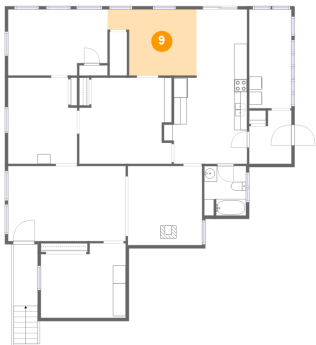


Max Dimensions: 14'4" x 13'5"  
Calculated Area: 179 sq. ft  
Included: Yes

Heated: Yes  
Finished: Yes  
Enclosed: Yes  
Contiguous: Yes  
Permitted: Yes  
Wet space: No  
Addition: No  
Conversion: No

12931 Catawba Road, Troutville, Botetourt County, Virginia,  
United States, 24175

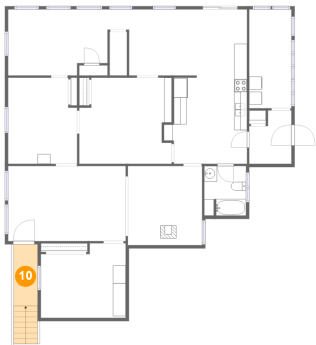
9 Floor 2 - Breakfast Area



Max Dimensions: 13'10" x 10'3"  
Calculated Area: 118 sq. ft  
Included: Yes

Heated: Yes  
Finished: Yes  
Enclosed: Yes  
Contiguous: Yes  
Permitted: Yes  
Wet space: No  
Addition: No  
Conversion: No

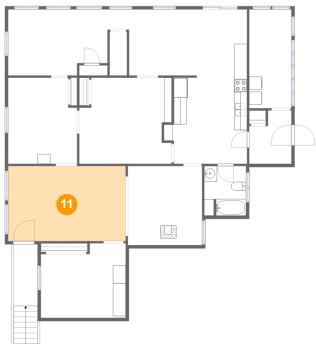
10 Floor 2 - Porch



Max Dimensions: 3'9" x 9'7"  
Calculated Area: 58 sq. ft  
Included: No

Heated: No  
Finished: Yes  
Enclosed: No  
Contiguous: Yes  
Permitted: Yes  
Wet space: No  
Addition: No  
Conversion: No

11 Floor 2 - Living Room



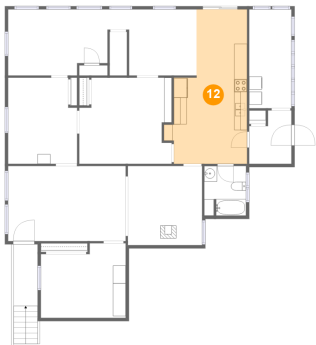
Max Dimensions: 18'3" x 11'8"  
Calculated Area: 213 sq. ft  
Included: Yes

Heated: Yes  
Finished: Yes  
Enclosed: Yes  
Contiguous: Yes  
Permitted: Yes  
Wet space: No  
Addition: No  
Conversion: No



12931 Catawba Road, Troutville, Botetourt County, Virginia,  
United States, 24175

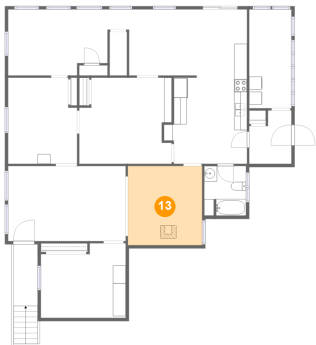
12 Floor 2 - Kitchen



Max Dimensions: 12'11" x 24'0"  
Calculated Area: 239 sq. ft  
Included: Yes

Heated: Yes  
Finished: Yes  
Enclosed: Yes  
Contiguous: Yes  
Permitted: Yes  
Wet space: No  
Addition: No  
Conversion: No

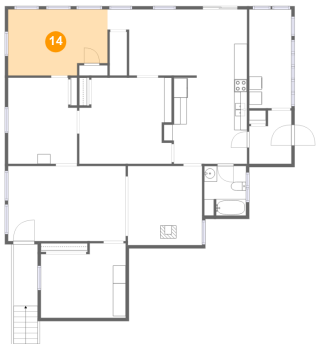
13 Floor 2 - Family Room



Max Dimensions: 11'7" x 12'3"  
Calculated Area: 142 sq. ft  
Included: Yes

Heated: Yes  
Finished: Yes  
Enclosed: Yes  
Contiguous: Yes  
Permitted: Yes  
Wet space: No  
Addition: No  
Conversion: No

14 Floor 2 - Dining Area



Max Dimensions: 15'5" x 10'3"  
Calculated Area: 150 sq. ft  
Included: Yes

Heated: Yes  
Finished: Yes  
Enclosed: Yes  
Contiguous: Yes  
Permitted: Yes  
Wet space: No  
Addition: No  
Conversion: No