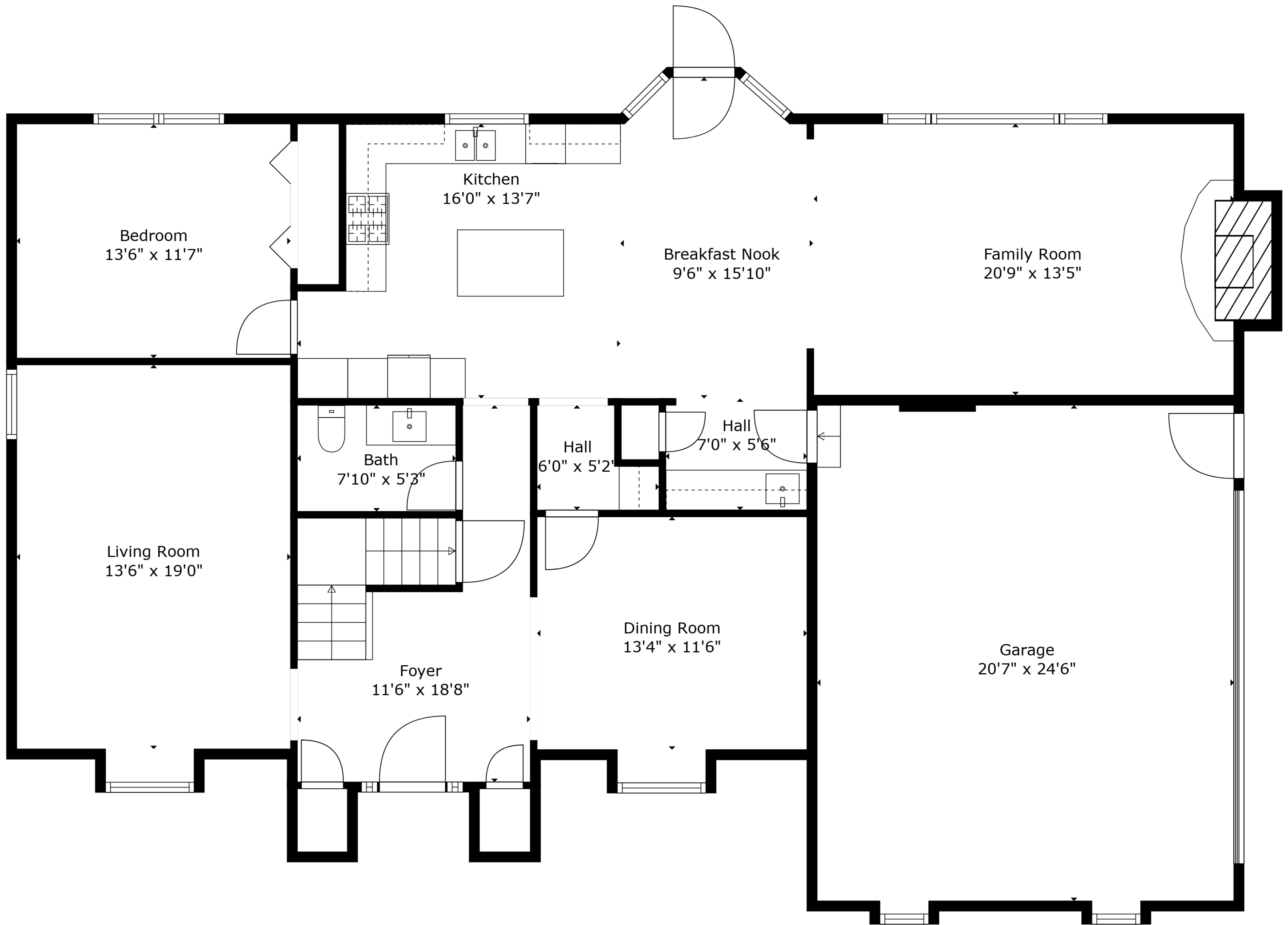


Basement  
59'6" x 35'11"

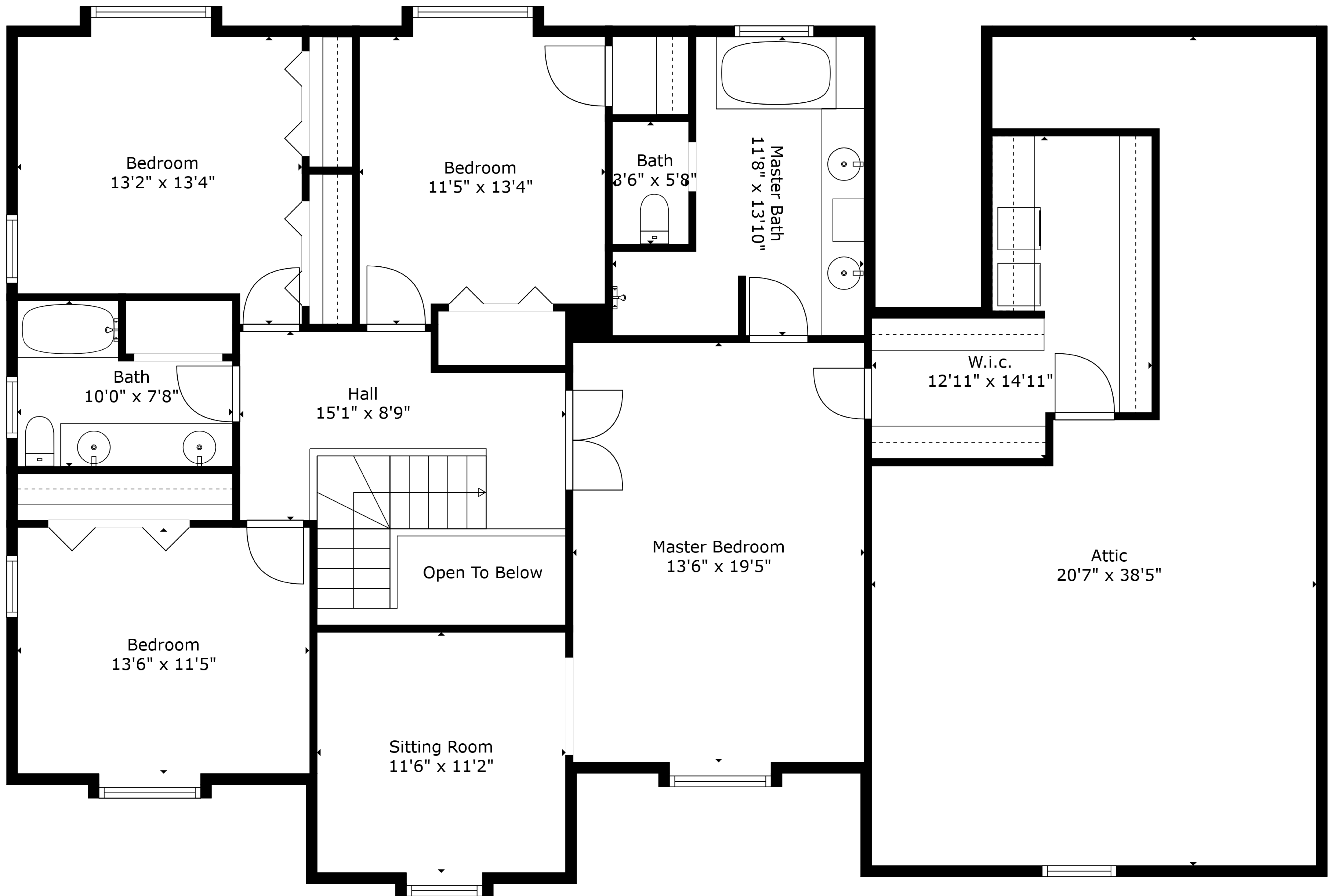
**TOTAL: 3051 sq. ft**

BELOW GROUND: 0 sq. ft, FLOOR 2: 1544 sq. ft, FLOOR 3: 1507 sq. ft  
EXCLUDED AREAS: BASEMENT: 1528 sq. ft, GARAGE: 505 sq. ft, BAY WINDOW: 45 sq. ft,  
FIREPLACE: 13 sq. ft, LOW CEILING: 255 sq. ft, ATTIC: 315 sq. ft,  
OPEN TO BELOW: 35 sq. ft



**TOTAL: 3051 sq. ft**

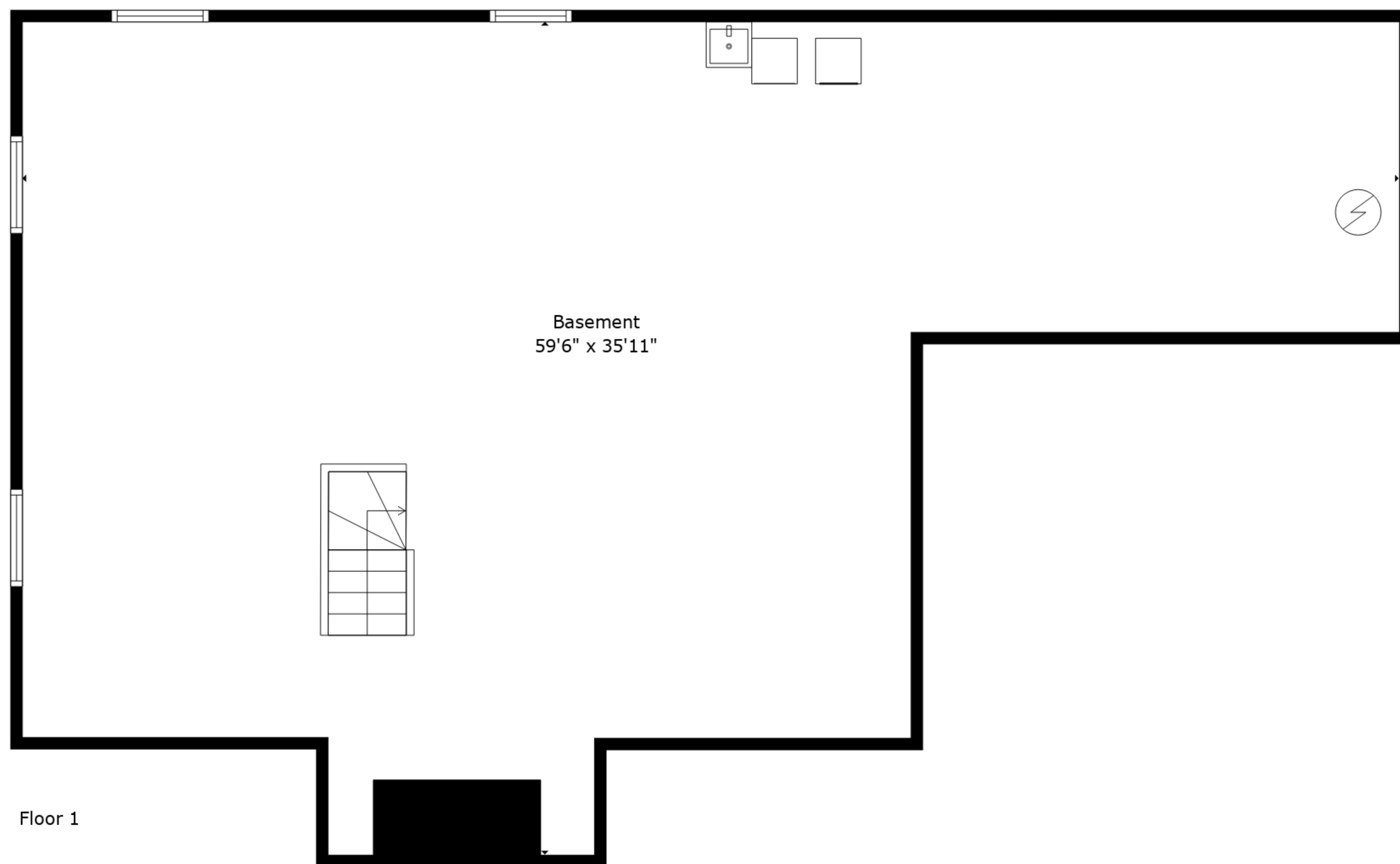
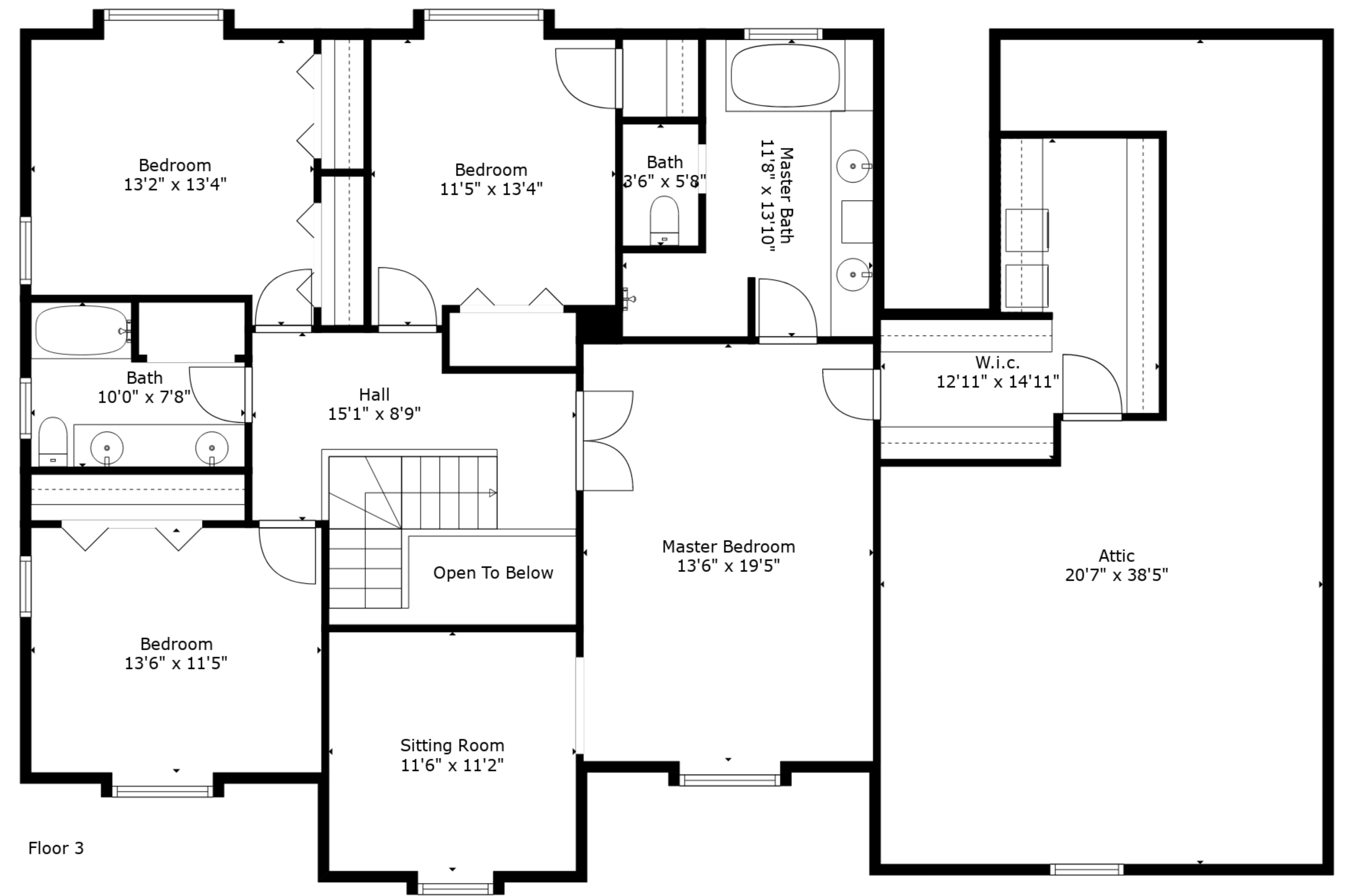
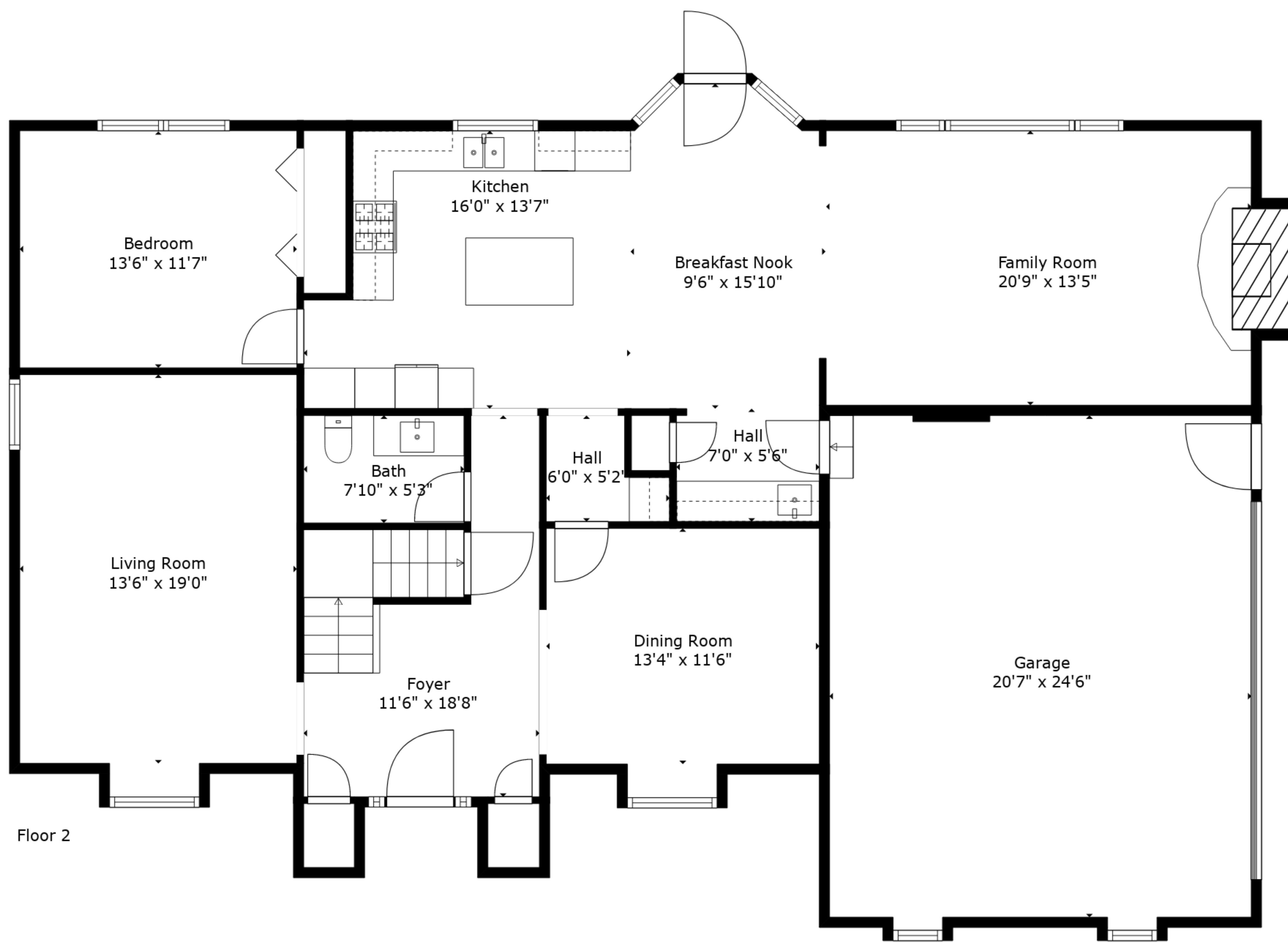
BELOW GROUND: 0 sq. ft, FLOOR 2: 1544 sq. ft, FLOOR 3: 1507 sq. ft  
 EXCLUDED AREAS: BASEMENT: 1528 sq. ft, GARAGE: 505 sq. ft, BAY WINDOW: 45 sq. ft,  
 FIREPLACE: 13 sq. ft, LOW CEILING: 255 sq. ft, ATTIC: 315 sq. ft,  
 OPEN TO BELOW: 35 sq. ft



**TOTAL: 3051 sq. ft**

BELOW GROUND: 0 sq. ft, FLOOR 2: 1544 sq. ft, FLOOR 3: 1507 sq. ft  
 EXCLUDED AREAS: BASEMENT: 1528 sq. ft, GARAGE: 505 sq. ft, BAY WINDOW: 45 sq. ft,  
 FIREPLACE: 13 sq. ft, LOW CEILING: 255 sq. ft, ATTIC: 315 sq. ft,  
 OPEN TO BELOW: 35 sq. ft





**TOTAL: 3051 sq. ft**  
 BELOW GROUND: 0 sq. ft, FLOOR 2: 1544 sq. ft, FLOOR 3: 1507 sq. ft  
 EXCLUDED AREAS: BASEMENT: 1528 sq. ft, GARAGE: 505 sq. ft, BAY WINDOW: 45 sq. ft,  
 FIREPLACE: 13 sq. ft, LOW CEILING: 255 sq. ft, ATTIC: 315 sq. ft,  
 OPEN TO BELOW: 35 sq. ft