





# 2010 Mariah Way, Pocatello, Bannock County, Idaho, United States, 83201

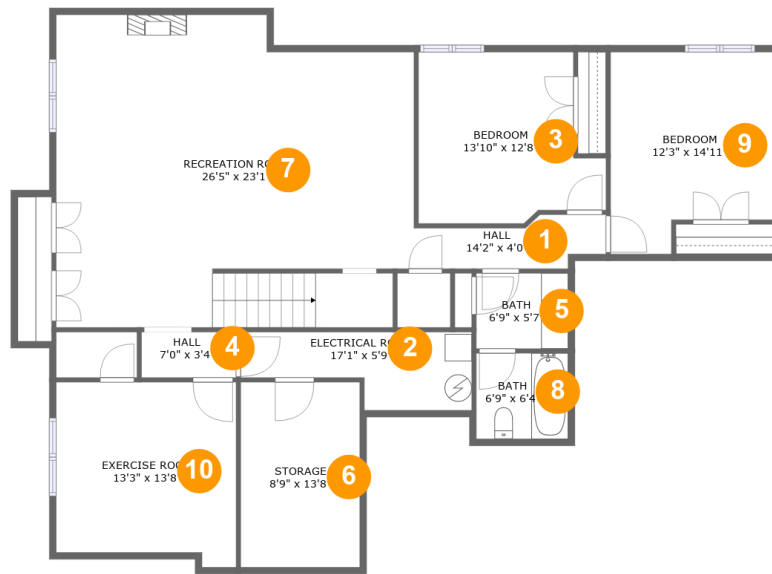


## Property Summary

 **2** garages     **5** bedrooms     **3** bathrooms     **0** half baths

 **2** floors     **3,250** Gross Living Area sqft     **4,883** total sqft

**2010 Mariah Way, Pocatello, Bannock County, Idaho, United States, 83201**



**Room Dimensions**

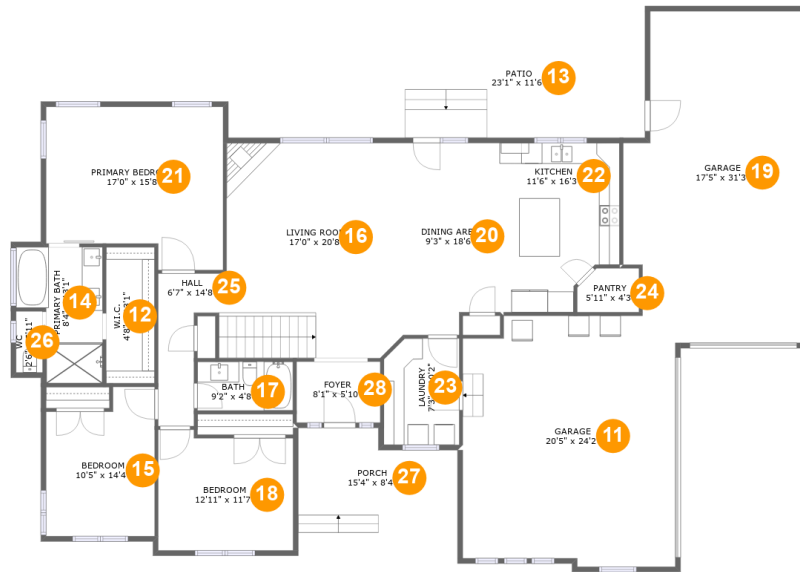
Floor 1

Total sqft: 1662

Living area: 1430

#	Room name	Dimensions	Area (sqft)	Counted as Living Area
1	Hall	14'2" x 4'0"	45 sq. ft	Yes
2	Electrical Room	17'1" x 5'9"	77 sq. ft	No
3	Bedroom	13'10" x 12'8"	151 sq. ft	Yes
4	Hall	7'0" x 3'4"	23 sq. ft	Yes
5	Bath	6'9" x 5'7"	38 sq. ft	Yes
6	Storage	8'9" x 13'8"	120 sq. ft	No
7	Recreation Room	26'5" x 23'1"	568 sq. ft	Yes
8	Bath	6'9" x 6'4"	43 sq. ft	Yes
9	Bedroom	12'3" x 14'11"	163 sq. ft	Yes
10	Exercise Room	13'3" x 13'8"	170 sq. ft	Yes

# 2010 Mariah Way, Pocatello, Bannock County, Idaho, United States, 83201



## Room Dimensions

Floor 2

Total sqft: 3221

Living area: 1820

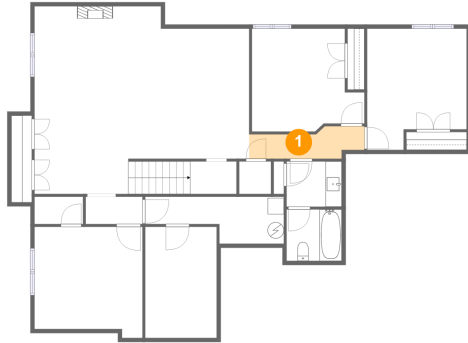
#	Room name	Dimensions	Area (sqft)	Counted as Living Area
11	Garage	20'5" x 24'2"	472 sq. ft	No
12	W.i.c.	4'8" x 13'1"	61 sq. ft	Yes
13	Patio	23'1" x 11'6"	266 sq. ft	No
14	Primary Bath	8'4" x 13'1"	88 sq. ft	Yes
15	Bedroom	10'5" x 14'4"	135 sq. ft	Yes
16	Living Room	17'0" x 20'8"	352 sq. ft	Yes
17	Bath	9'2" x 4'8"	43 sq. ft	Yes
18	Bedroom	12'11" x 11'7"	143 sq. ft	Yes
19	Garage	17'5" x 31'3"	494 sq. ft	No
20	Dining Area	9'3" x 18'6"	163 sq. ft	Yes
21	Primary Bedroom	17'0" x 15'8"	240 sq. ft	Yes

**2010 Mariah Way, Pocatello, Bannock County,  
Idaho, United States, 83201**

#	Room name	Dimensions	Area (sqft)	Counted as Living Area
22	Kitchen	11'6" x 16'3"	170 sq. ft	Yes
23	Laundry	7'3" x 10'2"	72 sq. ft	Yes
24	Pantry	5'11" x 4'3"	23 sq. ft	Yes
25	Hall	6'7" x 14'8"	62 sq. ft	Yes
26	Wc	2'6" x 5'11"	15 sq. ft	Yes
27	Porch	15'4" x 8'4"	112 sq. ft	No
28	Foyer	8'1" x 5'10"	47 sq. ft	Yes

# 2010 Mariah Way, Pocatello, Bannock County, Idaho, United States, 83201

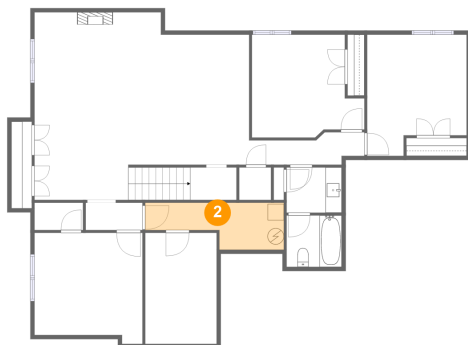
## 1 Floor 1 - Hall



Dimensions: 14'2" x 4'0"  
Area: 45 sq. ft  
Counted as Living Area:  
Yes

Heated: Yes  
Finished: Yes  
Enclosed: Yes  
Contiguous:  
Yes  
Permitted: Yes  
Wet Space: No  
Addition: No  
Conversion: No

## 2 Floor 1 - Electrical Room

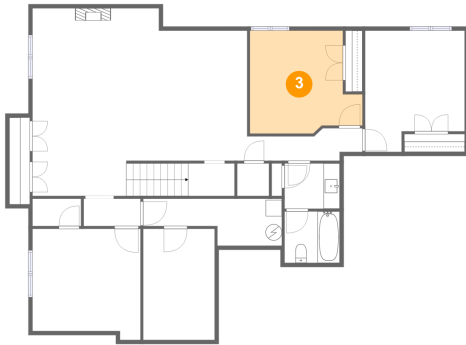


Dimensions: 17'1" x 5'9"  
Area: 77 sq. ft  
Counted as Living Area: No

Heated: No  
Finished: No  
Enclosed: Yes  
Contiguous: Yes  
Permitted: Yes  
Wet Space: No  
Addition: No  
Conversion: No

# 2010 Mariah Way, Pocatello, Bannock County, Idaho, United States, 83201

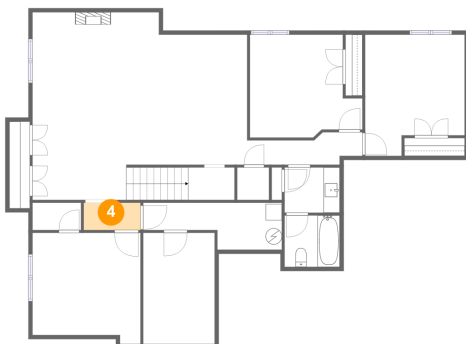
## 3 Floor 1 - Bedroom



Dimensions: 13'10" x 12'8"  
Area: 151 sq. ft  
Counted as Living Area:  
Yes

Heated: Yes  
Finished: Yes  
Enclosed: Yes  
Contiguous:  
Yes  
Permitted: Yes  
Wet Space: No  
Addition: No  
Conversion: No

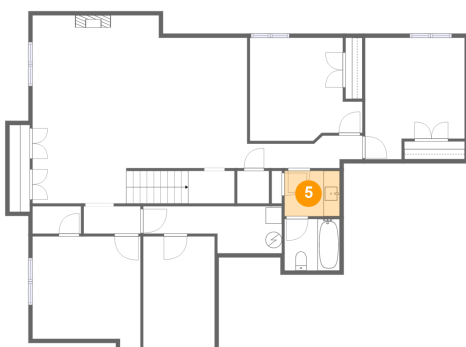
## 4 Floor 1 - Hall



Dimensions: 7'0" x 3'4"  
Area: 23 sq. ft  
Counted as Living Area:  
Yes

Heated: Yes  
Finished: Yes  
Enclosed: Yes  
Contiguous:  
Yes  
Permitted: Yes  
Wet Space: No  
Addition: No  
Conversion: No

## 5 Floor 1 - Bath

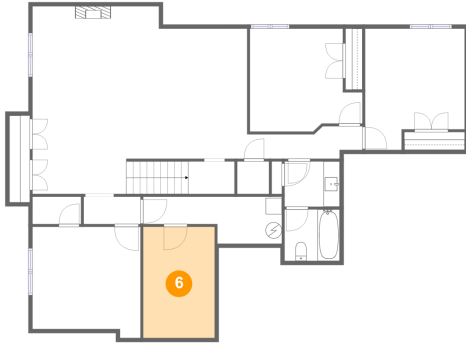


Dimensions: 6'9" x 5'7"  
Area: 38 sq. ft  
Counted as Living Area:  
Yes

Heated: Yes  
Finished: Yes  
Enclosed: Yes  
Contiguous:  
Yes  
Permitted: Yes  
Wet Space: Yes  
Addition: No  
Conversion: No

# 2010 Mariah Way, Pocatello, Bannock County, Idaho, United States, 83201

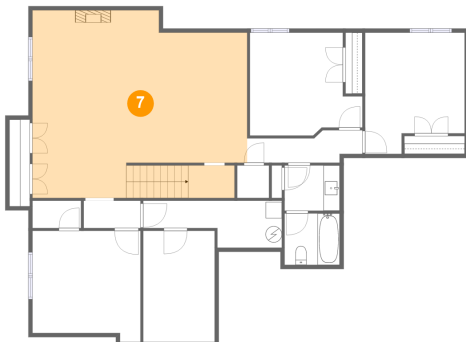
## 6 Floor 1 - Storage



Dimensions: 8'9" x 13'8"  
Area: 120 sq. ft  
Counted as Living Area: No

Heated: No  
Finished: No  
Enclosed: No  
Contiguous: Yes  
Permitted: Yes  
Wet Space: No  
Addition: No  
Conversion: No

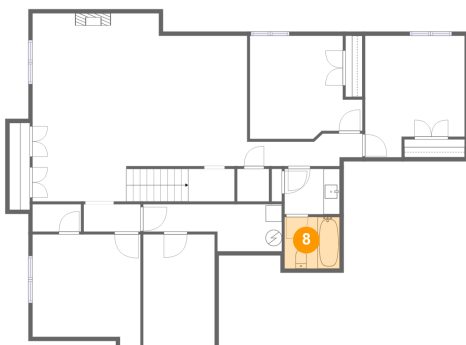
## 7 Floor 1 - Recreation Room



Dimensions: 26'5" x 23'1"  
Area: 568 sq. ft  
Counted as Living Area: Yes

Heated: Yes  
Finished: Yes  
Enclosed: Yes  
Contiguous: Yes  
Permitted: Yes  
Wet Space: No  
Addition: No  
Conversion: No

## 8 Floor 1 - Bath



Dimensions: 6'9" x 6'4"  
Area: 43 sq. ft  
Counted as Living Area: Yes

Heated: Yes  
Finished: Yes  
Enclosed: Yes  
Contiguous: Yes  
Permitted: Yes  
Wet Space: Yes  
Addition: No  
Conversion: No

# 2010 Mariah Way, Pocatello, Bannock County, Idaho, United States, 83201

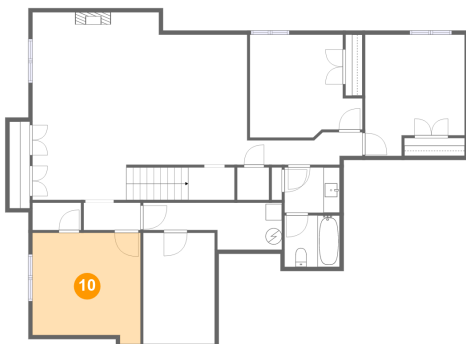
## 9 Floor 1 - Bedroom



Dimensions: 12'3" x 14'11"  
Area: 163 sq. ft  
Counted as Living Area:  
Yes

Heated: Yes  
Finished: Yes  
Enclosed: Yes  
Contiguous:  
Yes  
Permitted: Yes  
Wet Space: No  
Addition: No  
Conversion: No

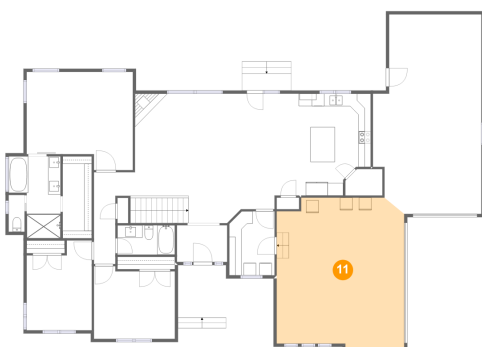
## 10 Floor 1 - Exercise Room



Dimensions: 13'3" x 13'8"  
Area: 170 sq. ft  
Counted as Living Area:  
Yes

Heated: Yes  
Finished: Yes  
Enclosed: Yes  
Contiguous:  
Yes  
Permitted: Yes  
Wet Space: No  
Addition: No  
Conversion: No

## 11 Floor 2 - Garage



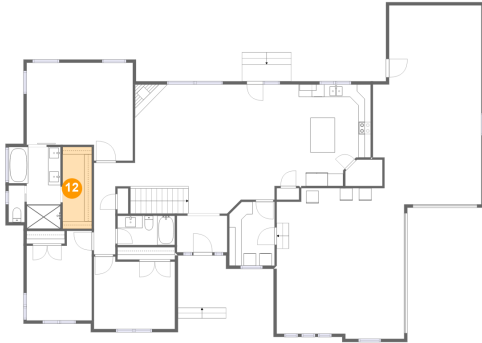
Dimensions: 20'5" x 24'2"  
Area: 472 sq. ft  
Counted as Living Area: No

Heated: No  
Finished: No  
Enclosed: Yes  
Contiguous: Yes  
Permitted: Yes  
Wet Space: No  
Addition: No  
Conversion: No



# 2010 Mariah Way, Pocatello, Bannock County, Idaho, United States, 83201

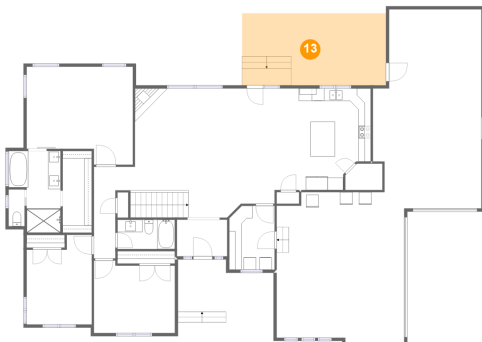
## 12 Floor 2 - W.i.c.



Dimensions: 4'8" x 13'1"  
Area: 61 sq. ft  
Counted as Living Area:  
Yes

Heated: Yes  
Finished: Yes  
Enclosed: Yes  
Contiguous:  
Yes  
Permitted: Yes  
Wet Space: No  
Addition: No  
Conversion: No

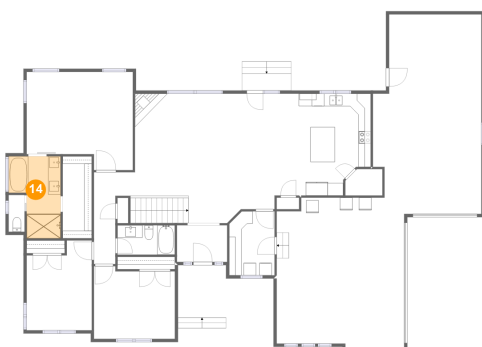
## 13 Floor 2 - Patio



Dimensions: 23'1" x 11'6"  
Area: 266 sq. ft  
Counted as Living Area: No

Heated: No  
Finished: Yes  
Enclosed: No  
Contiguous: Yes  
Permitted: Yes  
Wet Space: No  
Addition: No  
Conversion: No

## 14 Floor 2 - Primary Bath



Dimensions: 8'4" x 13'1"  
Area: 88 sq. ft  
Counted as Living Area:  
Yes

Heated: Yes  
Finished: Yes  
Enclosed: Yes  
Contiguous:  
Yes  
Permitted: Yes  
Wet Space: Yes  
Addition: No  
Conversion: No

# 2010 Mariah Way, Pocatello, Bannock County, Idaho, United States, 83201

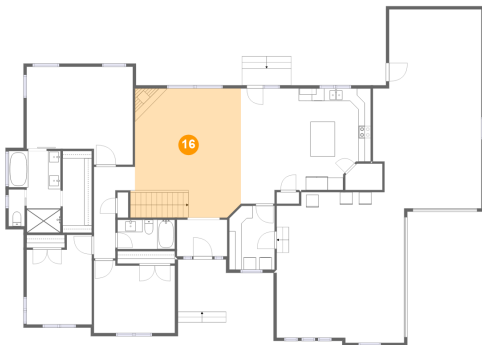
## 15 Floor 2 - Bedroom



Dimensions: 10'5" x 14'4"  
Area: 135 sq. ft  
Counted as Living Area:  
Yes

Heated: Yes  
Finished: Yes  
Enclosed: Yes  
Contiguous:  
Yes  
Permitted: Yes  
Wet Space: No  
Addition: No  
Conversion: No

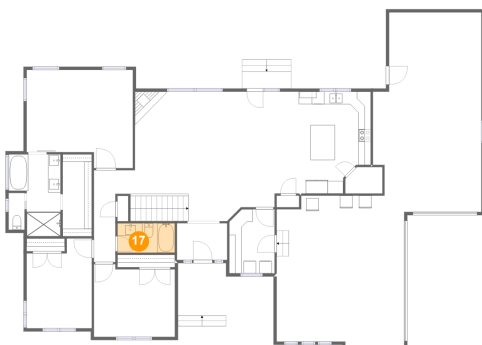
## 16 Floor 2 - Living Room



Dimensions: 17'0" x 20'8"  
Area: 352 sq. ft  
Counted as Living Area:  
Yes

Heated: Yes  
Finished: Yes  
Enclosed: Yes  
Contiguous:  
Yes  
Permitted: Yes  
Wet Space: No  
Addition: No  
Conversion: No

## 17 Floor 2 - Bath

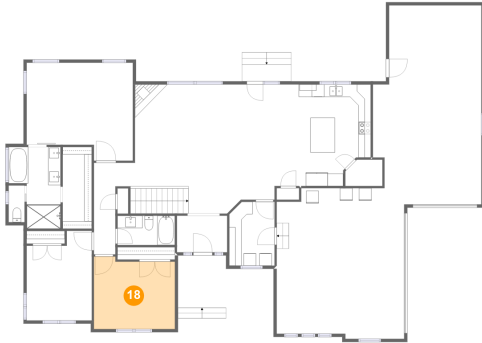


Dimensions: 9'2" x 4'8"  
Area: 43 sq. ft  
Counted as Living Area:  
Yes

Heated: Yes  
Finished: Yes  
Enclosed: Yes  
Contiguous:  
Yes  
Permitted: Yes  
Wet Space: Yes  
Addition: No  
Conversion: No

# 2010 Mariah Way, Pocatello, Bannock County, Idaho, United States, 83201

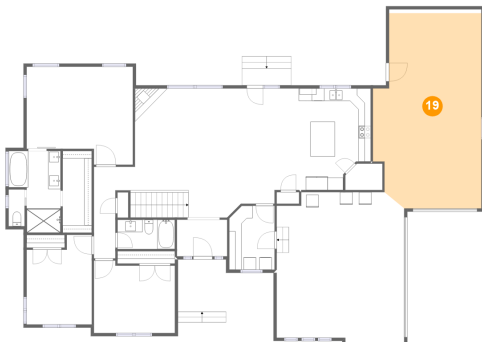
## 18 Floor 2 - Bedroom



Dimensions: 12'11" x 11'7"  
Area: 143 sq. ft  
Counted as Living Area:  
Yes

Heated: Yes  
Finished: Yes  
Enclosed: Yes  
Contiguous:  
Yes  
Permitted: Yes  
Wet Space: No  
Addition: No  
Conversion: No

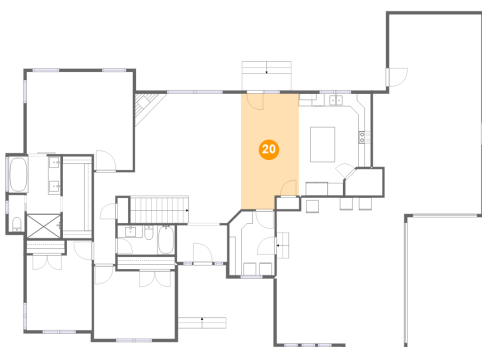
## 19 Floor 2 - Garage



Dimensions: 17'5" x 31'3"  
Area: 494 sq. ft  
Counted as Living Area: No

Heated: No  
Finished: No  
Enclosed: Yes  
Contiguous: Yes  
Permitted: Yes  
Wet Space: No  
Addition: No  
Conversion: No

## 20 Floor 2 - Dining Area

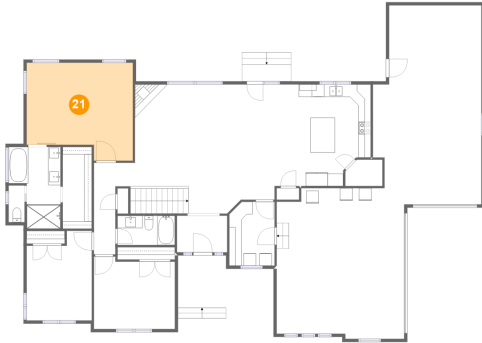


Dimensions: 9'3" x 18'6"  
Area: 163 sq. ft  
Counted as Living Area:  
Yes

Heated: Yes  
Finished: Yes  
Enclosed: Yes  
Contiguous:  
Yes  
Permitted: Yes  
Wet Space: No  
Addition: No  
Conversion: No

# 2010 Mariah Way, Pocatello, Bannock County, Idaho, United States, 83201

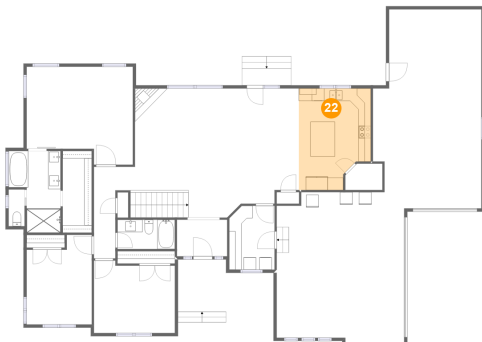
## 21 Floor 2 - Primary Bedroom



Dimensions: 17'0" x 15'8"  
Area: 240 sq. ft  
Counted as Living Area:  
Yes

Heated: Yes  
Finished: Yes  
Enclosed: Yes  
Contiguous:  
Yes  
Permitted: Yes  
Wet Space: No  
Addition: No  
Conversion: No

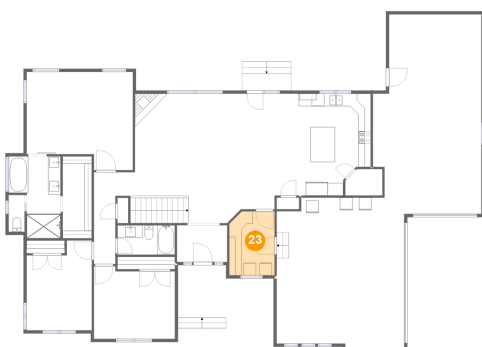
## 22 Floor 2 - Kitchen



Dimensions: 11'6" x 16'3"  
Area: 170 sq. ft  
Counted as Living Area:  
Yes

Heated: Yes  
Finished: Yes  
Enclosed: Yes  
Contiguous:  
Yes  
Permitted: Yes  
Wet Space: No  
Addition: No  
Conversion: No

## 23 Floor 2 - Laundry



Dimensions: 7'3" x 10'2"  
Area: 72 sq. ft  
Counted as Living Area:  
Yes

Heated: Yes  
Finished: Yes  
Enclosed: Yes  
Contiguous:  
Yes  
Permitted: Yes  
Wet Space: No  
Addition: No  
Conversion: No

# 2010 Mariah Way, Pocatello, Bannock County, Idaho, United States, 83201

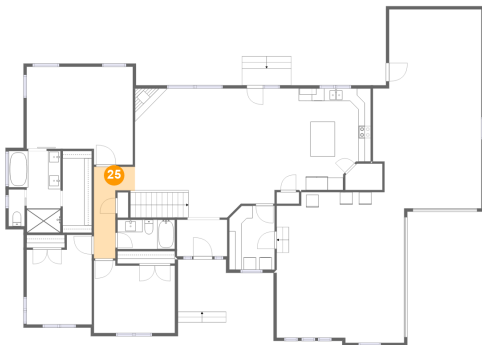
## 24 Floor 2 - Pantry



Dimensions: 5'11" x 4'3"  
Area: 23 sq. ft  
Counted as Living Area:  
Yes

Heated: Yes  
Finished: Yes  
Enclosed: Yes  
Contiguous:  
Yes  
Permitted: Yes  
Wet Space: No  
Addition: No  
Conversion: No

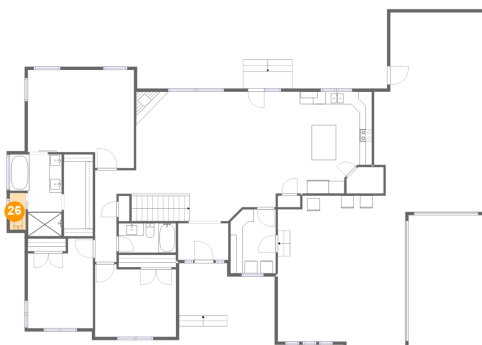
## 25 Floor 2 - Hall



Dimensions: 6'7" x 14'8"  
Area: 62 sq. ft  
Counted as Living Area:  
Yes

Heated: Yes  
Finished: Yes  
Enclosed: Yes  
Contiguous:  
Yes  
Permitted: Yes  
Wet Space: No  
Addition: No  
Conversion: No

## 26 Floor 2 - Wc



Dimensions: 2'6" x 5'11"  
Area: 15 sq. ft  
Counted as Living Area:  
Yes

Heated: Yes  
Finished: Yes  
Enclosed: Yes  
Contiguous:  
Yes  
Permitted: Yes  
Wet Space: Yes  
Addition: No  
Conversion: No

# 2010 Mariah Way, Pocatello, Bannock County, Idaho, United States, 83201

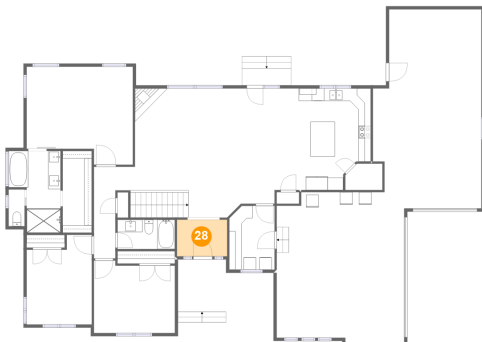
## 27 Floor 2 - Porch



**Dimensions:** 15'4" x 8'4"  
**Area:** 112 sq. ft  
**Counted as Living Area:** No

**Heated:** No  
**Finished:** Yes  
**Enclosed:** No  
**Contiguous:** Yes  
**Permitted:** Yes  
**Wet Space:** No  
**Addition:** No  
**Conversion:** No

## 28 Floor 2 - Foyer



**Dimensions:** 8'1" x 5'10"  
**Area:** 47 sq. ft  
**Counted as Living Area:** Yes

**Heated:** Yes  
**Finished:** Yes  
**Enclosed:** Yes  
**Contiguous:** Yes  
**Permitted:** Yes  
**Wet Space:** No  
**Addition:** No  
**Conversion:** No