

Home Data Report

1702 Coulter Road, Kiskiminetas Township, Apollo, Armstrong County, Pennsylvania, United

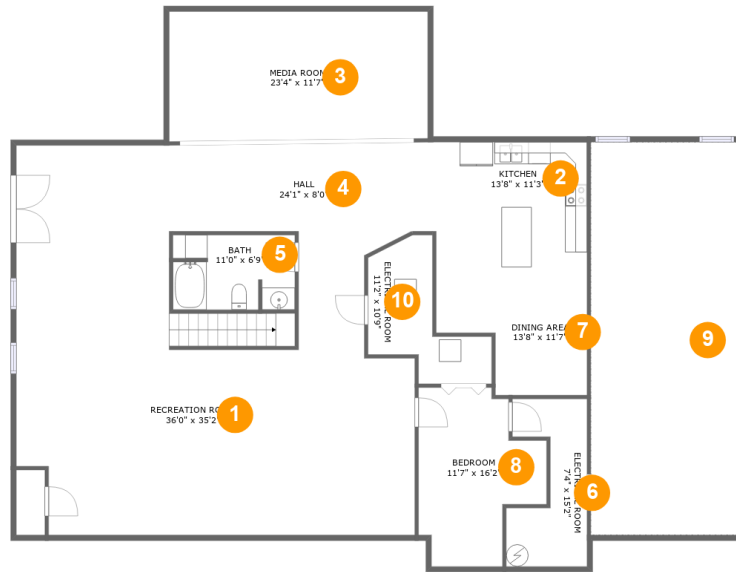


Property Summary

1 garages **5** bedrooms **5** bathrooms **0** half baths

3 floors **6,412** Gross Living Area sqft **10,642** total sqft

**1702 Coulter Road, Kiskiminetas Township,
Apollo, Armstrong County, Pennsylvania, United**



Room Dimensions

Floor 1

Total sqft: 2745

Living area: 1330

#	Room name	Dimensions	Area (sqft)	Counted as Living Area
1	Recreation Room	36'0" x 35'2"	942 sq. ft	Yes
2	Kitchen	13'8" x 11'3"	154 sq. ft	Yes
3	Media Room	23'4" x 11'7"	271 sq. ft	No
4	Hall	24'1" x 8'0"	191 sq. ft	No
5	Bath	11'0" x 6'9"	72 sq. ft	No
6	Electrical Room	7'4" x 15'2"	83 sq. ft	No
7	Dining Area	13'8" x 11'7"	128 sq. ft	Yes
8	Bedroom	11'7" x 16'2"	143 sq. ft	No
9	Crawl Space	13'5" x 35'6"	477 sq. ft	No
10	Electrical Room	11'2" x 10'9"	85 sq. ft	No

**1702 Coulter Road, Kiskiminetas Township,
Apollo, Armstrong County, Pennsylvania, United**



Room Dimensions

Floor 2

Total sqft: 5054

Living area: 2798

#	Room name	Dimensions	Area (sqft)	Counted as Living Area
11	Porch	23'1" x 11'8"	271 sq. ft	No
12	Hall	5'3" x 6'0"	32 sq. ft	No
13	Living Room	14'5" x 21'6"	319 sq. ft	Yes
14	Dining Area	14'1" x 16'6"	232 sq. ft	Yes
15	Office	14'5" x 16'0"	231 sq. ft	Yes
16	Breakfast Nook	12'3" x 15'2"	185 sq. ft	Yes
17	Patio	13'11" x 23'4"	325 sq. ft	No
18	Pantry	6'6" x 6'0"	39 sq. ft	Yes
19	Screened Porch	23'4" x 11'5"	252 sq. ft	No
20	Garage	21'9" x 42'5"	924 sq. ft	No
21	Patio	14'6" x 23'8"	345 sq. ft	No

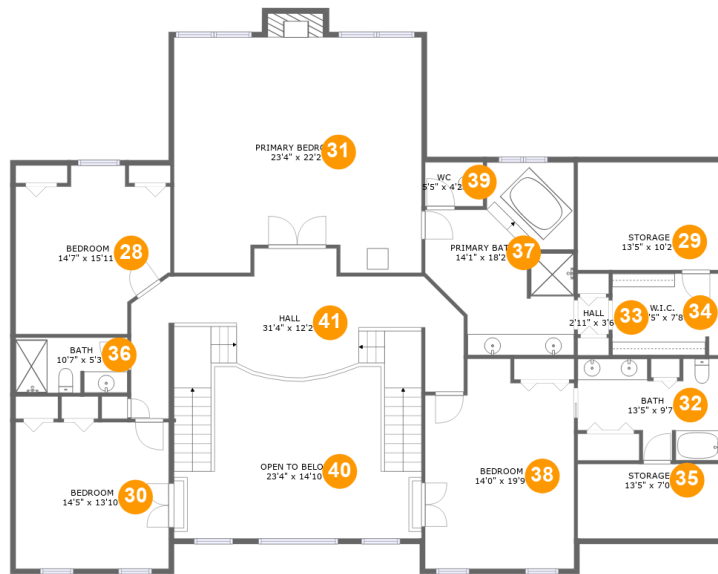
Home Data Report

**1702 Coulter Road, Kiskiminetas Township,
Apollo, Armstrong County, Pennsylvania, United**



#	Room name	Dimensions	Area (sqft)	Counted as Living Area
22	Foyer	23'4" x 16'9"	374 sq. ft	Yes
23	Living Room	23'3" x 32'5"	648 sq. ft	Yes
24	Laundry	6'6" x 11'6"	75 sq. ft	Yes
25	Kitchen	15'7" x 15'2"	235 sq. ft	Yes
26	Bath	14'7" x 6'0"	80 sq. ft	Yes
27	Hall	6'7" x 20'0"	98 sq. ft	Yes

**1702 Coulter Road, Kiskiminetas Township,
Apollo, Armstrong County, Pennsylvania, United**



Room Dimensions

Floor 3

Total sqft: 2843

Living area: 2284

#	Room name	Dimensions	Area (sqft)	Counted as Living Area
28	Bedroom	14'7" x 15'11"	195 sq. ft	Yes
29	Storage	13'5" x 10'2"	76 sq. ft	No
30	Bedroom	14'5" x 13'10"	199 sq. ft	Yes
31	Primary Bedroom	23'4" x 22'2"	508 sq. ft	Yes
32	Bath	13'5" x 9'7"	103 sq. ft	Yes
33	Hall	2'11" x 3'6"	10 sq. ft	Yes
34	W.i.c.	13'5" x 7'8"	83 sq. ft	Yes
35	Storage	13'5" x 7'0"	51 sq. ft	No
36	Bath	10'7" x 5'3"	54 sq. ft	Yes
37	Primary Bath	14'1" x 18'2"	204 sq. ft	Yes
38	Bedroom	14'0" x 19'9"	251 sq. ft	Yes

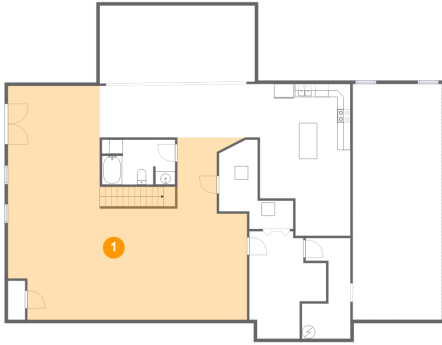
Home Data Report

**1702 Coulter Road, Kiskiminetas Township,
Apollo, Armstrong County, Pennsylvania, United**



#	Room name	Dimensions	Area (sqft)	Counted as Living Area
39	Wc	5'5" x 4'2"	23 sq. ft	Yes
40	Open To Below	23'4" x 14'10"	280 sq. ft	No
41	Hall	31'4" x 12'2"	385 sq. ft	Yes

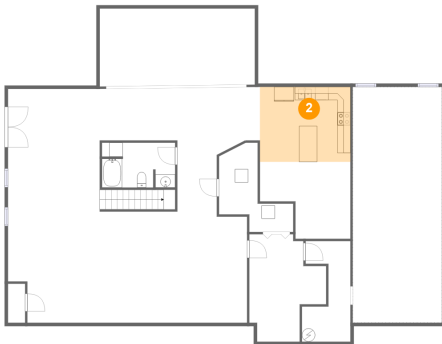
1 Floor 1 - Recreation Room



Dimensions: 36'0" x 35'2"
Area: 942 sq. ft
Counted as Living Area:
Yes

Heated: Yes
Finished: Yes
Enclosed: Yes
Contiguous:
Yes
Permitted: Yes
Wet Space: No
Addition: No
Conversion: No

2 Floor 1 - Kitchen



Dimensions: 13'8" x 11'3"
Area: 154 sq. ft
Counted as Living Area:
Yes

Heated: Yes
Finished: Yes
Enclosed: Yes
Contiguous:
Yes
Permitted: Yes
Wet Space: No
Addition: No
Conversion: No

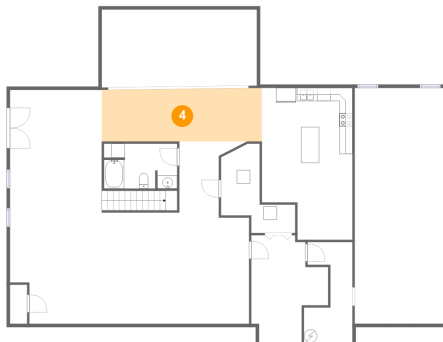
3 Floor 1 - Media Room



Dimensions: 23'4" x 11'7"
Area: 271 sq. ft
Counted as Living Area: No

Heated: Yes
Finished: Yes
Enclosed: Yes
Contiguous: Yes
Permitted: Yes
Wet Space: No
Addition: No
Conversion: No

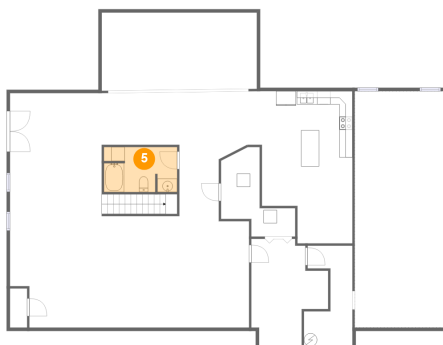
4 Floor 1 - Hall



Dimensions: 24'1" x 8'0"
Area: 191 sq. ft
Counted as Living Area: No

Heated: Yes
Finished: Yes
Enclosed: Yes
Contiguous: Yes
Permitted: Yes
Wet Space: No
Addition: No
Conversion: No

5 Floor 1 - Bath



Dimensions: 11'0" x 6'9"
Area: 72 sq. ft
Counted as Living Area: No

Heated: Yes
Finished: Yes
Enclosed: Yes
Contiguous: Yes
Permitted: Yes
Wet Space: Yes
Addition: No
Conversion: No

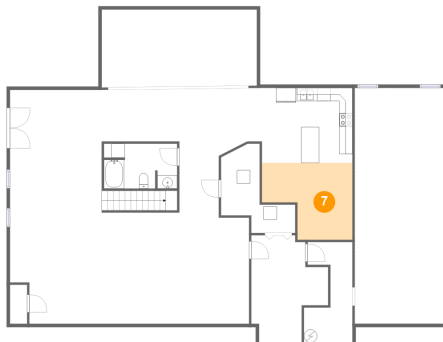
6 Floor 1 - Electrical Room



Dimensions: 7'4" x 15'2"
Area: 83 sq. ft
Counted as Living Area: No

Heated: No
Finished: No
Enclosed: Yes
Contiguous: Yes
Permitted: Yes
Wet Space: No
Addition: No
Conversion: No

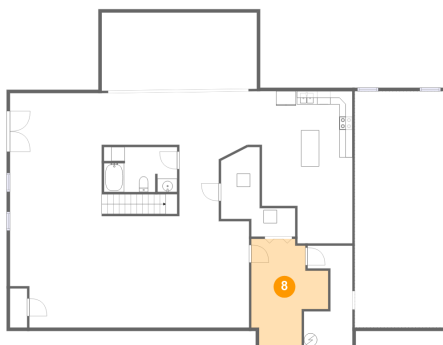
7 Floor 1 - Dining Area



Dimensions: 13'8" x 11'7"
Area: 128 sq. ft
Counted as Living Area: Yes

Heated: Yes
Finished: Yes
Enclosed: Yes
Contiguous: Yes
Permitted: Yes
Wet Space: No
Addition: No
Conversion: No

8 Floor 1 - Bedroom



Dimensions: 11'7" x 16'2"
Area: 143 sq. ft
Counted as Living Area: No

Heated: Yes
Finished: Yes
Enclosed: Yes
Contiguous: Yes
Permitted: Yes
Wet Space: No
Addition: No
Conversion: No

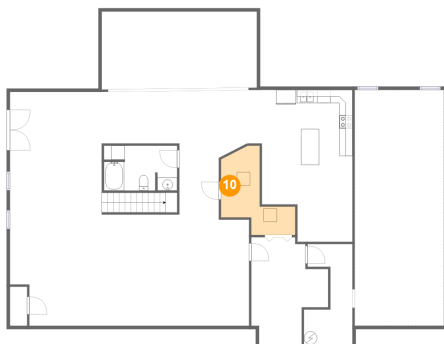
9 Floor 1 - Crawl Space



Dimensions: 13'5" x 35'6"
Area: 477 sq. ft
Counted as Living Area: No

Heated: No
Finished: No
Enclosed: No
Contiguous: Yes
Permitted: No
Wet Space: No
Addition: No
Conversion: No

10 Floor 1 - Electrical Room



Dimensions: 11'2" x 10'9"
Area: 85 sq. ft
Counted as Living Area: No

Heated: No
Finished: No
Enclosed: Yes
Contiguous: Yes
Permitted: Yes
Wet Space: No
Addition: No
Conversion: No

11 Floor 2 - Porch



Dimensions: 23'1" x 11'8"
Area: 271 sq. ft
Counted as Living Area: No

Heated: No
Finished: Yes
Enclosed: No
Contiguous: Yes
Permitted: Yes
Wet Space: No
Addition: No
Conversion: No

12 Floor 2 - Hall



Dimensions: 5'3" x 6'0"
Area: 32 sq. ft
Counted as Living Area: No

Heated: Yes
Finished: Yes
Enclosed: Yes
Contiguous: Yes
Permitted: Yes
Wet Space: No
Addition: No
Conversion: No

13 Floor 2 - Living Room



Dimensions: 14'5" x 21'6"
Area: 319 sq. ft
Counted as Living Area:
Yes

Heated: Yes
Finished: Yes
Enclosed: Yes
Contiguous:
Yes
Permitted: Yes
Wet Space: No
Addition: No
Conversion: No

14 Floor 2 - Dining Area



Dimensions: 14'1" x 16'6"
Area: 232 sq. ft
Counted as Living Area:
Yes

Heated: Yes
Finished: Yes
Enclosed: Yes
Contiguous:
Yes
Permitted: Yes
Wet Space: No
Addition: No
Conversion: No

15 Floor 2 - Office



Dimensions: 14'5" x 16'0"
Area: 231 sq. ft
Counted as Living Area:
Yes

Heated: Yes
Finished: Yes
Enclosed: Yes
Contiguous:
Yes
Permitted: Yes
Wet Space: No
Addition: No
Conversion: No

16 Floor 2 - Breakfast Nook



Dimensions: 12'3" x 15'2"
Area: 185 sq. ft
Counted as Living Area:
Yes

Heated: Yes
Finished: Yes
Enclosed: Yes
Contiguous:
Yes
Permitted: Yes
Wet Space: No
Addition: No
Conversion: No

17 Floor 2 - Patio



Dimensions: 13'11" x 23'4"
Area: 325 sq. ft
Counted as Living Area: No

Heated: No
Finished: Yes
Enclosed: No
Contiguous: Yes
Permitted: Yes
Wet Space: No
Addition: No
Conversion: No

18 Floor 2 - Pantry



Dimensions: 6'6" x 6'0"
Area: 39 sq. ft
Counted as Living Area:
Yes

Heated: Yes
Finished: Yes
Enclosed: Yes
Contiguous:
Yes
Permitted: Yes
Wet Space: No
Addition: No
Conversion: No

19 Floor 2 - Screened Porch



Dimensions: 23'4" x 11'5"
Area: 252 sq. ft
Counted as Living Area: No

Heated: No
Finished: Yes
Enclosed: No
Contiguous: Yes
Permitted: Yes
Wet Space: No
Addition: No
Conversion: No

20 Floor 2 - Garage



Dimensions: 21'9" x 42'5"
Area: 924 sq. ft
Counted as Living Area: No

Heated: No
Finished: No
Enclosed: Yes
Contiguous: Yes
Permitted: Yes
Wet Space: No
Addition: No
Conversion: No

21 Floor 2 - Patio



Dimensions: 14'6" x 23'8"
Area: 345 sq. ft
Counted as Living Area: No

Heated: No
Finished: Yes
Enclosed: No
Contiguous: Yes
Permitted: Yes
Wet Space: No
Addition: No
Conversion: No

22 Floor 2 - Foyer



Dimensions: 23'4" x 16'9"
Area: 374 sq. ft
Counted as Living Area:
Yes

Heated: Yes
Finished: Yes
Enclosed: Yes
Contiguous:
Yes
Permitted: Yes
Wet Space: No
Addition: No
Conversion: No

23 Floor 2 - Living Room



Dimensions: 23'3" x 32'5"
Area: 648 sq. ft
Counted as Living Area:
Yes

Heated: Yes
Finished: Yes
Enclosed: Yes
Contiguous:
Yes
Permitted: Yes
Wet Space: No
Addition: No
Conversion: No

24 Floor 2 - Laundry



Dimensions: 6'6" x 11'6"
Area: 75 sq. ft
Counted as Living Area:
Yes

Heated: Yes
Finished: Yes
Enclosed: Yes
Contiguous:
Yes
Permitted: Yes
Wet Space: No
Addition: No
Conversion: No

25 Floor 2 - Kitchen



Dimensions: 15'7" x 15'2"
Area: 235 sq. ft
Counted as Living Area:
Yes

Heated: Yes
Finished: Yes
Enclosed: Yes
Contiguous:
Yes
Permitted: Yes
Wet Space: No
Addition: No
Conversion: No

26 Floor 2 - Bath



Dimensions: 14'7" x 6'0"
Area: 80 sq. ft
Counted as Living Area:
Yes

Heated: Yes
Finished: Yes
Enclosed: Yes
Contiguous:
Yes
Permitted: Yes
Wet Space: Yes
Addition: No
Conversion: No

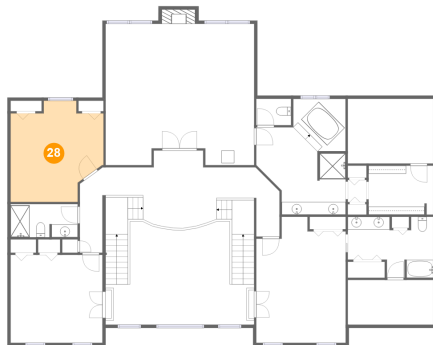
27 Floor 2 - Hall



Dimensions: 6'7" x 20'0"
Area: 98 sq. ft
Counted as Living Area:
Yes

Heated: Yes
Finished: Yes
Enclosed: Yes
Contiguous:
Yes
Permitted: Yes
Wet Space: No
Addition: No
Conversion: No

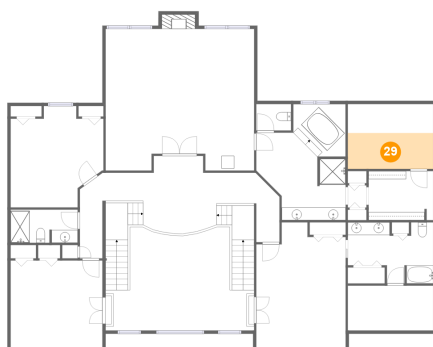
28 Floor 3 - Bedroom



Dimensions: 14'7" x 15'11"
Area: 195 sq. ft
Counted as Living Area:
Yes

Heated: Yes
Finished: Yes
Enclosed: Yes
Contiguous:
Yes
Permitted: Yes
Wet Space: No
Addition: No
Conversion: No

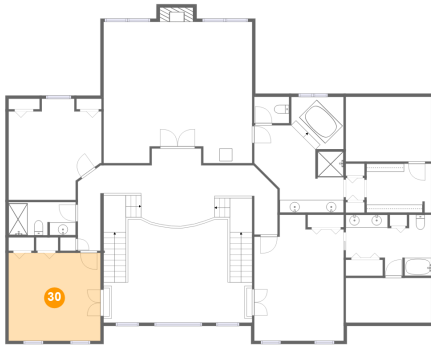
29 Floor 3 - Storage



Dimensions: 13'5" x 10'2"
Area: 76 sq. ft
Counted as Living Area: No

Heated: No
Finished: No
Enclosed: No
Contiguous: No
Permitted: Yes
Wet Space: No
Addition: No
Conversion: No

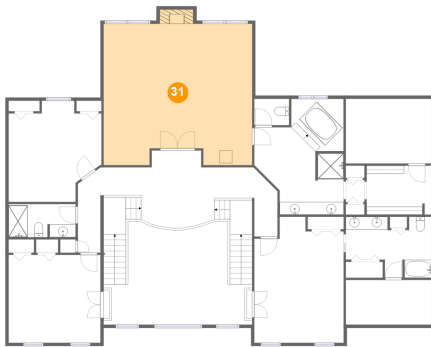
30 Floor 3 - Bedroom



Dimensions: 14'5" x 13'10"
Area: 199 sq. ft
Counted as Living Area:
Yes

Heated: Yes
Finished: Yes
Enclosed: Yes
Contiguous:
Yes
Permitted: Yes
Wet Space: No
Addition: No
Conversion: No

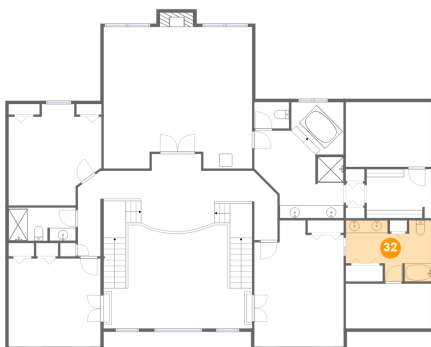
31 Floor 3 - Primary Bedroom



Dimensions: 23'4" x 22'2"
Area: 508 sq. ft
Counted as Living Area:
Yes

Heated: Yes
Finished: Yes
Enclosed: Yes
Contiguous:
Yes
Permitted: Yes
Wet Space: No
Addition: No
Conversion: No

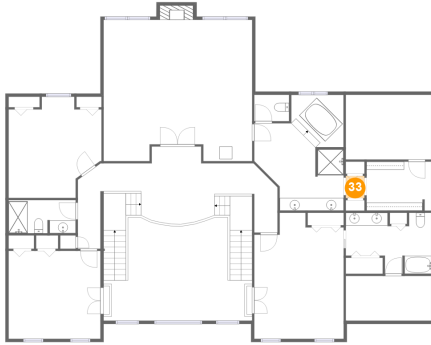
32 Floor 3 - Bath



Dimensions: 13'5" x 9'7"
Area: 103 sq. ft
Counted as Living Area:
Yes

Heated: Yes
Finished: Yes
Enclosed: Yes
Contiguous:
Yes
Permitted: Yes
Wet Space: Yes
Addition: No
Conversion: No

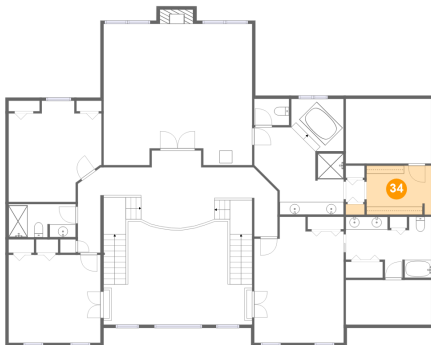
33 Floor 3 - Hall



Dimensions: 2'11" x 3'6"
Area: 10 sq. ft
Counted as Living Area:
Yes

Heated: Yes
Finished: Yes
Enclosed: Yes
Contiguous:
Yes
Permitted: Yes
Wet Space: No
Addition: No
Conversion: No

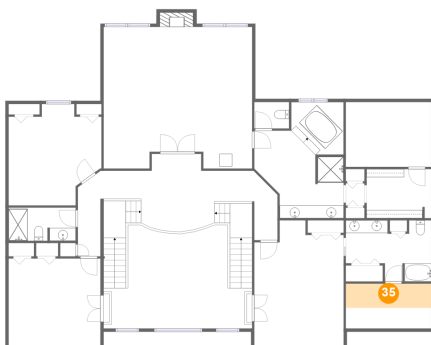
34 Floor 3 - W.i.c.



Dimensions: 13'5" x 7'8"
Area: 83 sq. ft
Counted as Living Area:
Yes

Heated: Yes
Finished: Yes
Enclosed: Yes
Contiguous:
Yes
Permitted: Yes
Wet Space: No
Addition: No
Conversion: No

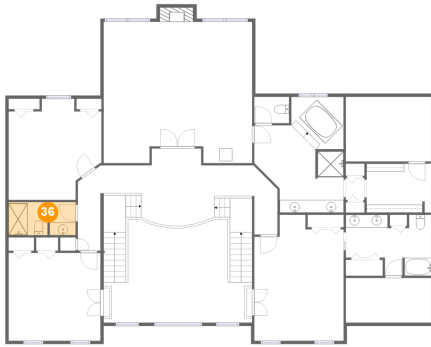
35 Floor 3 - Storage



Dimensions: 13'5" x 7'0"
Area: 51 sq. ft
Counted as Living Area: No

Heated: No
Finished: No
Enclosed: No
Contiguous: No
Permitted: Yes
Wet Space: No
Addition: No
Conversion: No

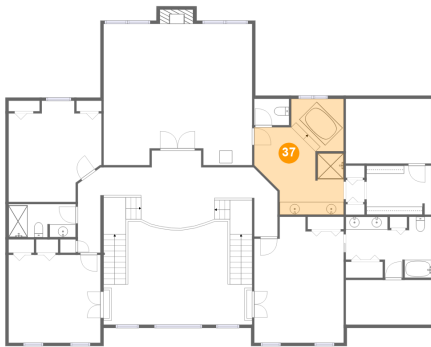
36 Floor 3 - Bath



Dimensions: 10'7" x 5'3"
Area: 54 sq. ft
Counted as Living Area:
Yes

Heated: Yes
Finished: Yes
Enclosed: Yes
Contiguous:
Yes
Permitted: Yes
Wet Space: Yes
Addition: No
Conversion: No

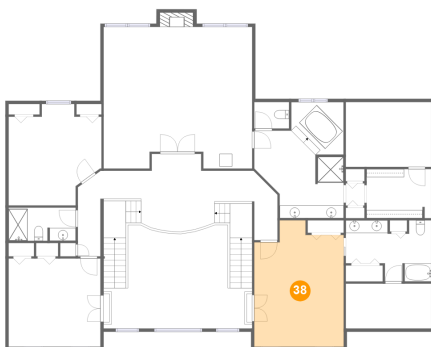
37 Floor 3 - Primary Bath



Dimensions: 14'1" x 18'2"
Area: 204 sq. ft
Counted as Living Area:
Yes

Heated: Yes
Finished: Yes
Enclosed: Yes
Contiguous:
Yes
Permitted: Yes
Wet Space: Yes
Addition: No
Conversion: No

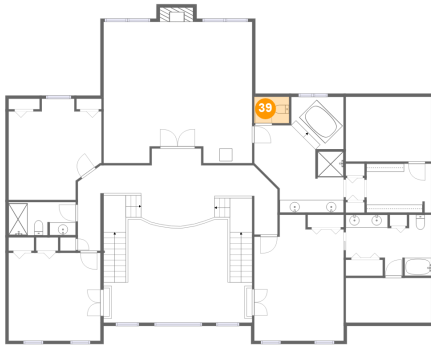
38 Floor 3 - Bedroom



Dimensions: 14'0" x 19'9"
Area: 251 sq. ft
Counted as Living Area:
Yes

Heated: Yes
Finished: Yes
Enclosed: Yes
Contiguous:
Yes
Permitted: Yes
Wet Space: No
Addition: No
Conversion: No

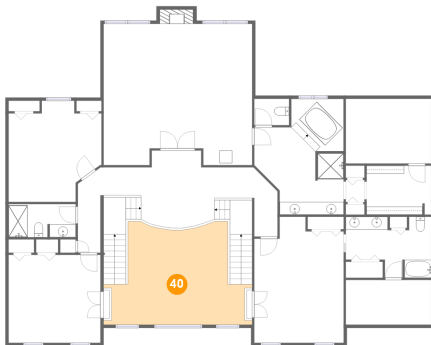
39 Floor 3 - Wc



Dimensions: 5'5" x 4'2"
Area: 23 sq. ft
Counted as Living Area:
Yes

Heated: Yes
Finished: Yes
Enclosed: Yes
Contiguous:
Yes
Permitted: Yes
Wet Space: Yes
Addition: No
Conversion: No

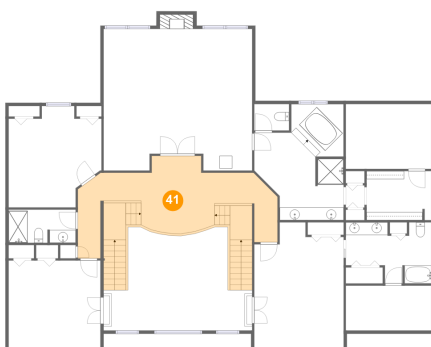
40 Floor 3 - Open To Below



Dimensions: 23'4" x 14'10"
Area: 280 sq. ft
Counted as Living Area: No

Heated: No
Finished: No
Enclosed: No
Contiguous: Yes
Permitted: No
Wet Space: No
Addition: No
Conversion: No

41 Floor 3 - Hall



Dimensions: 31'4" x 12'2"
Area: 385 sq. ft
Counted as Living Area:
Yes

Heated: Yes
Finished: Yes
Enclosed: Yes
Contiguous:
Yes
Permitted: Yes
Wet Space: No
Addition: No
Conversion: No