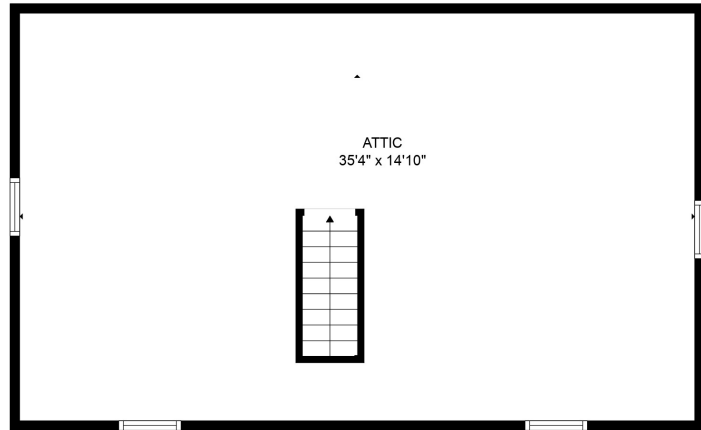
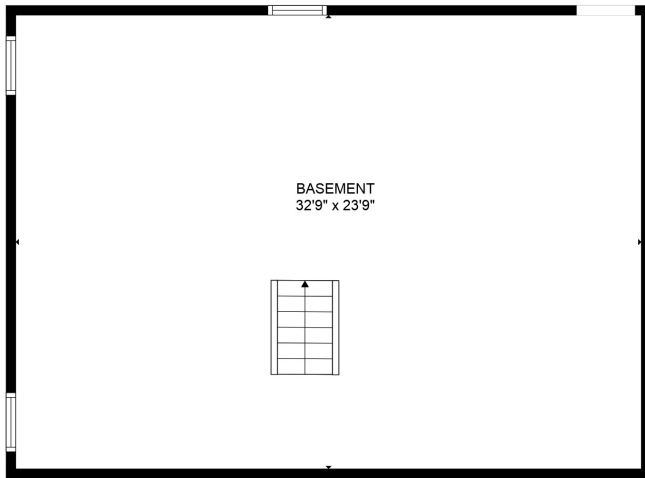


FLOOR 2



FLOOR 3



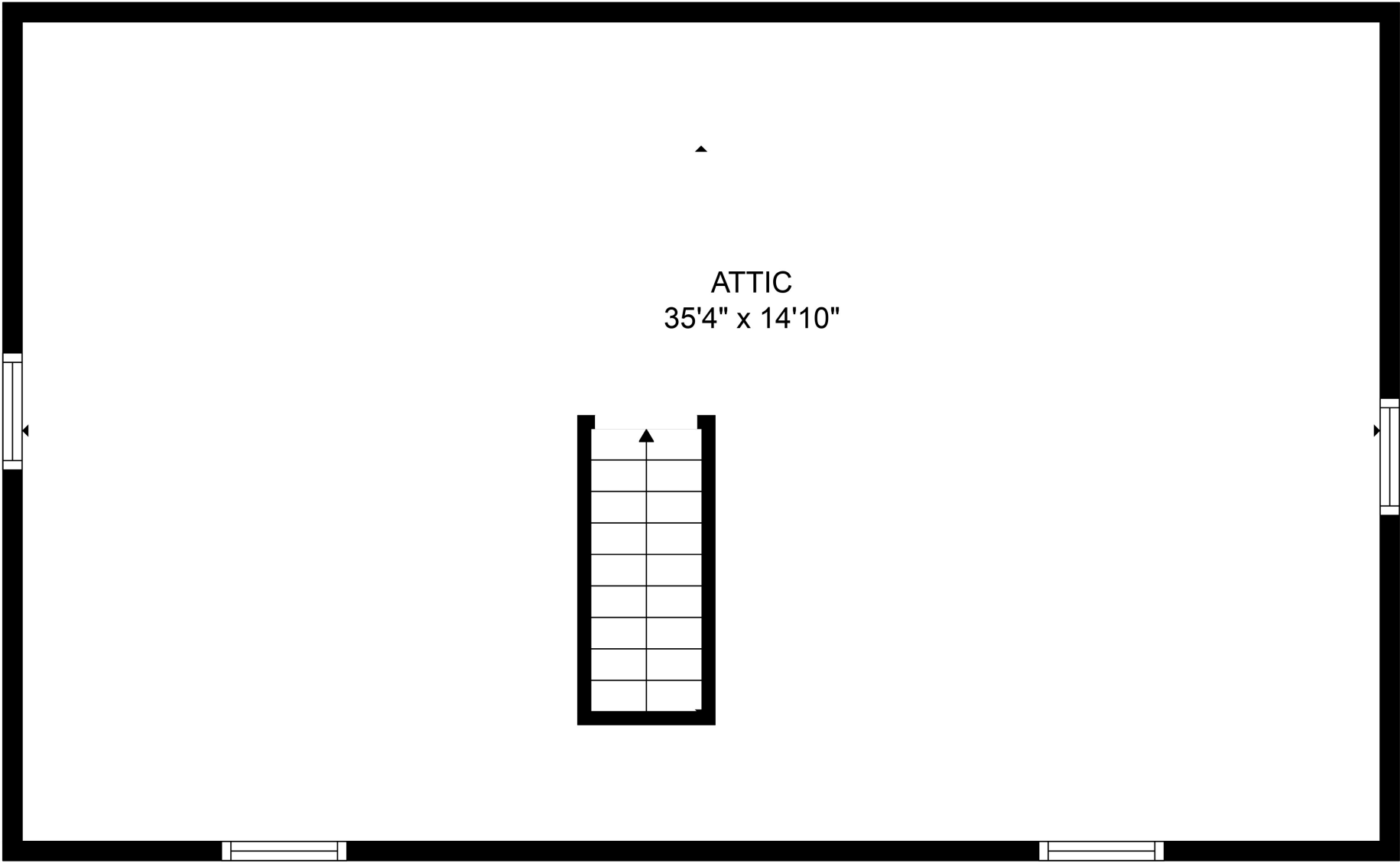
FLOOR 1



GROSS INTERNAL AREA
 Below Ground: 780 sq. ft, FLOOR 2: 898 sq. ft, FLOOR 3: 0 sq. ft
 EXCLUDED AREAS: LOW CEILING: 230 sq. ft, ATTIC: 526 sq. ft
 TOTAL: 1678 sq. ft

Floor plans are intended to give a general indication of the property layout. Sizes and dimensions are estimate, Actual may vary.

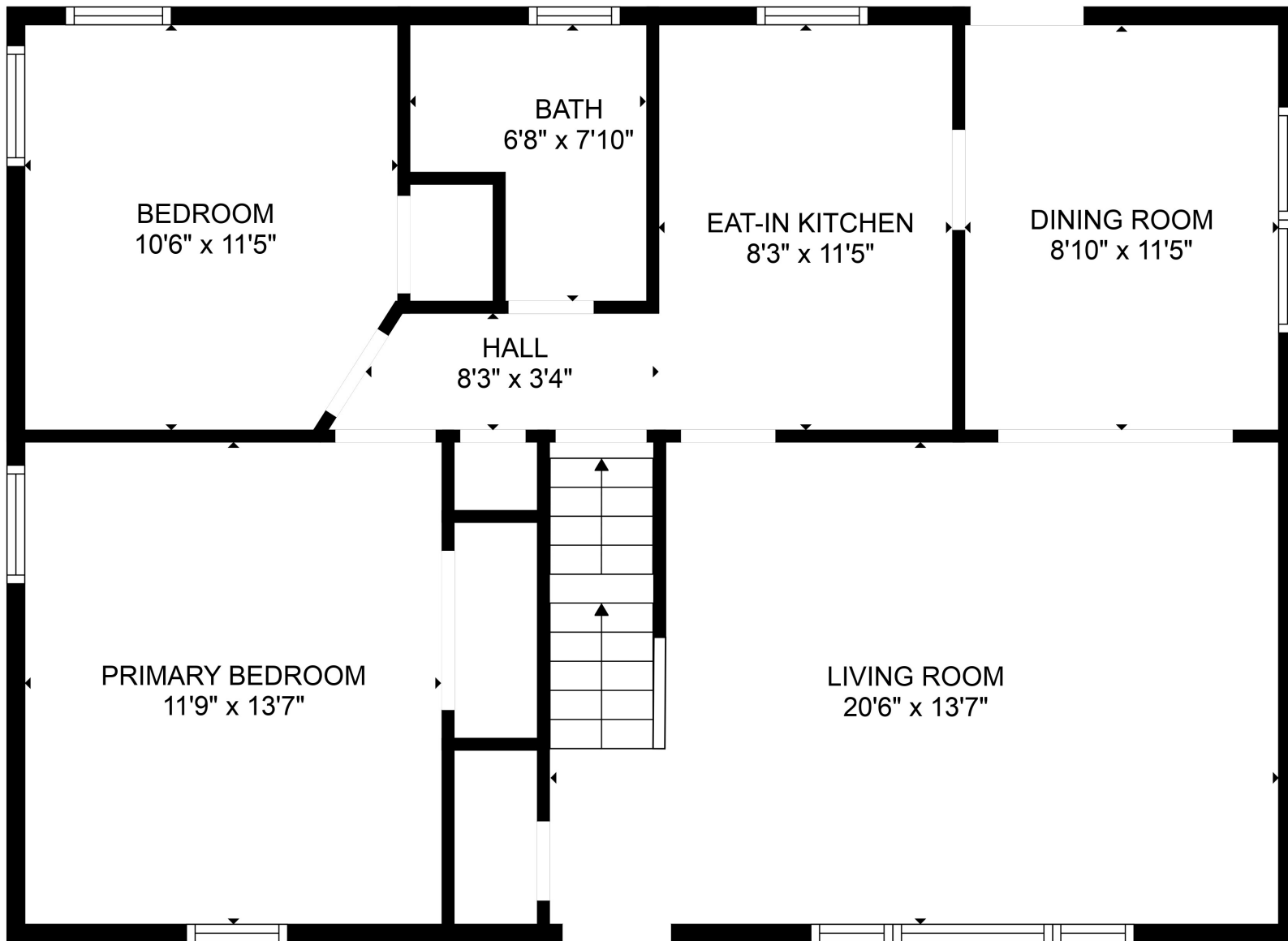




GROSS INTERNAL AREA
Below Ground: 780 sq. ft, FLOOR 2: 898 sq. ft, FLOOR 3: 0 sq. ft
EXCLUDED AREAS: LOW CEILING: 230 sq. ft, ATTIC: 526 sq. ft
TOTAL: 1678 sq. ft

Floor plans are intended to give a general indication of the property layout. Sizes and dimensions are estimate, Actual may vary.



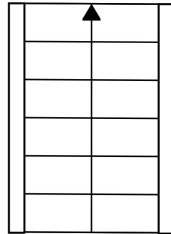


GROSS INTERNAL AREA
 Below Ground: 780 sq. ft, FLOOR 2: 898 sq. ft, FLOOR 3: 0 sq. ft
 EXCLUDED AREAS: LOW CEILING: 230 sq. ft, ATTIC: 526 sq. ft
 TOTAL: 1678 sq. ft

Floor plans are intended to give a general indication of the property layout. Sizes and dimensions are estimate, Actual may vary.



BASEMENT
32'9" x 23'9"



GROSS INTERNAL AREA
Below Ground: 780 sq. ft, FLOOR 2: 898 sq. ft, FLOOR 3: 0 sq. ft
EXCLUDED AREAS: LOW CEILING: 230 sq. ft, ATTIC: 526 sq. ft
TOTAL: 1678 sq. ft

Floor plans are intended to give a general indication of the property layout. Sizes and dimensions are estimate, Actual may vary.

