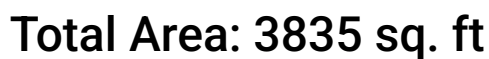


**1410 Fire Rock Loop, Templeton, San Luis Obispo County,  
California, United States, 93465**



Excluded: Garage 1036 sq. ft, Walls: 248 sq. ft

## Property summary



Home report

**1410 Fire Rock Loop, Templeton, San Luis Obispo County,  
California, United States, 93465**



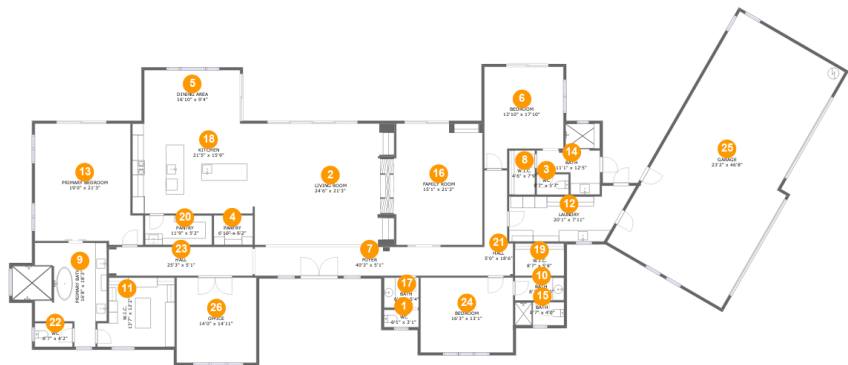
**1**  
Half baths



**1**  
Garages

Home report

1410 Fire Rock Loop, Templeton, San Luis Obispo County,  
California, United States, 93465



Room dimensions

Floor 1 Total:3835sqft Excluded: 1036sqft

#		Max Dimensions	sqft	Included
1	WC	6'1" x 3'1"	19 sq. ft	Yes
2	Living Room	24'6" x 21'3"	522 sq. ft	Yes
3	WC	5'7" x 3'7"	20 sq. ft	Yes
4	Pantry	6'10" x 5'2"	35 sq. ft	Yes
5	Dining Area	16'10" x 9'4"	157 sq. ft	Yes
6	Bedroom	13'10" x 17'10"	212 sq. ft	Yes
7	Foyer	40'3" x 5'1"	203 sq. ft	Yes
8	W.I.C.	4'6" x 7'9"	35 sq. ft	Yes
9	Primary Bath	16'8" x 18'3"	214 sq. ft	Yes
10	Bath	8'7" x 4'0"	34 sq. ft	Yes
11	W.I.C.	13'7" x 12'2"	149 sq. ft	Yes

## Home report

**1410 Fire Rock Loop, Templeton, San Luis Obispo County,  
California, United States, 93465**

#		Max Dimensions	sqft	Included
12	Laundry	20'1" x 7'11"	160 sq. ft	Yes
13	Primary Bedroom	19'0" x 21'3"	359 sq. ft	Yes
14	Bath	11'1" x 12'5"	90 sq. ft	Yes
15	Bath	8'7" x 4'0"	35 sq. ft	Yes
16	Family Room	15'1" x 21'3"	322 sq. ft	Yes
17	Bath	6'1" x 5'4"	32 sq. ft	Yes
18	Kitchen	21'5" x 15'9"	338 sq. ft	Yes
19	W.I.C.	8'7" x 5'8"	49 sq. ft	Yes
20	Pantry	11'9" x 5'2"	61 sq. ft	Yes
21	Hall	5'0" x 18'6"	80 sq. ft	Yes
22	WC	6'7" x 4'2"	27 sq. ft	Yes
23	Hall	25'3" x 5'1"	128 sq. ft	Yes
24	Bedroom	16'3" x 13'1"	213 sq. ft	Yes
25	Garage	23'2" x 46'8"	1036 sq. ft	No
26	Office	14'0" x 14'11"	209 sq. ft	Yes

1410 Fire Rock Loop, Templeton, San Luis Obispo County,  
California, United States, 93465

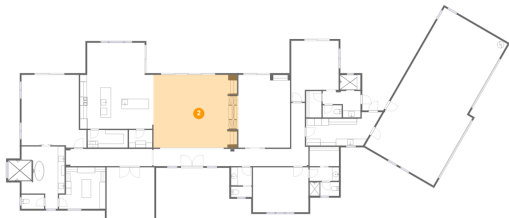
1 Floor 1 - WC



Max Dimensions: 6'1" x 3'1"  
Calculated Area: 19 sq. ft  
Included: Yes

Heated: Yes  
Finished: Yes  
Enclosed: Yes  
Contiguous: Yes  
Permitted: Yes  
Wet space: Yes  
Addition: No  
Conversion: No

2 Floor 1 - Living Room



Max Dimensions: 24'6" x 21'3"  
Calculated Area: 522 sq. ft  
Included: Yes

Heated: Yes  
Finished: Yes  
Enclosed: Yes  
Contiguous: Yes  
Permitted: Yes  
Wet space: No  
Addition: No  
Conversion: No

1410 Fire Rock Loop, Templeton, San Luis Obispo County,  
California, United States, 93465

### 3 Floor 1 - WC



Max Dimensions: 5'7" x 3'7"  
Calculated Area: 20 sq. ft  
Included: Yes

Heated: Yes  
Finished: Yes  
Enclosed: Yes  
Contiguous: Yes  
Permitted: Yes  
Wet space: Yes  
Addition: No  
Conversion: No

### 4 Floor 1 - Pantry



Max Dimensions: 6'10" x 5'2"  
Calculated Area: 35 sq. ft  
Included: Yes

Heated: Yes  
Finished: Yes  
Enclosed: Yes  
Contiguous: Yes  
Permitted: Yes  
Wet space: No  
Addition: No  
Conversion: No

### 5 Floor 1 - Dining Area



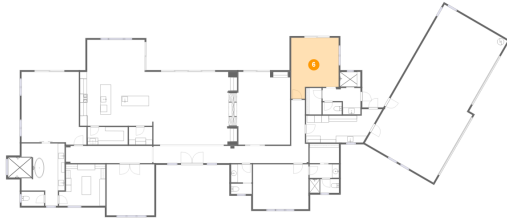
Max Dimensions: 16'10" x 9'4"  
Calculated Area: 157 sq. ft  
Included: Yes

Heated: Yes  
Finished: Yes  
Enclosed: Yes  
Contiguous: Yes  
Permitted: Yes  
Wet space: No  
Addition: No  
Conversion: No

1410 Fire Rock Loop, Templeton, San Luis Obispo County,  
California, United States, 93465

**6** Floor 1 - Bedroom

---

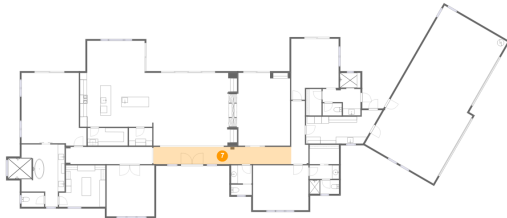


Max Dimensions: 13'10" x 17'10"  
Calculated Area: 212 sq. ft  
Included: Yes

Heated: Yes  
Finished: Yes  
Enclosed: Yes  
Contiguous: Yes  
Permitted: Yes  
Wet space: No  
Addition: No  
Conversion: No

**7** Floor 1 - Foyer

---



Max Dimensions: 40'3" x 5'1"  
Calculated Area: 203 sq. ft  
Included: Yes

Heated: Yes  
Finished: Yes  
Enclosed: Yes  
Contiguous: Yes  
Permitted: Yes  
Wet space: No  
Addition: No  
Conversion: No

**8** Floor 1 - W.I.C.

---



Max Dimensions: 4'6" x 7'9"  
Calculated Area: 35 sq. ft  
Included: Yes

Heated: Yes  
Finished: Yes  
Enclosed: Yes  
Contiguous: Yes  
Permitted: Yes  
Wet space: No  
Addition: No  
Conversion: No

1410 Fire Rock Loop, Templeton, San Luis Obispo County,  
California, United States, 93465

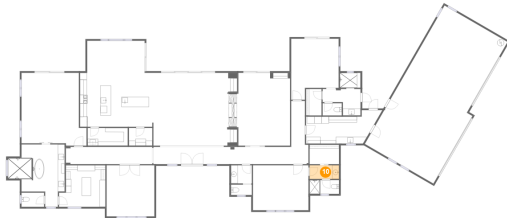
9 Floor 1 - Primary Bath



Max Dimensions: 16'8" x 18'3"  
Calculated Area: 214 sq. ft  
Included: Yes

Heated: Yes  
Finished: Yes  
Enclosed: Yes  
Contiguous: Yes  
Permitted: Yes  
Wet space: Yes  
Addition: No  
Conversion: No

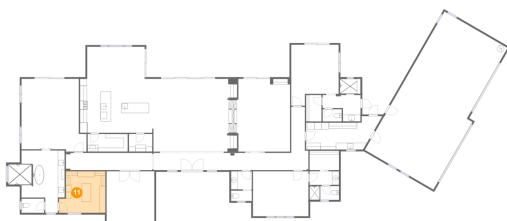
10 Floor 1 - Bath



Max Dimensions: 8'7" x 4'0"  
Calculated Area: 34 sq. ft  
Included: Yes

Heated: Yes  
Finished: Yes  
Enclosed: Yes  
Contiguous: Yes  
Permitted: Yes  
Wet space: Yes  
Addition: No  
Conversion: No

11 Floor 1 - W.I.C.



Max Dimensions: 13'7" x 12'2"  
Calculated Area: 149 sq. ft  
Included: Yes

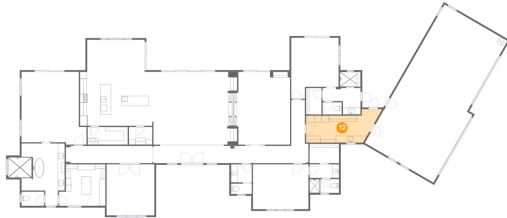
Heated: Yes  
Finished: Yes  
Enclosed: Yes  
Contiguous: Yes  
Permitted: Yes  
Wet space: No  
Addition: No  
Conversion: No



1410 Fire Rock Loop, Templeton, San Luis Obispo County,  
California, United States, 93465

**12** Floor 1 - Laundry

---

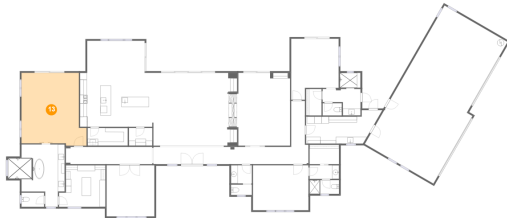


Max Dimensions: 20'1" x 7'11"  
Calculated Area: 160 sq. ft  
Included: Yes

Heated: Yes  
Finished: Yes  
Enclosed: Yes  
Contiguous: Yes  
Permitted: Yes  
Wet space: No  
Addition: No  
Conversion: No

**13** Floor 1 - Primary Bedroom

---



Max Dimensions: 19'0" x 21'3"  
Calculated Area: 359 sq. ft  
Included: Yes

Heated: Yes  
Finished: Yes  
Enclosed: Yes  
Contiguous: Yes  
Permitted: Yes  
Wet space: No  
Addition: No  
Conversion: No

**14** Floor 1 - Bath

---



Max Dimensions: 11'1" x 12'5"  
Calculated Area: 90 sq. ft  
Included: Yes

Heated: Yes  
Finished: Yes  
Enclosed: Yes  
Contiguous: Yes  
Permitted: Yes  
Wet space: Yes  
Addition: No  
Conversion: No

1410 Fire Rock Loop, Templeton, San Luis Obispo County,  
California, United States, 93465

**15** Floor 1 - Bath

---

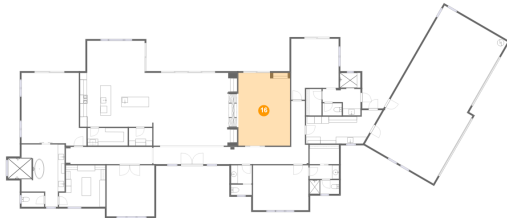


Max Dimensions: 8'7" x 4'0"  
Calculated Area: 35 sq. ft  
Included: Yes

Heated: Yes  
Finished: Yes  
Enclosed: Yes  
Contiguous: Yes  
Permitted: Yes  
Wet space: Yes  
Addition: No  
Conversion: No

**16** Floor 1 - Family Room

---



Max Dimensions: 15'1" x 21'3"  
Calculated Area: 322 sq. ft  
Included: Yes

Heated: Yes  
Finished: Yes  
Enclosed: Yes  
Contiguous: Yes  
Permitted: Yes  
Wet space: No  
Addition: No  
Conversion: No

**17** Floor 1 - Bath

---



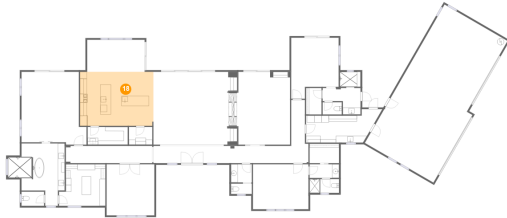
Max Dimensions: 6'1" x 5'4"  
Calculated Area: 32 sq. ft  
Included: Yes

Heated: Yes  
Finished: Yes  
Enclosed: Yes  
Contiguous: Yes  
Permitted: Yes  
Wet space: Yes  
Addition: No  
Conversion: No

1410 Fire Rock Loop, Templeton, San Luis Obispo County,  
California, United States, 93465

**18** Floor 1 - Kitchen

---



Max Dimensions: 21'5" x 15'9"  
Calculated Area: 338 sq. ft  
Included: Yes

Heated: Yes  
Finished: Yes  
Enclosed: Yes  
Contiguous: Yes  
Permitted: Yes  
Wet space: No  
Addition: No  
Conversion: No

**19** Floor 1 - W.I.C.

---

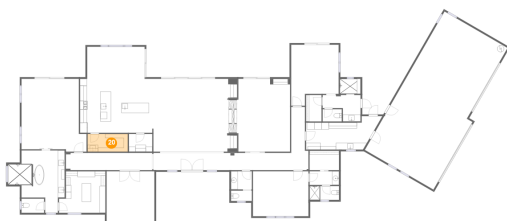


Max Dimensions: 8'7" x 5'8"  
Calculated Area: 49 sq. ft  
Included: Yes

Heated: Yes  
Finished: Yes  
Enclosed: Yes  
Contiguous: Yes  
Permitted: Yes  
Wet space: No  
Addition: No  
Conversion: No

**20** Floor 1 - Pantry

---

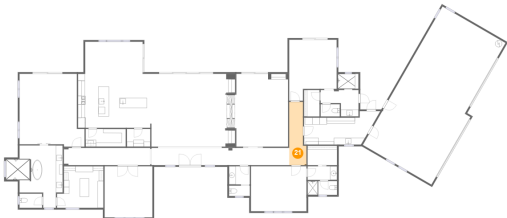


Max Dimensions: 11'9" x 5'2"  
Calculated Area: 61 sq. ft  
Included: Yes

Heated: Yes  
Finished: Yes  
Enclosed: Yes  
Contiguous: Yes  
Permitted: Yes  
Wet space: No  
Addition: No  
Conversion: No

1410 Fire Rock Loop, Templeton, San Luis Obispo County,  
California, United States, 93465

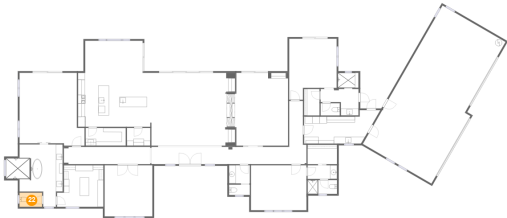
21 Floor 1 - Hall



Max Dimensions: 5'0" x 18'6"  
Calculated Area: 80 sq. ft  
Included: Yes

Heated: Yes  
Finished: Yes  
Enclosed: Yes  
Contiguous: Yes  
Permitted: Yes  
Wet space: No  
Addition: No  
Conversion: No

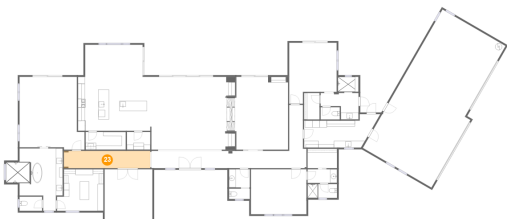
22 Floor 1 - WC



Max Dimensions: 6'7" x 4'2"  
Calculated Area: 27 sq. ft  
Included: Yes

Heated: Yes  
Finished: Yes  
Enclosed: Yes  
Contiguous: Yes  
Permitted: Yes  
Wet space: Yes  
Addition: No  
Conversion: No

23 Floor 1 - Hall



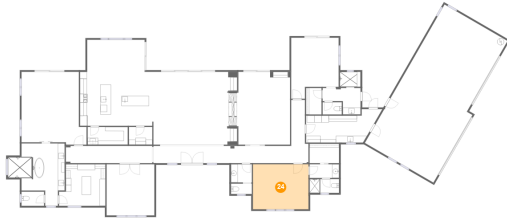
Max Dimensions: 25'3" x 5'1"  
Calculated Area: 128 sq. ft  
Included: Yes

Heated: Yes  
Finished: Yes  
Enclosed: Yes  
Contiguous: Yes  
Permitted: Yes  
Wet space: No  
Addition: No  
Conversion: No

1410 Fire Rock Loop, Templeton, San Luis Obispo County,  
California, United States, 93465

**24** Floor 1 - Bedroom

---

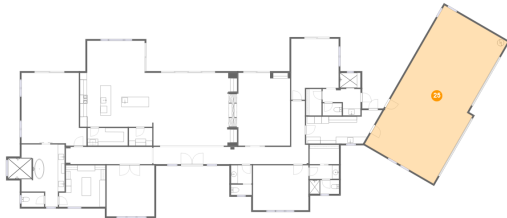


Max Dimensions: 16'3" x 13'1"  
Calculated Area: 213 sq. ft  
Included: Yes

Heated: Yes  
Finished: Yes  
Enclosed: Yes  
Contiguous: Yes  
Permitted: Yes  
Wet space: No  
Addition: No  
Conversion: No

**25** Floor 1 - Garage

---

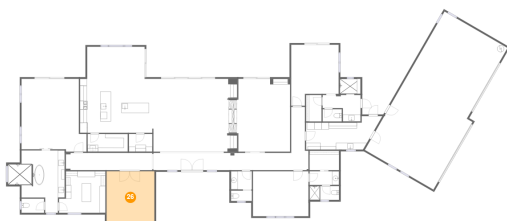


Max Dimensions: 23'2" x 46'8"  
Calculated Area: 1036 sq. ft  
Included: No

Heated: No  
Finished: No  
Enclosed: Yes  
Contiguous: Yes  
Permitted: Yes  
Wet space: No  
Addition: No  
Conversion: No

**26** Floor 1 - Office

---



Max Dimensions: 14'0" x 14'11"  
Calculated Area: 209 sq. ft  
Included: Yes

Heated: Yes  
Finished: Yes  
Enclosed: Yes  
Contiguous: Yes  
Permitted: Yes  
Wet space: No  
Addition: No  
Conversion: No