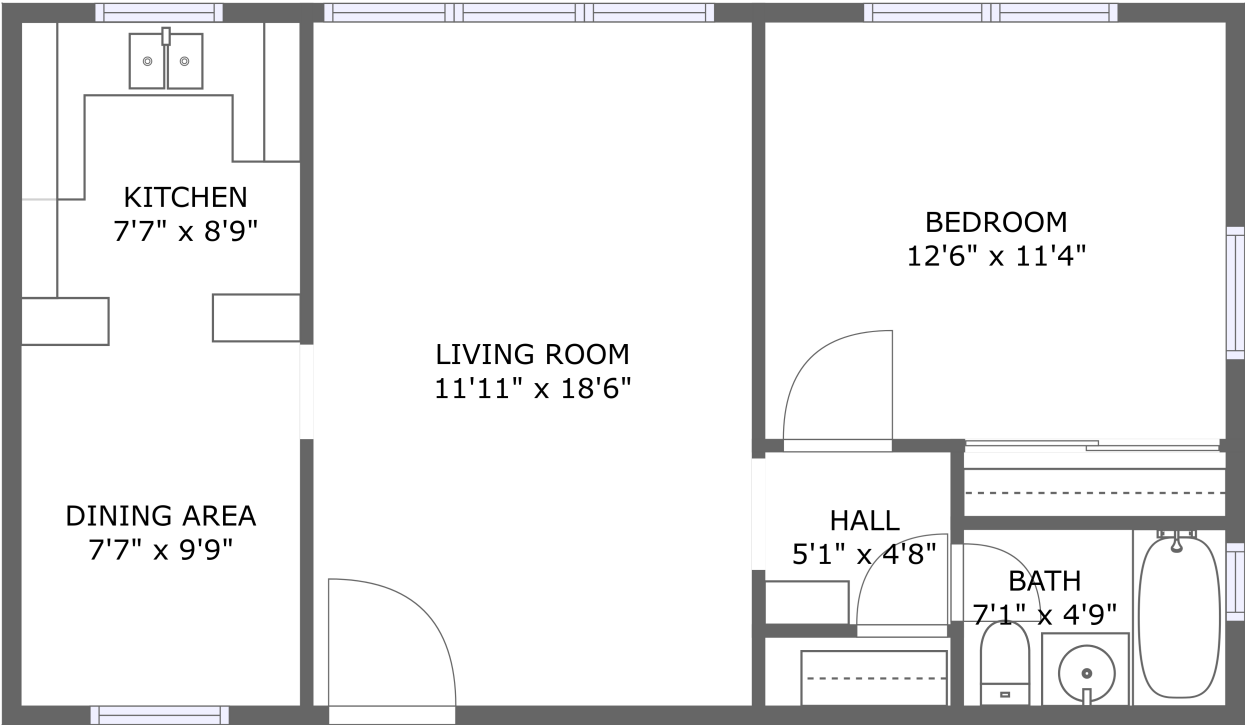


4075 Venice Blvd.,#10,Los Angeles,CA,US, #10




FLOOR 1

Property summary


 **0** Garages


 **1** Bedrooms

 **1** Bathrooms

 **0** Half baths

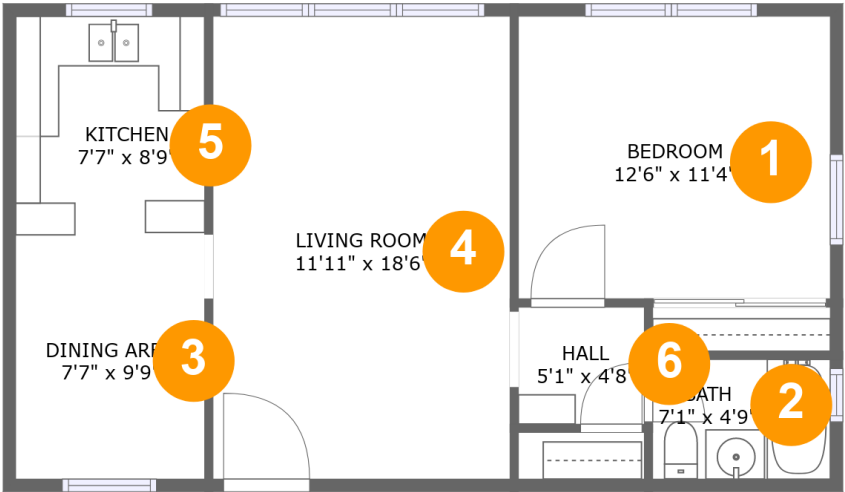
 **1** Floors

 **606** Gross living area sqft

 **606** Total sqft

Home report

4075 Venice Blvd.,#10,Los Angeles,CA,US, #10

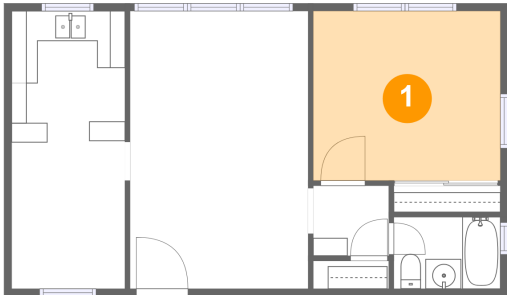


Room dimensions

Floor 1 Total sqft: 606    Living area: 606

#		Dimensions	sqft	Counted as living area
1	Bedroom	12'6" x 11'4"	141 sq. ft	Yes
2	Bath	7'1" x 4'9"	34 sq. ft	Yes
3	Dining Area	7'7" x 9'9"	74 sq. ft	Yes
4	Living Room	11'11" x 18'6"	221 sq. ft	Yes
5	Kitchen	7'7" x 8'9"	66 sq. ft	Yes
6	Hall	5'1" x 4'8"	24 sq. ft	Yes

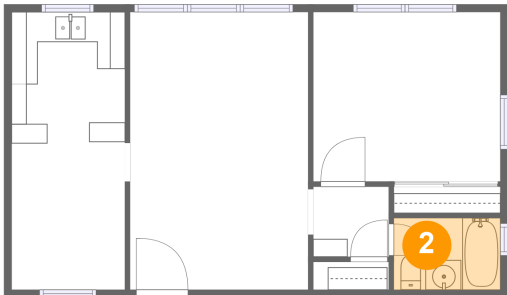
1 Floor 1 - Bedroom



Dimensions: 12'6" x 11'4"  
Area: 141 sq. ft  
Counted as living area: Yes

Heated: Yes  
Finished: Yes  
Enclosed: Yes  
Contiguous: Yes  
Permitted: Yes  
Wet space: No  
Addition: No  
Conversion: No

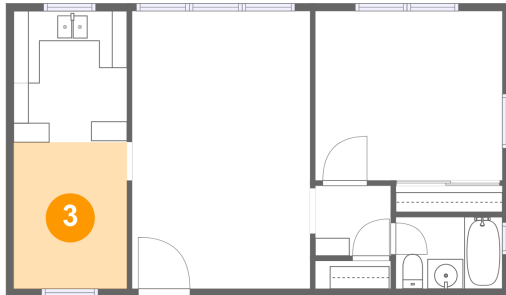
2 Floor 1 - Bath



Dimensions: 7'1" x 4'9"  
Area: 34 sq. ft  
Counted as living area: Yes

Heated: Yes  
Finished: Yes  
Enclosed: Yes  
Contiguous: Yes  
Permitted: Yes  
Wet space: Yes  
Addition: No  
Conversion: No

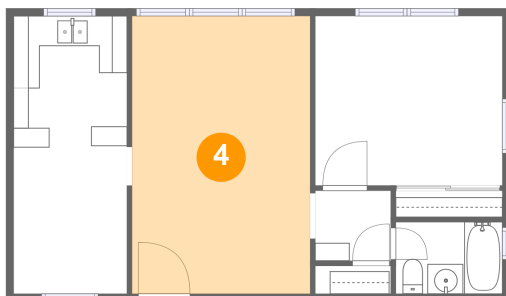
### 3 Floor 1 - Dining Area



Dimensions: 7'7" x 9'9"  
Area: 74 sq. ft  
Counted as living area: Yes

Heated: Yes  
Finished: Yes  
Enclosed: Yes  
Contiguous: Yes  
Permitted: Yes  
Wet space: No  
Addition: No  
Conversion: No

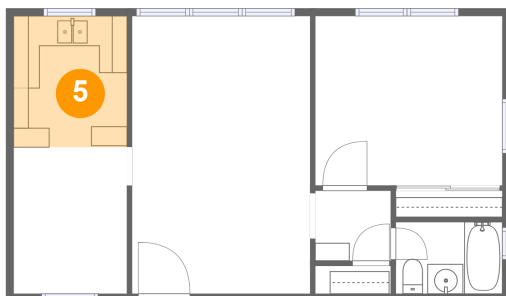
### 4 Floor 1 - Living Room



Dimensions: 11'11" x 18'6"  
Area: 221 sq. ft  
Counted as living area: Yes

Heated: Yes  
Finished: Yes  
Enclosed: Yes  
Contiguous: Yes  
Permitted: Yes  
Wet space: No  
Addition: No  
Conversion: No

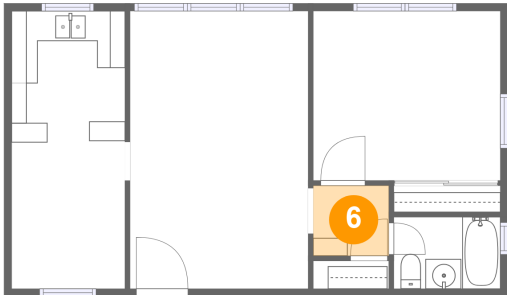
### 5 Floor 1 - Kitchen



Dimensions: 7'7" x 8'9"  
Area: 66 sq. ft  
Counted as living area: Yes

Heated: Yes  
Finished: Yes  
Enclosed: Yes  
Contiguous: Yes  
Permitted: Yes  
Wet space: No  
Addition: No  
Conversion: No

6 Floor 1 - Hall



Dimensions: 5'1" x 4'8"  
Area: 24 sq. ft  
Counted as living area: Yes

Heated: Yes  
Finished: Yes  
Enclosed: Yes  
Contiguous: Yes  
Permitted: Yes  
Wet space: No  
Addition: No  
Conversion: No