


2145 Memorial Avenue Southwest, Raleigh Court, Roanoke, Roanoke, Virginia, United States, 24015



Property summary

 **0** Garages

 **3** Bedrooms

 **4** Bathrooms

 **0** Half baths

 **4** Floors

 **2,440** Gross living area sqft

 **5,453** Total sqft

**2145 Memorial Avenue Southwest, Raleigh Court,
Roanoke, Roanoke, Virginia, United States, 24015**



Room dimensions

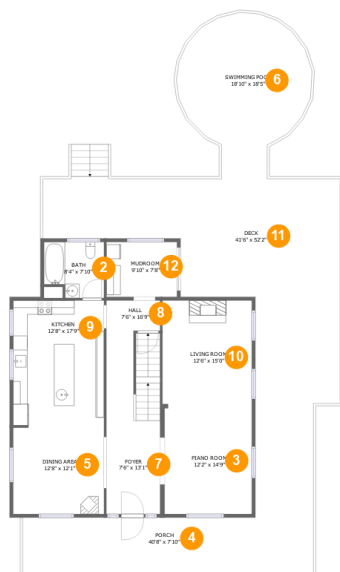
Floor 1

Total sqft: 1137

Living area: 0

#		Dimensions	sqft	Counted as living area
1	Basement	33'4" x 38'0"	1056 sq. ft	No

2145 Memorial Avenue Southwest, Raleigh Court, Roanoke, Roanoke, Virginia, United States, 24015



Room dimensions

Floor 2

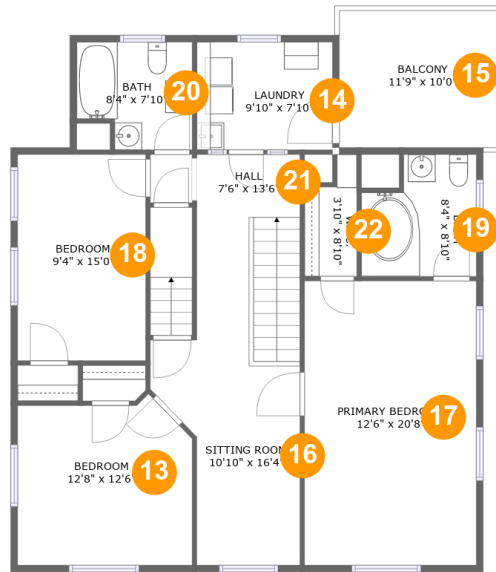
Total sqft: 2429 Living area: 1220

#		Dimensions	sqft	Counted as living area
2	Bath	8'4" x 7'10"	60 sq. ft	Yes
3	Recreation Room	12'2" x 14'9"	180 sq. ft	Yes
4	Outdoor	40'8" x 7'10"	319 sq. ft	No
5	Dining Room	12'8" x 12'1"	153 sq. ft	Yes
6	Swimming Pool	18'10" x 18'5"	278 sq. ft	No
7	Entry	7'6" x 13'1"	98 sq. ft	Yes
8	Hall	7'6" x 16'9"	122 sq. ft	Yes
9	Kitchen	12'8" x 17'9"	225 sq. ft	Yes
10	Living Room	12'6" x 15'0"	188 sq. ft	Yes
11	Outdoor	41'6" x 52'2"	890 sq. ft	No
12	Mudroom	9'10" x 7'8"	76 sq. ft	Yes

Scan captured on Tue, 14 Jan 2025 20:16:52 GMT

Information is calculated by Cubicasa technology deemed highly reliable but not guaranteed.

**2145 Memorial Avenue Southwest, Raleigh Court,
Roanoke, Roanoke, Virginia, United States, 24015**



Room dimensions

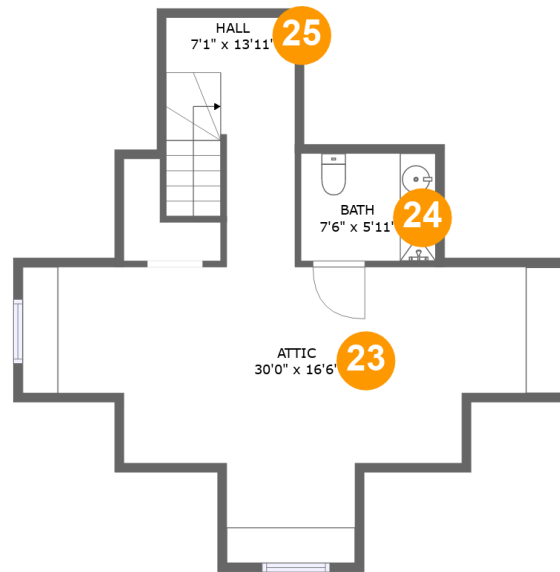
Floor 3

Total sqft: 1337

Living area: 1220

#		Dimensions	sqft	Counted as living area
13	Bedroom	12'8" x 12'6"	145 sq. ft	Yes
14	Utility	9'10" x 7'10"	77 sq. ft	Yes
15	Outdoor	11'9" x 10'0"	117 sq. ft	No
16	Living Room	10'10" x 16'4"	136 sq. ft	Yes
17	Bedroom	12'6" x 20'8"	258 sq. ft	Yes
18	Bedroom	9'4" x 15'0"	140 sq. ft	Yes
19	Bath	8'4" x 8'10"	66 sq. ft	Yes
20	Bath	8'4" x 7'10"	60 sq. ft	Yes
21	Hall	7'6" x 13'6"	107 sq. ft	Yes
22	Cl	3'10" x 8'10"	28 sq. ft	Yes

2145 Memorial Avenue Southwest, Raleigh Court,
Roanoke, Roanoke, Virginia, United States, 24015



Room dimensions

Floor 4

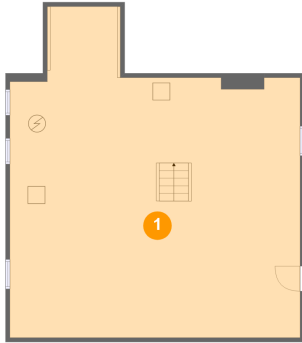
Total sqft: 550

Living area: 0

#		Dimensions	sqft	Counted as living area
23	Attic	30'0" x 16'6"	324 sq. ft	No
24	Bath	7'6" x 5'11"	44 sq. ft	No
25	Hall	7'1" x 13'11"	89 sq. ft	No

**2145 Memorial Avenue Southwest, Raleigh Court,
Roanoke, Roanoke, Virginia, United States, 24015**

1 Floor 1 - Basement



Dimensions: 33'4" x 38'0"
Area: 1056 sq. ft
Counted as living area: No

Heated: Yes
Finished: No
Enclosed: Yes
Contiguous: Yes
Permitted: Yes
Wet space: No
Addition: No
Conversion: No

2 Floor 2 - Bath



Dimensions: 8'4" x 7'10"
Area: 60 sq. ft
Counted as living area: Yes

Heated: Yes
Finished: Yes
Enclosed: Yes
Contiguous: Yes
Permitted: Yes
Wet space: Yes
Addition: No
Conversion: No

2145 Memorial Avenue Southwest, Raleigh Court,
Roanoke, Roanoke, Virginia, United States, 24015

3 Floor 2 - Recreation Room



Dimensions: 12'2" x 14'9"
Area: 180 sq. ft
Counted as living area: Yes

Heated: Yes
Finished: Yes
Enclosed: Yes
Contiguous: Yes
Permitted: Yes
Wet space: No
Addition: No
Conversion: No

4 Floor 2 - Outdoor



Dimensions: 40'8" x 7'10"
Area: 319 sq. ft
Counted as living area: No

Heated: No
Finished: Yes
Enclosed: No
Contiguous: Yes
Permitted: Yes
Wet space: No
Addition: No
Conversion: No

5 Floor 2 - Dining Room



Dimensions: 12'8" x 12'1"
Area: 153 sq. ft
Counted as living area: Yes

Heated: Yes
Finished: Yes
Enclosed: Yes
Contiguous: Yes
Permitted: Yes
Wet space: No
Addition: No
Conversion: No

**2145 Memorial Avenue Southwest, Raleigh Court,
Roanoke, Roanoke, Virginia, United States, 24015**

6 Floor 2 - Swimming Pool



Dimensions: 18'10" x 18'5"
Area: 278 sq. ft
Counted as living area: No

Heated: No
Finished: No
Enclosed: No
Contiguous: Yes
Permitted: No
Wet space: No
Addition: No
Conversion: No

7 Floor 2 - Entry



Dimensions: 7'6" x 13'1"
Area: 98 sq. ft
Counted as living area: Yes

Heated: Yes
Finished: Yes
Enclosed: Yes
Contiguous: Yes
Permitted: Yes
Wet space: No
Addition: No
Conversion: No

8 Floor 2 - Hall



Dimensions: 7'6" x 16'9"
Area: 122 sq. ft
Counted as living area: Yes

Heated: Yes
Finished: Yes
Enclosed: Yes
Contiguous: Yes
Permitted: Yes
Wet space: No
Addition: No
Conversion: No

**2145 Memorial Avenue Southwest, Raleigh Court,
Roanoke, Roanoke, Virginia, United States, 24015**

9 Floor 2 - Kitchen



Dimensions: 12'8" x 17'9"
Area: 225 sq. ft
Counted as living area: Yes

Heated: Yes
Finished: Yes
Enclosed: Yes
Contiguous: Yes
Permitted: Yes
Wet space: No
Addition: No
Conversion: No

10 Floor 2 - Living Room



Dimensions: 12'6" x 15'0"
Area: 188 sq. ft
Counted as living area: Yes

Heated: Yes
Finished: Yes
Enclosed: Yes
Contiguous: Yes
Permitted: Yes
Wet space: No
Addition: No
Conversion: No

11 Floor 2 - Outdoor



Dimensions: 41'6" x 52'2"
Area: 890 sq. ft
Counted as living area: No

Heated: No
Finished: Yes
Enclosed: No
Contiguous: Yes
Permitted: Yes
Wet space: No
Addition: No
Conversion: No

2145 Memorial Avenue Southwest, Raleigh Court,
Roanoke, Roanoke, Virginia, United States, 24015

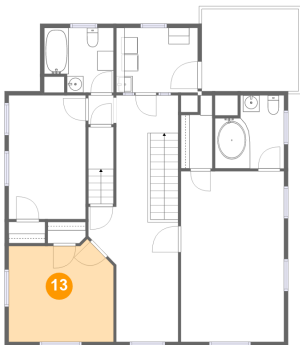
12 Floor 2 - Mudroom



Dimensions: 9'10" x 7'8"
Area: 76 sq. ft
Counted as living area: Yes

Heated: Yes
Finished: Yes
Enclosed: Yes
Contiguous: Yes
Permitted: Yes
Wet space: No
Addition: No
Conversion: No

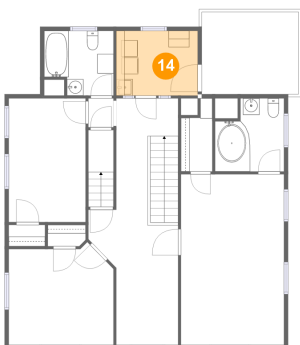
13 Floor 3 - Bedroom



Dimensions: 12'8" x 12'6"
Area: 145 sq. ft
Counted as living area: Yes

Heated: Yes
Finished: Yes
Enclosed: Yes
Contiguous: Yes
Permitted: Yes
Wet space: No
Addition: No
Conversion: No

14 Floor 3 - Utility

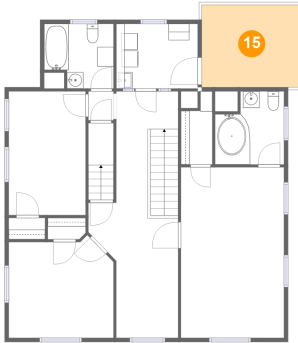


Dimensions: 9'10" x 7'10"
Area: 77 sq. ft
Counted as living area: Yes

Heated: Yes
Finished: Yes
Enclosed: Yes
Contiguous: Yes
Permitted: Yes
Wet space: No
Addition: No
Conversion: No

2145 Memorial Avenue Southwest, Raleigh Court,
Roanoke, Roanoke, Virginia, United States, 24015

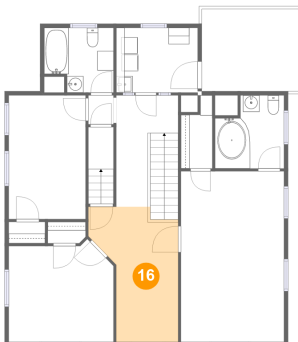
15 Floor 3 - Outdoor



Dimensions: 11'9" x 10'0"
Area: 117 sq. ft
Counted as living area: No

Heated: No
Finished: Yes
Enclosed: No
Contiguous: Yes
Permitted: Yes
Wet space: No
Addition: No
Conversion: No

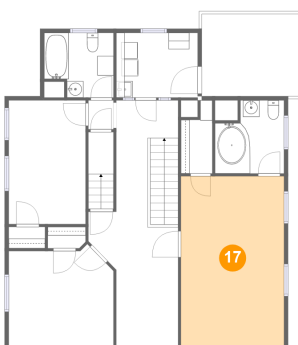
16 Floor 3 - Living Room



Dimensions: 10'10" x 16'4"
Area: 136 sq. ft
Counted as living area: Yes

Heated: Yes
Finished: Yes
Enclosed: Yes
Contiguous: Yes
Permitted: Yes
Wet space: No
Addition: No
Conversion: No

17 Floor 3 - Bedroom

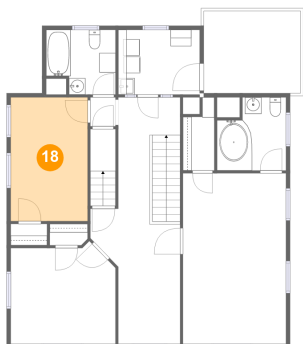


Dimensions: 12'6" x 20'8"
Area: 258 sq. ft
Counted as living area: Yes

Heated: Yes
Finished: Yes
Enclosed: Yes
Contiguous: Yes
Permitted: Yes
Wet space: No
Addition: No
Conversion: No

2145 Memorial Avenue Southwest, Raleigh Court,
Roanoke, Roanoke, Virginia, United States, 24015

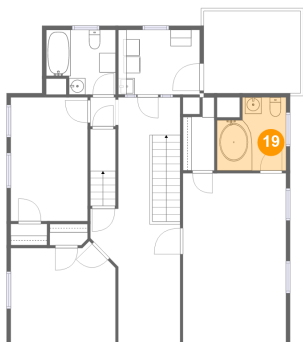
18 Floor 3 - Bedroom



Dimensions: 9'4" x 15'0"
Area: 140 sq. ft
Counted as living area: Yes

Heated: Yes
Finished: Yes
Enclosed: Yes
Contiguous: Yes
Permitted: Yes
Wet space: No
Addition: No
Conversion: No

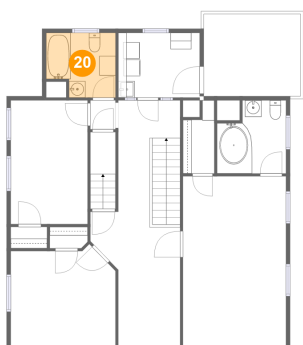
19 Floor 3 - Bath



Dimensions: 8'4" x 8'10"
Area: 66 sq. ft
Counted as living area: Yes

Heated: Yes
Finished: Yes
Enclosed: Yes
Contiguous: Yes
Permitted: Yes
Wet space: Yes
Addition: No
Conversion: No

20 Floor 3 - Bath

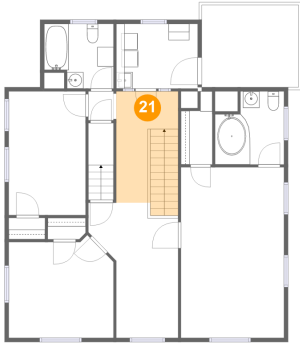


Dimensions: 8'4" x 7'10"
Area: 60 sq. ft
Counted as living area: Yes

Heated: Yes
Finished: Yes
Enclosed: Yes
Contiguous: Yes
Permitted: Yes
Wet space: Yes
Addition: No
Conversion: No

2145 Memorial Avenue Southwest, Raleigh Court,
Roanoke, Roanoke, Virginia, United States, 24015

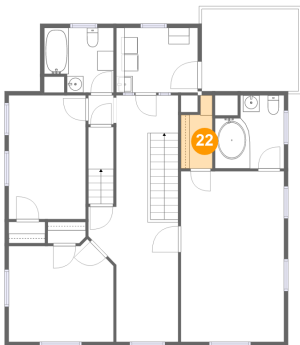
21 Floor 3 - Hall



Dimensions: 7'6" x 13'6"
Area: 107 sq. ft
Counted as living area: Yes

Heated: Yes
Finished: Yes
Enclosed: Yes
Contiguous: Yes
Permitted: Yes
Wet space: No
Addition: No
Conversion: No

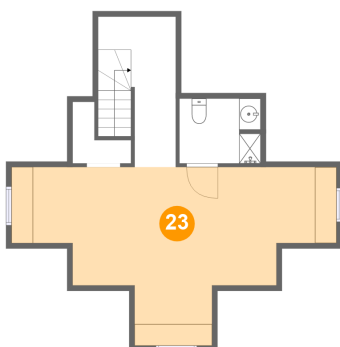
22 Floor 3 - Cl



Dimensions: 3'10" x 8'10"
Area: 28 sq. ft
Counted as living area: Yes

Heated: Yes
Finished: Yes
Enclosed: Yes
Contiguous: Yes
Permitted: Yes
Wet space: No
Addition: No
Conversion: No

23 Floor 4 - Attic

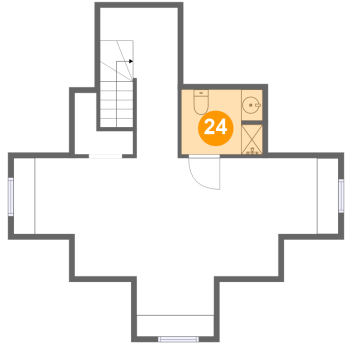


Dimensions: 30'0" x 16'6"
Area: 324 sq. ft
Counted as living area: No

Heated: No
Finished: No
Enclosed: Yes
Contiguous: No
Permitted: Yes
Wet space: No
Addition: No
Conversion: No

2145 Memorial Avenue Southwest, Raleigh Court,
Roanoke, Roanoke, Virginia, United States, 24015

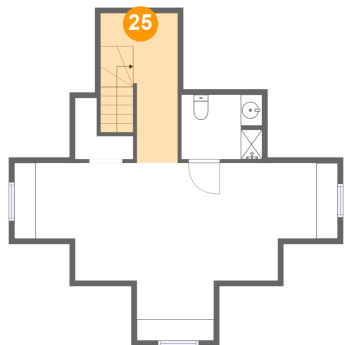
24 Floor 4 - Bath



Dimensions: 7'6" x 5'11"
Area: 44 sq. ft
Counted as living area: No

Heated: Yes
Finished: No
Enclosed: Yes
Contiguous: Yes
Permitted: Yes
Wet space: Yes
Addition: No
Conversion: No

25 Floor 4 - Hall



Dimensions: 7'1" x 13'11"
Area: 89 sq. ft
Counted as living area: No

Heated: Yes
Finished: No
Enclosed: Yes
Contiguous: Yes
Permitted: Yes
Wet space: No
Addition: No
Conversion: No