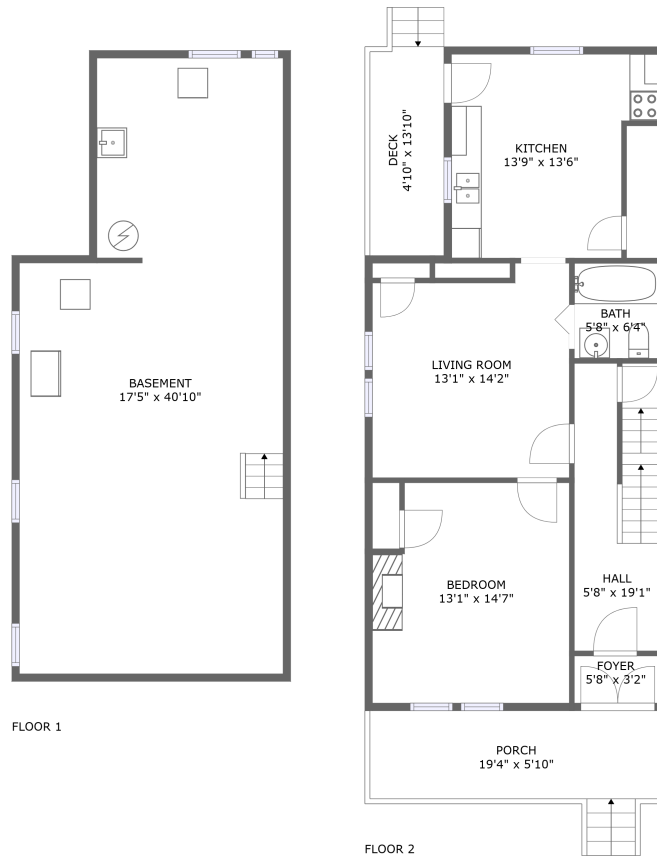






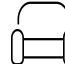
**531 Mifflin Avenue, Greater Park Place,
Wilkinsburg, Allegheny County, Pennsylvania,**



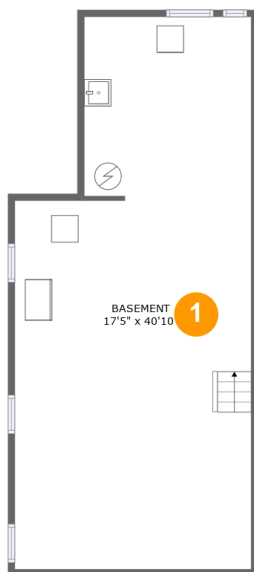
Property Summary

 **0** garages  **1** bedrooms  **1** bathrooms  **0** half baths

 **2** floors

 **810** Gross Living Area sqft

 **1,693** total sqft



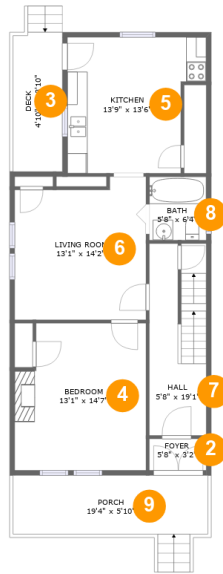
Room Dimensions

Floor 1

Total sqft: 703

Living area: 0

#	Room name	Dimensions	Area (sqft)	Counted as Living Area
1	Basement	17'5" x 40'10"	644 sq. ft	No



Room Dimensions

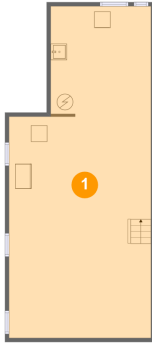
Floor 2

Total sqft: 990

Living area: 810

#	Room name	Dimensions	Area (sqft)	Counted as Living Area
2	Foyer	5'8" x 3'2"	18 sq. ft	Yes
3	Deck	4'10" x 13'10"	67 sq. ft	No
4	Bedroom	13'1" x 14'7"	181 sq. ft	Yes
5	Kitchen	13'9" x 13'6"	164 sq. ft	Yes
6	Living Room	13'1" x 14'2"	173 sq. ft	Yes
7	Hall	5'8" x 19'1"	105 sq. ft	Yes
8	Bath	5'8" x 6'4"	36 sq. ft	Yes
9	Porch	19'4" x 5'10"	113 sq. ft	No

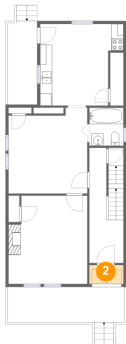
1 Floor 1 - Basement



Dimensions: 17'5" x 40'10"
Area: 644 sq. ft
Counted as Living Area: No

Heated: No
Finished: Yes
Enclosed: Yes
Contiguous: Yes
Permitted: Yes
Wet Space: No
Addition: No
Conversion: No

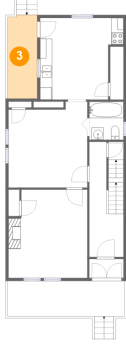
2 Floor 2 - Foyer



Dimensions: 5'8" x 3'2"
Area: 18 sq. ft
Counted as Living Area:
Yes

Heated: Yes
Finished: Yes
Enclosed: Yes
Contiguous:
Yes
Permitted: Yes
Wet Space: No
Addition: No
Conversion: No

3 Floor 2 - Deck



Dimensions: 4'10" x 13'10"
Area: 67 sq. ft
Counted as Living Area: No

Heated: No
Finished: Yes
Enclosed: No
Contiguous: Yes
Permitted: Yes
Wet Space: No
Addition: No
Conversion: No

4 Floor 2 - Bedroom



Dimensions: 13'1" x 14'7"
Area: 181 sq. ft
Counted as Living Area:
Yes

Heated: Yes
Finished: Yes
Enclosed: Yes
Contiguous:
Yes
Permitted: Yes
Wet Space: No
Addition: No
Conversion: No

5 Floor 2 - Kitchen



Dimensions: 13'9" x 13'6"
Area: 164 sq. ft
Counted as Living Area:
Yes

Heated: Yes
Finished: Yes
Enclosed: Yes
Contiguous:
Yes
Permitted: Yes
Wet Space: No
Addition: No
Conversion: No

6 Floor 2 - Living Room



Dimensions: 13'1" x 14'2"
Area: 173 sq. ft
Counted as Living Area:
Yes

Heated: Yes
Finished: Yes
Enclosed: Yes
Contiguous:
Yes
Permitted: Yes
Wet Space: No
Addition: No
Conversion: No

7 Floor 2 - Hall



Dimensions: 5'8" x 19'1"
Area: 105 sq. ft
Counted as Living Area:
Yes

Heated: Yes
Finished: Yes
Enclosed: Yes
Contiguous:
Yes
Permitted: Yes
Wet Space: No
Addition: No
Conversion: No

8 Floor 2 - Bath



Dimensions: 5'8" x 6'4"
Area: 36 sq. ft
Counted as Living Area:
Yes

Heated: Yes
Finished: Yes
Enclosed: Yes
Contiguous:
Yes
Permitted: Yes
Wet Space: Yes
Addition: No
Conversion: No

9 Floor 2 - Porch



Dimensions: 19'4" x 5'10"

Area: 113 sq. ft

Counted as Living Area: No

Heated: No

Finished: Yes

Enclosed: No

Contiguous: Yes

Permitted: Yes

Wet Space: No

Addition: No

Conversion: No