

Home report

2 Seaside Ln, Belleair, Florida, United States, 33756, 203



Total Area: 2283 sq. ft

Floor 1: 2283 sq. ft

Excluded: Utility 55 sq. ft, Outdoor Balcony 275 sq. ft, Walls: 119 sq. ft

Property summary

 **1** Floors

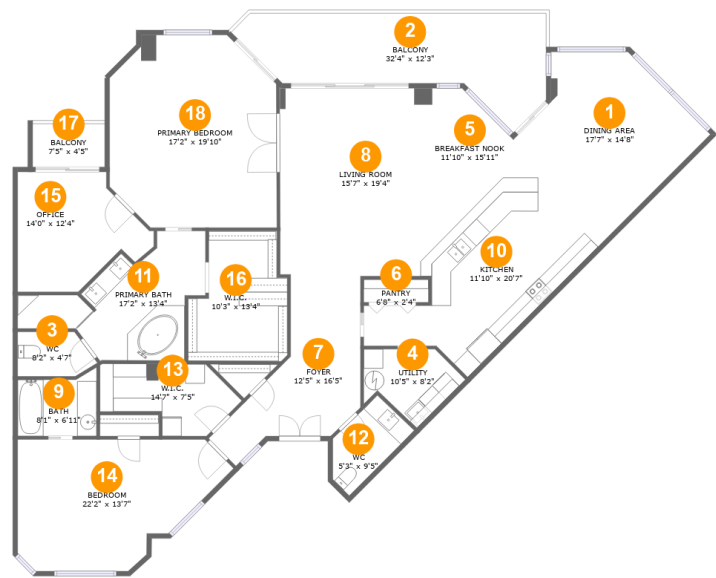
 **2** Bedrooms

 **2** Bathrooms

 **1** Half baths

Home report

2 Seaside Ln, Belleair, Florida, United States, 33756, 203



Room dimensions

Floor 1

Total:2283sqft Excluded: 330sqft

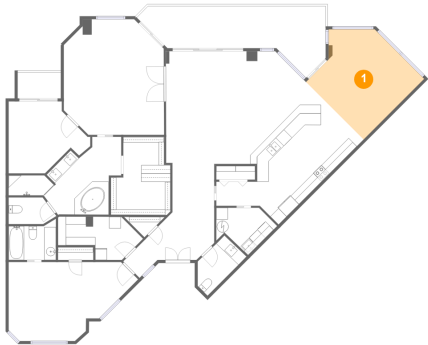
#		Max Dimensions	sqft	Included
1	Dining Area	17'7" x 14'8"	216 sq. ft	Yes
2	Balcony	32'4" x 12'3"	242 sq. ft	No
3	WC	8'2" x 4'7"	32 sq. ft	Yes
4	Utility	10'5" x 8'2"	55 sq. ft	No
5	Breakfast Nook	11'10" x 15'11"	99 sq. ft	Yes
6	Pantry	6'8" x 2'4"	16 sq. ft	Yes
7	Foyer	12'5" x 16'5"	157 sq. ft	Yes
8	Living Room	15'7" x 19'4"	301 sq. ft	Yes
9	Bath	8'1" x 6'11"	49 sq. ft	Yes
10	Kitchen	11'10" x 20'7"	246 sq. ft	Yes
11	Primary Bath	17'2" x 13'4"	147 sq. ft	Yes

Home report

2 Seaside Ln, Belleair, Florida, United States, 33756, 203

#		Max Dimensions	sqft	Included
12	WC	5'3" x 9'5"	46 sq. ft	Yes
13	W.I.C.	14'7" x 7'5"	79 sq. ft	Yes
14	Bedroom	22'2" x 13'7"	236 sq. ft	Yes
15	Office	14'0" x 12'4"	130 sq. ft	Yes
16	W.I.C.	10'3" x 13'4"	117 sq. ft	Yes
17	Balcony	7'5" x 4'5"	33 sq. ft	No
18	Primary Bedroom	17'2" x 19'10"	309 sq. ft	Yes

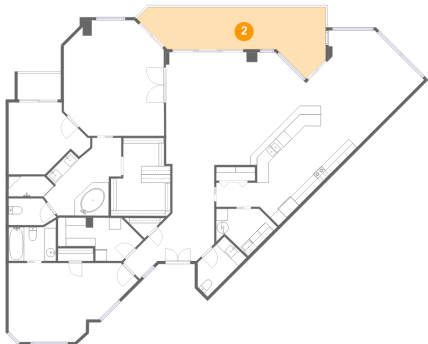
1 Floor 1 - Dining Area



Max Dimensions: 17'7" x 14'8"
Calculated Area: 216 sq. ft
Included: Yes

Heated: Yes
Finished: Yes
Enclosed: Yes
Contiguous: Yes
Permitted: Yes
Wet space: No
Addition: No
Conversion: No

2 Floor 1 - Balcony



Max Dimensions: 32'4" x 12'3"
Calculated Area: 242 sq. ft
Included: No

Heated: No
Finished: Yes
Enclosed: No
Contiguous: Yes
Permitted: Yes
Wet space: No
Addition: No
Conversion: No

3 Floor 1 - WC



Max Dimensions: 8'2" x 4'7"
Calculated Area: 32 sq. ft
Included: Yes

Heated: Yes
Finished: Yes
Enclosed: Yes
Contiguous: Yes
Permitted: Yes
Wet space: Yes
Addition: No
Conversion: No

4 Floor 1 - Utility



Max Dimensions: 10'5" x 8'2"
Calculated Area: 55 sq. ft
Included: No

Heated: Yes
Finished: No
Enclosed: Yes
Contiguous: Yes
Permitted: Yes
Wet space: No
Addition: No
Conversion: No

5 Floor 1 - Breakfast Nook



Max Dimensions: 11'10" x 15'11"
Calculated Area: 99 sq. ft
Included: Yes

Heated: Yes
Finished: Yes
Enclosed: Yes
Contiguous: Yes
Permitted: Yes
Wet space: No
Addition: No
Conversion: No

6 Floor 1 - Pantry



Max Dimensions: 6'8" x 2'4"
Calculated Area: 16 sq. ft
Included: Yes

Heated: Yes
Finished: Yes
Enclosed: Yes
Contiguous: Yes
Permitted: Yes
Wet space: No
Addition: No
Conversion: No

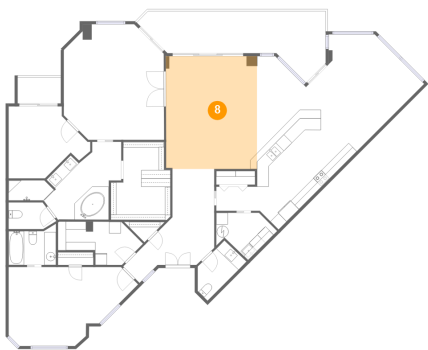
7 Floor 1 - Foyer



Max Dimensions: 12'5" x 16'5"
Calculated Area: 157 sq. ft
Included: Yes

Heated: Yes
Finished: Yes
Enclosed: Yes
Contiguous: Yes
Permitted: Yes
Wet space: No
Addition: No
Conversion: No

8 Floor 1 - Living Room



Max Dimensions: 15'7" x 19'4"
Calculated Area: 301 sq. ft
Included: Yes

Heated: Yes
Finished: Yes
Enclosed: Yes
Contiguous: Yes
Permitted: Yes
Wet space: No
Addition: No
Conversion: No

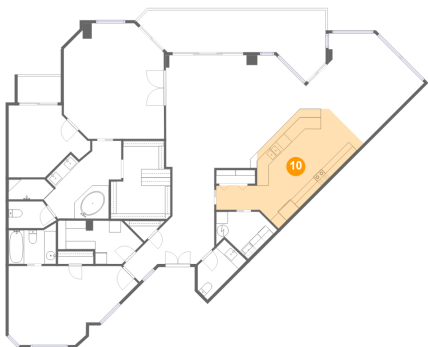
9 Floor 1 - Bath



Max Dimensions: 8'1" x 6'11"
Calculated Area: 49 sq. ft
Included: Yes

Heated: Yes
Finished: Yes
Enclosed: Yes
Contiguous: Yes
Permitted: Yes
Wet space: Yes
Addition: No
Conversion: No

10 Floor 1 - Kitchen



Max Dimensions: 11'10" x 20'7"
Calculated Area: 246 sq. ft
Included: Yes

Heated: Yes
Finished: Yes
Enclosed: Yes
Contiguous: Yes
Permitted: Yes
Wet space: No
Addition: No
Conversion: No

11 Floor 1 - Primary Bath



Max Dimensions: 17'2" x 13'4"
Calculated Area: 147 sq. ft
Included: Yes

Heated: Yes
Finished: Yes
Enclosed: Yes
Contiguous: Yes
Permitted: Yes
Wet space: Yes
Addition: No
Conversion: No

12 Floor 1 - WC



Max Dimensions: 5'3" x 9'5"
Calculated Area: 46 sq. ft
Included: Yes

Heated: Yes
Finished: Yes
Enclosed: Yes
Contiguous: Yes
Permitted: Yes
Wet space: Yes
Addition: No
Conversion: No

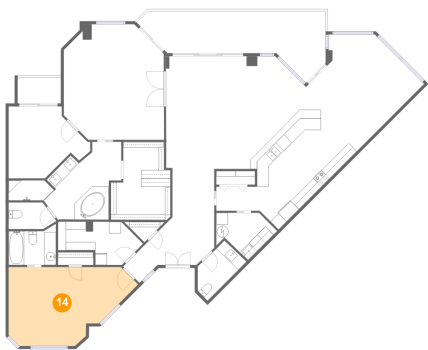
13 Floor 1 - W.I.C.



Max Dimensions: 14'7" x 7'5"
Calculated Area: 79 sq. ft
Included: Yes

Heated: Yes
Finished: Yes
Enclosed: Yes
Contiguous: Yes
Permitted: Yes
Wet space: No
Addition: No
Conversion: No

14 Floor 1 - Bedroom



Max Dimensions: 22'2" x 13'7"
Calculated Area: 236 sq. ft
Included: Yes

Heated: Yes
Finished: Yes
Enclosed: Yes
Contiguous: Yes
Permitted: Yes
Wet space: No
Addition: No
Conversion: No

15 Floor 1 - Office



Max Dimensions: 14'0" x 12'4"
Calculated Area: 130 sq. ft
Included: Yes

Heated: Yes
Finished: Yes
Enclosed: Yes
Contiguous: Yes
Permitted: Yes
Wet space: No
Addition: No
Conversion: No

16 Floor 1 - W.I.C.



Max Dimensions: 10'3" x 13'4"
Calculated Area: 117 sq. ft
Included: Yes

Heated: Yes
Finished: Yes
Enclosed: Yes
Contiguous: Yes
Permitted: Yes
Wet space: No
Addition: No
Conversion: No

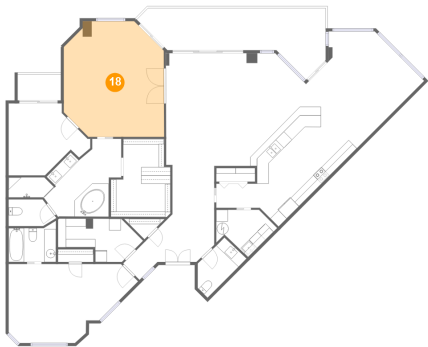
17 Floor 1 - Balcony



Max Dimensions: 7'5" x 4'5"
Calculated Area: 33 sq. ft
Included: No

Heated: No
Finished: Yes
Enclosed: No
Contiguous: Yes
Permitted: Yes
Wet space: No
Addition: No
Conversion: No

18 Floor 1 - Primary Bedroom



Max Dimensions: 17'2" x 19'10"
Calculated Area: 309 sq. ft
Included: Yes

Heated: Yes
Finished: Yes
Enclosed: Yes
Contiguous: Yes
Permitted: Yes
Wet space: No
Addition: No
Conversion: No