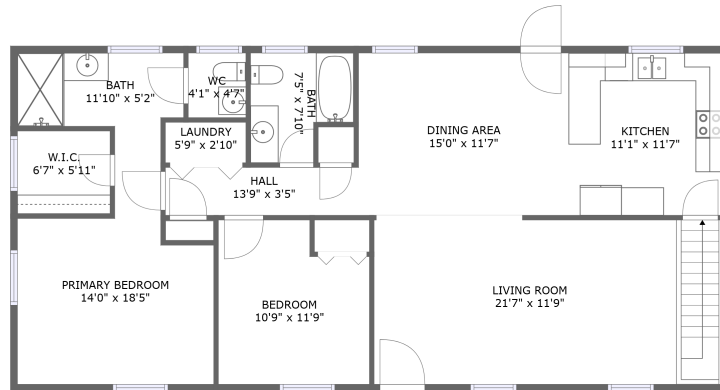
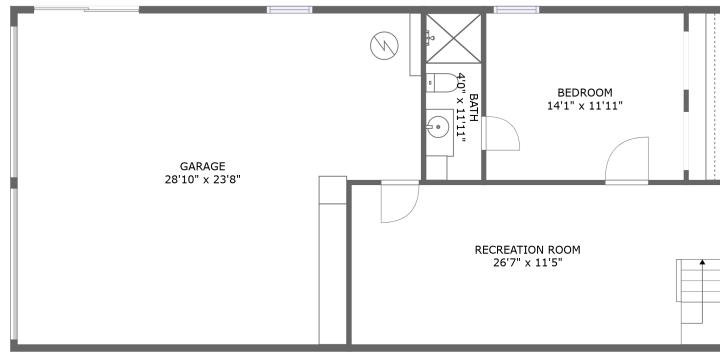


2609 Valley Brook Circle Northeast, Northeast Huntsville, Huntsville, Madison County,



FLOOR 2




FLOOR 1

Property Summary

 **1** garages

 **3** bedrooms

 **3** bathrooms

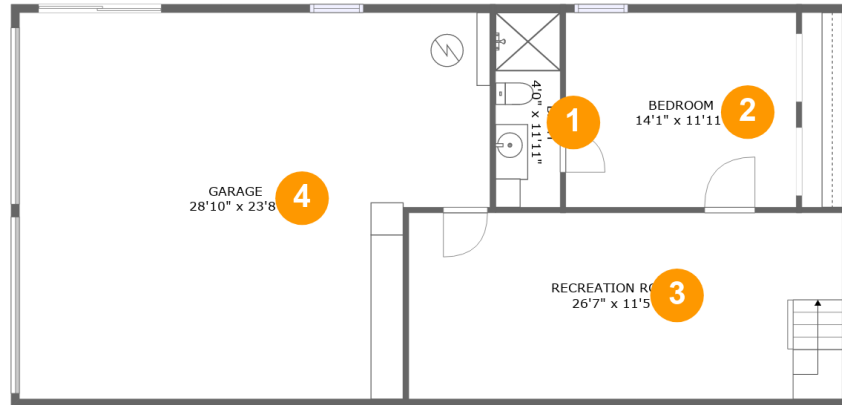
 **0** half baths

 **2** floors

 **1,877** Gross Living Area sqft

 **2,535** total sqft

2609 Valley Brook Circle Northeast, Northeast Huntsville, Huntsville, Madison County,



Room Dimensions

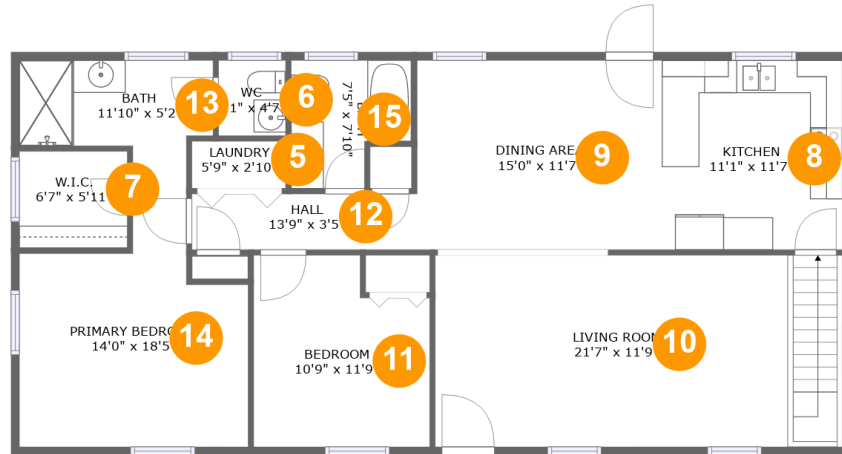
Floor 1

Total sqft: 1268

Living area: 610

#	Room name	Dimensions	Area (sqft)	Counted as Living Area
1	Bath	4'0" x 11'11"	47 sq. ft	Yes
2	Bedroom	14'1" x 11'11"	168 sq. ft	Yes
3	Recreation Room	26'7" x 11'5"	303 sq. ft	Yes
4	Garage	28'10" x 23'8"	619 sq. ft	No

2609 Valley Brook Circle Northeast, Northeast Huntsville, Huntsville, Madison County,



Room Dimensions

Floor 2

Total sqft: 1267

Living area: 1267

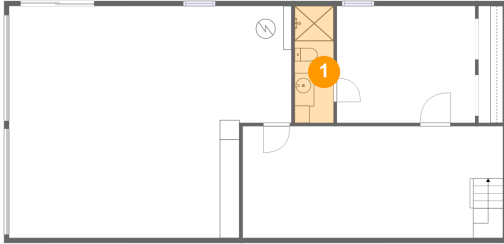
#	Room name	Dimensions	Area (sqft)	Counted as Living Area
5	Laundry	5'9" x 2'10"	17 sq. ft	Yes
6	Wc	4'1" x 4'7"	19 sq. ft	Yes
7	W.i.c.	6'7" x 5'11"	39 sq. ft	Yes
8	Kitchen	11'1" x 11'7"	128 sq. ft	Yes
9	Dining Area	15'0" x 11'7"	174 sq. ft	Yes
10	Living Room	21'7" x 11'9"	293 sq. ft	Yes
11	Bedroom	10'9" x 11'9"	115 sq. ft	Yes
12	Hall	13'9" x 3'5"	47 sq. ft	Yes
13	Bath	11'10" x 5'2"	61 sq. ft	Yes
14	Primary Bedroom	14'0" x 18'5"	180 sq. ft	Yes
15	Bath	7'5" x 7'10"	49 sq. ft	Yes

Scan captured on Mon, 09 Sep 2024 16:33:59 GMT

Information is calculated by CubiCasa technology; deemed highly reliable but not guaranteed.

2609 Valley Brook Circle Northeast, Northeast Huntsville, Huntsville, Madison County,

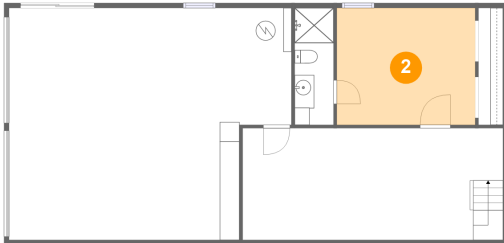
1 Floor 1 - Bath



Dimensions: 4'0" x 11'11"
Area: 47 sq. ft
Counted as Living Area:
Yes

Heated: Yes
Finished: Yes
Enclosed: Yes
Contiguous:
Yes
Permitted: Yes
Wet Space: Yes
Addition: No
Conversion: No

2 Floor 1 - Bedroom

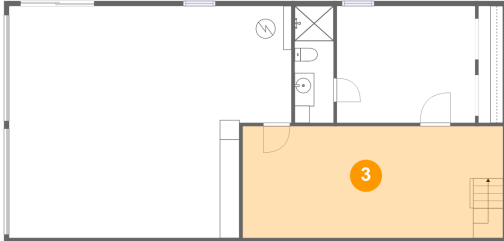


Dimensions: 14'1" x 11'11"
Area: 168 sq. ft
Counted as Living Area:
Yes

Heated: Yes
Finished: Yes
Enclosed: Yes
Contiguous:
Yes
Permitted: Yes
Wet Space: No
Addition: No
Conversion: No

2609 Valley Brook Circle Northeast, Northeast Huntsville, Huntsville, Madison County,

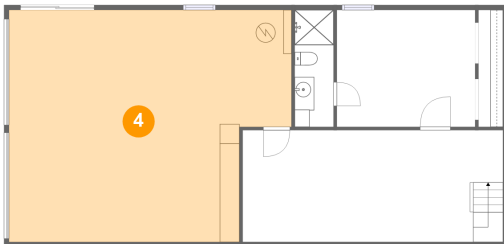
3 Floor 1 - Recreation Room



Dimensions: 26'7" x 11'5"
Area: 303 sq. ft
Counted as Living Area:
Yes

Heated: Yes
Finished: Yes
Enclosed: Yes
Contiguous:
Yes
Permitted: Yes
Wet Space: No
Addition: No
Conversion: No

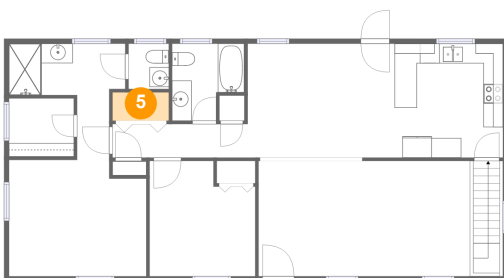
4 Floor 1 - Garage



Dimensions: 28'10" x 23'8"
Area: 619 sq. ft
Counted as Living Area: No

Heated: No
Finished: No
Enclosed: Yes
Contiguous: Yes
Permitted: Yes
Wet Space: No
Addition: No
Conversion: No

5 Floor 2 - Laundry

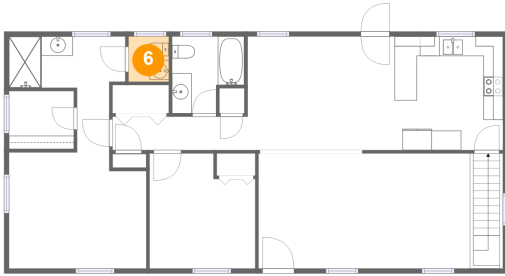


Dimensions: 5'9" x 2'10"
Area: 17 sq. ft
Counted as Living Area:
Yes

Heated: Yes
Finished: Yes
Enclosed: Yes
Contiguous:
Yes
Permitted: Yes
Wet Space: No
Addition: No
Conversion: No

2609 Valley Brook Circle Northeast, Northeast Huntsville, Huntsville, Madison County,

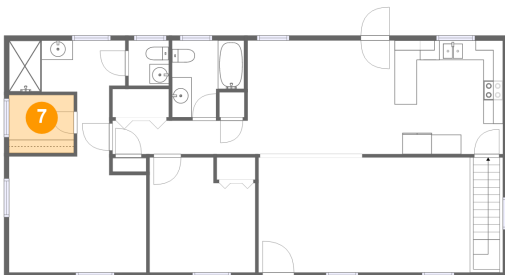
6 Floor 2 - Wc



Dimensions: 4'1" x 4'7"
Area: 19 sq. ft
Counted as Living Area:
Yes

Heated: Yes
Finished: Yes
Enclosed: Yes
Contiguous:
Yes
Permitted: Yes
Wet Space: Yes
Addition: No
Conversion: No

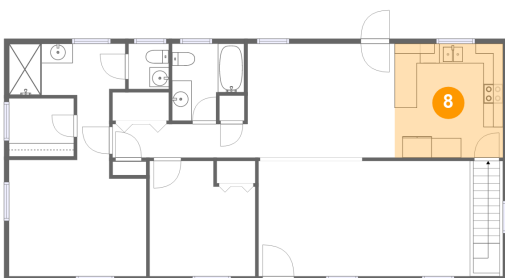
7 Floor 2 - W.i.c.



Dimensions: 6'7" x 5'11"
Area: 39 sq. ft
Counted as Living Area:
Yes

Heated: Yes
Finished: Yes
Enclosed: Yes
Contiguous:
Yes
Permitted: Yes
Wet Space: No
Addition: No
Conversion: No

8 Floor 2 - Kitchen

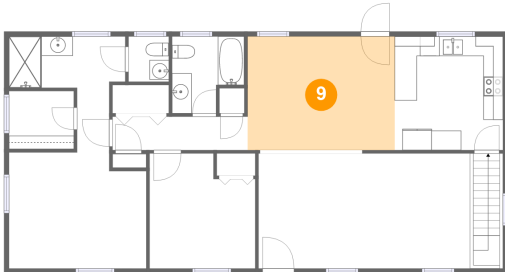


Dimensions: 11'1" x 11'7"
Area: 128 sq. ft
Counted as Living Area:
Yes

Heated: Yes
Finished: Yes
Enclosed: Yes
Contiguous:
Yes
Permitted: Yes
Wet Space: No
Addition: No
Conversion: No

2609 Valley Brook Circle Northeast, Northeast Huntsville, Huntsville, Madison County,

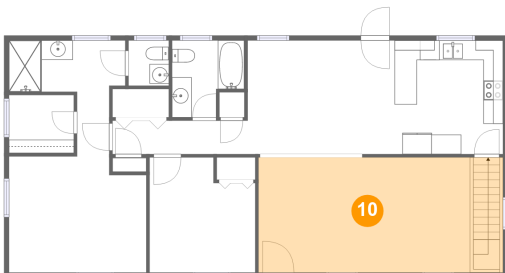
9 Floor 2 - Dining Area



Dimensions: 15'0" x 11'7"
Area: 174 sq. ft
Counted as Living Area:
Yes

Heated: Yes
Finished: Yes
Enclosed: Yes
Contiguous:
Yes
Permitted: Yes
Wet Space: No
Addition: No
Conversion: No

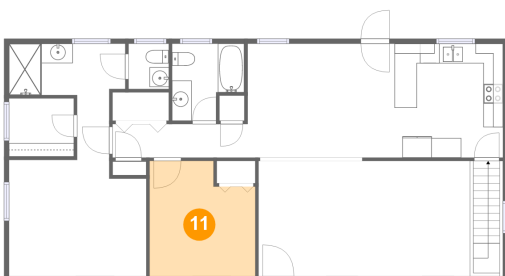
10 Floor 2 - Living Room



Dimensions: 21'7" x 11'9"
Area: 293 sq. ft
Counted as Living Area:
Yes

Heated: Yes
Finished: Yes
Enclosed: Yes
Contiguous:
Yes
Permitted: Yes
Wet Space: No
Addition: No
Conversion: No

11 Floor 2 - Bedroom

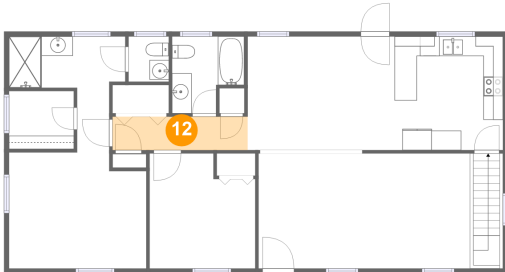


Dimensions: 10'9" x 11'9"
Area: 115 sq. ft
Counted as Living Area:
Yes

Heated: Yes
Finished: Yes
Enclosed: Yes
Contiguous:
Yes
Permitted: Yes
Wet Space: No
Addition: No
Conversion: No

2609 Valley Brook Circle Northeast, Northeast Huntsville, Huntsville, Madison County,

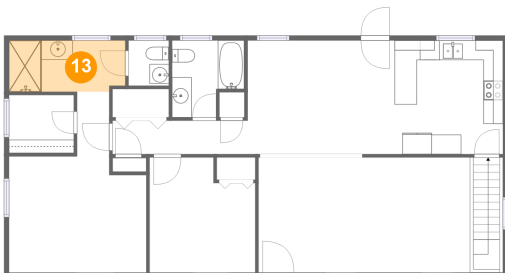
12 Floor 2 - Hall



Dimensions: 13'9" x 3'5"
Area: 47 sq. ft
Counted as Living Area:
Yes

Heated: Yes
Finished: Yes
Enclosed: Yes
Contiguous:
Yes
Permitted: Yes
Wet Space: No
Addition: No
Conversion: No

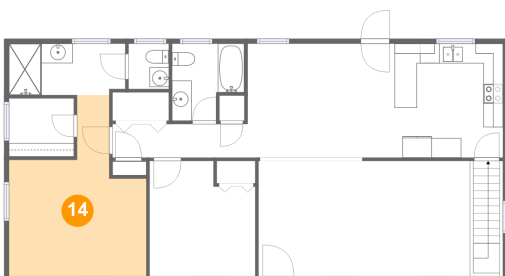
13 Floor 2 - Bath



Dimensions: 11'10" x 5'2"
Area: 61 sq. ft
Counted as Living Area:
Yes

Heated: Yes
Finished: Yes
Enclosed: Yes
Contiguous:
Yes
Permitted: Yes
Wet Space: Yes
Addition: No
Conversion: No

14 Floor 2 - Primary Bedroom

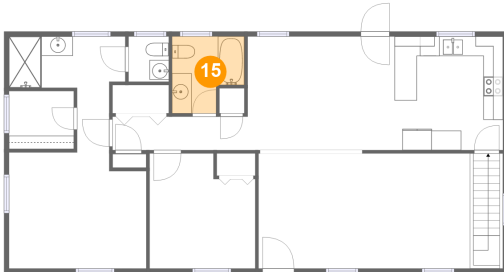


Dimensions: 14'0" x 18'5"
Area: 180 sq. ft
Counted as Living Area:
Yes

Heated: Yes
Finished: Yes
Enclosed: Yes
Contiguous:
Yes
Permitted: Yes
Wet Space: No
Addition: No
Conversion: No

2609 Valley Brook Circle Northeast, Northeast Huntsville, Huntsville, Madison County,

15 Floor 2 - Bath



Dimensions: 7'5" x 7'10"
Area: 49 sq. ft
Counted as Living Area:
Yes

Heated: Yes
Finished: Yes
Enclosed: Yes
Contiguous:
Yes
Permitted: Yes
Wet Space: Yes
Addition: No
Conversion: No