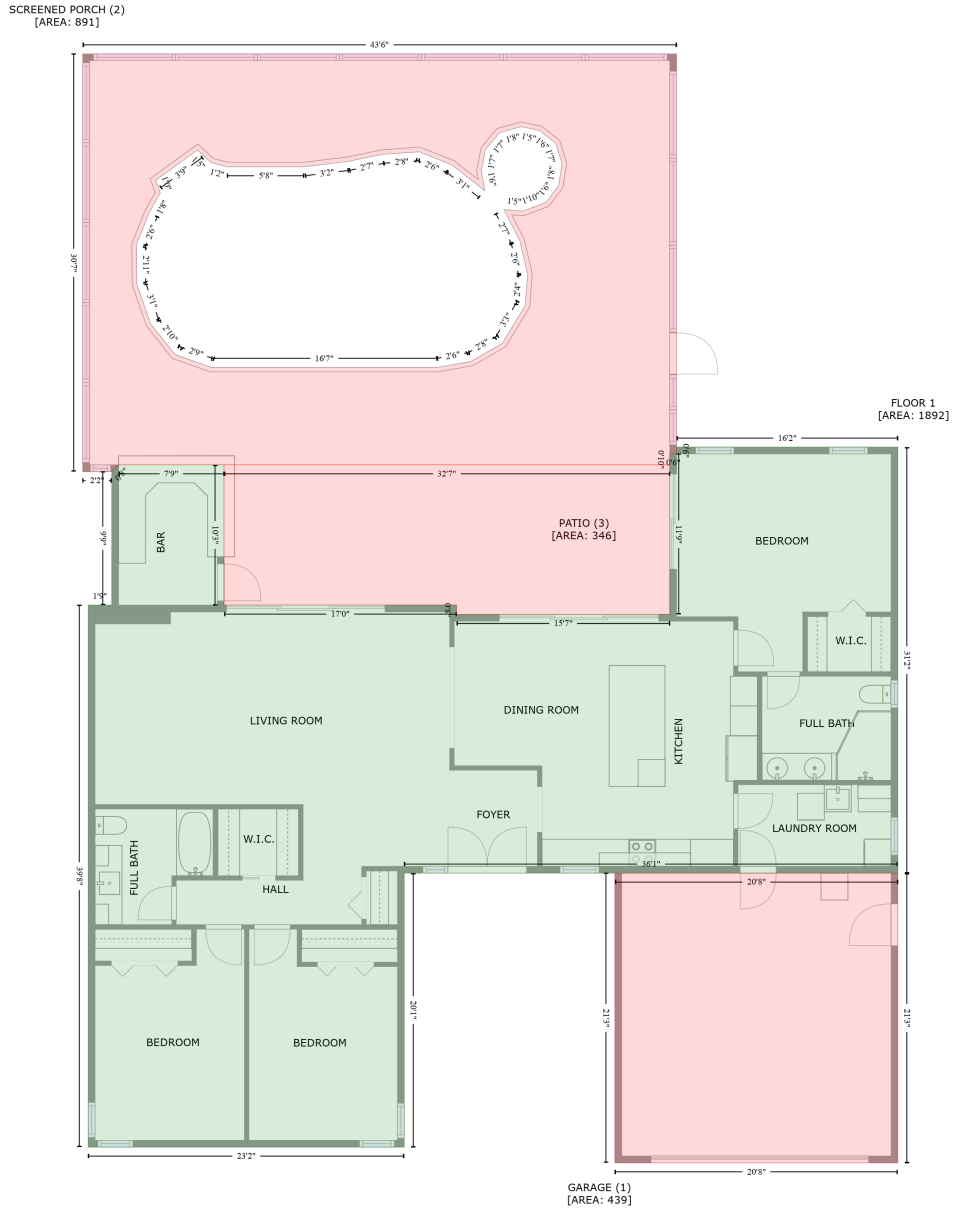


# 14405 Yacht Club Boulevard, Imperial Point, Seminole, Pinellas County, Florida, United States, 33776

Gross Living Area: 1892 sq. ft



Space	Area (sq. ft)	Calculation
FLOOR 1 (Living area)	1892	Coordinate Polygon Area Algorithm using inches $-((768.9 + 768.9) * (372.1 - 746.4) + (768.9 + 335.4) * (746.4 - 746.4) + (335.4 + 335.4) * (746.4 - 987.1) + (335.4 + 57.9) * (987.1 - 987.1) + (57.9 + 57.9) * (987.1 - 511) + (57.9 + 78.6) * (511 - 511) + (78.6 + 78.6) * (511 - 393.7) + (78.6 + 84.6) * (393.7 - 387.7) + (84.6 + 177.2) * (387.7 - 387.7) + (177.2 + 177.2) * (387.7 - 511) + (177.2 + 381.3) * (511 - 511) + (381.3 + 381.3) * (511 - 519.1) + (381.3 + 568.6) * (519.1 - 519.1) + (568.6 + 568.6) * (519.1 - 378.1) + (568.6 + 574.6) * (378.1 - 378.1) + (574.6 + 574.6) * (378.1 - 372.1) + (574.6 + 768.9) * (372.1 - 372.1)) * 0.5 * 0.00694$

# 14405 Yacht Club Boulevard, Imperial Point, Seminole, Pinellas County, Florida, United States, 33776

Gross Living Area: 1892 sq. ft

Space	Area (sq. ft)	Calculation <small>Coordinate Polygon Area Algorithm using inches</small>
GARAGE (Non-living area)	439	$-\left((768.9 + 768.9) * (746.4 - 1001) + (768.9 + 520.4) * (1001 - 1001) + (520.4 + 520.4) * (1001 - 746.4) + (520.4 + 768.9) * (746.4 - 746.4)\right) * 0.5 * 0.00694$
SCREENED PORCH (Non-living area)	891	$-\left((574.6 + 574.6) * (26.7 - 378.1) + (574.6 + 568.6) * (378.1 - 378.1) + (568.6 + 568.6) * (378.1 - 387.7) + (568.6 + 84.6) * (387.7 - 387.7) + (84.6 + 78.6) * (387.7 - 393.7) + (78.6 + 53.1) * (393.7 - 393.7) + (53.1 + 53.1) * (393.7 - 26.7) + (53.1 + 574.6) * (26.7 - 26.7)\right) * 0.5 * 0.00694 + \left((438.1 + 419.2) * (90.7 - 95.8) + (419.2 + 406.7) * (95.8 - 110.7) + (406.7 + 403.1) * (110.7 - 129.3) + (403.1 + 406.2) * (129.3 - 147) + (406.2 + 376.9) * (147 - 123.9) + (376.9 + 348.7) * (123.9 - 112.7) + (348.7 + 316.7) * (112.7 - 114.9) + (316.7 + 285.8) * (114.9 - 121.3) + (285.8 + 247.7) * (121.3 - 125.9) + (247.7 + 180) * (125.9 - 125.9) + (180 + 166) * (125.9 - 122.3) + (166 + 153.8) * (122.3 - 111.1) + (153.8 + 117.1) * (111.1 - 137.8) + (117.1 + 121.2) * (137.8 - 148.6) + (121.2 + 111.4) * (148.6 - 166.3) + (111.4 + 100.2) * (166.3 - 194.1) + (100.2 + 100.4) * (194.1 - 194.1) + (100.4 + 100.5) * (194.1 - 229.3) + (100.5 + 112.8) * (229.3 - 263.9) + (112.8 + 134.2) * (263.9 - 290.9) + (134.2 + 165.8) * (290.9 - 302.1) + (165.8 + 364.8) * (302.1 - 302.1) + (364.8 + 394) * (302.1 - 296.9) + (394 + 421.5) * (296.9 - 281) + (421.5 + 441.6) * (281 - 247.9) + (441.6 + 443.8) * (247.9 - 220.2) + (443.8 + 436.9) * (220.2 - 190.8) + (436.9 + 422.9) * (190.8 - 163.5) + (422.9 + 439.5) * (163.5 - 164.8) + (439.5 + 459.8) * (164.8 - 157.2) + (459.8 + 470.9) * (157.2 - 142.5) + (470.9 + 474) * (142.5 - 123.2) + (474 + 468.4) * (123.2 - 105.1) + (468.4 + 454.5) * (105.1 - 94.1) + (454.5 + 438.1) * (94.1 - 90.7)\right) * 0.5 * 0.00694$
PATIO (Non-living area)	346	$-\left((568.6 + 568.6) * (387.7 - 519.1) + (568.6 + 381.3) * (519.1 - 519.1) + (381.3 + 381.3) * (519.1 - 511) + (381.3 + 177.2) * (511 - 511) + (177.2 + 177.2) * (511 - 387.7) + (177.2 + 568.6) * (387.7 - 387.7)\right) * 0.5 * 0.00694$