


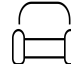
3001 Lorraine Road Northwest, Roanoke, Virginia, United States



Property summary

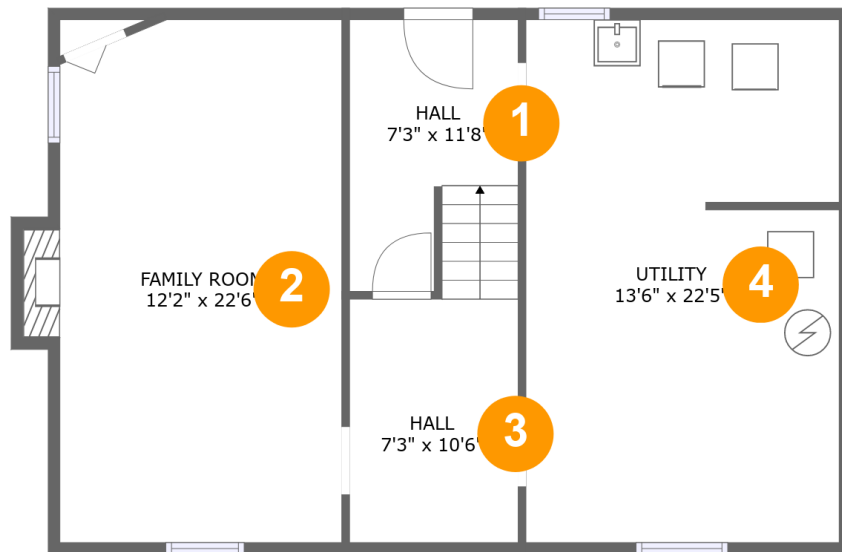
 **0** Garages  **3** Bedrooms  **2** Bathrooms  **1** Half baths

 **3** Floors

 **2,389** Gross living area sqft

 **3,459** Total sqft

3001 Lorraine Road
Northwest, Roanoke, Virginia, United States



Room dimensions

Floor 1

Total sqft: 819 Living area: 476

#		Dimensions	sqft	Counted as living area
1	Hall	7'3" x 11'8"	84 sq. ft	Yes
2	Family Room	12'2" x 22'6"	276 sq. ft	Yes
3	Hall	7'3" x 10'6"	76 sq. ft	Yes
4	Utility	13'6" x 22'5"	301 sq. ft	No

3001 Lorraine Road Northwest, Roanoke, Virginia, United States



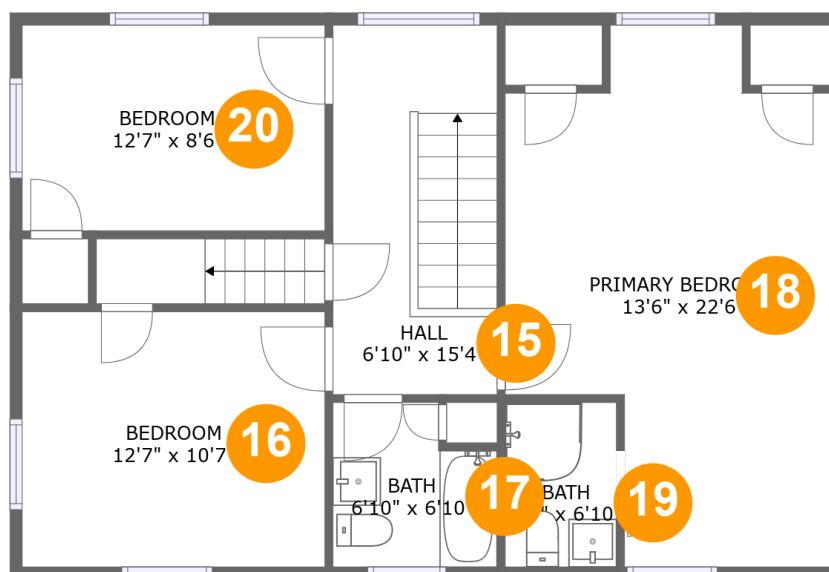
Room dimensions

Floor 2

Total sqft: 1830 Living area: 1103

#		Dimensions	sqft	Counted as living area
5	WC	4'2" x 4'1"	17 sq. ft	Yes
6	Foyer	7'0" x 10'11"	101 sq. ft	Yes
7	Living Room	13'5" x 22'6"	314 sq. ft	Yes
8	Hall	7'0" x 11'7"	53 sq. ft	Yes
9	Patio	26'8" x 32'5"	599 sq. ft	No
10	Office	8'9" x 13'2"	115 sq. ft	Yes
11	Kitchen	13'4" x 18'4"	219 sq. ft	Yes
12	Covered Porch	8'5" x 14'8"	112 sq. ft	No
13	Dining Room	13'4" x 12'2"	162 sq. ft	Yes
14	Pantry	4'3" x 3'7"	15 sq. ft	Yes

3001 Lorraine Road Northwest, Roanoke, Virginia, United States



Room dimensions

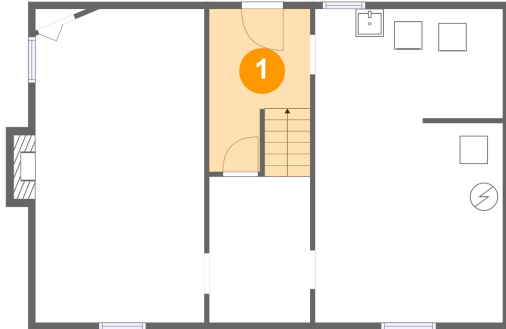
Floor 3

Total sqft: 810 Living area: 810

#		Dimensions	sqft	Counted as living area
15	Hall	6'10" x 15'4"	104 sq. ft	Yes
16	Bedroom	12'7" x 10'7"	133 sq. ft	Yes
17	Bath	6'10" x 6'10"	42 sq. ft	Yes
18	Primary Bedroom	13'6" x 22'6"	245 sq. ft	Yes
19	Bath	4'7" x 6'10"	31 sq. ft	Yes
20	Bedroom	12'7" x 8'6"	107 sq. ft	Yes

3001 Lorraine Road
Northwest, Roanoke, Virginia, United States

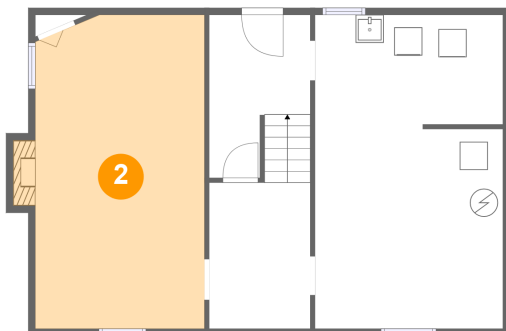
1 Floor 1 - Hall



Dimensions: 7'3" x 11'8"
Area: 84 sq. ft
Counted as living area: Yes

Heated: Yes
Finished: Yes
Enclosed: Yes
Contiguous: Yes
Permitted: Yes
Wet space: No
Addition: No
Conversion: No

2 Floor 1 - Family Room

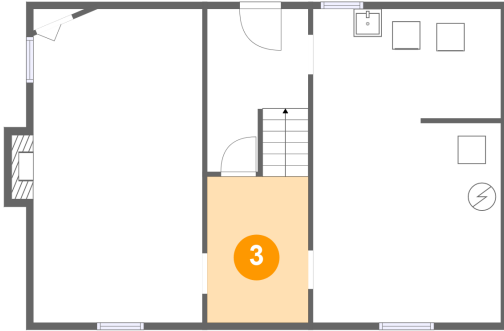


Dimensions: 12'2" x 22'6"
Area: 276 sq. ft
Counted as living area: Yes

Heated: Yes
Finished: Yes
Enclosed: Yes
Contiguous: Yes
Permitted: Yes
Wet space: No
Addition: No
Conversion: No

3001 Lorraine Road
Northwest, Roanoke, Virginia, United States

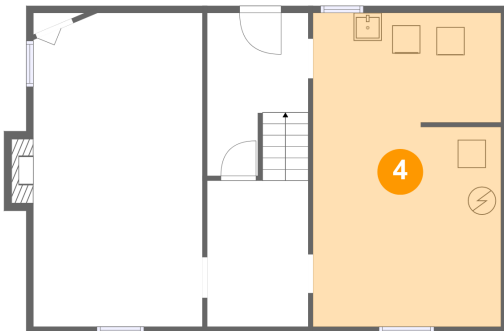
3 Floor 1 - Hall



Dimensions: 7'3" x 10'6"
Area: 76 sq. ft
Counted as living area: Yes

Heated: Yes
Finished: Yes
Enclosed: Yes
Contiguous: Yes
Permitted: Yes
Wet space: No
Addition: No
Conversion: No

4 Floor 1 - Utility



Dimensions: 13'6" x 22'5"
Area: 301 sq. ft
Counted as living area: No

Heated: Yes
Finished: No
Enclosed: Yes
Contiguous: Yes
Permitted: Yes
Wet space: No
Addition: No
Conversion: No

5 Floor 2 - WC



Dimensions: 4'2" x 4'1"
Area: 17 sq. ft
Counted as living area: Yes

Heated: Yes
Finished: Yes
Enclosed: Yes
Contiguous: Yes
Permitted: Yes
Wet space: Yes
Addition: No
Conversion: No

3001 Lorraine Road Northwest, Roanoke, Virginia, United States

6 Floor 2 - Foyer



Dimensions: 7'0" x 10'11"
Area: 101 sq. ft
Counted as living area: Yes

Heated: Yes
Finished: Yes
Enclosed: Yes
Contiguous: Yes
Permitted: Yes
Wet space: No
Addition: No
Conversion: No

7 Floor 2 - Living Room



Dimensions: 13'5" x 22'6"
Area: 314 sq. ft
Counted as living area: Yes

Heated: Yes
Finished: Yes
Enclosed: Yes
Contiguous: Yes
Permitted: Yes
Wet space: No
Addition: No
Conversion: No

8 Floor 2 - Hall

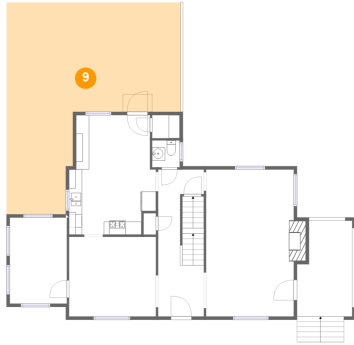


Dimensions: 7'0" x 11'7"
Area: 53 sq. ft
Counted as living area: Yes

Heated: Yes
Finished: Yes
Enclosed: Yes
Contiguous: Yes
Permitted: Yes
Wet space: No
Addition: No
Conversion: No

3001 Lorraine Road Northwest, Roanoke, Virginia, United States

9 Floor 2 - Patio



Dimensions: 26'8" x 32'5"
Area: 599 sq. ft
Counted as living area: No

Heated: No
Finished: Yes
Enclosed: No
Contiguous: Yes
Permitted: Yes
Wet space: No
Addition: No
Conversion: No

10 Floor 2 - Office



Dimensions: 8'9" x 13'2"
Area: 115 sq. ft
Counted as living area: Yes

Heated: Yes
Finished: Yes
Enclosed: Yes
Contiguous: Yes
Permitted: Yes
Wet space: No
Addition: No
Conversion: No

11 Floor 2 - Kitchen



Dimensions: 13'4" x 18'4"
Area: 219 sq. ft
Counted as living area: Yes

Heated: Yes
Finished: Yes
Enclosed: Yes
Contiguous: Yes
Permitted: Yes
Wet space: No
Addition: No
Conversion: No

3001 Lorraine Road Northwest, Roanoke, Virginia, United States

12 Floor 2 - Covered Porch



Dimensions: 8'5" x 14'8"
Area: 112 sq. ft
Counted as living area: No

Heated: No
Finished: Yes
Enclosed: No
Contiguous: Yes
Permitted: Yes
Wet space: No
Addition: No
Conversion: No

13 Floor 2 - Dining Room



Dimensions: 13'4" x 12'2"
Area: 162 sq. ft
Counted as living area: Yes

Heated: Yes
Finished: Yes
Enclosed: Yes
Contiguous: Yes
Permitted: Yes
Wet space: No
Addition: No
Conversion: No

14 Floor 2 - Pantry

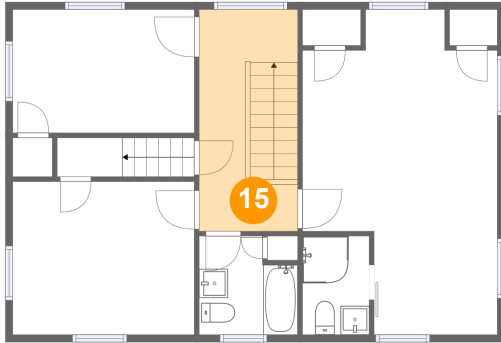


Dimensions: 4'3" x 3'7"
Area: 15 sq. ft
Counted as living area: Yes

Heated: Yes
Finished: Yes
Enclosed: Yes
Contiguous: Yes
Permitted: Yes
Wet space: No
Addition: No
Conversion: No

3001 Lorraine Road
Northwest, Roanoke, Virginia, United States

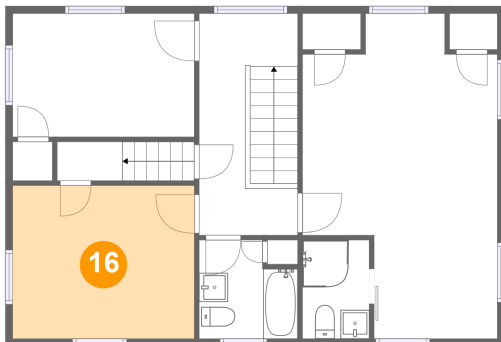
15 Floor 3 - Hall



Dimensions: 6'10" x 15'4"
Area: 104 sq. ft
Counted as living area: Yes

Heated: Yes
Finished: Yes
Enclosed: Yes
Contiguous: Yes
Permitted: Yes
Wet space: No
Addition: No
Conversion: No

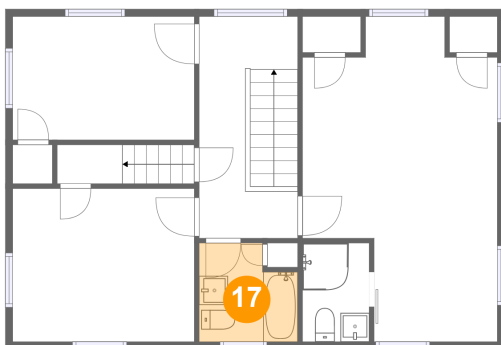
16 Floor 3 - Bedroom



Dimensions: 12'7" x 10'7"
Area: 133 sq. ft
Counted as living area: Yes

Heated: Yes
Finished: Yes
Enclosed: Yes
Contiguous: Yes
Permitted: Yes
Wet space: No
Addition: No
Conversion: No

17 Floor 3 - Bath

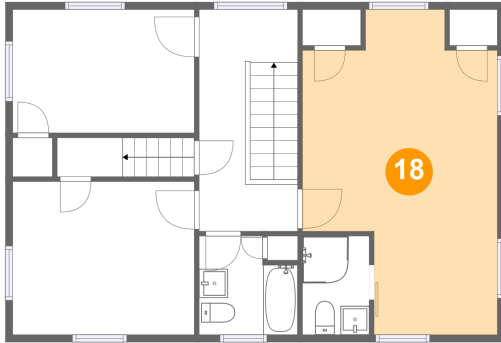


Dimensions: 6'10" x 6'10"
Area: 42 sq. ft
Counted as living area: Yes

Heated: Yes
Finished: Yes
Enclosed: Yes
Contiguous: Yes
Permitted: Yes
Wet space: Yes
Addition: No
Conversion: No

3001 Lorraine Road
Northwest, Roanoke, Virginia, United States

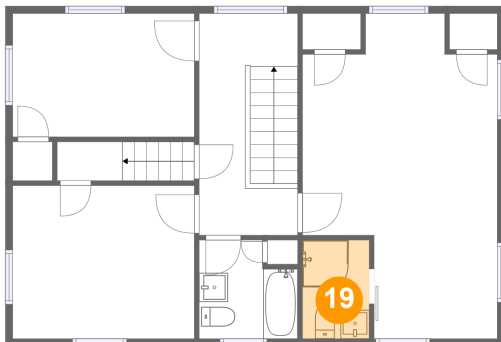
18 Floor 3 - Primary Bedroom



Dimensions: 13'6" x 22'6"
Area: 245 sq. ft
Counted as living area: Yes

Heated: Yes
Finished: Yes
Enclosed: Yes
Contiguous: Yes
Permitted: Yes
Wet space: No
Addition: No
Conversion: No

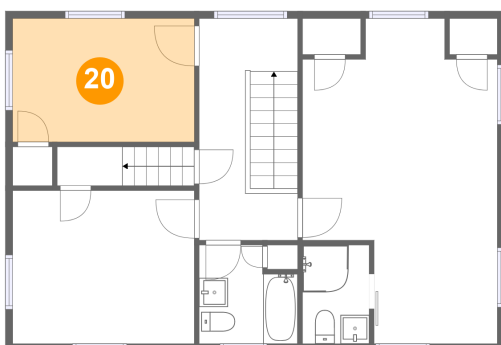
19 Floor 3 - Bath



Dimensions: 4'7" x 6'10"
Area: 31 sq. ft
Counted as living area: Yes

Heated: Yes
Finished: Yes
Enclosed: Yes
Contiguous: Yes
Permitted: Yes
Wet space: Yes
Addition: No
Conversion: No

20 Floor 3 - Bedroom



Dimensions: 12'7" x 8'6"
Area: 107 sq. ft
Counted as living area: Yes

Heated: Yes
Finished: Yes
Enclosed: Yes
Contiguous: Yes
Permitted: Yes
Wet space: No
Addition: No
Conversion: No