


Home report


151 South Laurel Avenue, North Berkeley, Berkeley Springs,
Morgan County, West Virginia, United States, 25411




Property summary




0
Garages



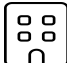
3
Bedrooms




2
Bathrooms




0
Half baths



3
Floors



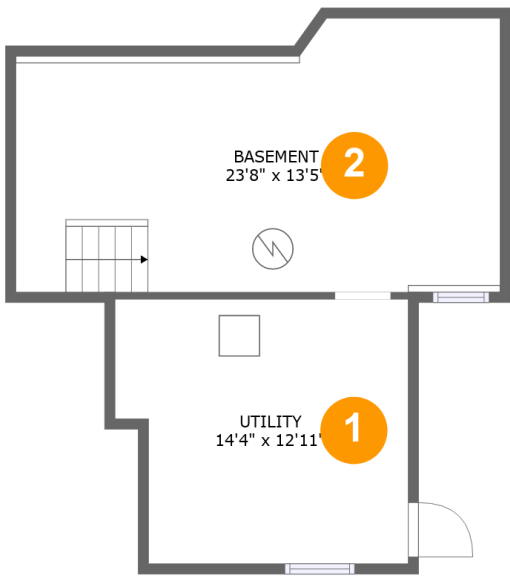
1,153
Gross living
area sqft



2,390
Total sqft

Home report

151 South Laurel Avenue, North Berkeley, Berkeley Springs,
Morgan County, West Virginia, United States, 25411



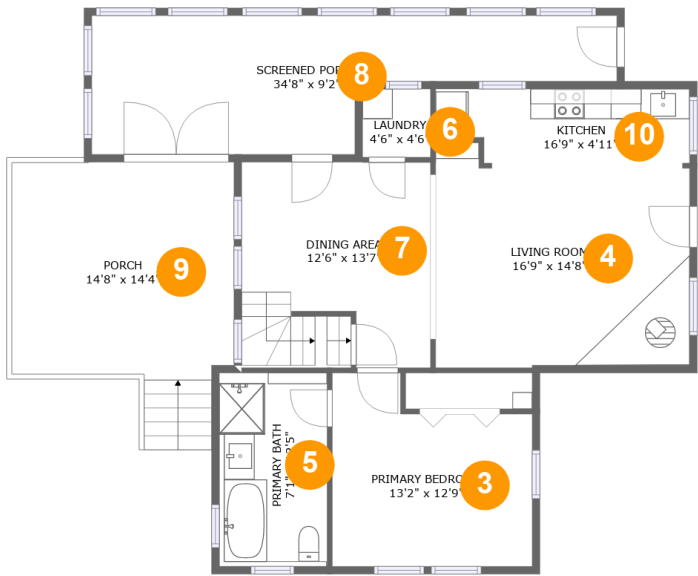
Room dimensions

Floor 1 Total sqft: 519 Living area: 0

#		Dimensions	sqft	Counted as living area
1	Utility	14'4" x 12'11"	174 sq. ft	No
2	Basement	23'8" x 13'5"	290 sq. ft	No

Home report

151 South Laurel Avenue, North Berkeley, Berkeley Springs,
Morgan County, West Virginia, United States, 25411



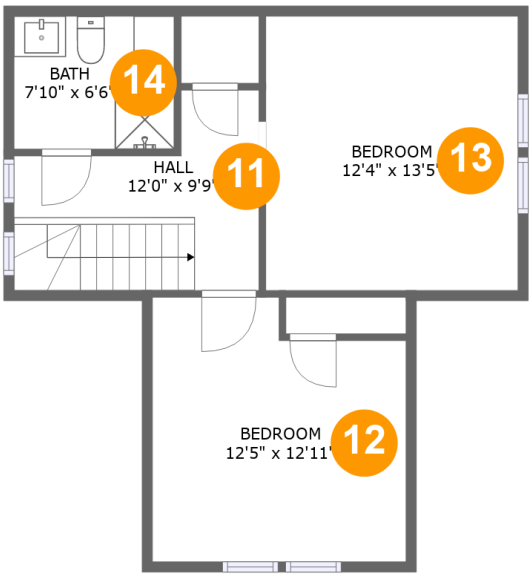
Room dimensions

Floor 2 Total sqft: 1325 Living area: 836

#		Dimensions	sqft	Counted as living area
3	Primary Bedroom	13'2" x 12'9"	145 sq. ft	Yes
4	Living Room	16'9" x 14'8"	228 sq. ft	Yes
5	Primary Bath	7'1" x 12'5"	91 sq. ft	Yes
6	Laundry	4'6" x 4'6"	20 sq. ft	Yes
7	Dining Area	12'6" x 13'7"	166 sq. ft	Yes
8	Screened Porch	34'8" x 9'2"	234 sq. ft	No
9	Porch	14'8" x 14'4"	226 sq. ft	No
10	Kitchen	16'9" x 4'11"	77 sq. ft	Yes

Home report

151 South Laurel Avenue, North Berkeley, Berkeley Springs,
Morgan County, West Virginia, United States, 25411



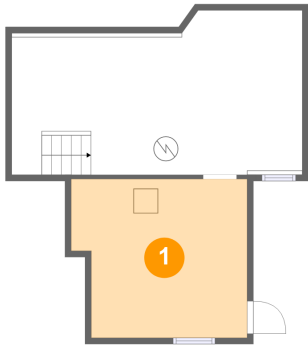
Room dimensions

Floor 3 Total sqft: 546 Living area: 317

#		Dimensions	sqft	Counted as living area
11	Hall	12'0" x 9'9"	91 sq. ft	No
12	Bedroom	12'5" x 12'11"	106 sq. ft	Yes
13	Bedroom	12'4" x 13'5"	117 sq. ft	Yes
14	Bath	7'10" x 6'6"	50 sq. ft	Yes

151 South Laurel Avenue, North Berkeley, Berkeley Springs,
Morgan County, West Virginia, United States, 25411

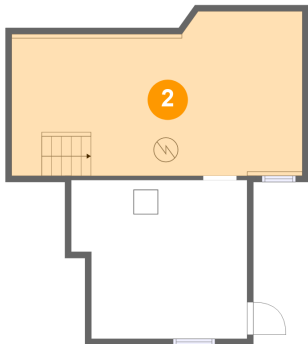
1 Floor 1 - Utility



Dimensions: 14'4" x 12'11"
Area: 174 sq. ft
Counted as living area: No

Heated: Yes
Finished: No
Enclosed: Yes
Contiguous: Yes
Permitted: Yes
Wet space: No
Addition: No
Conversion: No

2 Floor 1 - Basement

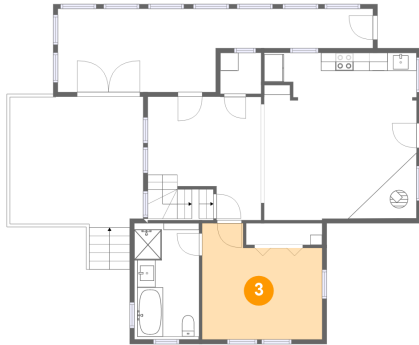


Dimensions: 23'8" x 13'5"
Area: 290 sq. ft
Counted as living area: No

Heated: Yes
Finished: No
Enclosed: Yes
Contiguous: Yes
Permitted: Yes
Wet space: No
Addition: No
Conversion: No

151 South Laurel Avenue, North Berkeley, Berkeley Springs,
Morgan County, West Virginia, United States, 25411

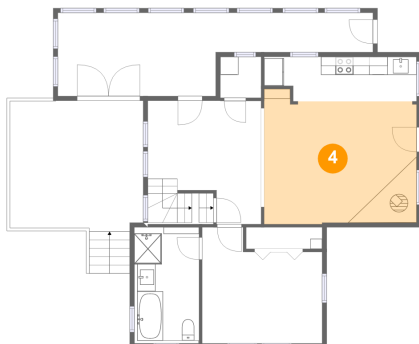
3 Floor 2 - Primary Bedroom



Dimensions: 13'2" x 12'9"
Area: 145 sq. ft
Counted as living area: Yes

Heated: Yes
Finished: Yes
Enclosed: Yes
Contiguous: Yes
Permitted: Yes
Wet space: No
Addition: No
Conversion: No

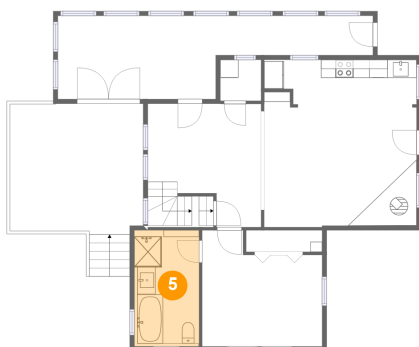
4 Floor 2 - Living Room



Dimensions: 16'9" x 14'8"
Area: 228 sq. ft
Counted as living area: Yes

Heated: Yes
Finished: Yes
Enclosed: Yes
Contiguous: Yes
Permitted: Yes
Wet space: No
Addition: No
Conversion: No

5 Floor 2 - Primary Bath



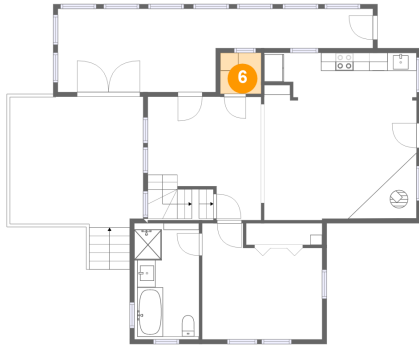
Dimensions: 7'1" x 12'5"
Area: 91 sq. ft
Counted as living area: Yes

Heated: Yes
Finished: Yes
Enclosed: Yes
Contiguous: Yes
Permitted: Yes
Wet space: Yes
Addition: No
Conversion: No

Home report

151 South Laurel Avenue, North Berkeley, Berkeley Springs,
Morgan County, West Virginia, United States, 25411

6 Floor 2 - Laundry



Dimensions: 4'6" x 4'6"
Area: 20 sq. ft
Counted as living area: Yes

Heated: Yes
Finished: Yes
Enclosed: Yes
Contiguous: Yes
Permitted: Yes
Wet space: No
Addition: No
Conversion: No

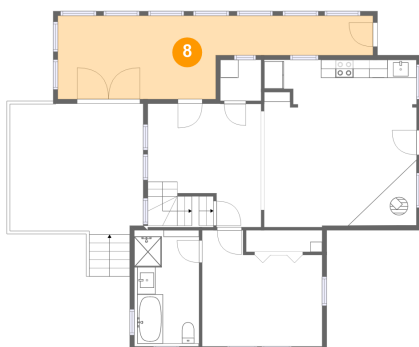
7 Floor 2 - Dining Area



Dimensions: 12'6" x 13'7"
Area: 166 sq. ft
Counted as living area: Yes

Heated: Yes
Finished: Yes
Enclosed: Yes
Contiguous: Yes
Permitted: Yes
Wet space: No
Addition: No
Conversion: No

8 Floor 2 - Screened Porch



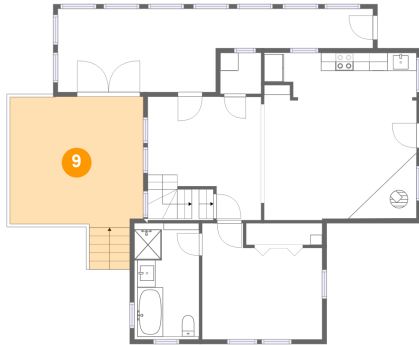
Dimensions: 34'8" x 9'2"
Area: 234 sq. ft
Counted as living area: No

Heated: No
Finished: Yes
Enclosed: No
Contiguous: Yes
Permitted: Yes
Wet space: No
Addition: No
Conversion: No

Home report

151 South Laurel Avenue, North Berkeley, Berkeley Springs,
Morgan County, West Virginia, United States, 25411

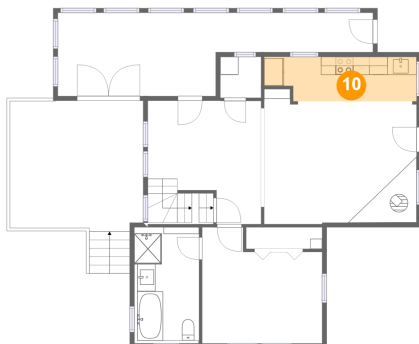
9 Floor 2 - Porch



Dimensions: 14'8" x 14'4"
Area: 226 sq. ft
Counted as living area: No

Heated: No
Finished: Yes
Enclosed: No
Contiguous: Yes
Permitted: Yes
Wet space: No
Addition: No
Conversion: No

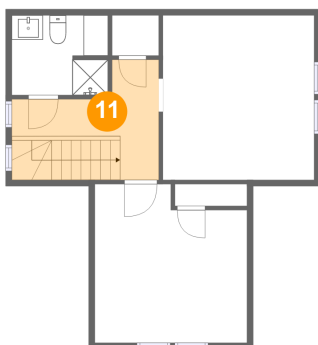
10 Floor 2 - Kitchen



Dimensions: 16'9" x 4'11"
Area: 77 sq. ft
Counted as living area: Yes

Heated: Yes
Finished: Yes
Enclosed: Yes
Contiguous: Yes
Permitted: Yes
Wet space: No
Addition: No
Conversion: No

11 Floor 3 - Hall

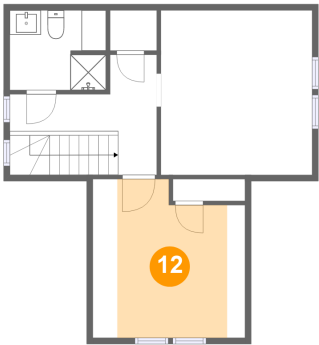


Dimensions: 12'0" x 9'9"
Area: 91 sq. ft
Counted as living area: No

Heated: Yes
Finished: Yes
Enclosed: Yes
Contiguous: Yes
Permitted: Yes
Wet space: No
Addition: No
Conversion: No

151 South Laurel Avenue, North Berkeley, Berkeley Springs,
Morgan County, West Virginia, United States, 25411

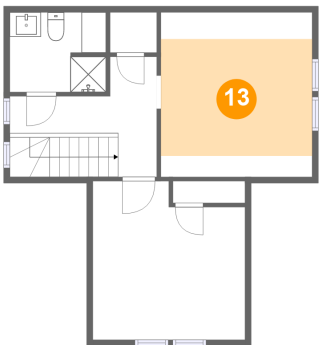
12 Floor 3 - Bedroom



Dimensions: 12'5" x 12'11"
Area: 106 sq. ft
Counted as living area: Yes

Heated: Yes
Finished: Yes
Enclosed: Yes
Contiguous: Yes
Permitted: Yes
Wet space: No
Addition: No
Conversion: No

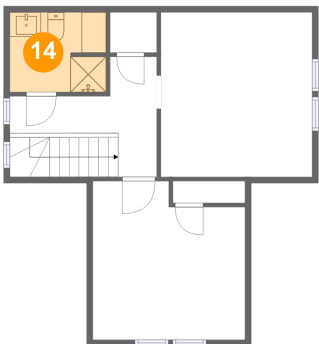
13 Floor 3 - Bedroom



Dimensions: 12'4" x 13'5"
Area: 117 sq. ft
Counted as living area: Yes

Heated: Yes
Finished: Yes
Enclosed: Yes
Contiguous: Yes
Permitted: Yes
Wet space: No
Addition: No
Conversion: No

14 Floor 3 - Bath



Dimensions: 7'10" x 6'6"
Area: 50 sq. ft
Counted as living area: Yes

Heated: Yes
Finished: Yes
Enclosed: Yes
Contiguous: Yes
Permitted: Yes
Wet space: Yes
Addition: No
Conversion: No