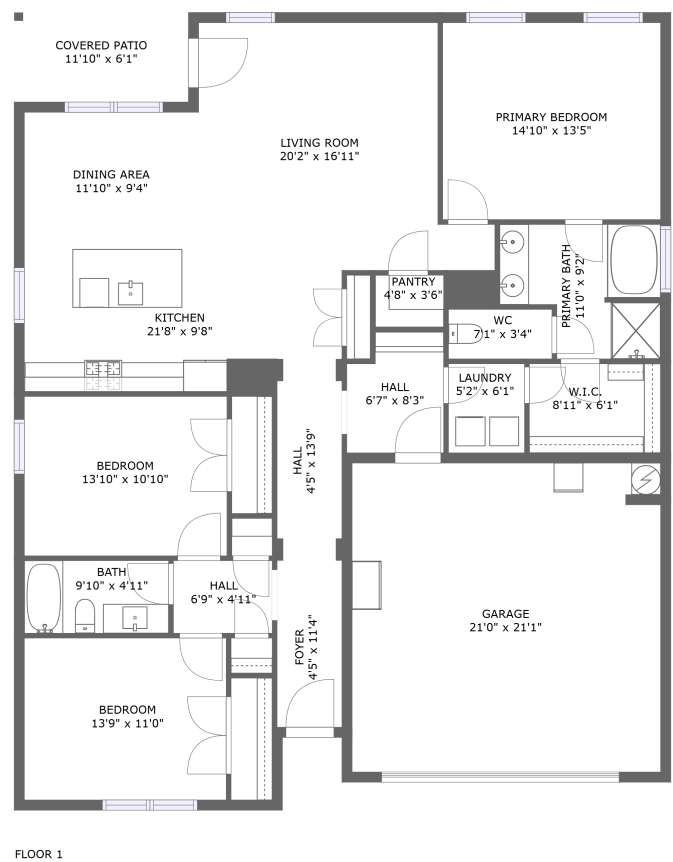


Home report

124 Sublett Drive, Hazel Green, Madison County, Alabama,  
United States, 35750



**Total Area: 1823 sq. ft**

Floor 1: 1823 sq. ft

Excluded: Garage 474 sq. ft, Outdoor Patio Covered 72 sq. ft

Property summary

 **1** Floors

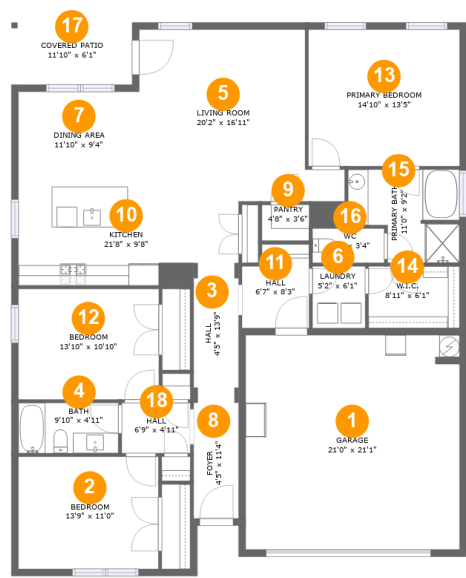
 **3** Bedrooms

 **2** Bathrooms

 **1** Garages

Home report

124 Sublett Drive, Hazel Green, Madison County, Alabama,  
United States, 35750



Room dimensions

Floor 1 Total:1823sqft Excluded: 546sqft

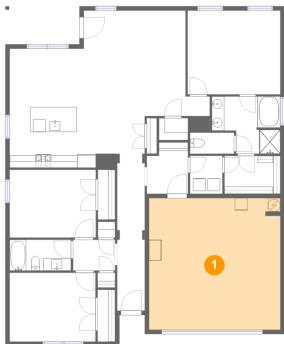
#		Max Dimensions	sqft	Included
1	Garage	21'0" x 21'1"	441 sq. ft	No
2	Bedroom	13'9" x 11'0"	152 sq. ft	Yes
3	Hall	4'5" x 13'9"	61 sq. ft	Yes
4	Bath	9'10" x 4'11"	49 sq. ft	Yes
5	Living Room	20'2" x 16'11"	287 sq. ft	Yes
6	Laundry	5'2" x 6'1"	31 sq. ft	Yes
7	Dining Area	11'10" x 9'4"	111 sq. ft	Yes
8	Foyer	4'5" x 11'4"	50 sq. ft	Yes
9	Pantry	4'8" x 3'6"	16 sq. ft	Yes
10	Kitchen	21'8" x 9'8"	178 sq. ft	Yes
11	Hall	6'7" x 8'3"	50 sq. ft	Yes

## Home report

**124 Sublett Drive, Hazel Green, Madison County, Alabama,  
United States, 35750**

#		Max Dimensions	sqft	Included
12	Bedroom	13'10" x 10'10"	150 sq. ft	Yes
13	Primary Bedroom	14'10" x 13'5"	199 sq. ft	Yes
14	W.I.C.	8'11" x 6'1"	54 sq. ft	Yes
15	Primary Bath	11'0" x 9'2"	85 sq. ft	Yes
16	WC	7'1" x 3'4"	24 sq. ft	Yes
17	Covered Patio	11'10" x 6'1"	72 sq. ft	No
18	Hall	6'9" x 4'11"	33 sq. ft	Yes

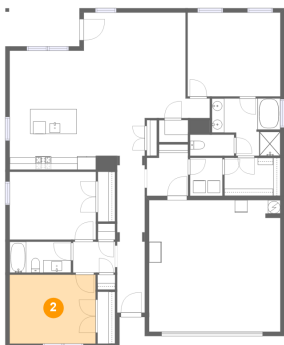
1 Floor 1 - Garage



Max Dimensions: 21'0" x 21'1"  
Calculated Area: 441 sq. ft  
Included: No

Heated: No  
Finished: No  
Enclosed: Yes  
Contiguous: Yes  
Permitted: Yes  
Wet space: No  
Addition: No  
Conversion: No

2 Floor 1 - Bedroom



Max Dimensions: 13'9" x 11'0"  
Calculated Area: 152 sq. ft  
Included: Yes

Heated: Yes  
Finished: Yes  
Enclosed: Yes  
Contiguous: Yes  
Permitted: Yes  
Wet space: No  
Addition: No  
Conversion: No

Home report

124 Sublett Drive, Hazel Green, Madison County, Alabama,  
United States, 35750

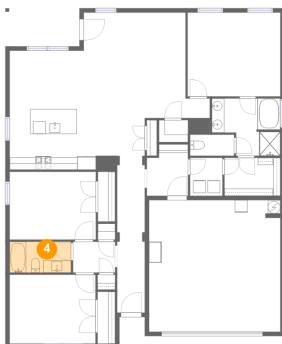
**3** Floor 1 - Hall



Max Dimensions: 4'5" x 13'9"  
Calculated Area: 61 sq. ft  
Included: Yes

Heated: Yes  
Finished: Yes  
Enclosed: Yes  
Contiguous: Yes  
Permitted: Yes  
Wet space: No  
Addition: No  
Conversion: No

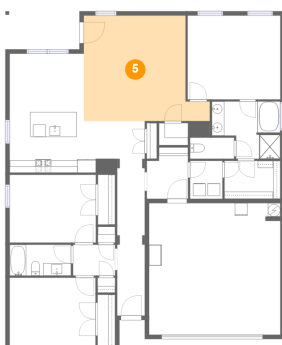
**4** Floor 1 - Bath



Max Dimensions: 9'10" x 4'11"  
Calculated Area: 49 sq. ft  
Included: Yes

Heated: Yes  
Finished: Yes  
Enclosed: Yes  
Contiguous: Yes  
Permitted: Yes  
Wet space: Yes  
Addition: No  
Conversion: No

**5** Floor 1 - Living Room



Max Dimensions: 20'2" x 16'11"  
Calculated Area: 287 sq. ft  
Included: Yes

Heated: Yes  
Finished: Yes  
Enclosed: Yes  
Contiguous: Yes  
Permitted: Yes  
Wet space: No  
Addition: No  
Conversion: No

124 Sublett Drive, Hazel Green, Madison County, Alabama,  
United States, 35750

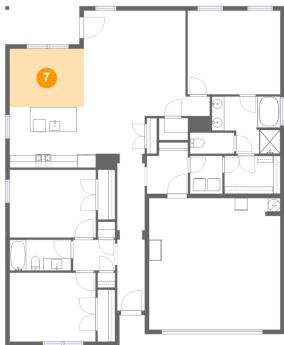
## 6 Floor 1 - Laundry



Max Dimensions: 5'2" x 6'1"  
Calculated Area: 31 sq. ft  
Included: Yes

Heated: Yes  
Finished: Yes  
Enclosed: Yes  
Contiguous: Yes  
Permitted: Yes  
Wet space: No  
Addition: No  
Conversion: No

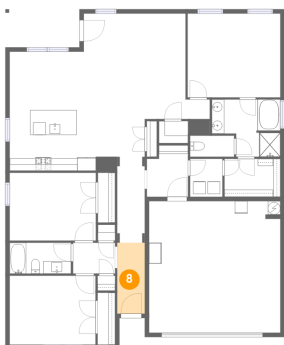
## 7 Floor 1 - Dining Area



Max Dimensions: 11'10" x 9'4"  
Calculated Area: 111 sq. ft  
Included: Yes

Heated: Yes  
Finished: Yes  
Enclosed: Yes  
Contiguous: Yes  
Permitted: Yes  
Wet space: No  
Addition: No  
Conversion: No

## 8 Floor 1 - Foyer



Max Dimensions: 4'5" x 11'4"  
Calculated Area: 50 sq. ft  
Included: Yes

Heated: Yes  
Finished: Yes  
Enclosed: Yes  
Contiguous: Yes  
Permitted: Yes  
Wet space: No  
Addition: No  
Conversion: No

124 Sublett Drive, Hazel Green, Madison County, Alabama,  
United States, 35750

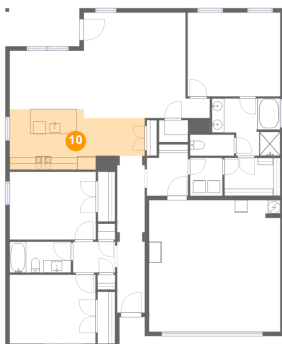
## 9 Floor 1 - Pantry



Max Dimensions: 4'8" x 3'6"  
Calculated Area: 16 sq. ft  
Included: Yes

Heated: Yes  
Finished: Yes  
Enclosed: Yes  
Contiguous: Yes  
Permitted: Yes  
Wet space: No  
Addition: No  
Conversion: No

## 10 Floor 1 - Kitchen



Max Dimensions: 21'8" x 9'8"  
Calculated Area: 178 sq. ft  
Included: Yes

Heated: Yes  
Finished: Yes  
Enclosed: Yes  
Contiguous: Yes  
Permitted: Yes  
Wet space: No  
Addition: No  
Conversion: No

## 11 Floor 1 - Hall



Max Dimensions: 6'7" x 8'3"  
Calculated Area: 50 sq. ft  
Included: Yes

Heated: Yes  
Finished: Yes  
Enclosed: Yes  
Contiguous: Yes  
Permitted: Yes  
Wet space: No  
Addition: No  
Conversion: No

Home report

124 Sublett Drive, Hazel Green, Madison County, Alabama,  
United States, 35750

**12** Floor 1 - Bedroom

---



Max Dimensions: 13'10" x 10'10"  
Calculated Area: 150 sq. ft  
Included: Yes

Heated: Yes  
Finished: Yes  
Enclosed: Yes  
Contiguous: Yes  
Permitted: Yes  
Wet space: No  
Addition: No  
Conversion: No

**13** Floor 1 - Primary Bedroom

---

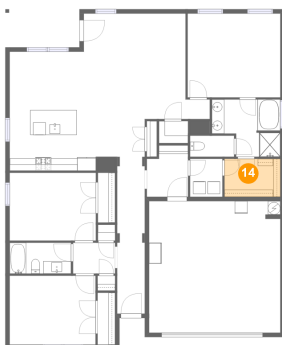


Max Dimensions: 14'10" x 13'5"  
Calculated Area: 199 sq. ft  
Included: Yes

Heated: Yes  
Finished: Yes  
Enclosed: Yes  
Contiguous: Yes  
Permitted: Yes  
Wet space: No  
Addition: No  
Conversion: No

**14** Floor 1 - W.I.C.

---



Max Dimensions: 8'11" x 6'1"  
Calculated Area: 54 sq. ft  
Included: Yes

Heated: Yes  
Finished: Yes  
Enclosed: Yes  
Contiguous: Yes  
Permitted: Yes  
Wet space: No  
Addition: No  
Conversion: No



Home report

124 Sublett Drive, Hazel Green, Madison County, Alabama,  
United States, 35750

**15** Floor 1 - Primary Bath

---

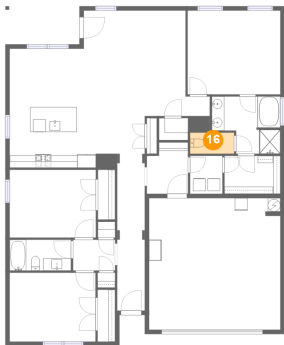


Max Dimensions: 11'0" x 9'2"  
Calculated Area: 85 sq. ft  
Included: Yes

Heated: Yes  
Finished: Yes  
Enclosed: Yes  
Contiguous: Yes  
Permitted: Yes  
Wet space: Yes  
Addition: No  
Conversion: No

**16** Floor 1 - WC

---



Max Dimensions: 7'1" x 3'4"  
Calculated Area: 24 sq. ft  
Included: Yes

Heated: Yes  
Finished: Yes  
Enclosed: Yes  
Contiguous: Yes  
Permitted: Yes  
Wet space: Yes  
Addition: No  
Conversion: No

**17** Floor 1 - Covered Patio

---

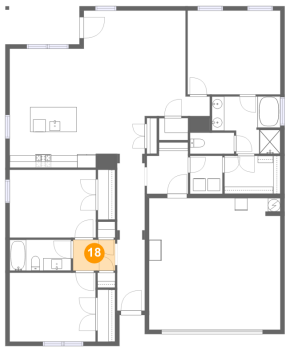


Max Dimensions: 11'10" x 6'1"  
Calculated Area: 72 sq. ft  
Included: No

Heated: No  
Finished: Yes  
Enclosed: No  
Contiguous: Yes  
Permitted: Yes  
Wet space: No  
Addition: No  
Conversion: No

124 Sublett Drive, Hazel Green, Madison County, Alabama,  
United States, 35750

**18** Floor 1 - Hall



Max Dimensions: 6'9" x 4'11"  
Calculated Area: 33 sq. ft  
Included: Yes

Heated: Yes  
Finished: Yes  
Enclosed: Yes  
Contiguous: Yes  
Permitted: Yes  
Wet space: No  
Addition: No  
Conversion: No