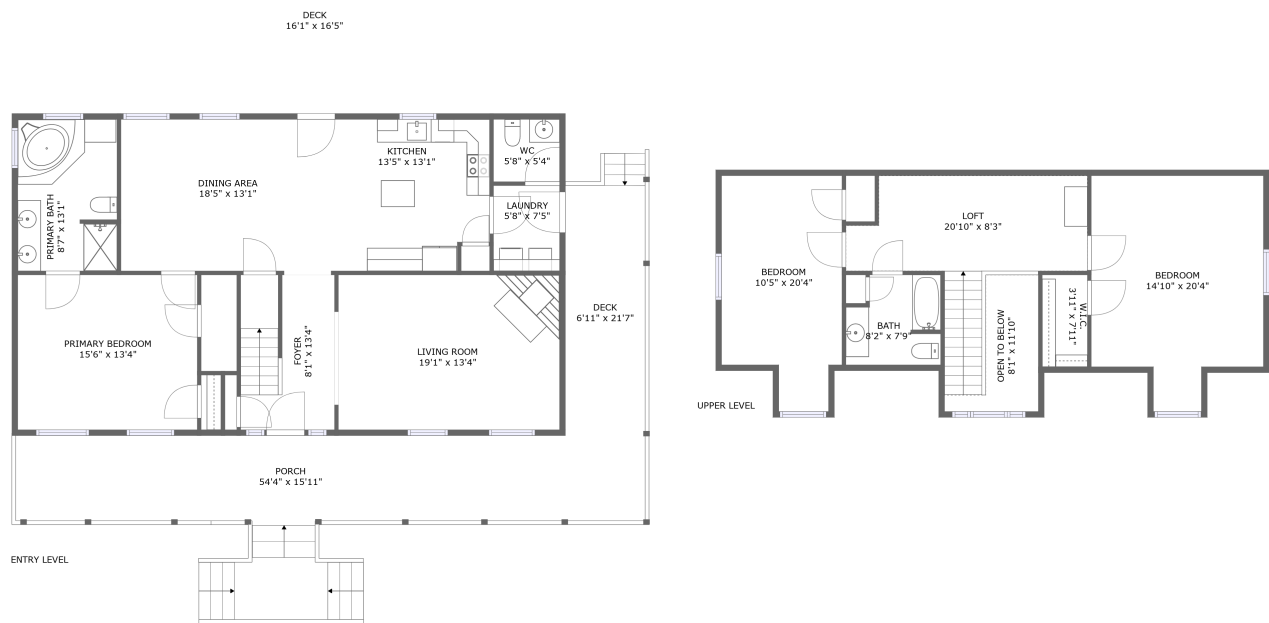


Home report

1157 Lakeland Pines Drive, Moneta, Bedford County, Virginia,  
United States, 24121



**Total Area: 2170 sq. ft**  
Floor 1: 1327 sq. ft, Floor 2: 843 sq. ft  
Excluded: Outdoor Deck 423 sq. ft, Outdoor Porch 489 sq. ft, Opentobelow 66 sq. ft

Property summary

 **2** Floors

 **3** Bedrooms

 **2** Bathrooms

 **1** Half baths

Home report

1157 Lakeland Pines Drive, Moneta, Bedford County, Virginia,  
United States, 24121



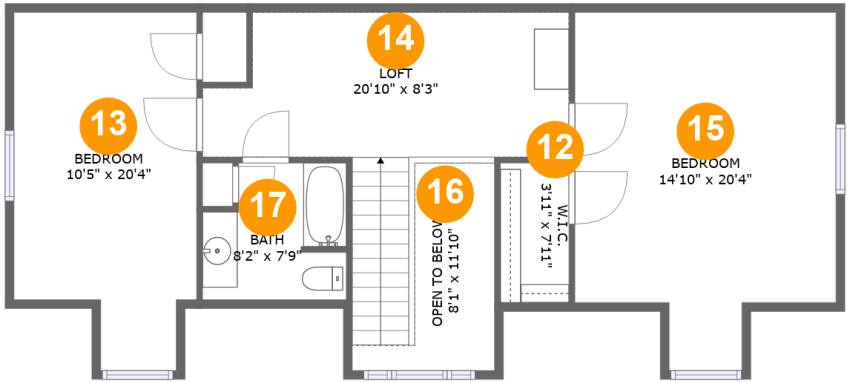
Room dimensions

Floor 1 Total:1327sqft Excluded: 912sqft

| #  |                 | Max Dimensions | sqft       | Included |
|----|-----------------|----------------|------------|----------|
| 1  | WC              | 5'8" x 5'4"    | 31 sq. ft  | Yes      |
| 2  | Kitchen         | 13'5" x 13'1"  | 168 sq. ft | Yes      |
| 3  | Living Room     | 19'1" x 13'4"  | 255 sq. ft | Yes      |
| 4  | Laundry         | 5'8" x 7'5"    | 42 sq. ft  | Yes      |
| 5  | Deck            | 16'1" x 16'5"  | 265 sq. ft | No       |
| 6  | Porch           | 54'4" x 15'11" | 489 sq. ft | No       |
| 7  | Foyer           | 8'1" x 13'4"   | 106 sq. ft | Yes      |
| 8  | Primary Bath    | 8'7" x 13'1"   | 111 sq. ft | Yes      |
| 9  | Deck            | 6'11" x 21'7"  | 158 sq. ft | No       |
| 10 | Primary Bedroom | 15'6" x 13'4"  | 207 sq. ft | Yes      |
| 11 | Dining Area     | 18'5" x 13'1"  | 242 sq. ft | Yes      |

Home report

1157 Lakeland Pines Drive, Moneta, Bedford County, Virginia,  
United States, 24121



Room dimensions

Floor 2 Total:843sqft    Excluded: 66sqft

| #  |               | Max Dimensions | sqft       | Included |
|----|---------------|----------------|------------|----------|
| 12 | W.I.C.        | 3'11" x 7'11"  | 31 sq. ft  | Yes      |
| 13 | Bedroom       | 10'5" x 20'4"  | 187 sq. ft | Yes      |
| 14 | Loft          | 20'10" x 8'3"  | 199 sq. ft | Yes      |
| 15 | Bedroom       | 14'10" x 20'4" | 261 sq. ft | Yes      |
| 16 | Open To Below | 8'1" x 11'10"  | 59 sq. ft  | No       |
| 17 | Bath          | 8'2" x 7'9"    | 57 sq. ft  | Yes      |

1157 Lakeland Pines Drive, Moneta, Bedford County, Virginia,  
United States, 24121

1 Floor 1 - WC



Max Dimensions: 5'8" x 5'4"  
Calculated Area: 31 sq. ft  
Included: Yes

Heated: Yes  
Finished: Yes  
Enclosed: Yes  
Contiguous: Yes  
Permitted: Yes  
Wet space: Yes  
Addition: No  
Conversion: No

2 Floor 1 - Kitchen



Max Dimensions: 13'5" x 13'1"  
Calculated Area: 168 sq. ft  
Included: Yes

Heated: Yes  
Finished: Yes  
Enclosed: Yes  
Contiguous: Yes  
Permitted: Yes  
Wet space: No  
Addition: No  
Conversion: No

1157 Lakeland Pines Drive, Moneta, Bedford County, Virginia,  
United States, 24121

3 Floor 1 - Living Room



Max Dimensions: 19'1" x 13'4"  
Calculated Area: 255 sq. ft  
Included: Yes

Heated: Yes  
Finished: Yes  
Enclosed: Yes  
Contiguous: Yes  
Permitted: Yes  
Wet space: No  
Addition: No  
Conversion: No

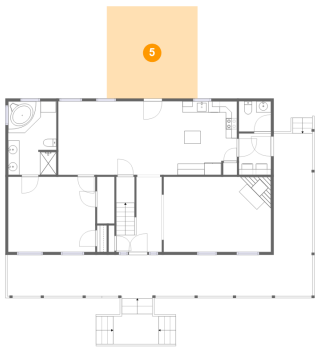
4 Floor 1 - Laundry



Max Dimensions: 5'8" x 7'5"  
Calculated Area: 42 sq. ft  
Included: Yes

Heated: Yes  
Finished: Yes  
Enclosed: Yes  
Contiguous: Yes  
Permitted: Yes  
Wet space: No  
Addition: No  
Conversion: No

5 Floor 1 - Deck

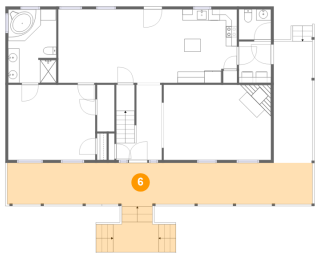


Max Dimensions: 16'1" x 16'5"  
Calculated Area: 265 sq. ft  
Included: No

Heated: No  
Finished: No  
Enclosed: No  
Contiguous: Yes  
Permitted: Yes  
Wet space: No  
Addition: No  
Conversion: No

1157 Lakeland Pines Drive, Moneta, Bedford County, Virginia,  
United States, 24121

6 Floor 1 - Porch



Max Dimensions: 54'4" x 15'11"  
Calculated Area: 489 sq. ft  
Included: No

Heated: No  
Finished: No  
Enclosed: No  
Contiguous: Yes  
Permitted: Yes  
Wet space: No  
Addition: No  
Conversion: No

7 Floor 1 - Foyer



Max Dimensions: 8'1" x 13'4"  
Calculated Area: 106 sq. ft  
Included: Yes

Heated: Yes  
Finished: Yes  
Enclosed: Yes  
Contiguous: Yes  
Permitted: Yes  
Wet space: No  
Addition: No  
Conversion: No

8 Floor 1 - Primary Bath



Max Dimensions: 8'7" x 13'1"  
Calculated Area: 111 sq. ft  
Included: Yes

Heated: Yes  
Finished: Yes  
Enclosed: Yes  
Contiguous: Yes  
Permitted: Yes  
Wet space: Yes  
Addition: No  
Conversion: No

1157 Lakeland Pines Drive, Moneta, Bedford County, Virginia,  
United States, 24121

9 Floor 1 - Deck



Max Dimensions: 6'11" x 21'7"  
Calculated Area: 158 sq. ft  
Included: No

Heated: No  
Finished: Yes  
Enclosed: No  
Contiguous: Yes  
Permitted: Yes  
Wet space: No  
Addition: No  
Conversion: No

10 Floor 1 - Primary Bedroom



Max Dimensions: 15'6" x 13'4"  
Calculated Area: 207 sq. ft  
Included: Yes

Heated: Yes  
Finished: Yes  
Enclosed: Yes  
Contiguous: Yes  
Permitted: Yes  
Wet space: No  
Addition: No  
Conversion: No

11 Floor 1 - Dining Area

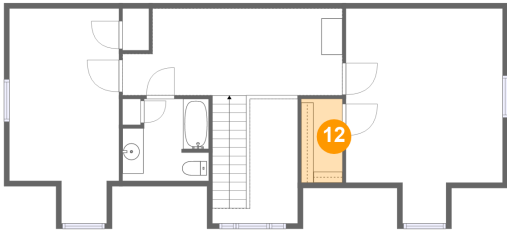


Max Dimensions: 18'5" x 13'1"  
Calculated Area: 242 sq. ft  
Included: Yes

Heated: Yes  
Finished: Yes  
Enclosed: Yes  
Contiguous: Yes  
Permitted: Yes  
Wet space: No  
Addition: No  
Conversion: No

1157 Lakeland Pines Drive, Moneta, Bedford County, Virginia,  
United States, 24121

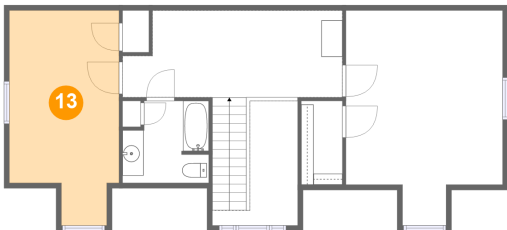
12 Floor 2 - W.I.C.



Max Dimensions: 3'11" x 7'11"  
Calculated Area: 31 sq. ft  
Included: Yes

Heated: Yes  
Finished: Yes  
Enclosed: Yes  
Contiguous: Yes  
Permitted: Yes  
Wet space: No  
Addition: No  
Conversion: No

13 Floor 2 - Bedroom



Max Dimensions: 10'5" x 20'4"  
Calculated Area: 187 sq. ft  
Included: Yes

Heated: Yes  
Finished: Yes  
Enclosed: Yes  
Contiguous: Yes  
Permitted: Yes  
Wet space: No  
Addition: No  
Conversion: No

14 Floor 2 - Loft



Max Dimensions: 20'10" x 8'3"  
Calculated Area: 199 sq. ft  
Included: Yes

Heated: Yes  
Finished: Yes  
Enclosed: Yes  
Contiguous: Yes  
Permitted: Yes  
Wet space: No  
Addition: No  
Conversion: No



## Home report

1157 Lakeland Pines Drive, Moneta, Bedford County, Virginia,  
United States, 24121

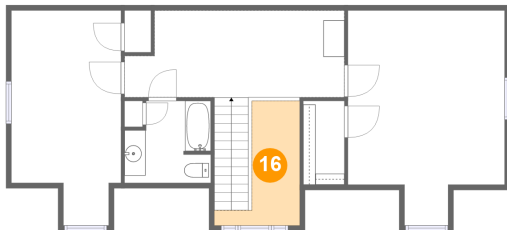
### 15 Floor 2 - Bedroom



Max Dimensions: 14'10" x 20'4"  
Calculated Area: 261 sq. ft  
Included: Yes

Heated: Yes  
Finished: Yes  
Enclosed: Yes  
Contiguous: Yes  
Permitted: Yes  
Wet space: No  
Addition: No  
Conversion: No

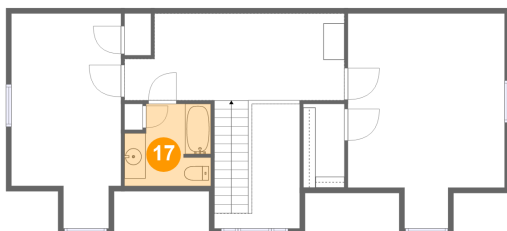
### 16 Floor 2 - Open To Below



Max Dimensions: 8'1" x 11'10"  
Calculated Area: 59 sq. ft  
Included: No

Heated: No  
Finished: No  
Enclosed: No  
Contiguous: Yes  
Permitted: No  
Wet space: No  
Addition: No  
Conversion: No

### 17 Floor 2 - Bath



Max Dimensions: 8'2" x 7'9"  
Calculated Area: 57 sq. ft  
Included: Yes

Heated: Yes  
Finished: Yes  
Enclosed: Yes  
Contiguous: Yes  
Permitted: Yes  
Wet space: Yes  
Addition: No  
Conversion: No