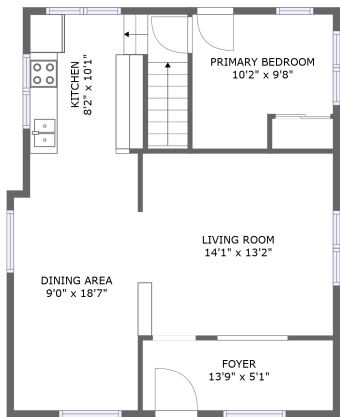
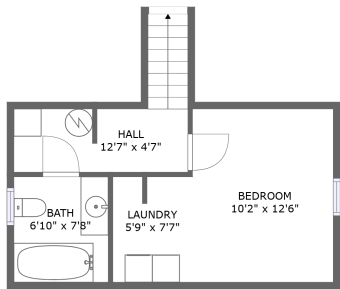


Home report

1510 Mill St,Belle Fourche,SD,US



FLOOR 2



FLOOR 1

Property summary




0
Garages



2
Bedrooms



1
Bathrooms



0
Half baths



2
Floors



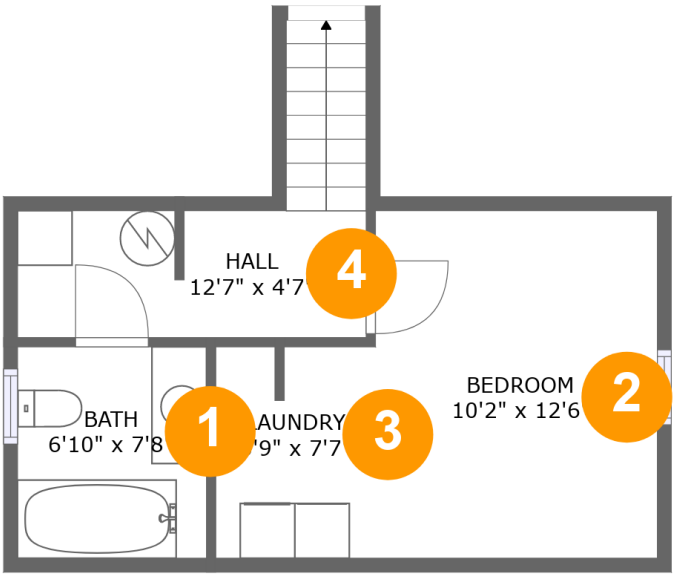
1,052
Gross living
area sqft



1,052
Total sqft

Home report

1510 Mill St,Belle Fourche,SD,US



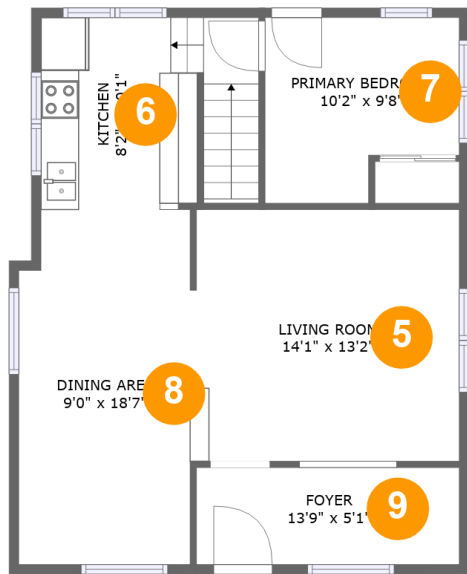
Room dimensions

Floor 1 Total sqft: 353 Living area: 353

| # | | Dimensions | sqft | Counted as living area |
|---|---------|---------------|------------|------------------------|
| 1 | Bath | 6'10" x 7'8" | 52 sq. ft | Yes |
| 2 | Bedroom | 10'2" x 12'6" | 128 sq. ft | Yes |
| 3 | Laundry | 5'9" x 7'7" | 43 sq. ft | Yes |
| 4 | Hall | 12'7" x 4'7" | 77 sq. ft | Yes |

Home report

1510 Mill St,Belle Fourche,SD,US

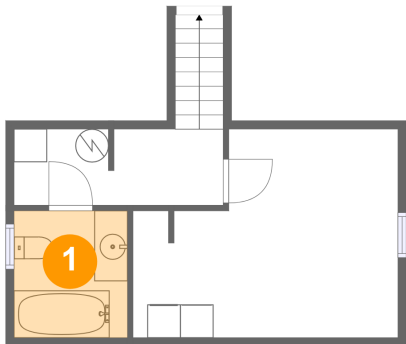


Room dimensions

Floor 2 Total sqft: 699 Living area: 699

| # | | Dimensions | sqft | Counted as living area |
|---|-----------------|---------------|------------|------------------------|
| 5 | Living Room | 14'1" x 13'2" | 185 sq. ft | Yes |
| 6 | Kitchen | 8'2" x 10'1" | 111 sq. ft | Yes |
| 7 | Primary Bedroom | 10'2" x 9'8" | 87 sq. ft | Yes |
| 8 | Dining Area | 9'0" x 18'7" | 163 sq. ft | Yes |
| 9 | Foyer | 13'9" x 5'1" | 72 sq. ft | Yes |

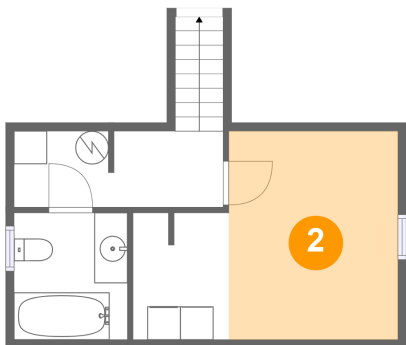
1 Floor 1 - Bath



Dimensions: 6'10" x 7'8"
Area: 52 sq. ft
Counted as living area: Yes

Heated: Yes
Finished: Yes
Enclosed: Yes
Contiguous: Yes
Permitted: Yes
Wet space: Yes
Addition: No
Conversion: No

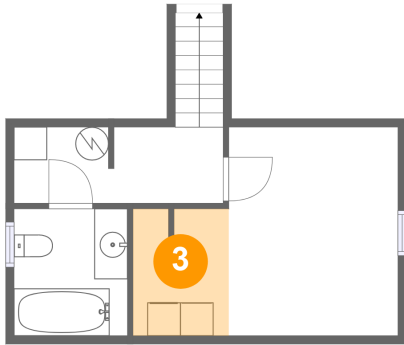
2 Floor 1 - Bedroom



Dimensions: 10'2" x 12'6"
Area: 128 sq. ft
Counted as living area: Yes

Heated: Yes
Finished: Yes
Enclosed: Yes
Contiguous: Yes
Permitted: Yes
Wet space: No
Addition: No
Conversion: No

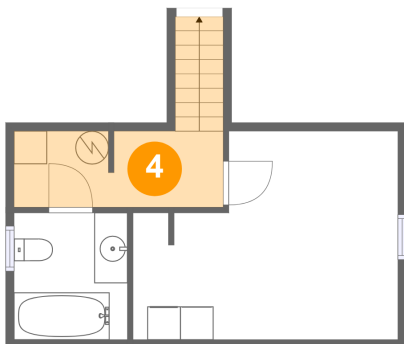
3 Floor 1 - Laundry



Dimensions: 5'9" x 7'7"
Area: 43 sq. ft
Counted as living area: Yes

Heated: Yes
Finished: Yes
Enclosed: Yes
Contiguous: Yes
Permitted: Yes
Wet space: No
Addition: No
Conversion: No

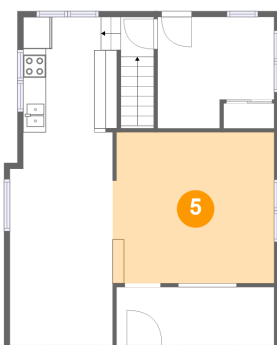
4 Floor 1 - Hall



Dimensions: 12'7" x 4'7"
Area: 77 sq. ft
Counted as living area: Yes

Heated: Yes
Finished: Yes
Enclosed: Yes
Contiguous: Yes
Permitted: Yes
Wet space: No
Addition: No
Conversion: No

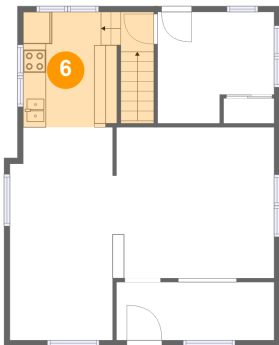
5 Floor 2 - Living Room



Dimensions: 14'1" x 13'2"
Area: 185 sq. ft
Counted as living area: Yes

Heated: Yes
Finished: Yes
Enclosed: Yes
Contiguous: Yes
Permitted: Yes
Wet space: No
Addition: No
Conversion: No

6 Floor 2 - Kitchen



Dimensions: 8'2" x 10'1"
Area: 111 sq. ft
Counted as living area: Yes

Heated: Yes
Finished: Yes
Enclosed: Yes
Contiguous: Yes
Permitted: Yes
Wet space: No
Addition: No
Conversion: No

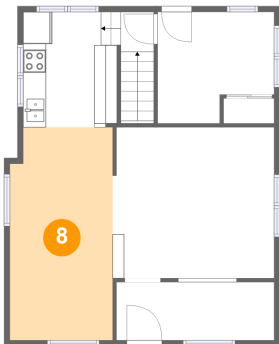
7 Floor 2 - Primary Bedroom



Dimensions: 10'2" x 9'8"
Area: 87 sq. ft
Counted as living area: Yes

Heated: Yes
Finished: Yes
Enclosed: Yes
Contiguous: Yes
Permitted: Yes
Wet space: No
Addition: No
Conversion: No

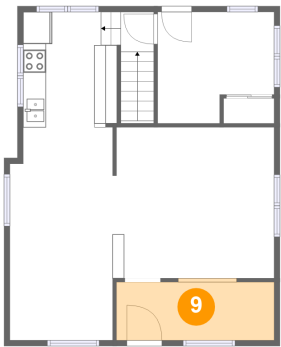
8 Floor 2 - Dining Area



Dimensions: 9'0" x 18'7"
Area: 163 sq. ft
Counted as living area: Yes

Heated: Yes
Finished: Yes
Enclosed: Yes
Contiguous: Yes
Permitted: Yes
Wet space: No
Addition: No
Conversion: No

9 Floor 2 - Foyer



Dimensions: 13'9" x 5'1"
Area: 72 sq. ft
Counted as living area: Yes

Heated: Yes
Finished: Yes
Enclosed: Yes
Contiguous: Yes
Permitted: Yes
Wet space: No
Addition: No
Conversion: No