

Home report

1230 Nature Lane, Pelican Point, Union Hall, Franklin County,
Virginia, United States, 24176




Total Area: 2234 sq. ft

Floor 1: 464 sq. ft, Floor 2: 1333 sq. ft, Floor 3: 437 sq. ft

Excluded: Outdoor Patio Covered 468 sq. ft, Outdoor Deck 406 sq. ft, Outdoor Porch 59 sq. ft, Fireplace 10 sq. ft, Opentobelow 358 sq. ft, Attic 56 sq. ft

Property summary

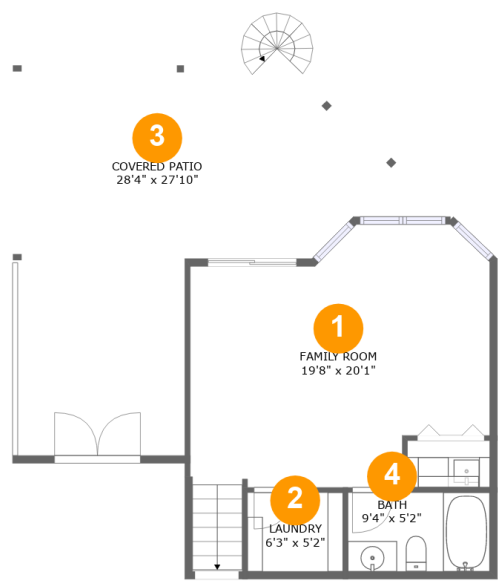
 3 Floors

 3 Bedrooms

 3 Bathrooms

Home report

1230 Nature Lane, Pelican Point, Union Hall, Franklin County,
Virginia, United States, 24176



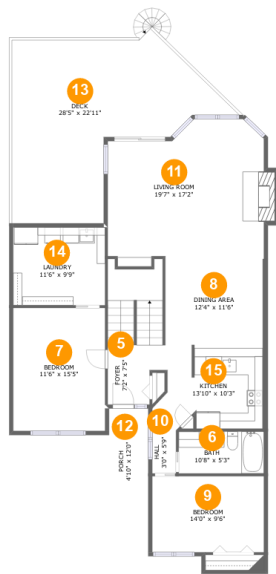
Room dimensions

Floor 1 Total:464sqft Excluded: 468sqft

#		Max Dimensions	sqft	Included
1	Family Room	19'8" x 20'1"	309 sq. ft	Yes
2	Laundry	6'3" x 5'2"	33 sq. ft	Yes
3	Covered Patio	28'4" x 27'10"	468 sq. ft	No
4	Bath	9'4" x 5'2"	48 sq. ft	Yes

Home report

1230 Nature Lane, Pelican Point, Union Hall, Franklin County,
Virginia, United States, 24176



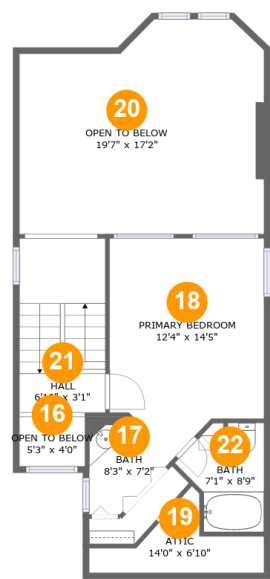
Room dimensions

Floor 2 Total:1333sqft Excluded: 475sqft

#		Max Dimensions	sqft	Included
5	Foyer	7'2" x 7'5"	113 sq. ft	Yes
6	Bath	10'8" x 5'3"	56 sq. ft	Yes
7	Bedroom	11'6" x 15'5"	177 sq. ft	Yes
8	Dining Area	12'4" x 11'6"	140 sq. ft	Yes
9	Bedroom	14'0" x 9'6"	133 sq. ft	Yes
10	Hall	3'0" x 5'9"	17 sq. ft	Yes
11	Living Room	19'7" x 17'2"	320 sq. ft	Yes
12	Porch	4'10" x 12'0"	59 sq. ft	No
13	Deck	28'5" x 22'11"	406 sq. ft	No
14	Laundry	11'6" x 9'9"	112 sq. ft	Yes
15	Kitchen	13'10" x 10'3"	124 sq. ft	Yes

Home report

1230 Nature Lane, Pelican Point, Union Hall, Franklin County,
Virginia, United States, 24176



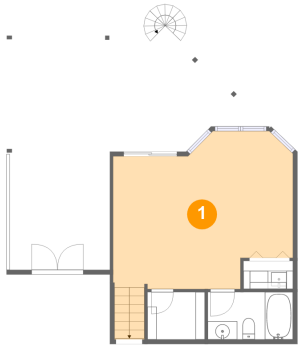
Room dimensions

Floor 3 Total:436sqft Excluded: 414sqft

#		Max Dimensions	sqft	Included
16	Open To Below	5'3" x 4'0"	21 sq. ft	No
17	Bath	8'3" x 7'2"	47 sq. ft	Yes
18	Primary Bedroom	12'4" x 14'5"	177 sq. ft	Yes
19	Attic	14'0" x 6'10"	46 sq. ft	No
20	Open To Below	19'7" x 17'2"	306 sq. ft	No
21	Hall	6'10" x 3'1"	99 sq. ft	Yes
22	Bath	7'1" x 8'9"	43 sq. ft	Yes

1230 Nature Lane, Pelican Point, Union Hall, Franklin County,
Virginia, United States, 24176

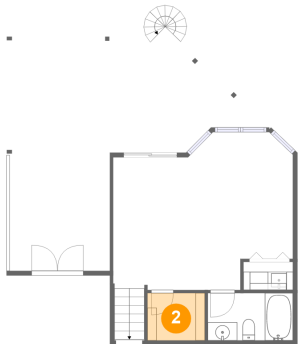
1 Floor 1 - Family Room



Max Dimensions: 19'8" x 20'1"
Calculated Area: 309 sq. ft
Included: Yes

Heated: Yes
Finished: Yes
Enclosed: Yes
Contiguous: Yes
Permitted: Yes
Wet space: No
Addition: No
Conversion: No

2 Floor 1 - Laundry



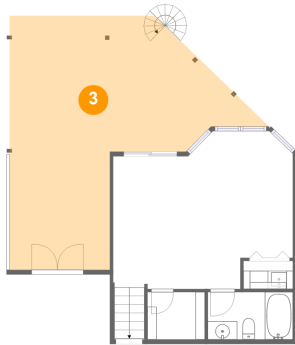
Max Dimensions: 6'3" x 5'2"
Calculated Area: 33 sq. ft
Included: Yes

Heated: Yes
Finished: Yes
Enclosed: Yes
Contiguous: Yes
Permitted: Yes
Wet space: No
Addition: No
Conversion: No

Home report

1230 Nature Lane, Pelican Point, Union Hall, Franklin County,
Virginia, United States, 24176

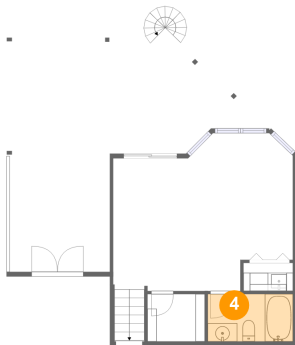
3 Floor 1 - Covered Patio



Max Dimensions: 28'4" x 27'10"
Calculated Area: 468 sq. ft
Included: No

Heated: No
Finished: Yes
Enclosed: No
Contiguous: Yes
Permitted: Yes
Wet space: No
Addition: No
Conversion: No

4 Floor 1 - Bath



Max Dimensions: 9'4" x 5'2"
Calculated Area: 48 sq. ft
Included: Yes

Heated: Yes
Finished: Yes
Enclosed: Yes
Contiguous: Yes
Permitted: Yes
Wet space: Yes
Addition: No
Conversion: No

5 Floor 2 - Foyer



Max Dimensions: 7'2" x 7'5"
Calculated Area: 113 sq. ft
Included: Yes

Heated: Yes
Finished: Yes
Enclosed: Yes
Contiguous: Yes
Permitted: Yes
Wet space: No
Addition: No
Conversion: No

1230 Nature Lane, Pelican Point, Union Hall, Franklin County,
Virginia, United States, 24176

6 Floor 2 - Bath



Max Dimensions: 10'8" x 5'3"
Calculated Area: 56 sq. ft
Included: Yes

Heated: Yes
Finished: Yes
Enclosed: Yes
Contiguous: Yes
Permitted: Yes
Wet space: Yes
Addition: No
Conversion: No

7 Floor 2 - Bedroom



Max Dimensions: 11'6" x 15'5"
Calculated Area: 177 sq. ft
Included: Yes

Heated: Yes
Finished: Yes
Enclosed: Yes
Contiguous: Yes
Permitted: Yes
Wet space: No
Addition: No
Conversion: No

8 Floor 2 - Dining Area



Max Dimensions: 12'4" x 11'6"
Calculated Area: 140 sq. ft
Included: Yes

Heated: Yes
Finished: Yes
Enclosed: Yes
Contiguous: Yes
Permitted: Yes
Wet space: No
Addition: No
Conversion: No

1230 Nature Lane, Pelican Point, Union Hall, Franklin County,
Virginia, United States, 24176

9 Floor 2 - Bedroom



Max Dimensions: 14'0" x 9'6"
Calculated Area: 133 sq. ft
Included: Yes

Heated: Yes
Finished: Yes
Enclosed: Yes
Contiguous: Yes
Permitted: Yes
Wet space: No
Addition: No
Conversion: No

10 Floor 2 - Hall



Max Dimensions: 3'0" x 5'9"
Calculated Area: 17 sq. ft
Included: Yes

Heated: Yes
Finished: Yes
Enclosed: Yes
Contiguous: Yes
Permitted: Yes
Wet space: No
Addition: No
Conversion: No

11 Floor 2 - Living Room



Max Dimensions: 19'7" x 17'2"
Calculated Area: 320 sq. ft
Included: Yes

Heated: Yes
Finished: Yes
Enclosed: Yes
Contiguous: Yes
Permitted: Yes
Wet space: No
Addition: No
Conversion: No

1230 Nature Lane, Pelican Point, Union Hall, Franklin County,
Virginia, United States, 24176

12 Floor 2 - Porch



Max Dimensions: 4'10" x 12'0"
Calculated Area: 59 sq. ft
Included: No

Heated: No
Finished: Yes
Enclosed: No
Contiguous: Yes
Permitted: Yes
Wet space: No
Addition: No
Conversion: No

13 Floor 2 - Deck



Max Dimensions: 28'5" x 22'11"
Calculated Area: 406 sq. ft
Included: No

Heated: No
Finished: Yes
Enclosed: No
Contiguous: Yes
Permitted: Yes
Wet space: No
Addition: No
Conversion: No

14 Floor 2 - Laundry



Max Dimensions: 11'6" x 9'9"
Calculated Area: 112 sq. ft
Included: Yes

Heated: Yes
Finished: Yes
Enclosed: Yes
Contiguous: Yes
Permitted: Yes
Wet space: No
Addition: No
Conversion: No

1230 Nature Lane, Pelican Point, Union Hall, Franklin County,
Virginia, United States, 24176

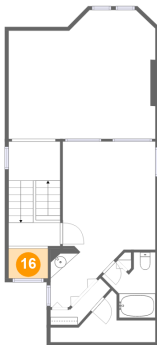
15 Floor 2 - Kitchen



Max Dimensions: 13'10" x 10'3"
Calculated Area: 124 sq. ft
Included: Yes

Heated: Yes
Finished: Yes
Enclosed: Yes
Contiguous: Yes
Permitted: Yes
Wet space: No
Addition: No
Conversion: No

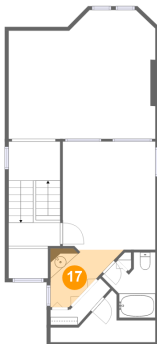
16 Floor 3 - Open To Below



Max Dimensions: 5'3" x 4'0"
Calculated Area: 21 sq. ft
Included: No

Heated: No
Finished: No
Enclosed: No
Contiguous: Yes
Permitted: No
Wet space: No
Addition: No
Conversion: No

17 Floor 3 - Bath

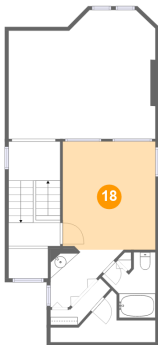


Max Dimensions: 8'3" x 7'2"
Calculated Area: 47 sq. ft
Included: Yes

Heated: Yes
Finished: Yes
Enclosed: Yes
Contiguous: Yes
Permitted: Yes
Wet space: Yes
Addition: No
Conversion: No

1230 Nature Lane, Pelican Point, Union Hall, Franklin County,
Virginia, United States, 24176

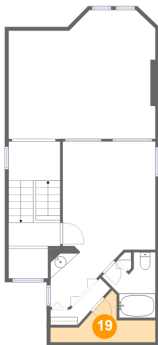
18 Floor 3 - Primary Bedroom



Max Dimensions: 12'4" x 14'5"
Calculated Area: 177 sq. ft
Included: Yes

Heated: Yes
Finished: Yes
Enclosed: Yes
Contiguous: Yes
Permitted: Yes
Wet space: No
Addition: No
Conversion: No

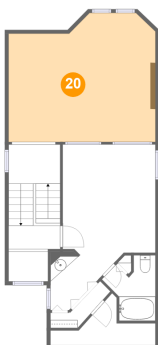
19 Floor 3 - Attic



Max Dimensions: 14'0" x 6'10"
Calculated Area: 46 sq. ft
Included: No

Heated: No
Finished: No
Enclosed: Yes
Contiguous: Yes
Permitted: Yes
Wet space: No
Addition: No
Conversion: No

20 Floor 3 - Open To Below



Max Dimensions: 19'7" x 17'2"
Calculated Area: 306 sq. ft
Included: No

Heated: No
Finished: No
Enclosed: No
Contiguous: Yes
Permitted: No
Wet space: No
Addition: No
Conversion: No

1230 Nature Lane, Pelican Point, Union Hall, Franklin County,
Virginia, United States, 24176

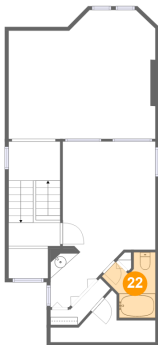
21 Floor 3 - Hall



Max Dimensions: 6'10" x 3'1"
Calculated Area: 99 sq. ft
Included: Yes

Heated: Yes
Finished: Yes
Enclosed: Yes
Contiguous: Yes
Permitted: Yes
Wet space: No
Addition: No
Conversion: No

22 Floor 3 - Bath



Max Dimensions: 7'1" x 8'9"
Calculated Area: 43 sq. ft
Included: Yes

Heated: Yes
Finished: Yes
Enclosed: Yes
Contiguous: Yes
Permitted: Yes
Wet space: Yes
Addition: No
Conversion: No