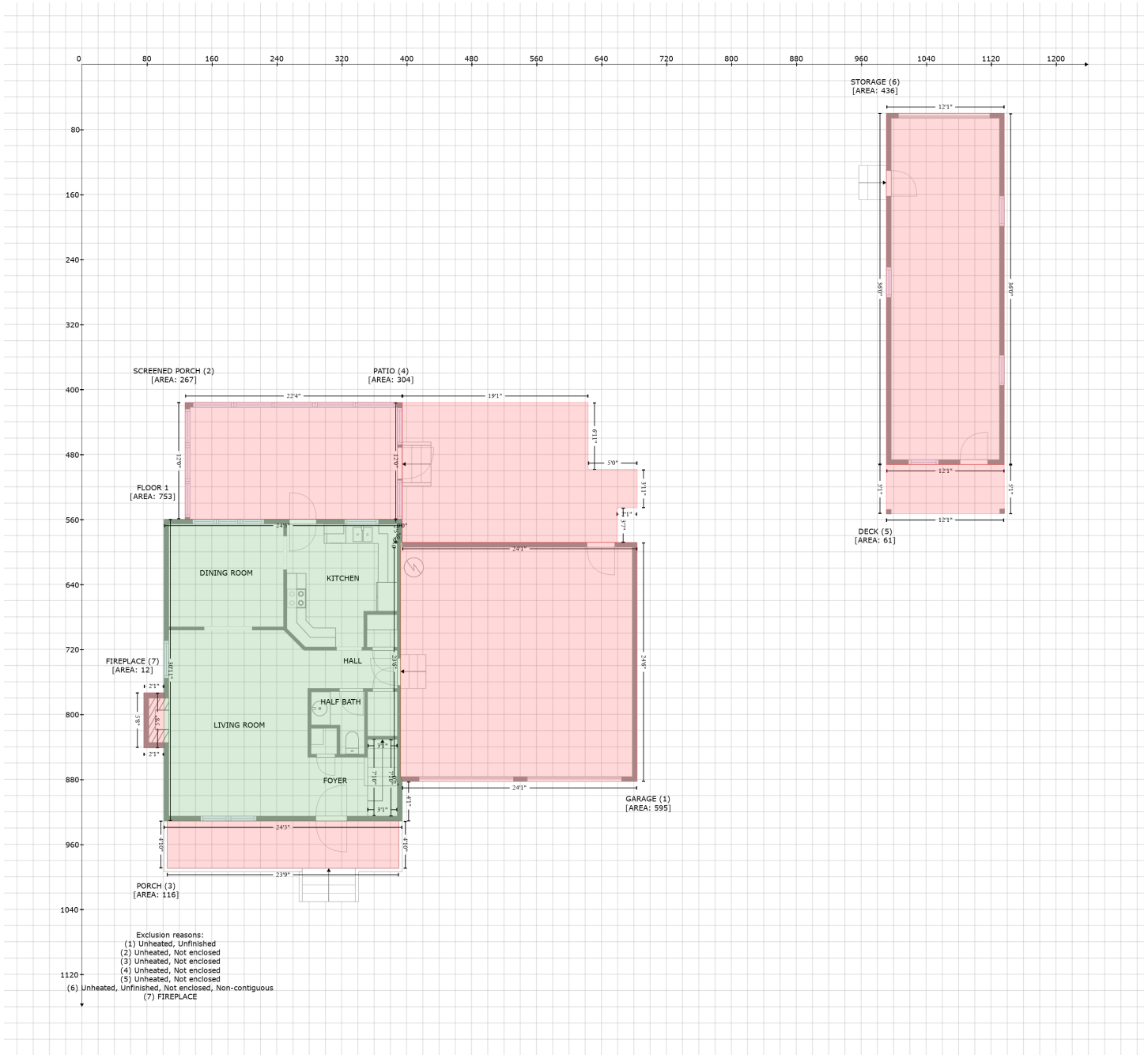


146 Alan Lane, Clayton, Johnston County, North Carolina, United States, 27520

Gross Living Area: 1895 sq. ft



Space	Area (sq. ft)	Calculation
FLOOR 1 (Living area)	753	$-\left((394.3 + 394.3) * (559.9 - 588.7) + (394.3 + 394.6) * (588.7 - 588.4) + (394.6 + 392.6) * (588.4 - 594.4) + (392.6 + 392.6) * (594.4 - 876.7) + (392.6 + 394.6) * (876.7 - 882.7) + (394.6 + 394.6) * (882.7 - 931.3) + (394.6 + 101.1) * (931.3 - 931.3) + (101.1 + 101.1) * (931.3 - 559.9) + (101.1 + 394.3) * (559.9 - 559.9)\right) * 0.5 * 0.00694$
GARAGE (Non-living area)	595	$-\left((684 + 684) * (588.4 - 882.7) + (684 + 394.6) * (882.7 - 882.7) + (394.6 + 392.6) * (882.7 - 876.7) + (392.6 + 392.6) * (876.7 - 594.4) + (392.6 + 394.6) * (594.4 - 588.4) + (394.6 + 684) * (588.4 - 882.7)\right) * 0.5 * 0.00694$

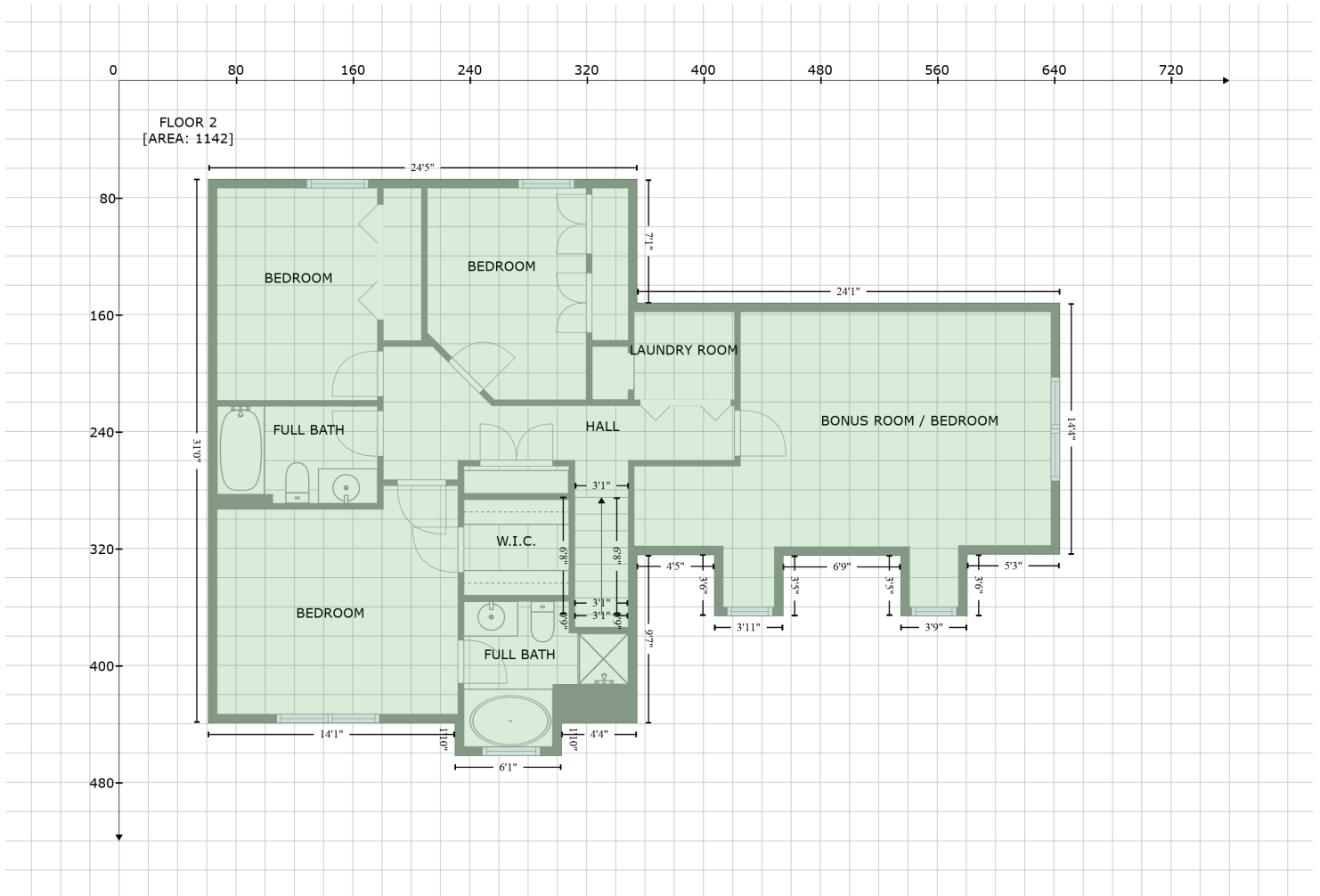
146 Alan Lane, Clayton, Johnston County, North Carolina, United States, 27520

Gross Living Area: 1895 sq. ft

Space	Area (sq. ft)	Calculation <small>Coordinate Polygon Area Algorithm using inches</small>
		$(588.4 - 588.4) * 0.5 * 0.00694$
SCREENED PORCH (Non-living area)	267	$-((394.6 + 394.6) * (416.1 - 559.9) + (394.6 + 127.1) * (559.9 - 559.9) + (127.1 + 127.1) * (559.9 - 416.1) + (127.1 + 394.6) * (416.1 - 416.1)) * 0.5 * 0.00694$
PORCH (Non-living area)	116	$-((390.6 + 390.6) * (931.3 - 989.6) + (390.6 + 105.1) * (989.6 - 989.6) + (105.1 + 105.1) * (989.6 - 931.3) + (105.1 + 390.6) * (931.3 - 931.3)) * 0.5 * 0.00694$
PATIO (Non-living area)	304	$-((623.6 + 623.6) * (416.1 - 498.7) + (623.6 + 684) * (498.7 - 498.7) + (684 + 684) * (498.7 - 545.8) + (684 + 658.9) * (545.8 - 545.8) + (658.9 + 658.9) * (545.8 - 588.4) + (658.9 + 394.6) * (588.4 - 588.4) + (394.6 + 394.3) * (588.4 - 588.7) + (394.3 + 394.3) * (588.7 - 559.9) + (394.3 + 394.6) * (559.9 - 559.9) + (394.6 + 394.6) * (559.9 - 416.1) + (394.6 + 623.6) * (416.1 - 416.1)) * 0.5 * 0.00694$
DECK (Non-living area)	61	$-((1136.2 + 1136.2) * (492.5 - 553.1) + (1136.2 + 991) * (553.1 - 553.1) + (991 + 991) * (553.1 - 492.5) + (991 + 1136.2) * (492.5 - 492.5)) * 0.5 * 0.00694$
STORAGE (Non-living area)	436	$-((1136.2 + 1136.2) * (60.2 - 492.5) + (1136.2 + 991) * (492.5 - 492.5) + (991 + 991) * (492.5 - 60.2) + (991 + 1136.2) * (60.2 - 60.2)) * 0.5 * 0.00694$
FIREPLACE (Non-living area)	12	$-((101.1 + 101.1) * (773.5 - 841.4) + (101.1 + 76.2) * (841.4 - 841.4) + (76.2 + 76.2) * (841.4 - 773.5) + (76.2 + 101.1) * (773.5 - 773.5)) * 0.5 * 0.00694$

146 Alan Lane, Clayton, Johnston County, North Carolina, United States, 27520

Gross Living Area: 1895 sq. ft



Space	Area (sq. ft)	Calculation
FLOOR 2 (Living area)	1142	Coordinate Polygon Area Algorithm using inches $-((354.6 + 354.6) * (67.5 - 152.2) + (354.6 + 644) * (152.2 - 152.2) + (644 + 644) * (152.2 - 324) + (644 + 580.6) * (324 - 324) + (580.6 + 580.6) * (324 - 366.2) + (580.6 + 535.1) * (366.2 - 366.2) + (535.1 + 535.1) * (366.2 - 324.8) + (535.1 + 454.6) * (324.8 - 324.8) + (454.6 + 454.6) * (324.8 - 366.2) + (454.6 + 407.5) * (366.2 - 366.2) + (407.5 + 407.5) * (366.2 - 324.4) + (407.5 + 354.6) * (324.4 - 324.4) + (354.6 + 354.6) * (324.4 - 439.4) + (354.6 + 303) * (439.4 - 439.4) + (303 + 303) * (439.4 - 461.8) + (303 + 230) * (461.8 - 461.8) + (230 + 230) * (461.8 - 439.4) + (230 + 61.1) * (439.4 - 439.4) + (61.1 + 61.1) * (439.4 - 67.5) + (61.1 + 354.6) * (67.5 - 67.5)) * 0.5 * 0.00694$