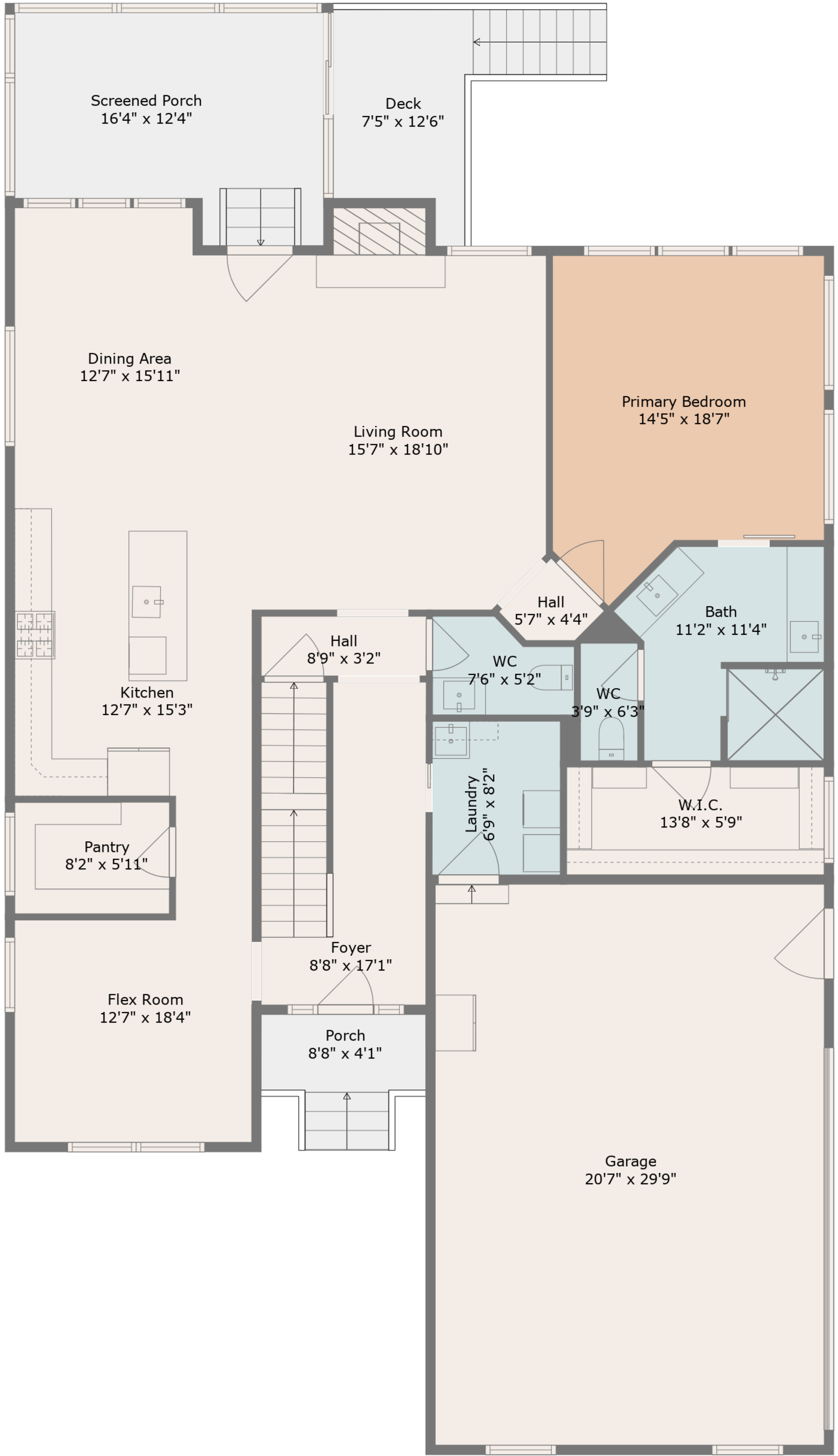


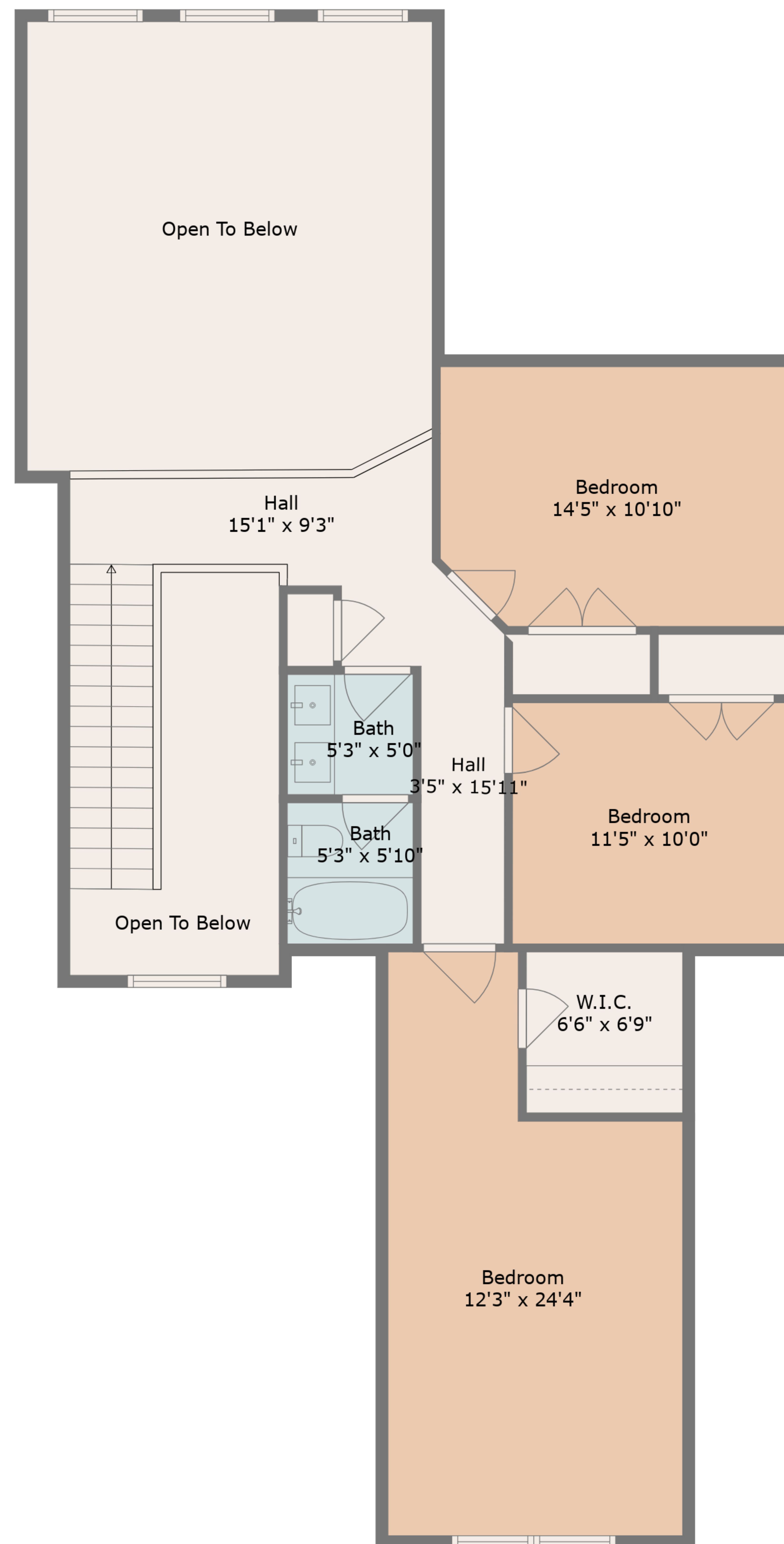
Total GLA: 2707 sq. ft | Total: 5479 sq. ft
Floor 1 - Below ground: (Excluded areas 1768 sq. ft)
Floor 2: 1771 sq. ft (Excluded areas 1004 sq. ft)
Floor 3: 936 sq. ft (Excluded areas 442 sq. ft)

Room Sizes Not For Sqft Calculation. All Measurements Require Professional Verification.



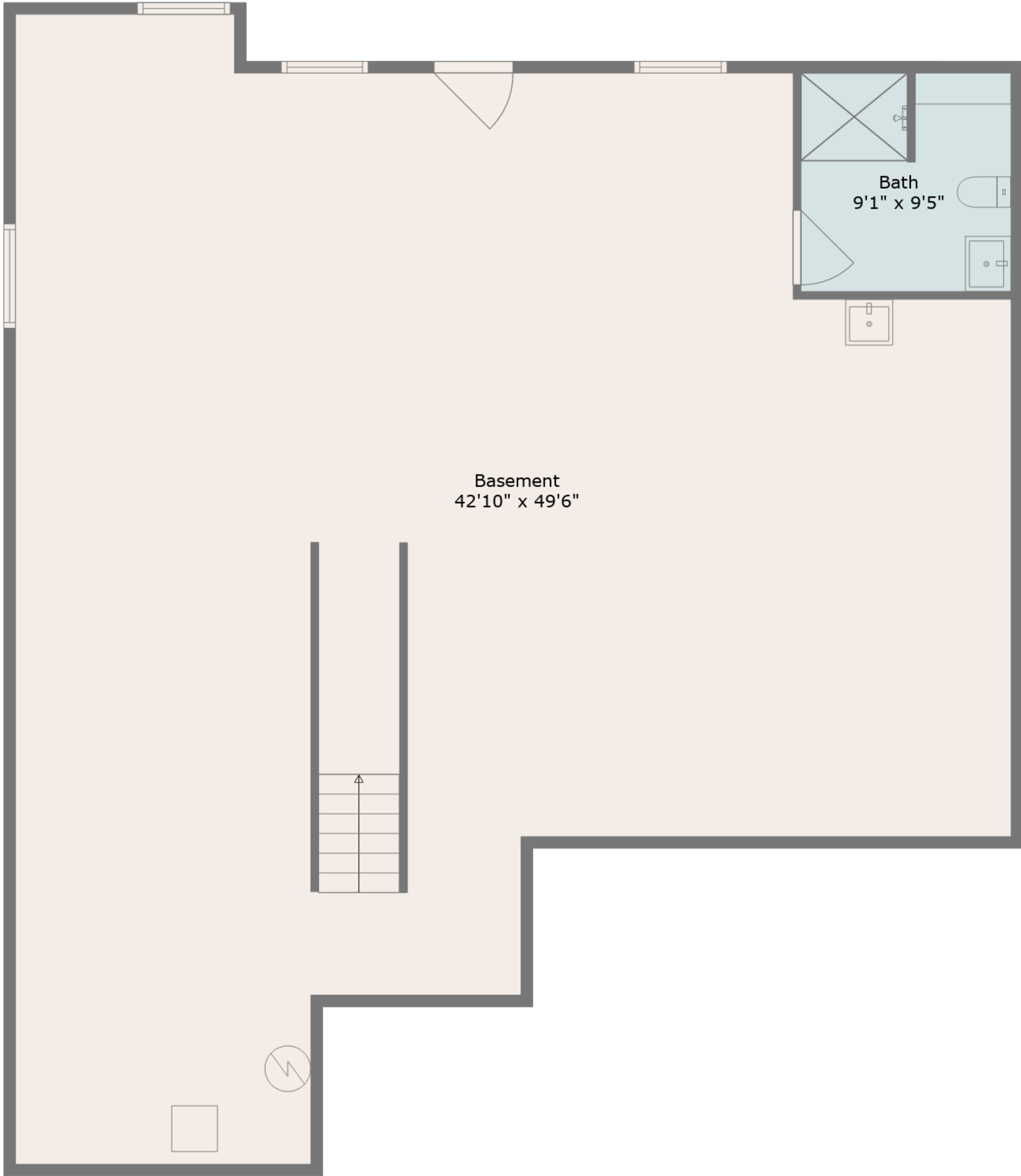
Total GLA: 2707 sq. ft | Total: 5479 sq. ft
Floor 1 - Below ground: (Excluded areas 1768 sq. ft)
Floor 2: 1771 sq. ft (Excluded areas 1004 sq. ft)
Floor 3: 936 sq. ft (Excluded areas 442 sq. ft)

Room Sizes Not For Sqft Calculation. All Measurements Require Professional Verification.

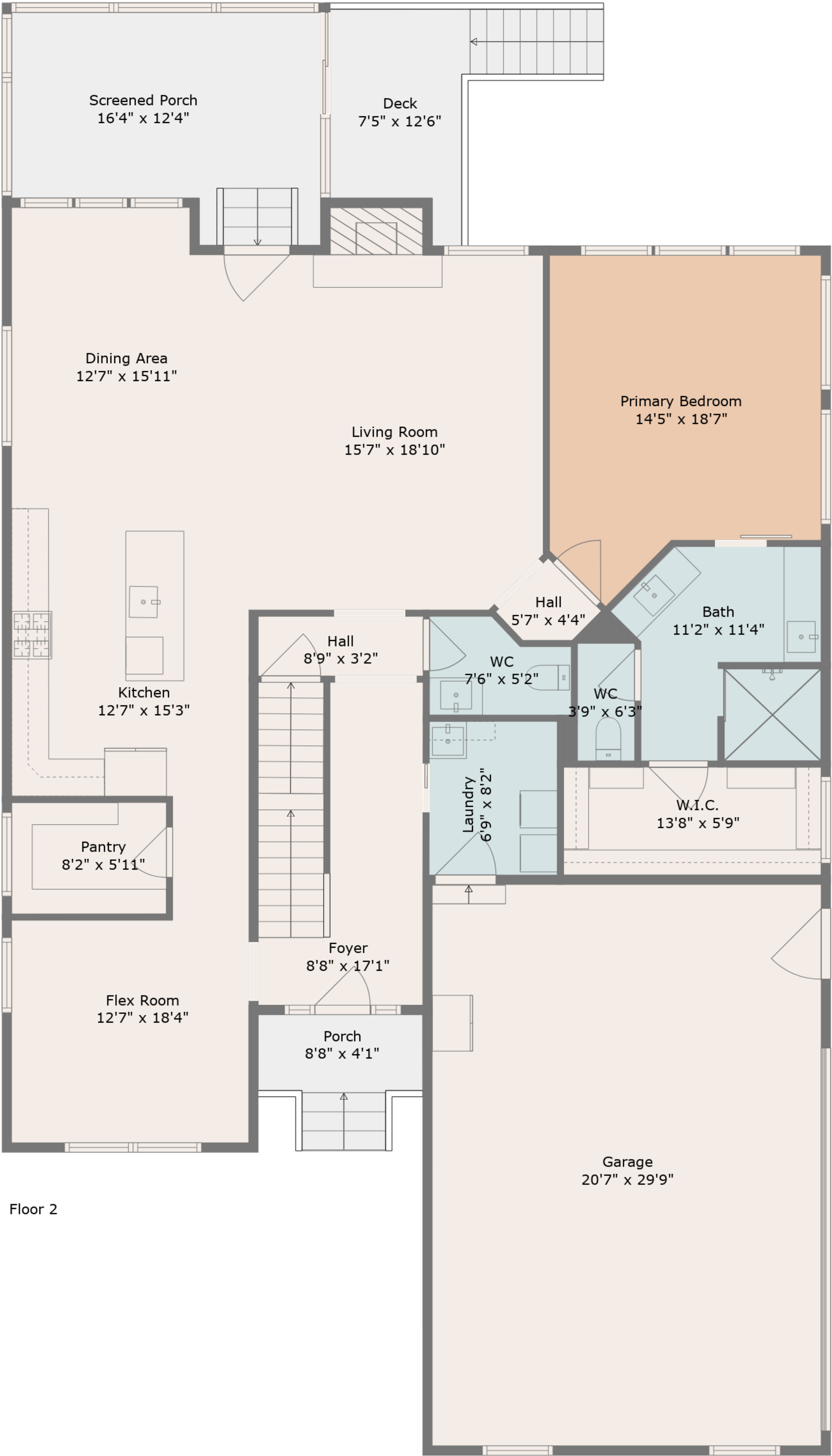


Total GLA: 2707 sq. ft | Total: 5479 sq. ft
Floor 1 - Below ground: (Excluded areas 1768 sq. ft)
Floor 2: 1771 sq. ft (Excluded areas 1004 sq. ft)
Floor 3: 936 sq. ft (Excluded areas 442 sq. ft)

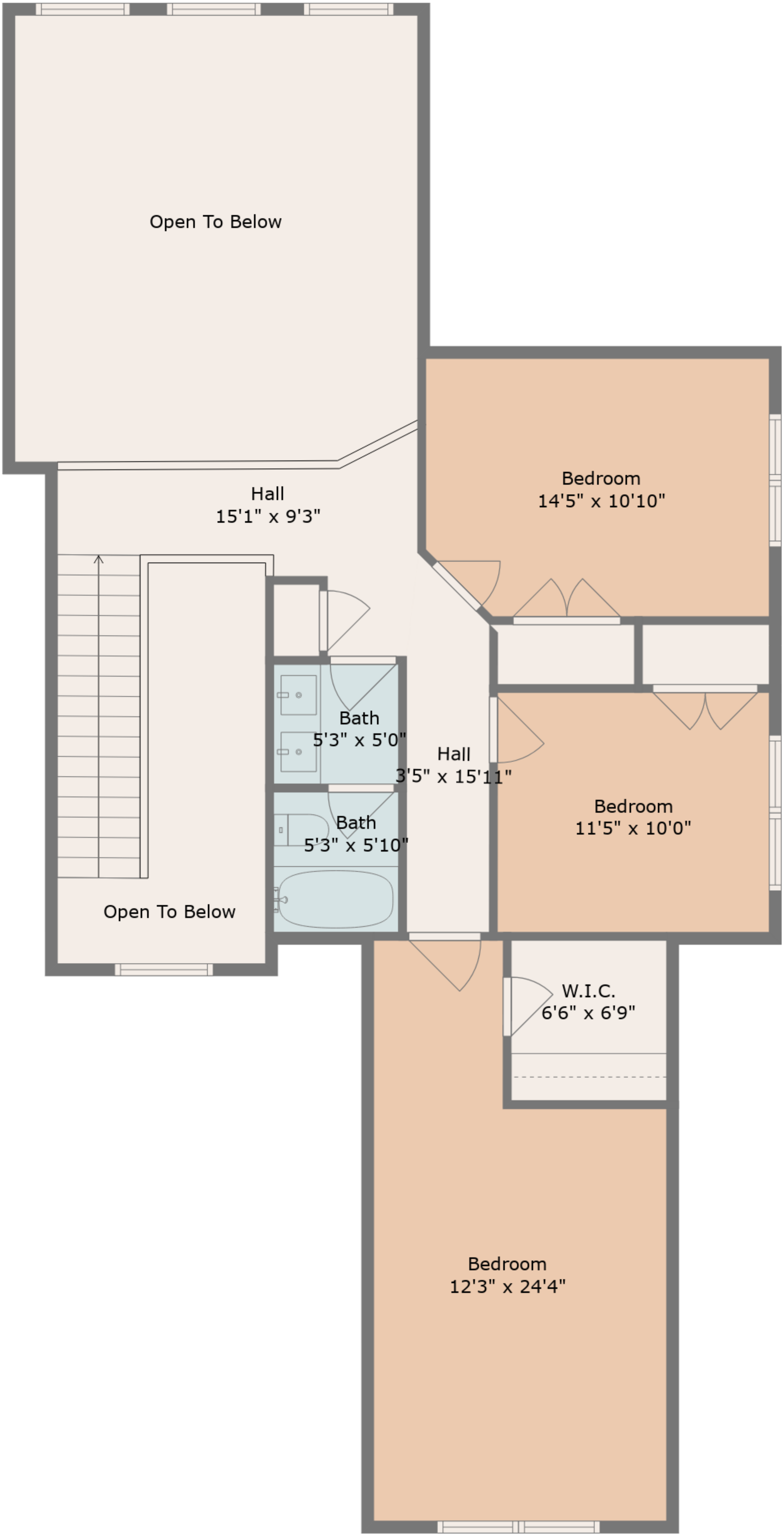
Room Sizes Not For Sqft Calculation. All Measurements Require Professional Verification.



Floor 1



Floor 2



Floor 3

Total GLA: 2707 sq. ft | Total: 5479 sq. ft
Floor 1 - Below ground: (Excluded areas 1768 sq. ft)
Floor 2: 1771 sq. ft (Excluded areas 1004 sq. ft)
Floor 3: 936 sq. ft (Excluded areas 442 sq. ft)

Room Sizes Not For Sqft Calculation. All Measurements Require Professional Verification.