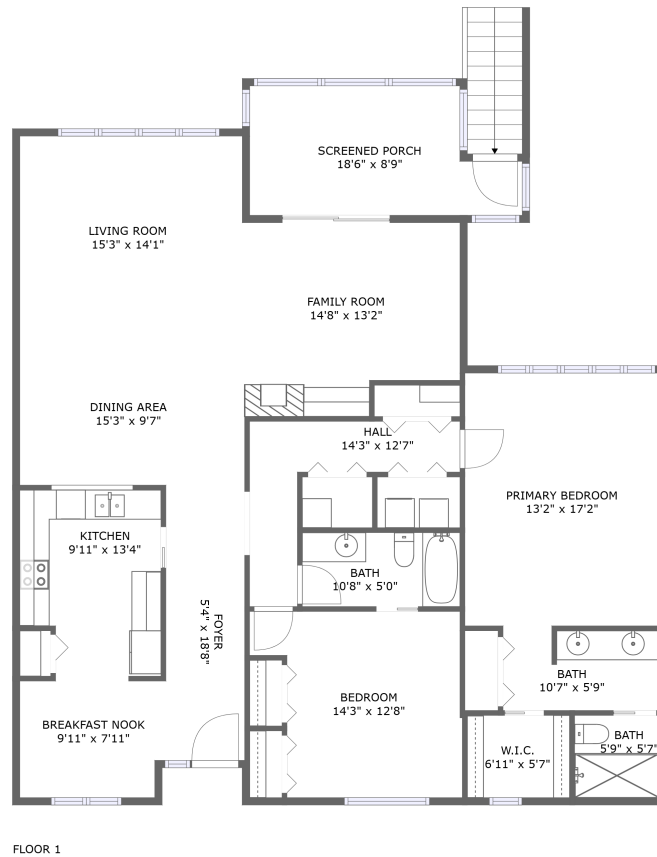



# 8003 Bardmoor Place, Fairway Villas at Bardmoor, Bardmoor, Seminole, Pinellas County, Florida, United



## Property summary

 **0** Garages

 **2** Bedrooms

 **2** Bathrooms

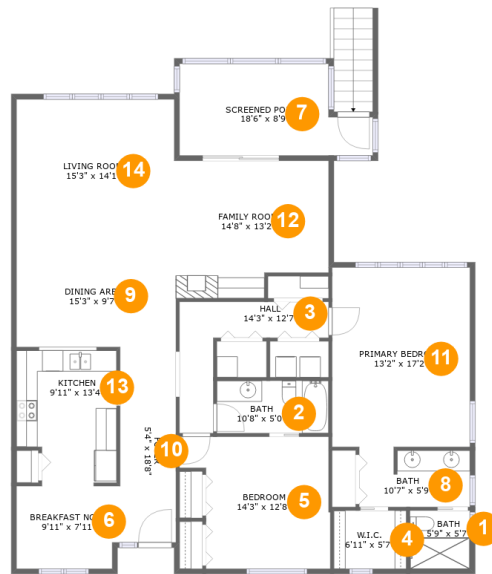
 **0** Half baths

 **1** Floors

 **1,628** Gross living area sqft

 **1,769** Total sqft

# 8003 Bardmoor Place, Fairway Villas at Bardmoor, Bardmoor, Seminole, Pinellas County, Florida, United



## Room dimensions

Floor 1

Total sqft: 1769 Living area: 1628

#		Dimensions	sqft	Counted as living area
1	Bath	5'9" x 5'7"	32 sq. ft	Yes
2	Bath	10'8" x 5'0"	54 sq. ft	Yes
3	Hall	14'3" x 12'7"	79 sq. ft	Yes
4	W.I.C.	6'11" x 5'7"	39 sq. ft	Yes
5	Bedroom	14'3" x 12'8"	157 sq. ft	Yes
6	Breakfast Nook	9'11" x 7'11"	76 sq. ft	Yes
7	Screened Porch	18'6" x 8'9"	141 sq. ft	No
8	Bath	10'7" x 5'9"	58 sq. ft	Yes
9	Dining Area	15'3" x 9'7"	147 sq. ft	Yes
10	Foyer	5'4" x 18'8"	100 sq. ft	Yes
11	Primary Bedroom	13'2" x 17'2"	226 sq. ft	Yes

Scan captured on Tue, 25 Feb 2025 22:20:26 GMT

Information is calculated by Cubicasa technology deemed highly reliable but not guaranteed.

**8003 Bardmoor Place, Fairway Villas at Bardmoor,  
Bardmoor, Seminole, Pinellas County, Florida, United**

#		Dimensions	sqft	Counted as living area
12	Family Room	14'8" x 13'2"	177 sq. ft	Yes
13	Kitchen	9'11" x 13'4"	122 sq. ft	Yes
14	Living Room	15'3" x 14'1"	213 sq. ft	Yes

# 8003 Bardmoor Place, Fairway Villas at Bardmoor, Bardmoor, Seminole, Pinellas County, Florida, United

## 1 Floor 1 - Bath



Dimensions: 5'9" x 5'7"  
Area: 32 sq. ft  
Counted as living area: Yes

Heated: Yes  
Finished: Yes  
Enclosed: Yes  
Contiguous: Yes  
Permitted: Yes  
Wet space: Yes  
Addition: No  
Conversion: No

## 2 Floor 1 - Bath



Dimensions: 10'8" x 5'0"  
Area: 54 sq. ft  
Counted as living area: Yes

Heated: Yes  
Finished: Yes  
Enclosed: Yes  
Contiguous: Yes  
Permitted: Yes  
Wet space: Yes  
Addition: No  
Conversion: No

# 8003 Bardmoor Place, Fairway Villas at Bardmoor, Bardmoor, Seminole, Pinellas County, Florida, United

## 3 Floor 1 - Hall



Dimensions: 14'3" x 12'7"  
Area: 79 sq. ft  
Counted as living area: Yes

Heated: Yes  
Finished: Yes  
Enclosed: Yes  
Contiguous: Yes  
Permitted: Yes  
Wet space: No  
Addition: No  
Conversion: No

## 4 Floor 1 - W.I.C.



Dimensions: 6'11" x 5'7"  
Area: 39 sq. ft  
Counted as living area: Yes

Heated: Yes  
Finished: Yes  
Enclosed: Yes  
Contiguous: Yes  
Permitted: Yes  
Wet space: No  
Addition: No  
Conversion: No

## 5 Floor 1 - Bedroom



Dimensions: 14'3" x 12'8"  
Area: 157 sq. ft  
Counted as living area: Yes

Heated: Yes  
Finished: Yes  
Enclosed: Yes  
Contiguous: Yes  
Permitted: Yes  
Wet space: No  
Addition: No  
Conversion: No

# 8003 Bardmoor Place, Fairway Villas at Bardmoor, Bardmoor, Seminole, Pinellas County, Florida, United

## 6 Floor 1 - Breakfast Nook



Dimensions: 9'11" x 7'11"  
Area: 76 sq. ft  
Counted as living area: Yes

Heated: Yes  
Finished: Yes  
Enclosed: Yes  
Contiguous: Yes  
Permitted: Yes  
Wet space: No  
Addition: No  
Conversion: No

## 7 Floor 1 - Screened Porch



Dimensions: 18'6" x 8'9"  
Area: 141 sq. ft  
Counted as living area: No

Heated: No  
Finished: Yes  
Enclosed: No  
Contiguous: Yes  
Permitted: Yes  
Wet space: No  
Addition: No  
Conversion: No

## 8 Floor 1 - Bath

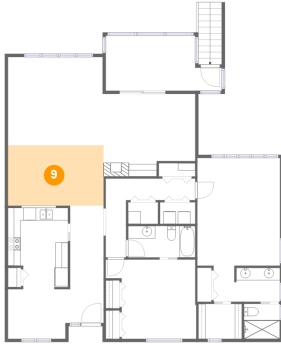


Dimensions: 10'7" x 5'9"  
Area: 58 sq. ft  
Counted as living area: Yes

Heated: Yes  
Finished: Yes  
Enclosed: Yes  
Contiguous: Yes  
Permitted: Yes  
Wet space: Yes  
Addition: No  
Conversion: No

# 8003 Bardmoor Place, Fairway Villas at Bardmoor, Bardmoor, Seminole, Pinellas County, Florida, United

## 9 Floor 1 - Dining Area



Dimensions: 15'3" x 9'7"  
Area: 147 sq. ft  
Counted as living area: Yes

Heated: Yes  
Finished: Yes  
Enclosed: Yes  
Contiguous: Yes  
Permitted: Yes  
Wet space: No  
Addition: No  
Conversion: No

## 10 Floor 1 - Foyer



Dimensions: 5'4" x 18'8"  
Area: 100 sq. ft  
Counted as living area: Yes

Heated: Yes  
Finished: Yes  
Enclosed: Yes  
Contiguous: Yes  
Permitted: Yes  
Wet space: No  
Addition: No  
Conversion: No

## 11 Floor 1 - Primary Bedroom



Dimensions: 13'2" x 17'2"  
Area: 226 sq. ft  
Counted as living area: Yes

Heated: Yes  
Finished: Yes  
Enclosed: Yes  
Contiguous: Yes  
Permitted: Yes  
Wet space: No  
Addition: No  
Conversion: No

# 8003 Bardmoor Place, Fairway Villas at Bardmoor, Bardmoor, Seminole, Pinellas County, Florida, United

## 12 Floor 1 - Family Room



Dimensions: 14'8" x 13'2"  
Area: 177 sq. ft  
Counted as living area: Yes

Heated: Yes  
Finished: Yes  
Enclosed: Yes  
Contiguous: Yes  
Permitted: Yes  
Wet space: No  
Addition: No  
Conversion: No

## 13 Floor 1 - Kitchen



Dimensions: 9'11" x 13'4"  
Area: 122 sq. ft  
Counted as living area: Yes

Heated: Yes  
Finished: Yes  
Enclosed: Yes  
Contiguous: Yes  
Permitted: Yes  
Wet space: No  
Addition: No  
Conversion: No

## 14 Floor 1 - Living Room



Dimensions: 15'3" x 14'1"  
Area: 213 sq. ft  
Counted as living area: Yes

Heated: Yes  
Finished: Yes  
Enclosed: Yes  
Contiguous: Yes  
Permitted: Yes  
Wet space: No  
Addition: No  
Conversion: No