

304 Magnolia Drive, Harbor Oaks, Clearwater, Pinellas County, Florida, United States, 33756

Gross Living Area: 4450 sq. ft

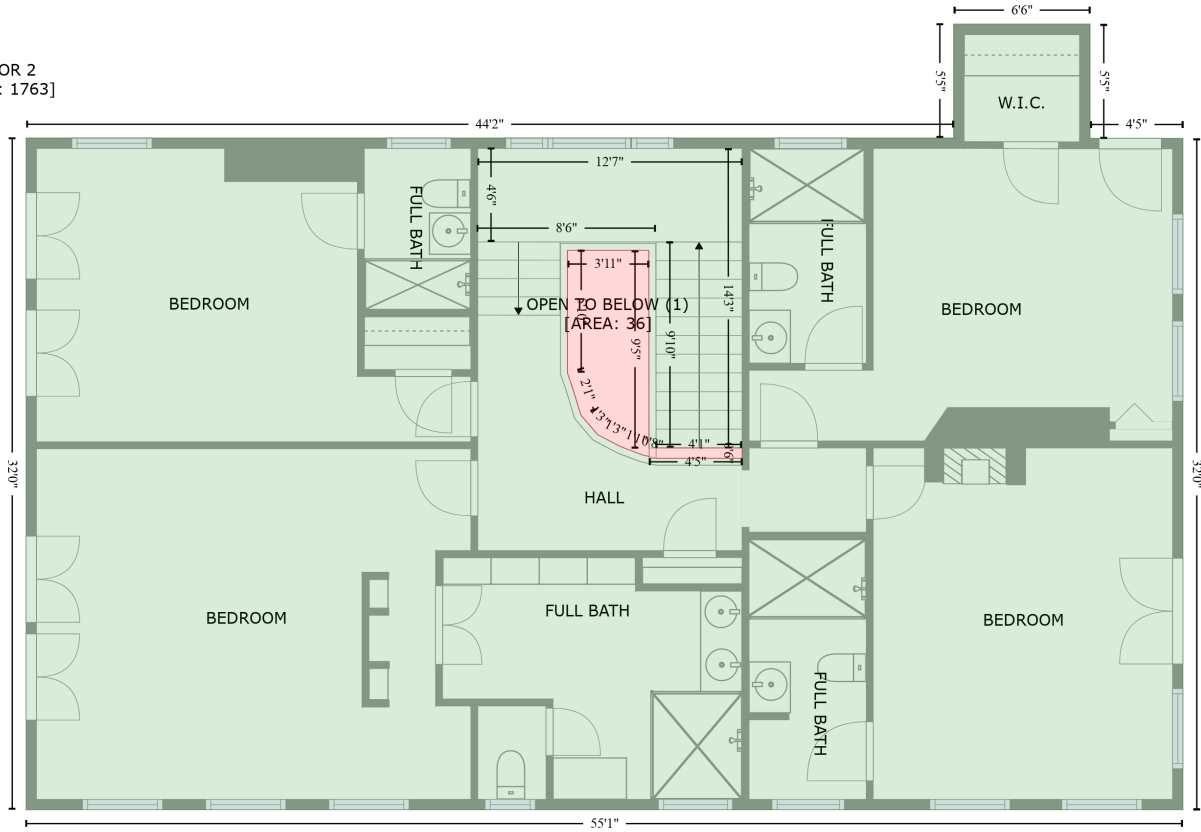


Space	Area (sq. ft)	Calculation
FLOOR 1 (Living area)	2687	Coordinate Polygon Area Algorithm using inches $-((338.3 + 338.3) * (-2.9 - 74.3) + (338.3 + 309.1) * (74.3 - 74.3) + (309.1 + 309.1) * (74.3 - 151.2) + (309.1 + 338.3) * (151.2 - 151.2) + (338.3 + 338.3) * (151.2 - 237.7) + (338.3 + 692.8) * (237.7 - 237.7) + (692.8 + 692.8) * (237.7 - 60.5) + (692.8 + 824) * (60.5 - 60.5) + (824 + 824) * (60.5 - 377.5) + (824 + 1021.7) * (377.5 - 377.5) + (1021.7 + 1021.7) * (377.5 - 559.1) + (1021.7 + 827.2) * (559.1 - 559.1) + (827.2 + 827.2) * (559.1 - 553.1) + (827.2 + 827.2) * (553.1 - 552) + (827.2 + 827.2) * (552 - 559.1) + (827.2 + 824.3) * (559.1 - 559.1) + (824.3 + 824.3) * (559.1 - 621.7) + (824.3 + 570) * (621.7 - 621.7) + (570 + 570) * (621.7 - 593.4) + (570 + 422.5) * (593.4 - 593.4) + (422.5 + 422.5) * (593.4 - 621.7) + (422.5 + 162.5) * (621.7 - 621.7) + (162.5 + 162.5) * (621.7 - 240.7) + (162.5 + 7) * (240.7 - 240.7) + (7 + 7) * (240.7 - -2.9) + (7 + 338.3) * (-2.9 - -2.9) * 0.5 * 0.00694$

304 Magnolia Drive, Harbor Oaks, Clearwater, Pinellas County, Florida, United States, 33756

Gross Living Area: 4450 sq. ft

FLOOR 2
[AREA: 1763]



Space	Area (sq. ft)	Calculation
FLOOR 2 (Living area)	1763	Coordinate Polygon Area Algorithm using inches $-((770.8 + 770.8) * (172.5 - 237.9) + (770.8 + 824) * (237.9 - 237.9) + (824 + 824) * (237.9 - 621.7) + (824 + 162.5) * (621.7 - 621.7) + (162.5 + 162.5) * (621.7 - 237.7) + (162.5 + 692.8) * (237.7 - 237.7) + (692.8 + 692.8) * (237.7 - 172.5) + (692.8 + 770.8) * (172.5 - 172.5)) * 0.5 * 0.00694 - ((518.5 + 472) * (301.9 - 301.9) + (472 + 472) * (301.9 - 371.9) + (472 + 479.7) * (371.9 - 396.1) + (479.7 + 489.2) * (396.1 - 407.2) + (489.2 + 502.2) * (407.2 - 414) + (502.2 + 514.8) * (414 - 418.8) + (514.8 + 522.7) * (418.8 - 420.7) + (522.7 + 571.9) * (420.7 - 420.7) + (571.9 + 571.9) * (420.7 - 414.9) + (571.9 + 518.5) * (414.9 - 414.9) + (518.5 + 518.5) * (414.9 - 301.9)) * 0.5 * 0.00694$
OPEN TO BELOW (Non-living area)	36	$-((518.5 + 518.5) * (301.9 - 414.9) + (518.5 + 571.9) * (414.9 - 414.9) + (571.9 + 571.9) * (414.9 - 420.7) + (571.9 + 522.7) * (420.7 - 420.7) + (522.7 + 514.8) * (420.7 - 418.8) + (514.8 + 502.2) * (418.8 - 414) + (502.2 + 489.2) * (414 - 407.2) + (489.2 + 479.7) * (407.2 - 396.1) + (479.7 + 472) * (396.1 - 371.9) + (472 + 472) * (371.9 - 301.9) + (472 + 518.5) * (301.9 - 301.9)) * 0.5 * 0.00694$