

Home Data Report

**650 East Spruce Street, Titusville, Crawford County, Pennsylvania, United States, 16354**



**Property Summary**

 **1** garages     **3** bedrooms     **2** bathrooms     **0** half baths

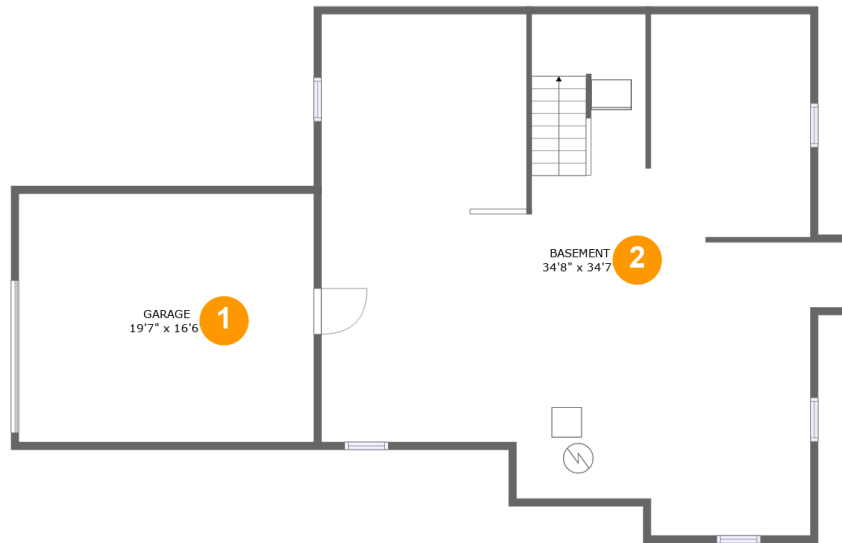
 **3** floors

 **1,783** Gross Living Area sqft

 **4,470** total sqft

## Home Data Report

**650 East Spruce Street, Titusville, Crawford County, Pennsylvania, United States, 16354**



## Room Dimensions

Floor 1

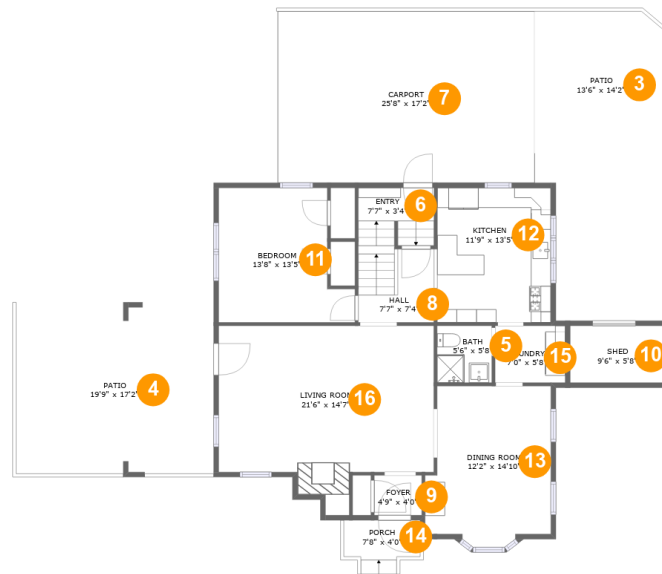
Total sqft: 1454

Living area: 0

#	Room name	Dimensions	Area (sqft)	Counted as Living Area
1	Garage	19'7" x 16'6"	323 sq. ft	No
2	Basement	34'8" x 34'7"	1021 sq. ft	No

## Home Data Report

# 650 East Spruce Street, Titusville, Crawford County, Pennsylvania, United States, 16354



## Room Dimensions

Floor 2

Total sqft: 2220

Living area: 1112

#	Room name	Dimensions	Area (sqft)	Counted as Living Area
3	Patio	13'6" x 14'2"	188 sq. ft	No
4	Patio	19'9" x 17'2"	339 sq. ft	No
5	Bath	5'6" x 5'8"	31 sq. ft	Yes
6	Entry	7'7" x 3'4"	34 sq. ft	No
7	Carport	25'8" x 17'2"	440 sq. ft	No
8	Hall	7'7" x 7'4"	66 sq. ft	Yes
9	Foyer	4'9" x 4'0"	19 sq. ft	Yes
10	Shed	9'6" x 5'8"	54 sq. ft	No
11	Bedroom	13'8" x 13'5"	155 sq. ft	Yes
12	Kitchen	11'9" x 13'5"	155 sq. ft	Yes
13	Dining Room	12'2" x 14'10"	175 sq. ft	Yes

Scan captured on Fri, 28 Jun 2024 15:02:38 GMT

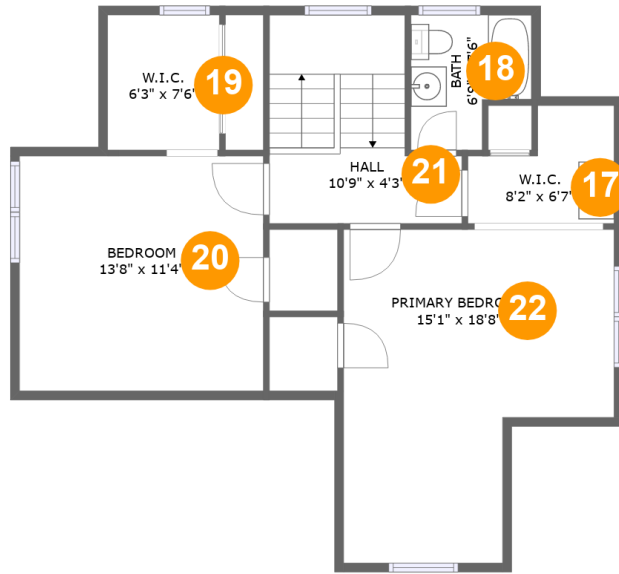
Information is calculated by CubiCasa technology; deemed highly reliable but not guaranteed.

Home Data Report

**650 East Spruce Street, Titusville, Crawford  
County, Pennsylvania, United States, 16354**

#	Room name	Dimensions	Area (sqft)	Counted as Living Area
14	Porch	7'8" x 4'0"	29 sq. ft	No
15	Laundry	7'0" x 5'8"	40 sq. ft	Yes
16	Living Room	21'6" x 14'7"	331 sq. ft	Yes

**650 East Spruce Street, Titusville, Crawford County, Pennsylvania, United States, 16354**



**Room Dimensions**

**Floor 3**

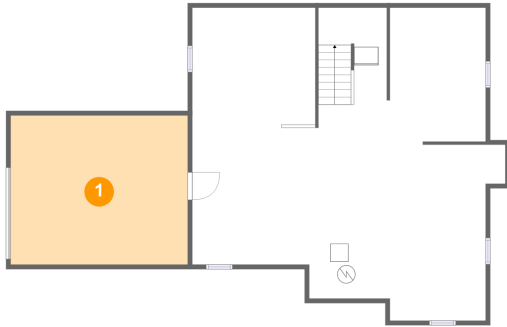
**Total sqft: 796**

**Living area: 671**

#	Room name	Dimensions	Area (sqft)	Counted as Living Area
17	W.i.c.	8'2" x 6'7"	31 sq. ft	Yes
18	Bath	6'9" x 7'6"	43 sq. ft	Yes
19	W.i.c.	6'3" x 7'6"	47 sq. ft	Yes
20	Bedroom	13'8" x 11'4"	155 sq. ft	Yes
21	Hall	10'9" x 4'3"	100 sq. ft	Yes
22	Primary Bedroom	15'1" x 18'8"	170 sq. ft	Yes

**650 East Spruce Street, Titusville, Crawford County, Pennsylvania, United States, 16354**

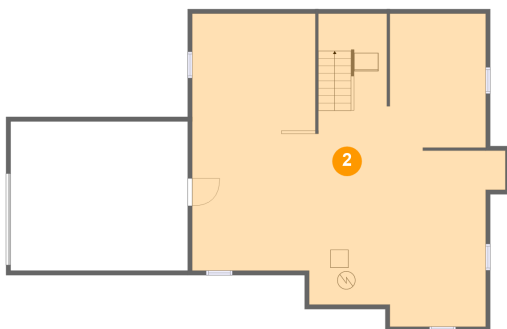
**1 Floor 1 - Garage**



Dimensions: 19'7" x 16'6"  
Area: 323 sq. ft  
Counted as Living Area: No

Heated: No  
Finished: No  
Enclosed: Yes  
Contiguous: Yes  
Permitted: Yes  
Wet Space: No  
Addition: No  
Conversion: No

**2 Floor 1 - Basement**

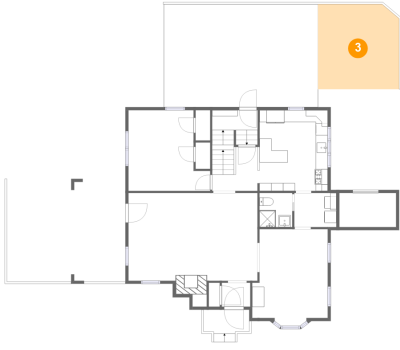


Dimensions: 34'8" x 34'7"  
Area: 1021 sq. ft  
Counted as Living Area: No

Heated: No  
Finished: No  
Enclosed: Yes  
Contiguous: Yes  
Permitted: Yes  
Wet Space: No  
Addition: No  
Conversion: No

**650 East Spruce Street, Titusville, Crawford County, Pennsylvania, United States, 16354**

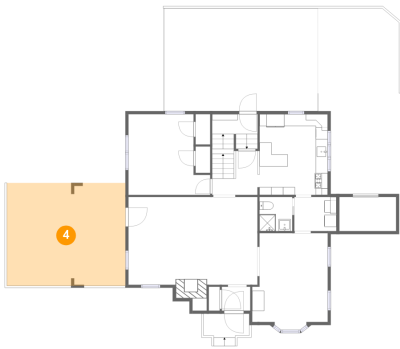
**3 Floor 2 - Patio**



Dimensions: 13'6" x 14'2"  
Area: 188 sq. ft  
Counted as Living Area: No

Heated: No  
Finished: Yes  
Enclosed: No  
Contiguous: Yes  
Permitted: Yes  
Wet Space: No  
Addition: No  
Conversion: No

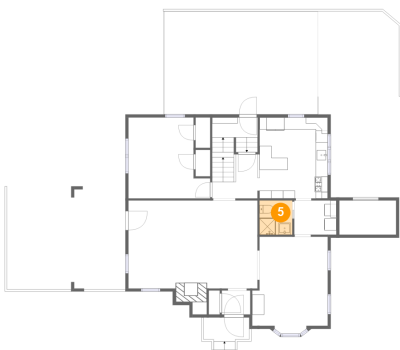
**4 Floor 2 - Patio**



Dimensions: 19'9" x 17'2"  
Area: 339 sq. ft  
Counted as Living Area: No

Heated: No  
Finished: Yes  
Enclosed: No  
Contiguous: Yes  
Permitted: Yes  
Wet Space: No  
Addition: No  
Conversion: No

**5 Floor 2 - Bath**



Dimensions: 5'6" x 5'8"  
Area: 31 sq. ft  
Counted as Living Area: Yes

Heated: Yes  
Finished: Yes  
Enclosed: Yes  
Contiguous: Yes  
Permitted: Yes  
Wet Space: Yes  
Addition: No  
Conversion: No

**650 East Spruce Street, Titusville, Crawford County, Pennsylvania, United States, 16354**

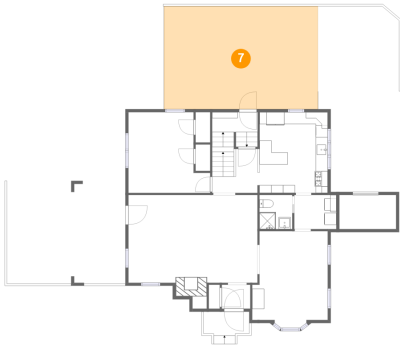
**6 Floor 2 - Entry**



Dimensions: 7'7" x 3'4"  
Area: 34 sq. ft  
Counted as Living Area: No

Heated: Yes  
Finished: Yes  
Enclosed: Yes  
Contiguous: Yes  
Permitted: Yes  
Wet Space: No  
Addition: No  
Conversion: No

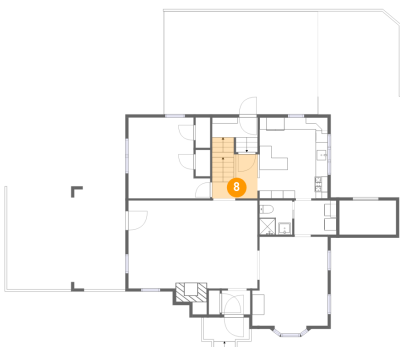
**7 Floor 2 - Carport**



Dimensions: 25'8" x 17'2"  
Area: 440 sq. ft  
Counted as Living Area: No

Heated: No  
Finished: Yes  
Enclosed: No  
Contiguous: Yes  
Permitted: Yes  
Wet Space: No  
Addition: No  
Conversion: No

**8 Floor 2 - Hall**



Dimensions: 7'7" x 7'4"  
Area: 66 sq. ft  
Counted as Living Area: Yes

Heated: Yes  
Finished: Yes  
Enclosed: Yes  
Contiguous: Yes  
Permitted: Yes  
Wet Space: No  
Addition: No  
Conversion: No



**650 East Spruce Street, Titusville, Crawford County, Pennsylvania, United States, 16354**

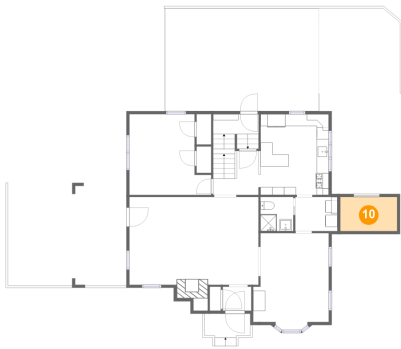
**9 Floor 2 - Foyer**



Dimensions: 4'9" x 4'0"  
Area: 19 sq. ft  
Counted as Living Area:  
Yes

Heated: Yes  
Finished: Yes  
Enclosed: Yes  
Contiguous:  
Yes  
Permitted: Yes  
Wet Space: No  
Addition: No  
Conversion: No

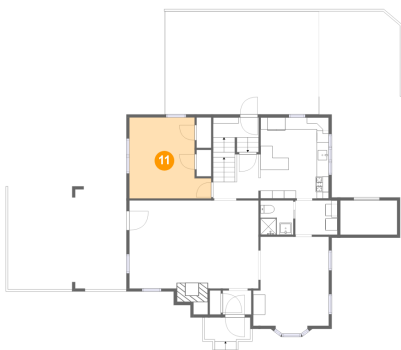
**10 Floor 2 - Shed**



Dimensions: 9'6" x 5'8"  
Area: 54 sq. ft  
Counted as Living Area: No

Heated: No  
Finished: No  
Enclosed: No  
Contiguous: No  
Permitted: Yes  
Wet Space: No  
Addition: No  
Conversion: No

**11 Floor 2 - Bedroom**

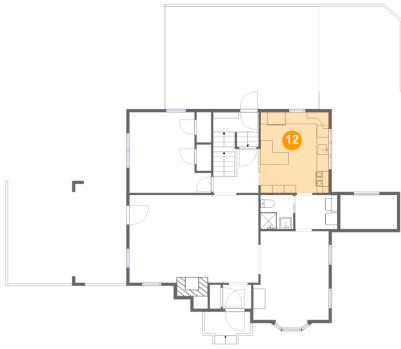


Dimensions: 13'8" x 13'5"  
Area: 155 sq. ft  
Counted as Living Area:  
Yes

Heated: Yes  
Finished: Yes  
Enclosed: Yes  
Contiguous:  
Yes  
Permitted: Yes  
Wet Space: No  
Addition: No  
Conversion: No

**650 East Spruce Street, Titusville, Crawford County, Pennsylvania, United States, 16354**

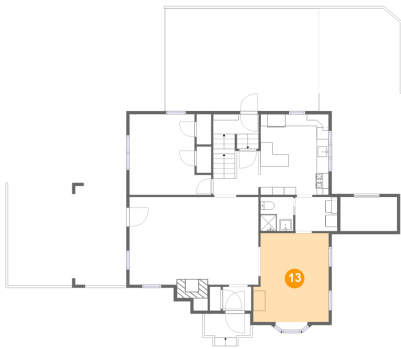
**12 Floor 2 - Kitchen**



Dimensions: 11'9" x 13'5"  
Area: 155 sq. ft  
Counted as Living Area:  
Yes

Heated: Yes  
Finished: Yes  
Enclosed: Yes  
Contiguous:  
Yes  
Permitted: Yes  
Wet Space: No  
Addition: No  
Conversion: No

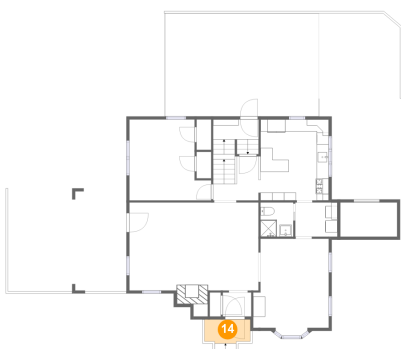
**13 Floor 2 - Dining Room**



Dimensions: 12'2" x 14'10"  
Area: 175 sq. ft  
Counted as Living Area:  
Yes

Heated: Yes  
Finished: Yes  
Enclosed: Yes  
Contiguous:  
Yes  
Permitted: Yes  
Wet Space: No  
Addition: No  
Conversion: No

**14 Floor 2 - Porch**

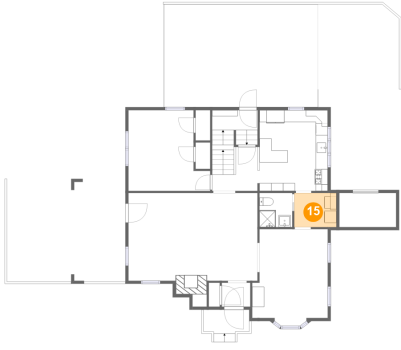


Dimensions: 7'8" x 4'0"  
Area: 29 sq. ft  
Counted as Living Area: No

Heated: No  
Finished: Yes  
Enclosed: No  
Contiguous: Yes  
Permitted: Yes  
Wet Space: No  
Addition: No  
Conversion: No

**650 East Spruce Street, Titusville, Crawford County, Pennsylvania, United States, 16354**

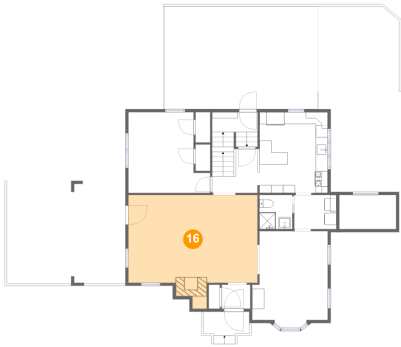
**15 Floor 2 - Laundry**



Dimensions: 7'0" x 5'8"  
Area: 40 sq. ft  
Counted as Living Area:  
Yes

Heated: Yes  
Finished: Yes  
Enclosed: Yes  
Contiguous:  
Yes  
Permitted: Yes  
Wet Space: No  
Addition: No  
Conversion: No

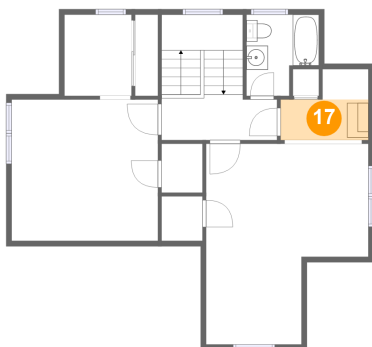
**16 Floor 2 - Living Room**



Dimensions: 21'6" x 14'7"  
Area: 331 sq. ft  
Counted as Living Area:  
Yes

Heated: Yes  
Finished: Yes  
Enclosed: Yes  
Contiguous:  
Yes  
Permitted: Yes  
Wet Space: No  
Addition: No  
Conversion: No

**17 Floor 3 - W.i.c.**

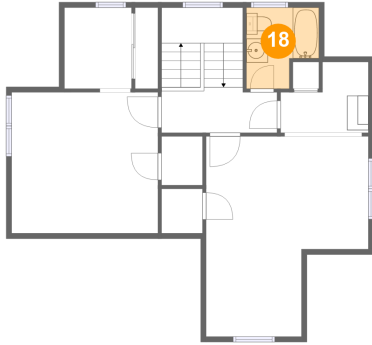


Dimensions: 8'2" x 6'7"  
Area: 31 sq. ft  
Counted as Living Area:  
Yes

Heated: Yes  
Finished: Yes  
Enclosed: Yes  
Contiguous:  
Yes  
Permitted: Yes  
Wet Space: No  
Addition: No  
Conversion: No

**650 East Spruce Street, Titusville, Crawford County, Pennsylvania, United States, 16354**

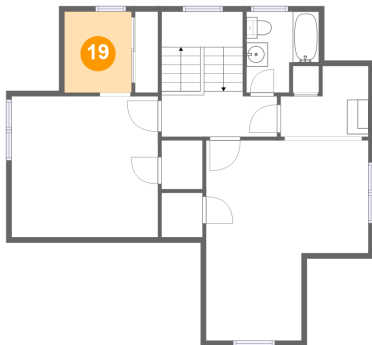
**18 Floor 3 - Bath**



Dimensions: 6'9" x 7'6"  
Area: 43 sq. ft  
Counted as Living Area:  
Yes

Heated: Yes  
Finished: Yes  
Enclosed: Yes  
Contiguous:  
Yes  
Permitted: Yes  
Wet Space: Yes  
Addition: No  
Conversion: No

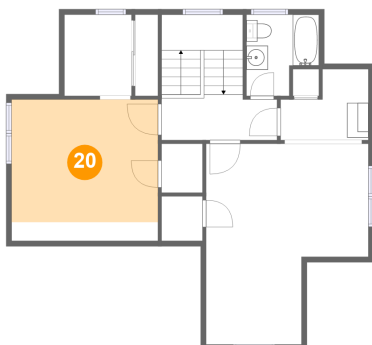
**19 Floor 3 - W.i.c.**



Dimensions: 6'3" x 7'6"  
Area: 47 sq. ft  
Counted as Living Area:  
Yes

Heated: Yes  
Finished: Yes  
Enclosed: Yes  
Contiguous:  
Yes  
Permitted: Yes  
Wet Space: No  
Addition: No  
Conversion: No

**20 Floor 3 - Bedroom**

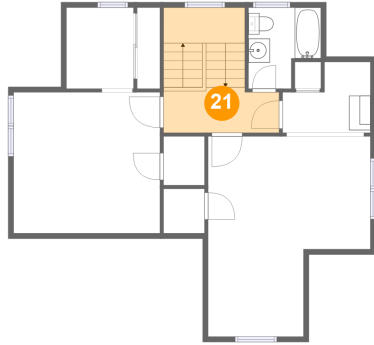


Dimensions: 13'8" x 11'4"  
Area: 155 sq. ft  
Counted as Living Area:  
Yes

Heated: Yes  
Finished: Yes  
Enclosed: Yes  
Contiguous:  
Yes  
Permitted: Yes  
Wet Space: No  
Addition: No  
Conversion: No

**650 East Spruce Street, Titusville, Crawford County, Pennsylvania, United States, 16354**

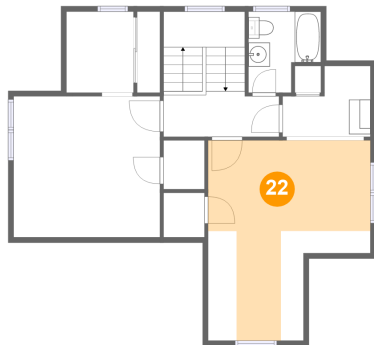
**21 Floor 3 - Hall**



Dimensions: 10'9" x 4'3"  
Area: 100 sq. ft  
Counted as Living Area:  
Yes

Heated: Yes  
Finished: Yes  
Enclosed: Yes  
Contiguous:  
Yes  
Permitted: Yes  
Wet Space: No  
Addition: No  
Conversion: No

**22 Floor 3 - Primary Bedroom**



Dimensions: 15'1" x 18'8"  
Area: 170 sq. ft  
Counted as Living Area:  
Yes

Heated: Yes  
Finished: Yes  
Enclosed: Yes  
Contiguous:  
Yes  
Permitted: Yes  
Wet Space: No  
Addition: No  
Conversion: No